

Brilliant BHA120US-WH4

Brilliant Smart Home Control (2-Switch Panel) Instruction Manual

Brand: Brilliant | Model: BHA120US-WH4

INTRODUCTION

The Brilliant Smart Home Control (2-Switch Panel) is an in-wall touchscreen and smart switch designed to centralize control of your smart home devices. It integrates seamlessly with various platforms and devices, offering a convenient and intuitive way to manage your home's environment.

SETUP

The Brilliant 2-Switch Panel is designed to replace existing 2-gang light switches. Installation requires neutral and ground wires in a 2-gang electrical box. The Brilliant app provides step-by-step guidance for a smooth setup process.

Swap out 2 light switches for a Brilliant 2-Switch Panel

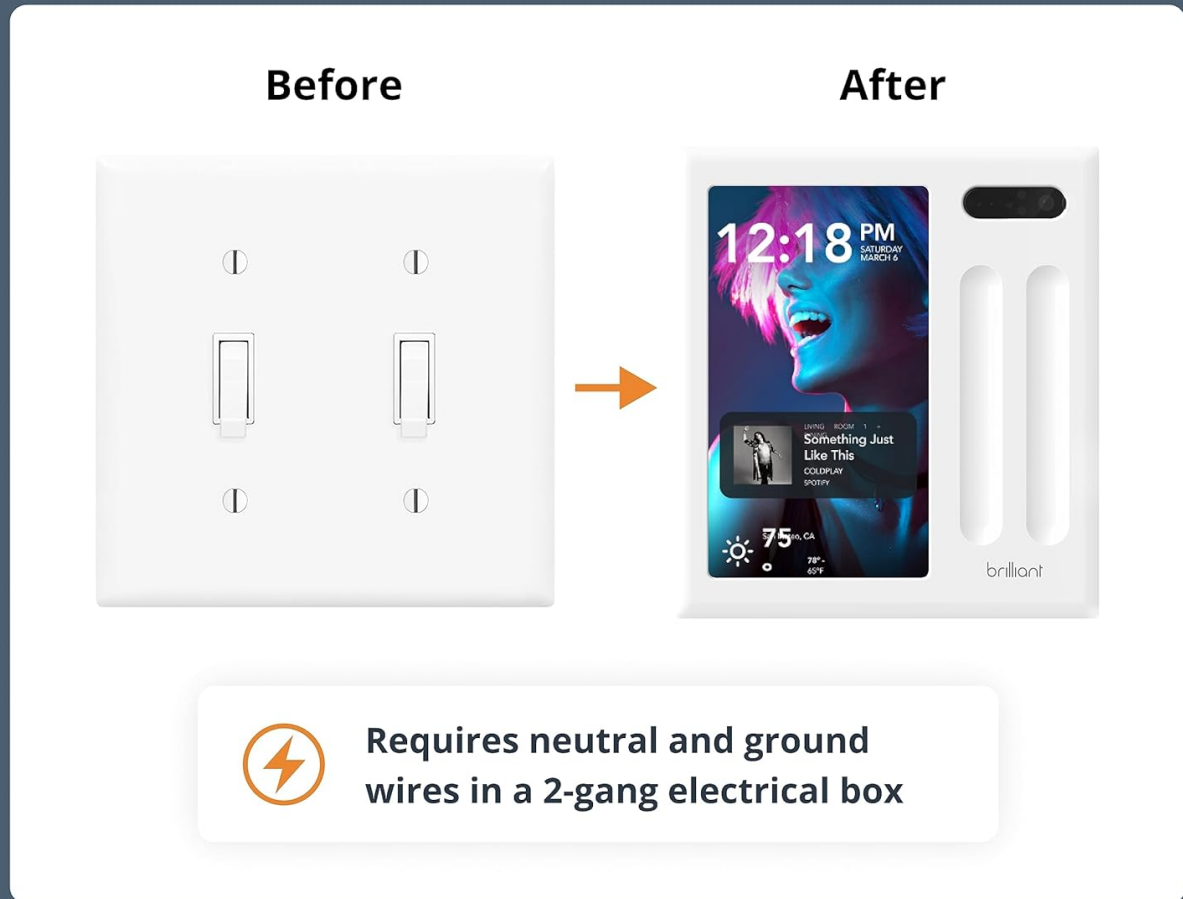


Image: The Brilliant 2-Switch Panel is designed to replace two standard light switches, requiring neutral and ground wires.

The device features built-in Alexa for voice control and is compatible with a wide range of smart home ecosystems, including Ring, Sonos, Hue, Google Nest, Wemo, SmartThings, and Apple HomeKit.

Video: An overview of how the Brilliant Smart Home Control can transform any home into a smart home.

OPERATING INSTRUCTIONS

The Brilliant Smart Home Control offers intuitive touchscreen and voice-activated control over various aspects of your home. The main screen provides quick access to lighting, music, climate, security, and access controls.

Makes it easy for everyone to control your smart home

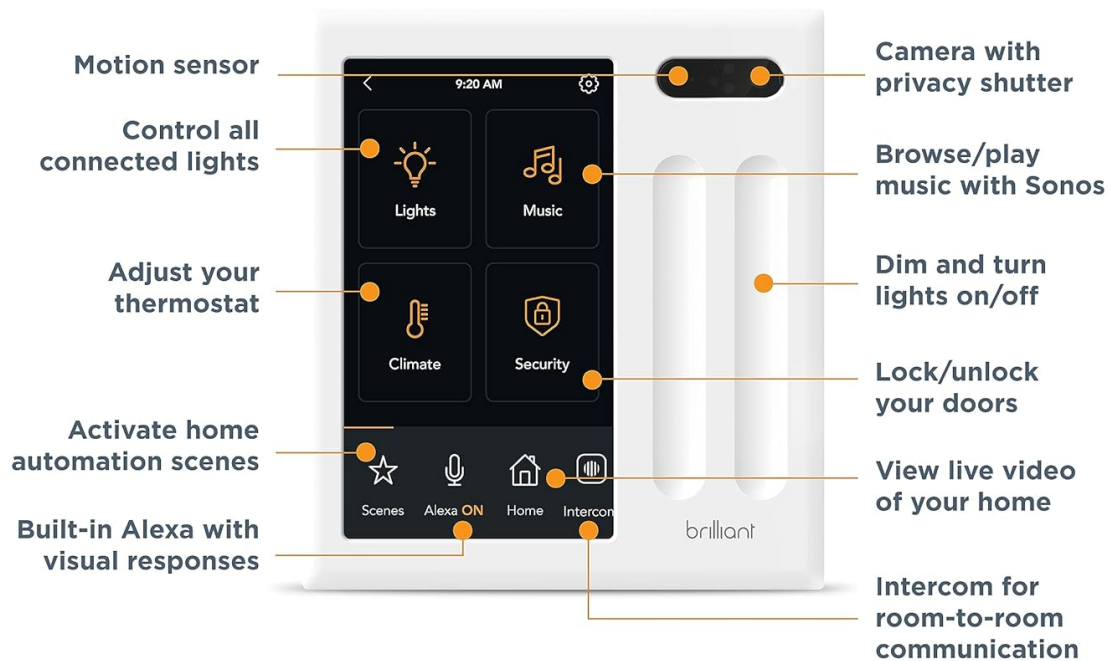


Image: The Brilliant Control Panel highlights its various functions, including motion sensor, light control, thermostat adjustment, home automation scenes, built-in Alexa, camera with privacy shutter, music browsing, door lock/unlock, live video view, and intercom.

Lighting Control: Easily dim and turn lights on/off using the touchscreen sliders or voice commands. You can also create lighting scenes and schedules, and automate lights with motion detection.



**Spring Blow
Out SALE**

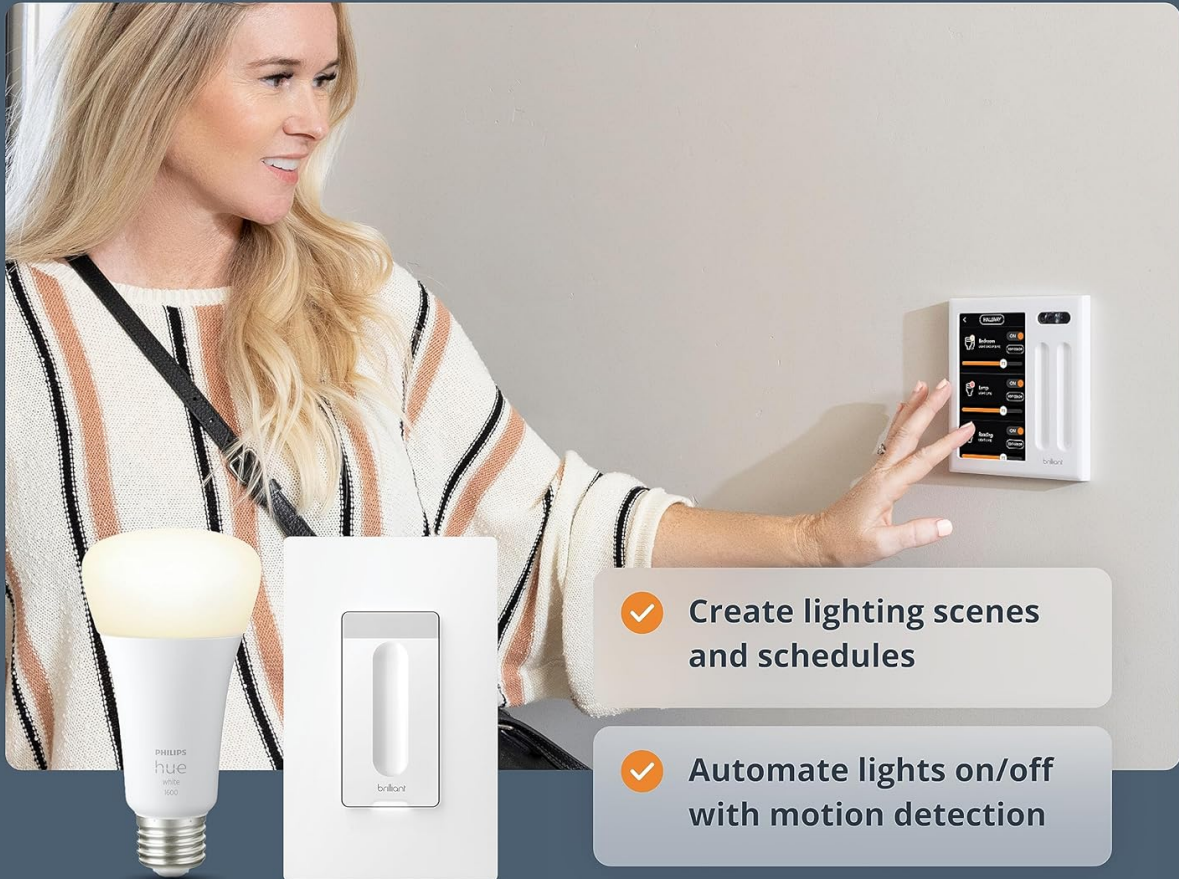
On All New Brilliant Controls

**SAVE UP TO
\$150**

Image: The control panel integrates with popular smart home devices, allowing easy management of lighting, security, music, access, Alexa, and climate.

Music Control: Browse playlists, artists, albums, and radio stations, and select which rooms and speakers play music directly from your wall panel. Compatible with Sonos.

Add convenience, ambiance, security with smart lighting



✓ Create lighting scenes and schedules

✓ Automate lights on/off with motion detection

Image: Control your Sonos music experience directly from the wall panel, including browsing and selecting playback rooms.

Climate Control: Adjust your thermostat settings directly from the panel.

Access & Security: Answer the door without your phone, view security cameras, and control smart locks. The panel includes a camera with a privacy shutter for added security.

See who's at the door and let them in with a tap



Image: The Brilliant Control Panel allows users to see who's at the door and let them in with a tap, integrating with Ring doorbells and Yale smart locks.

Intercom: Utilize the intercom feature for room-to-room communication within your home.

Video: A brief demonstration of the 2-Switch Control Panel's functionality, including light and fan control.

MAINTENANCE

Keep the touchscreen clean by gently wiping it with a soft, dry cloth. Avoid abrasive cleaners or solvents. Ensure the device's software is up-to-date by checking for updates through the Brilliant app or on the device settings.

TROUBLESHOOTING

- **Dimmer Flicker:** If lights connected to the dimmer flicker, especially at lower voltages, ensure compatible dimmable bulbs are used. Consult the Brilliant app for calibration options. If issues persist, professional electrical inspection may be required.
- **Connectivity Issues:** Ensure your Wi-Fi network is stable and the Brilliant device is within range. Restarting your router or the Brilliant control panel may resolve temporary connectivity problems.

- **Device Not Responding:** Check the circuit breaker to ensure power is supplied to the switch. If the device is unresponsive, a factory reset may be necessary (refer to the app for instructions, as this will erase settings).

SPECIFICATIONS

Feature	Detail
Operation Mode	Manual
Operating Voltage	120 Volts
Contact Type	Normally Open
Connector Type	Screw Terminals
Circuit Type	1-way
Actuator Type	Touch
International Protection Rating	IP65
Number of Positions	2
Control Method	Voice
Connectivity Protocol	Wi-Fi
Wattage	1100 watts
Item Weight	1.34 pounds

WARRANTY & SUPPORT

Brilliant offers optional protection plans for your device, including 3-Year and 4-Year Protection Plans, and a Complete Protect monthly plan. For detailed warranty information and technical support, please visit the official Brilliant Home Technology website or contact their customer service directly.