

Marvel WN201193

Marvel Spiderman Volcano Lamp User Manual

Model:WN201193|Brand:Marvel

INTRODUCTION

This manual provides essential information for the safe and effective use of your Marvel Spiderman Volcano Lamp. Designed to add a vibrant and relaxing ambiance, this lamp features a colorful Spiderman design and a soothing volcano effect. It functions as both a decorative item and a night light, providing soft, illuminating light.

WHAT'S IN THE BOX

Please ensure all components are present before proceeding with setup.

- Marvel Spiderman Volcano Lamp Unit

SETUP

Follow these steps to set up your Spiderman Volcano Lamp:

1. **Unpack the Lamp:** Carefully remove the lamp from its packaging. Inspect for any damage.



Image: The Marvel Spiderman Volcano Lamp unit, showing its full design and structure.

2. **Choose a Location:** Place the lamp on a stable, flat, and dry surface, such as a tabletop. Ensure it is away from direct sunlight, extreme temperatures, and out of reach of small children and pets.
3. **Connect Power:** Locate the USB power cable. Insert the small end into the lamp's power port and the larger end into a compatible AC power adapter (not included) or a USB port.

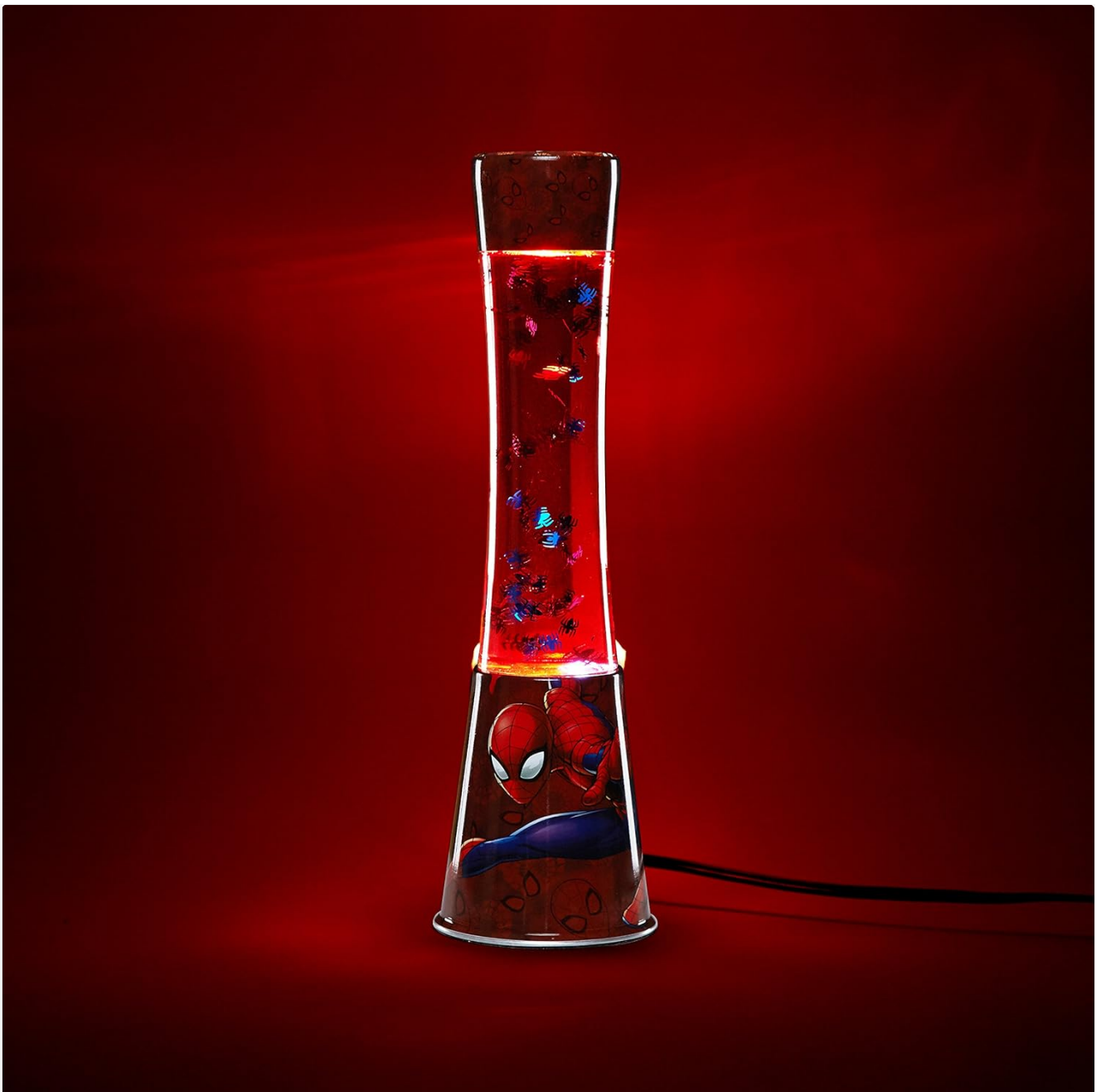


Image: The Marvel Spiderman Volcano Lamp from a side angle, illustrating the power cable connection point.

4. **Plug In:** Plug the AC power adapter into a standard wall outlet.

OPERATING INSTRUCTIONS

The Marvel Spiderman Volcano Lamp is designed for simple operation.

1. **Power On/Off:** Locate the on/off switch, typically found on the base or power cord of the lamp. Flip the switch to the "ON" position to activate the lamp. Flip it to the "OFF" position to turn it off.
2. **Initial Warm-up:** Upon first use or after being off for an extended period, the lamp may require some time (up to an hour) for the internal liquid and "volcano" effect to fully activate and flow smoothly. This is normal.

MAINTENANCE AND CARE

Proper care will ensure the longevity and performance of your lamp.

- **Cleaning:** Disconnect the lamp from the power source before cleaning. Wipe the exterior of the lamp with a

soft,dry,or slightly damp cloth.Do not use abrasive cleaners,solvents,or excessive water,as this may damage the finish or internal components.

- **Handling:**Handle the lamp with care.Avoid dropping or subjecting it to strong impacts,which can damage the glass or internal mechanism.
- **Storage:**When not in use for extended periods,store the lamp in a cool,dry place,away from direct sunlight and extreme temperatures.
- **Liquid Content:**The lamp contains a sealed liquid.Do not attempt to open the lamp or alter its contents.If the lamp is damaged and liquid leaks,avoid contact and dispose of the lamp safely according to local regulations.

TROUBLESHOOTING

If you encounter issues with your lamp,refer to the following common problems and solutions:

Problem	Possible Cause	Solution
Lamp does not turn on.	No power,loose connection,faulty switch.	Ensure the power cable is securely plugged into the lamp and the power source. Check if the wall outlet is functional by plugging in another device. Verify the on/off switch is in the "ON" position.
Volcano effect is not flowing or is sluggish.	Lamp is cold,insufficient warm-up time.	Allow the lamp to warm up for at least 30-60 minutes.The internal liquid needs to reach an optimal temperature for proper flow. Ensure the lamp is not in a cold environment.
Lamp is making unusual noises.	Internal components shifting,unstable surface.	Ensure the lamp is placed on a completely flat and stable surface. If noises persist,discontinue use and contact customer support.

SPECIFICATIONS

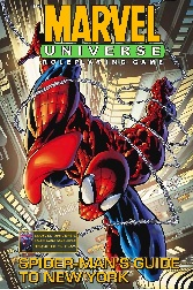



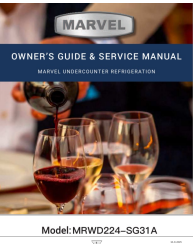
Model Number	WN201193
Brand	Marvel
Product Dimensions	11.4D x 11.4W x 36.8H Centimeters (approx.4.5" x 4.5" x 14.5")
Item Weight	1 kg 710 g (approx.3.77 lbs)
Lamp Type	Night Light / Decorative Lamp
Power Source	AC (USB Connectivity)
Finish Type	Painted
Shade Colour	Multicolor
Assembly Required	No
Batteries Required	No
Manufacturer	Idea Nuova

WARRANTY AND SUPPORT

For any product inquiries,technical support,or warranty information,please contact the manufacturer,Idea Nuova,or refer to the retailer's return policy.Please retain your proof of purchase for any warranty claims.

©2024 Marvel.All rights reserved.This manual is for informational purposes only.

Related Documents - WN201193

	<p>Marvel Universe RPG: Spider-Man's Guide to New York - Rules, Characters, and Adventures</p> <p>Explore the Marvel Universe Roleplaying Game with Spider-Man's Guide to New York. This supplement offers detailed character profiles, new game actions and modifiers, rules for creating adventures, and lore about Marvel's New York City. Perfect for GMs and players.</p>
	<p>Marvel United: Multiverse - Livret de Règles Officiel</p> <p>Apprenez à jouer à Marvel United: Multiverse avec ce livret de règles complet. Découvrez les héros, le vilain, la mise en place, le déroulement du jeu, les modes spéciaux et plus encore.</p>
	<p>Splendor: Marvel Board Game Rules and Gameplay Guide</p> <p>Comprehensive guide to Splendor: Marvel, the board game combining Marvel Super Heroes with strategic token collection and card recruitment. Learn setup, gameplay, and how to win the Infinity Gauntlet.</p>
	<p>Marvel Undercounter Refrigeration Owner's Guide & Service Manual MLWD224-SS01A</p> <p>Comprehensive owner's guide and service manual for the Marvel MLWD224-SS01A undercounter refrigeration unit. Includes installation, maintenance, troubleshooting, and warranty information.</p>
	<p>Marvel MRWD224-SG31A Undercounter Refrigerator Owner's Guide & Service Manual</p> <p>Comprehensive owner's guide and service manual for the Marvel MRWD224-SG31A undercounter refrigeration unit. Covers installation, operation, maintenance, troubleshooting, safety, and warranty information.</p>



[Marvel Villainous Board Game Rules and Instructions](#)

Official rules and instructions for the Marvel Villainous board game. Learn how to play as iconic Marvel villains like Thanos, Hela, Killmonger, Ultron, and Taskmaster to dominate the Marvel universe.