

LaView One Dot 1080P

LaView One Dot 1080P HD Camera User Manual

Model: One Dot 1080P (LV-PWF812-U)

Your guide to seamless home security and monitoring.

1. PRODUCT OVERVIEW

The LaView One Dot 1080P HD Camera is a compact and versatile Wi-Fi surveillance camera designed for indoor use. It provides full HD 1080P resolution with a 115° wide-angle lens, ensuring clear and comprehensive coverage. Equipped with enhanced IR night vision, two-way audio, and motion detection alerts, this camera allows for real-time monitoring and communication from anywhere via the LaView ONE app.



Figure 1.1: Front view of the LaView One Dot 1080P HD Camera.

Key Features:

- **HD 1080P Resolution:** Captures clear video with a 115° wide-angle view.
- **Enhanced IR Night Vision:** Provides clear visibility up to 25ft in low-light conditions.
- **Two-Way Audio:** Enables real-time communication through the camera.
- **Motion Detection Alerts:** Sends push notifications to your mobile device upon detecting movement.
- **Multiple Storage Options:** Supports encrypted Cloud storage, microSD card (up to 128GB, not included), and connection to a LaView NVR.
- **Mobile View:** Access live footage and recordings 24/7 via the LaView ONE App on iOS and Android devices.

2. PACKAGE CONTENTS

Before proceeding with the setup, please verify that all items listed below are included in your package:

- 1 x Wi-Fi 1080P Indoor Camera
- 1 x Power Adapter
- 1 x Metal Mounting Plate
- 2 x Mounting Screws
- 2 x Foam Stickers
- 2 x Anti-theft Stickers
- 1 x User Guide

3. SETUP GUIDE

Follow these simple steps to set up your LaView One Dot camera and get it ready for use.

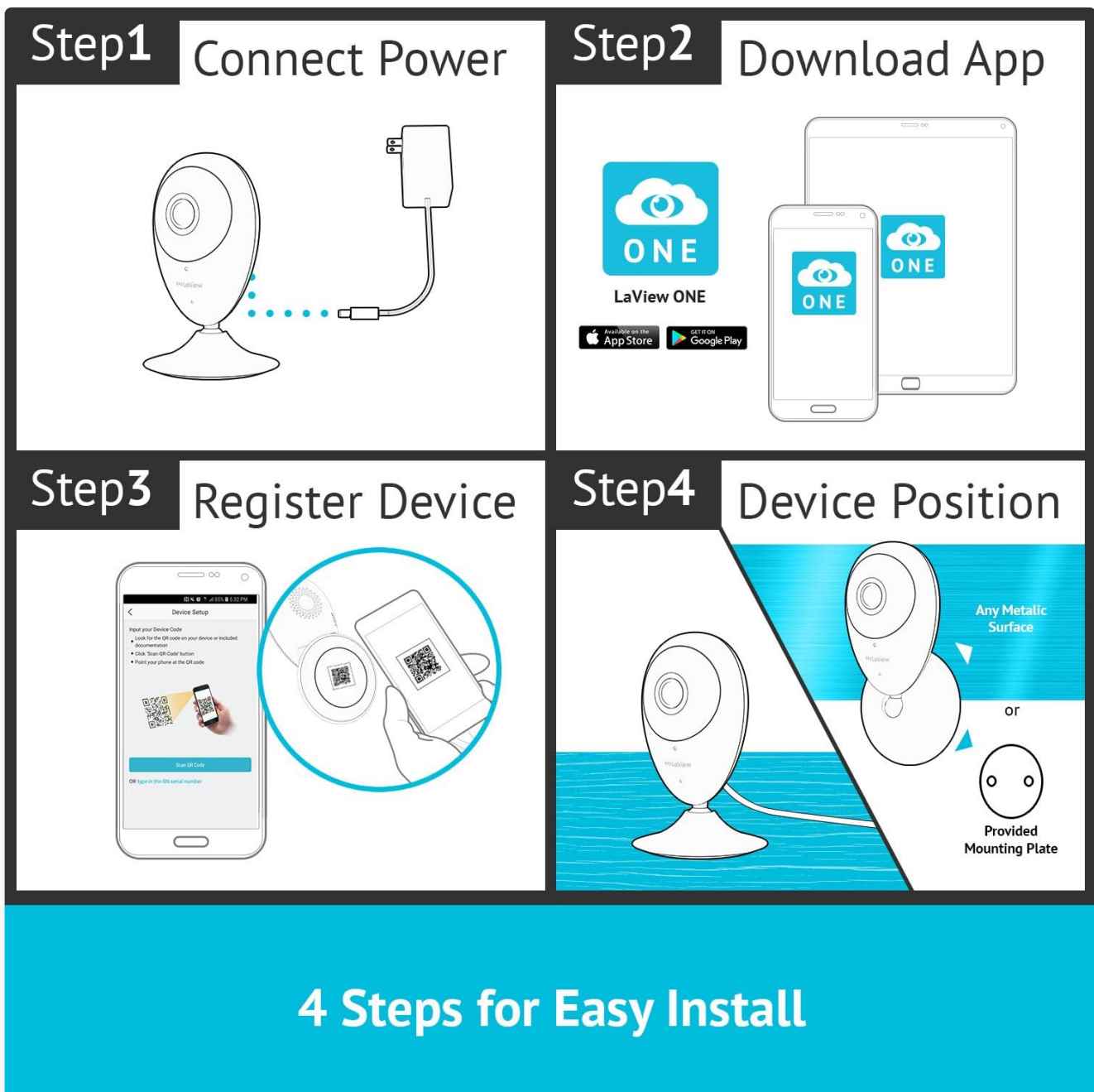


Figure 3.1: Visual guide for the four-step installation process.

1. Step 1: Connect Power

Plug the provided power adapter into the camera's power port and then into a standard electrical outlet. The camera will power on and initiate its startup sequence.

2. Step 2: Download the LaView ONE App

Search for "LaView ONE" in the Apple App Store (for iOS devices) or Google Play Store (for Android devices). Download and install the application on your smartphone or tablet.

3. Step 3: Register Device

Open the LaView ONE App and follow the on-screen instructions to create an account or log in. Select "Add Device" and scan the QR code located on the bottom of your camera or on its packaging. Follow the prompts to connect the camera to your 2.4GHz Wi-Fi network.

4. Step 4: Device Positioning

The LaView One Dot camera features a magnetic base for easy placement on any metallic surface. Alternatively, you can use the provided metal mounting plate, screws, and foam/anti-theft stickers to securely mount the camera on a wall or ceiling. Choose a location that provides the desired viewing angle and is within range of your

Wi-Fi signal.

4. OPERATING INSTRUCTIONS

Once your camera is set up, you can begin utilizing its various features through the LaView ONE App.

4.1 Live View and Video Quality

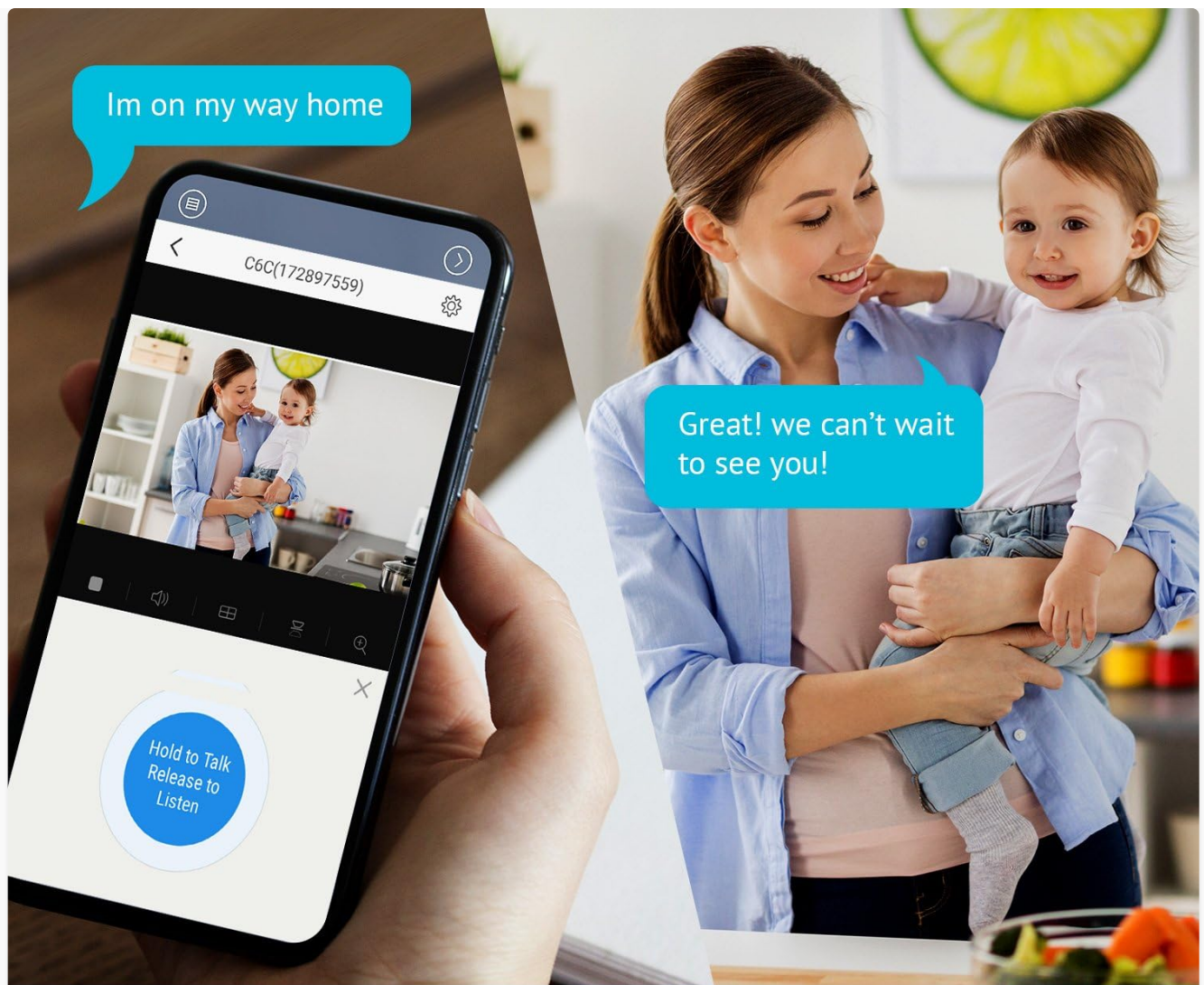
Access the live feed of your camera anytime, anywhere through the LaView ONE App. The camera streams in full HD 1080P, providing clear and detailed images.



Figure 4.1: The 1080P resolution provides significantly finer detail compared to 720P.

4.2 Two-Way Audio Communication

The built-in microphone and speaker allow for two-way audio communication. You can listen to the environment around the camera and speak through the camera from your mobile device.



Communicate with Two-way Audio

Figure 4.2: Use the LaView ONE App to engage in two-way audio communication.

4.3 Night Vision

The camera automatically switches to infrared (IR) night vision mode in low-light conditions, providing clear black-and-white video up to 25 feet.

Enhanced Infrared Night Vision



Clarity in the Dark with Night Vision

Figure 4.3: Enhanced IR night vision ensures clarity even in complete darkness.

4.4 Motion Detection and Alerts

Configure motion detection settings within the app to receive instant push notifications on your mobile device when movement is detected in the camera's field of view. You can adjust sensitivity and set detection zones.

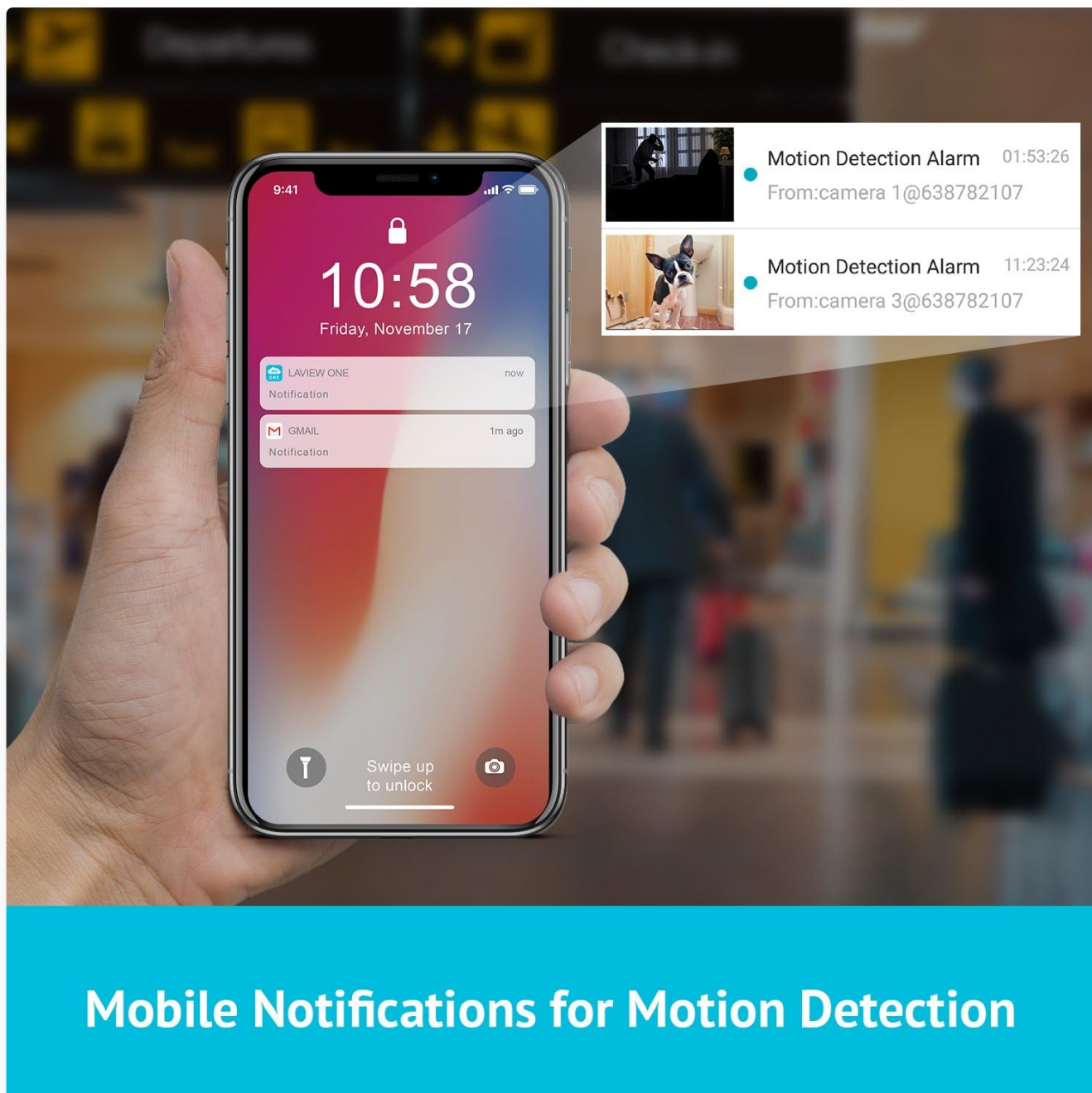


Figure 4.4: Receive immediate mobile notifications for detected motion.

4.5 Recording and Storage

The camera supports continuous recording or event-based recording (triggered by motion). Recordings can be stored in several ways:

- **Cloud Storage:** Securely store your recordings with encrypted cloud services (subscription may be required).
- **MicroSD Card:** Insert a microSD card (up to 128GB, not included) into the camera's slot for local storage.
- **LaView NVR:** Connect the camera to a compatible LaView Network Video Recorder for centralized storage.

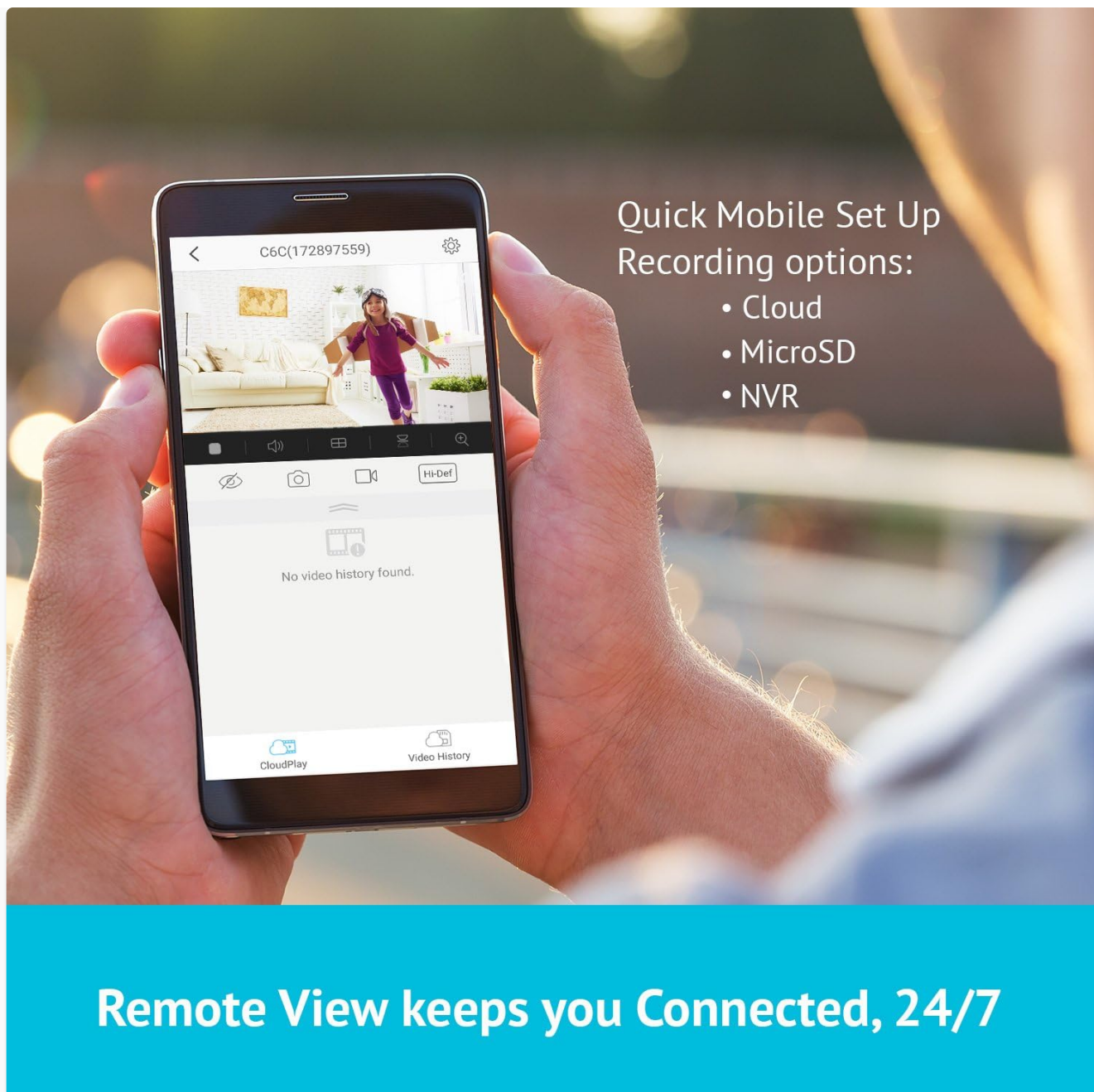


Figure 4.5: The LaView ONE App provides remote access and various recording options.

5. MAINTENANCE

Proper maintenance ensures the longevity and optimal performance of your LaView One Dot camera.

- **Cleaning:** Gently wipe the camera lens and body with a soft, dry cloth. Avoid using harsh chemicals or abrasive cleaners.
- **Firmware Updates:** Regularly check the LaView ONE App for available firmware updates. Keeping your camera's firmware updated ensures access to the latest features and security enhancements.
- **Power Supply:** Use only the original power adapter provided with the camera.
- **Environmental Conditions:** Ensure the camera is used within its specified operating temperature range (14°F~113°F) and avoid exposing it to direct water or extreme humidity.

6. TROUBLESHOOTING

If you encounter issues with your LaView One Dot camera, refer to the following common troubleshooting steps:

- **Camera Offline:**
 - Check if the camera is properly powered on.
 - Ensure your Wi-Fi network is active and stable.
 - Verify the camera is within range of your Wi-Fi router.
 - Restart the camera by unplugging and re-plugging the power adapter.
 - If the issue persists, try re-pairing the camera with the LaView ONE App.
- **Poor Video Quality:**
 - Ensure your internet connection is stable and has sufficient bandwidth.
 - Clean the camera lens with a soft cloth.
 - Check if there are any obstructions in front of the lens.
- **Motion Detection Not Working:**
 - Verify that motion detection is enabled in the LaView ONE App settings.
 - Adjust the motion detection sensitivity.
 - Ensure the camera's field of view is clear of constant movement (e.g., tree branches swaying) that might trigger false alerts.
- **Two-Way Audio Issues:**
 - Check the volume settings on your mobile device and within the app.
 - Ensure there are no obstructions blocking the camera's microphone or speaker.
 - Minimize background noise for clearer communication.

For further assistance, please refer to the official LaView support resources or contact customer service.

7. TECHNICAL SPECIFICATIONS

Feature	Specification
Model Name	One Dot 1080P
Part Number	LV-PWF812-U
Video Resolution	1080P Full HD
Image Sensor	1/2.7" Sensor
Lens	2.8mm
Viewing Angle	115°
IR Night Vision Range	Up to 25ft
Frame Rate	Self-adaptive 15fps
Digital Noise Reduction	3D DNR

Feature	Specification
Wide Dynamic Range	Digital WDR
Video Compression	H.264
Connectivity	Wi-Fi (2.4GHz)
Storage Options	Cloud, MicroSD (up to 128GB), LaView NVR
Operating Temperature	14°F~113°F (-10°C~45°C)
Dimensions (L x W x H)	4.33" x 2.28" x 1.50" (11 x 5.8 x 3.8 cm)
Weight	0.265 lbs (120 g)
Compatible OS	iOS, Android

8. WARRANTY AND SUPPORT

LaView products are designed for reliability and performance. For specific warranty details, please refer to the warranty card included in your product packaging or visit the official LaView website. Keep your purchase receipt as proof of purchase for warranty claims.

For technical support, troubleshooting assistance, or any inquiries regarding your LaView One Dot camera, please contact LaView Customer Service. Contact information can typically be found on the official LaView website or in the product's user guide.

Online Resources:

- Visit the official LaView website for FAQs, support articles, and software downloads.
- Check the LaView ONE App for in-app support and guides.

