

DEWENWILS SP-057

DEWENWILS Outdoor Mechanical Power Stake Timer

Waterproof, 6 Grounded Outlets (3 180° Rotatable), 6ft Cord

INTRODUCTION

Thank you for choosing the DEWENWILS Outdoor Mechanical Power Stake Timer. This device is designed to simplify your outdoor power management by providing timed control for lights, pumps, and other electrical appliances. Its robust, weatherproof construction ensures reliable performance in various outdoor conditions. Please read this manual carefully before use to ensure proper installation and operation.

IMPORTANT SAFETY INFORMATION

- Always ensure the product is properly grounded before use.
- Do not immerse the power stake in water. It is designed to be weatherproof, not submersible.
- Ensure all outlet covers are securely closed when not in use to protect from water and dust.
- Do not exceed the maximum load capacity of 1625W/13A.
- Keep children and pets away from the power stake during operation.
- Disconnect power before performing any maintenance or cleaning.

PACKAGE CONTENTS

- 1 x DEWENWILS Outdoor Mechanical Power Stake Timer
- 1 x Ground Stake (2 sections)

SETUP AND INSTALLATION

1. Attaching the Ground Stake

The power stake comes with a two-section ground stake for adjustable height. Screw the two stake sections together, then screw the assembled stake into the bottom of the power stake unit. Ensure it is securely fastened.



Image: The DEWENWILS power stake timer with its two-section ground stake fully assembled, ready for outdoor placement.

2. Positioning the Power Stake

Select a suitable outdoor location for the power stake. Push the ground stake firmly into the soil, ensuring the power stake unit is at least 1 foot above the ground to prevent waterlogging. The dark green color helps it blend seamlessly into your landscape.

3 OUTLETS ON THE RIGHT SIDE CAN BE ROTATED UP TO 180°

6 Outlets apply 6 devices running at the same time



6 Outlets apply simultaneous use

180°
Angle Adjustable

Image: The power stake timer installed in a grassy area, demonstrating its weatherproof design and proper ground clearance.

3. Connecting to Power

Plug the 6ft heavy-duty SJTW cord into a grounded outdoor electrical outlet. The long cord provides flexibility for placement.

WEATHERPROOF FOR OUTDOOR USE



Waterproof Covers protect outlets and timer dial from water, dust/damage.

Longer Stake keep outlets away from waterlogged pitch.

≥1FT
Above the ground.

Image: A close-up of the power stake's 6ft cord, emphasizing its length and heavy-duty construction for outdoor use.

OPERATING YOUR DEWENWILS POWER STAKE TIMER

1. Setting the Mechanical Timer

The timer allows for 48 ON/OFF settings per day, programmable in 30-minute intervals.

1. Lift all pins around the timer dial to the 'UP' position to start.
2. Press down the pins corresponding to the desired 'ON' times. Each pin represents a 30-minute interval.

3. Rotate the timer dial clockwise to set the current time, aligning it with the arrow indicator.
4. Ensure the manual override switch (located below the timer dial) is set to 'TIMER' mode.



Image: A detailed view of the mechanical timer dial, showing the individual pins for setting 30-minute ON/OFF intervals.

01 Lift all pins up to start.



02 Press down for desired on times.



03 Turn the dial to the current time.



04 Turn on the switch.

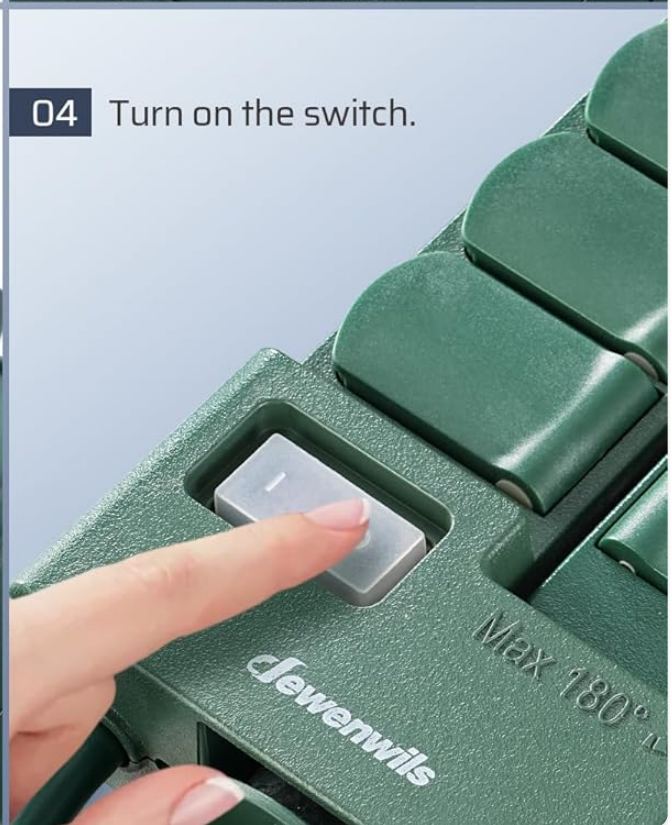


Image: Visual instructions demonstrating how to lift pins, press down for desired ON times, set the current time, and turn on the switch.

2. Using the Rotating Outlets

The power stake features 6 grounded outlets. Three outlets are fixed, while the other three can be rotated up to 180 degrees. This allows for flexible plug placement, accommodating various plug sizes and directions without blocking adjacent outlets.

LONG 6FT EXTENSION CORD

6_{FT}
SJTW 14/3C



Provide flexibility when plugging in the GFCI outlets outdoors and hard-to-reach outlets.

Image: The power stake highlighting the three fixed and three 180-degree rotatable outlets, designed for versatile use.

3. Manual Override Switch

A manual override switch is located on the front of the unit. This switch allows you to bypass the timer settings and manually turn the power ON or OFF as needed. Set it to 'TIMER' for programmed operation, 'ON' for continuous power, or 'OFF' to cut power.

4. Product Demonstration Video

Your browser does not support the video tag.

Video: An official product video from DEWENWILS demonstrating the features and functionality of the Outdoor Mechanical Power Stake Timer, including its waterproof design and ease of use.

KEY FEATURES

- **48 ON/OFF Settings Per Day:** Programmable in 30-minute intervals for precise control.
- **Rotating Outlets & 6 FT Cord:** 3 fixed and 3 rotatable outlets (up to 180°) with a generous 6ft extension cord for flexible setup.
- **Weatherproof for Outdoor Use:** Individual weatherproof covers protect outlets from water, dust, and damage, suitable for rainy or snowy days.
- **Durable & Safe:** UL listed, features a long heavy-duty SJTW cord, on/off switch with circuit breaker, and fireproof PPE material for superior protection.
- **Easy to Install & Program:** Simple assembly and intuitive dial for setting ON/OFF times.

MAINTENANCE

- Regularly inspect the power stake and cord for any signs of damage or wear.
- Keep the timer dial and outlet covers clean and free of debris.
- Ensure the ground stake remains firmly in place to prevent tipping.
- Store the unit in a dry, protected area when not in use for extended periods.

TROUBLESHOOTING

Problem	Possible Cause	Solution
Lights/Devices not turning ON/OFF at set times.	Timer pins not set correctly; Manual override switch in wrong position; Current time not set.	Ensure pins are pressed down for ON times and up for OFF times. Check manual override switch is in 'TIMER' mode. Rotate dial to current time.
No power to outlets.	Circuit breaker tripped; Unit unplugged; Power outage.	Check the circuit breaker on the unit and reset if tripped. Ensure the unit is securely plugged into a live outlet. Verify power to the main outlet.
Water inside outlet covers.	Covers not securely closed.	Ensure all individual weatherproof covers are firmly closed when not in use.

PRODUCT SPECIFICATIONS

Specification	Value
Brand	DEWENWILS
Model Number	SP-057
Voltage	125 Volts

Specification	Value
Input Current	13 Amps
Max Wattage	1625W
Cord Length	6 ft
Outlets	6 Grounded Outlets (3 fixed, 3 rotatable 180°)
Timer Intervals	30-minute (48 settings per day)
Material	Fireproof PPE
Certifications	UL Listed
Product Dimensions	11.68 x 12.95 x 26.16 inches
Item Weight	1.83 Pounds

WARRANTY AND CUSTOMER SUPPORT

DEWENWILS products are designed for durability and reliability. For any questions, troubleshooting assistance, or warranty claims, please contact DEWENWILS customer support. Refer to the product packaging or the official DEWENWILS website for the most up-to-date contact information.