

Manuals+

[Q & A](#) | [Deep Search](#) | [Upload](#)

manuals.plus /

- › [MEILAN](#) /
- › [MEILAN M4 Wireless Bike Computer User Manual](#)

MEILAN M4

MEILAN M4 Wireless Bike Computer User Manual

Model: M4 | Brand: MEILAN

1. PRODUCT OVERVIEW

The MEILAN M4 is a versatile wireless bike computer designed for both indoor and outdoor cycling. It utilizes Bluetooth 4.0 and ANT+ dual wireless transmission technology to provide comprehensive cycling data, including speed, cadence, distance, riding time, calorie consumption, and temperature. Its large 2.5-inch LCD display with adjustable backlight ensures clear readability in various lighting conditions. The device is IPX5 waterproof and features an 800mAh rechargeable battery for extended use.



Image: MEILAN M4 Wireless Bike Computer with included accessories, including the main unit, mounts, and sensors.

2. What's in the Box

- MEILAN M4 Bike Computer Unit
- Speed/Cadence Sensor (C3)
- Bike Mount (for stem or handlebar)
- F-Mount (for handlebar)
- Rubber Bands and Silicone Pads for mounting
- Allen Key
- Nylon Ties
- Cadence Magnet
- Spoke Magnet
- USB Charging Cable



Image: All components included with the MEILAN M4 Wireless Bike Computer.

3. INSTALLATION GUIDE

3.1 Installing the Bike Mount

The MEILAN M4 can be mounted on either the bike stem or the handlebar using the provided bike mount or F-mount.

3.1.1 Bike Mount Installation (Stem or Handlebar)

Select two suitable rubber bands based on the size of your bike stem or handlebar. Use the rubber bands diagonally to securely fix the mount. Once the mount is in place, slide the MEILAN M4 unit onto the mount until it clicks into position.

IPX5 Waterproof

Rain or Shine, we're got you covered!



Image: Diagrams illustrating how to install the bike computer mount on both the handlebar and the stem.

Your browser does not support the video tag.

Video: Detailed instructions for installing the bike mount on the stem (0:08-0:40) and handlebar (0:40-1:05).

3.1.2 F-Mount Installation (Handlebar)

For the F-Mount, first remove the screw with the Allen key. Select a suitable silicone pad according to the handlebar size. Reassemble the F-mount with the silicone pad and secure it to the handlebar using the Allen key. Once the F-mount is securely attached, slide the MEILAN M4 unit onto it.

Your browser does not support the video tag.

Video: Instructions for installing the F-Mount on the handlebar (Method 1: 1:05-1:56, Method 2: 1:56-2:14).

3.2 Installing the Speed and Cadence Sensor (C3)

The C3 sensor is a dual-function sensor for both speed and cadence. Before installation, ensure the battery insulator sheet is removed to activate the sensor. Loosen the sensor arm screw with a Phillips screwdriver to adjust its position.

- **Mounting the Sensor:** Secure the sensor to the bike frame near the crank arm using the provided rubber bands or nylon ties.

- **Mounting the Cadence Magnet:** Attach the cadence magnet to the crank arm. Adjust its position so that it passes through the sensor zone labeled "CADENCE" on the sensor. The gap between the cadence magnet and the sensor should be approximately within 2 cm (0.79 inch).
- **Mounting the Spoke Magnet:** Attach the spoke magnet to a spoke on your rear wheel. Adjust its position so that it passes through the sensor zone labeled "SPEED" on the sensor. The gap between the spoke magnet and the sensor should also be approximately within 2 cm (0.79 inch).
- **Final Tightening:** Once everything is aligned and working correctly, tighten the nylon ties for both the sensor and the cadence magnet to ensure stability.

Your browser does not support the video tag.

Video: Detailed steps for installing the speed and cadence sensor, including battery activation (2:14-3:33), mounting the spoke magnet (3:33-4:15), and final tightening (4:15-4:49).

4. APP SETUP AND CONNECTIVITY

The MEILAN M4 can be connected to your smartphone via the MEILAN app (Navihood). This allows for easy configuration, data synchronization, and review of your ride history.

- **Download the App:** Search for "Navihood" on the App Store (iOS) or Google Play (Android) and install it.
- **Register Account:** Create a MEILAN app account and allow access to Bluetooth.
- **Pairing the Device:**
 1. Power on your MEILAN M4.
 2. In the app, tap "+ Add device" on the home screen and select "BLADE" (M4).
 3. The app will search for the device. Once found, tap on it to connect. The device will display "PHONE CONNECT".
- **Sensor Pairing:**
 1. From the device details screen in the app, tap "Sensor".
 2. Rotate your bike wheel or crank arm to activate the sensor.
 3. Tap "Add sensor" in the app. Once the sensor is found, confirm the connection. The sensor icon in the app will turn green, and the flashing on the BLADE unit will stop.
- **Configure Wheel Circumference:**
 1. In the sensor settings, tap "Configure wheel circumference".
 2. Choose the matching wheel circumference from the list or enter the value manually.
- **Authorize Third-Party Apps:** The MEILAN app supports data synchronization with platforms like Strava and TrainingPeaks. Navigate to the "Share" section in the app to authorize these connections.

Your browser does not support the video tag.

Video: Comprehensive guide on setting up the MEILAN M4 with your phone, including app download, device pairing, sensor pairing, wheel circumference configuration, and authorizing third-party apps (4:49-6:49).

5. OPERATION

The MEILAN M4 features intuitive button controls for managing your ride data.

- **Start Recording:** Press the middle button (■) to start recording your ride data.
- **View Data:** Press the right button (≡) to view different measurement data screens.
- **Start Next Lap:** Press the left button (↺) for a moment to start the next lap.
- **Manual Pause:** Press the middle button (■) to manually pause the BLADE when you stop moving. The BLADE

also has an automatic Start/Stop function, so manual operation is not required for short pauses.

- **NOTE:** After manual pause, you must press the middle button (⏏) to start manually again before you can resume riding.
- **Save Data:** After the riding is finished, long press the middle button (⏏) to save your ride data.
- **Exit History View:** Press the right button (⏏) to exit the history view.

Your browser does not support the video tag.

Video: Demonstrates how to start and stop a ride, including manual pause and saving data (6:49-7:15).

6. VIEWING YOUR RIDE HISTORY

You can review your ride history both on your smartphone via the MEILAN app and directly on the BLADE unit.

6.1 Viewing History on Smartphone (MEILAN App)

After saving your ride, the data will be uploaded to the MEILAN app. You can view detailed statistics, graphs for speed and cadence, and other metrics within the app.

Your browser does not support the video tag.

Video: Shows how to view your ride history on the MEILAN app, including detailed data and graphs (7:15-7:54).

6.2 Viewing History on BLADE

- **Enter/Exit History View:** Long press the right button (⏏) to enter or exit the history view.
- **Check Measurement Data:** Press the middle button (⏏) to check different measurement data in the record you are viewing.
- **Check Segment Data (Lap):** Press the left button (⏏) to check the segment data (lap) in the record you are viewing.
- **Scroll to Next:** Press the right button (⏏) to scroll to the next record.

Your browser does not support the video tag.

Video: Demonstrates how to view ride history directly on the BLADE unit (7:54-8:25).

7. SPECIFICATIONS

Feature	Detail
Brand	MEILAN
Model Name	M4
Connectivity Technology	Wireless (Bluetooth 4.0 / ANT+)
Screen Size	2.5 Inches
Display Type	LCD (with Backlight)
Battery Life	80 Hours (without backlight)
Battery Type	800MAH Rechargeable Lithium Ion
Waterproof Rating	IPX5
Sensor Type	Included Speed Sensor & Cadence Sensor

Mounting Type	On the handlebar/stem
Product Dimensions	4.7"L x 2.2"W x 5.5"H
Item Weight	3.52 ounces



BLE 4.0 & ANT+



LCD Display



IPX5 Waterproof



Wireless Design



800mAh Battery



USB Rechargeable



Image: The MEILAN M4 bike computer mounted on a bicycle, showcasing its features like BLE 4.0 & ANT+, LCD display, IPX5 waterproof, wireless design, 800mAh battery, and USB rechargeable capabilities.



Image: Various display modes of the MEILAN M4, showing average speed, maximum speed, riding distance, total mileage, total riding time, current time, calories, and temperature.



- ✓ **3-Level**
Backlight Brightness
- ✓ **2.5 inch**
Anti-glare Large Screen
- ✓ **High Grade**
IML Anti-scratch Mirror

Data can be clearly displayed from all angles even under the sunlight

Image: Close-up of the MEILAN M4 screen, highlighting its 3-level backlight brightness, 2.5-inch anti-glare large screen, and high-grade IML anti-scratch mirror for clear data display even under sunlight.

Battery Life



M4 Bike Computer

Built-in a 800mAh rechargeable battery
keep running for 100 hours after fully charged

Sensor

Equipped with a CR2032 coin cell battery
keep running for 12 months (1 hour/day)

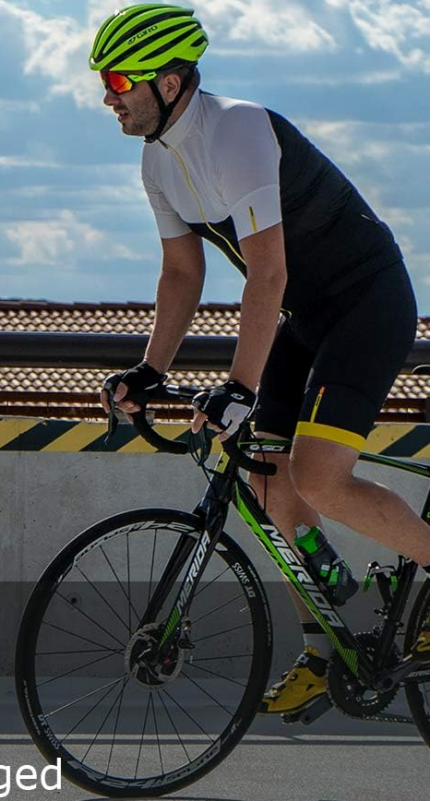
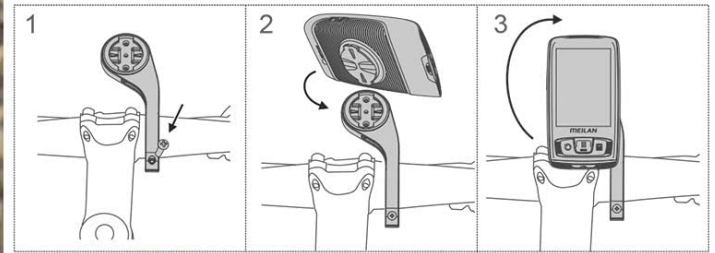


Image: The MEILAN M4 bike computer being splashed with water, demonstrating its IPX5 waterproof design for use in rain or snow.



On the Handlebar



On the Stem

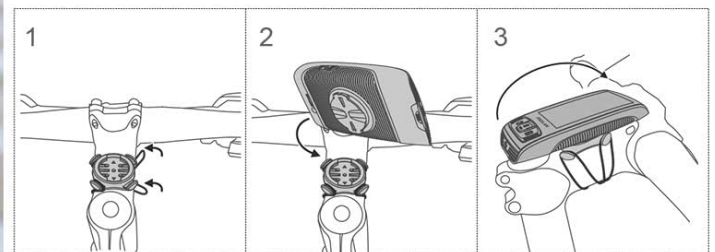


Image: Illustration of the MEILAN M4's battery life, showing the built-in 800mAh rechargeable battery lasting 100 hours after a full charge, and the sensor's CR2032 coin cell battery lasting 12 months (1 hour/day).

8. MAINTENANCE AND CARE

- **Cleaning:** Wipe the unit and sensors with a soft, damp cloth. Do not use abrasive cleaners or solvents.
- **Storage:** Store the device in a cool, dry place when not in use. Avoid extreme temperatures.
- **Battery:** Recharge the main unit regularly to maintain battery health. For the sensor, replace the CR2032 coin cell battery when indicated.
- **Water Resistance:** While IPX5 waterproof, avoid submerging the device in water. Ensure the USB charging port cover is securely closed when not charging.

9. TROUBLESHOOTING

- **No Data Displayed:**

- Ensure the sensor battery insulator sheet is removed and the battery is active.
- Check the distance between the sensor and magnets (should be within 2 cm / 0.79 inch).
- Verify that the sensor is correctly paired with the main unit via the app.
- Confirm the sensor arm is correctly positioned to align with the magnets.

- **Inaccurate Readings:**

- Re-check the wheel circumference setting in the app.
- Ensure magnets are securely attached and pass directly through the sensor's detection zone.

- **Device Not Powering On:**

- Charge the device fully using the USB cable.
- Perform a soft reset by holding down the power button for an extended period (refer to specific device instructions if available).

- **App Connectivity Issues:**

- Ensure Bluetooth is enabled on your smartphone.
- Restart both the MEILAN M4 and the smartphone app.
- Check for app updates.

10. WARRANTY AND SUPPORT




MEILAN products are directly produced by the MEILAN Factory. We provide a three-month replacement policy and a one-year warranty for after-sales service.



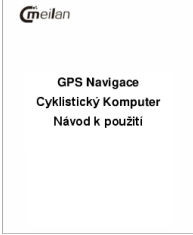
If you encounter any problems during use, please feel free to contact our customer service team. We are committed to providing the best solution for you.

For further assistance, please visit the official MEILAN Store on Amazon: [MEILAN Store](#)

© 2024 MEILAN. All rights reserved.

Related Documents - M4

	<p>MEILAN M3 GPS Bike Computer User Guide and FAQ</p> <p>A comprehensive guide and frequently asked questions for the MEILAN M3 GPS Bike Computer, covering setup, features, and troubleshooting.</p>
	<p>MEILAN M3 Mini GPS Bike Computer Setup Guide</p> <p>A concise guide to setting up the MEILAN M3 Mini GPS Bike Computer, covering power on, setting mode, time zone, units, and initial odometer input.</p>
	<p>MEILAN Blade Wireless Bike Computer Quick Start Guide</p> <p>Quick start guide for the MEILAN Blade Wireless Bike Computer, covering installation, setup, sensor pairing, workout tracking, and history viewing. Includes instructions for mounting the device and sensors, configuring settings, and using the MEILAN app.</p>

	<p>MEILAN MINI GPS Bike Computer User Guide</p> <p>A comprehensive guide to the MEILAN MINI GPS Bike Computer, covering installation, usage, button functions, history review, icons, abbreviations, safety statements, and charging instructions.</p>
	<p>MEILAN Blade Wireless Bike Computer Quick Start Guide</p> <p>This guide provides instructions for installing, setting up, and using the MEILAN Blade Wireless Bike Computer, including sensor pairing, workout features, and technical specifications.</p>
	<p>Meilan M1 GPS Cycling Computer User Manual</p> <p>Comprehensive user manual for the Meilan M1 GPS cycling computer, covering setup, features, functions, training management, connectivity with apps like Komoot, device parameters, and warranty information.</p>