

VECLESUS VMS

VECLESUS VMS 1080P HD Wired Backup Camera System User Manual

Model: VMS

1. INTRODUCTION

This manual provides detailed instructions for the installation, operation, and maintenance of your VECLESUS VMS 1080P HD Wired Backup Camera System. This system is designed to enhance safety for large vehicles by providing a clear rear view. It features a 7-inch HD monitor and an IP69K waterproof camera with night vision capabilities. The system operates on a wide voltage range of 9-36V, making it suitable for various heavy-duty and long vehicles.



Figure 1: VECLESUS VMS Backup Camera System components.

2. PACKAGE CONTENTS

Verify that all items listed below are included in your package. If any items are missing or damaged, please contact customer support.

- 1080P HD Car Backup Camera
- 7-inch HD Car IPS LCD Monitor
- 66FT (20 Meters) Extension Video Cord
- Power Cord (9-36V)
- User Manual
- Installation Accessories (Monitor Bracket, Straps, Clamps)
- DC Terminal Conversion Cable (for car charger option)

All Parts in the Package



Monitor



66 feet (20 meters)
Extension Video Cable



Backup Camera



Monitor Bracket



Power Cord



Manual



Car Charger (spare)



DC Terminal Conversion Cable



Straps



Clamps

Figure 2: Complete package contents.

3. INSTALLATION

3.1 Wiring Diagram (Fuse Box Connection)

This system is typically powered via the vehicle's fuse box. Follow the diagram below for standard installation.

1. Connect the **red wire** of the power cord to an ACC (Accessory) power source (9-36V) in your fuse box. This ensures the system turns on/off with the vehicle ignition.
2. Connect the **black wire** to a metal ground point (GND) or an iron part of the vehicle chassis.
3. Connect the **green wire** to the reverse gear circuit. This acts as a trigger, automatically displaying the reverse image and guidelines when the vehicle is in reverse (if the camera is connected to CH2).
4. Connect the camera to the CH2 input of the monitor using the 66ft extension video cord.
5. If continuous observation is desired (e.g., while driving or parking), connect the camera to CH1 and disregard the green reverse wire connection.

Installation Diagram

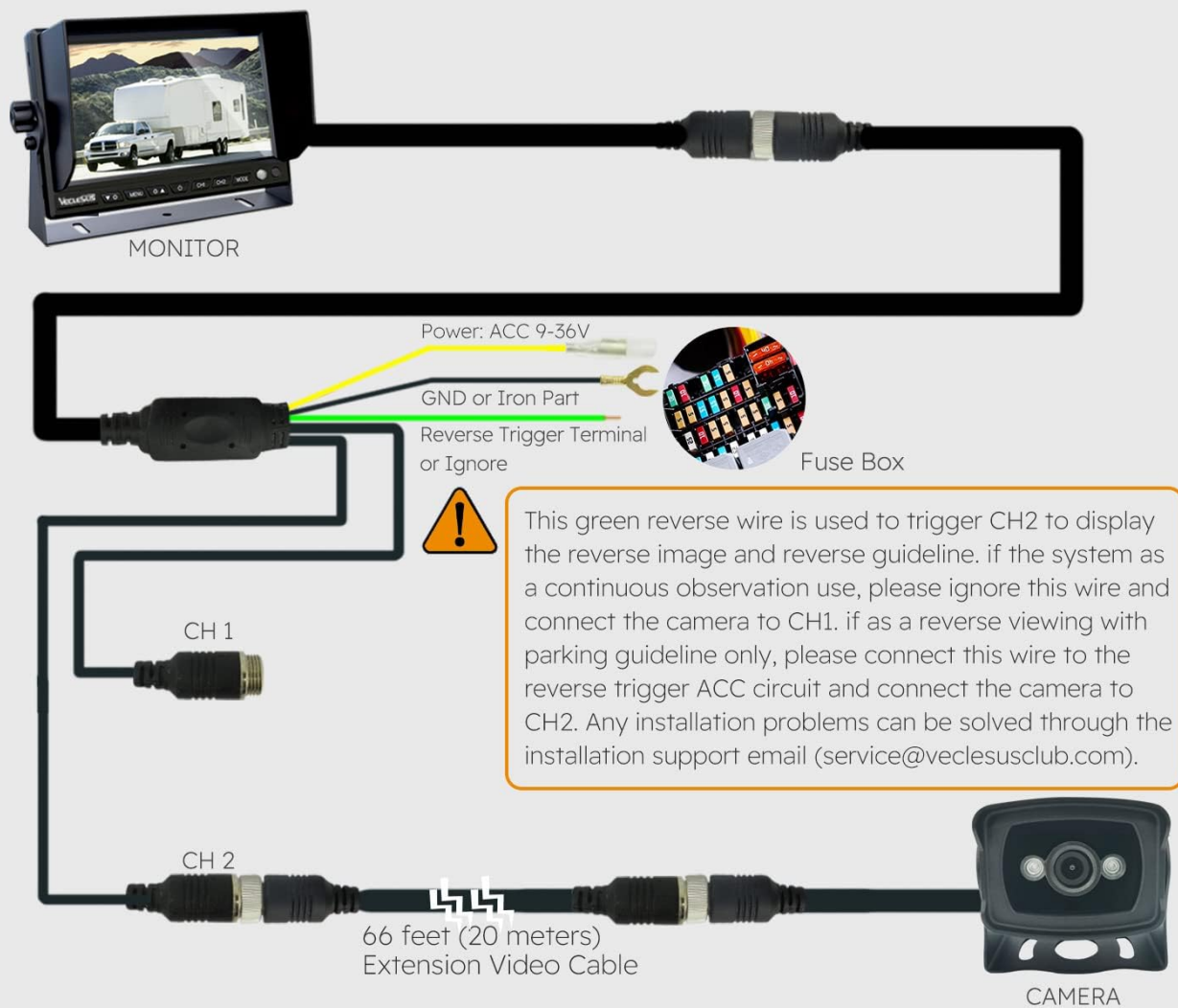


Figure 3: Standard wiring diagram for fuse box connection.

3.2 Alternative Power Connection (Car Charger)

For a simpler installation without connecting to the fuse box, you can use the provided car charger (spare) and DC Terminal Conversion Cable.

1. Connect the DC Terminal Conversion Cable to the power input of the monitor.
2. Plug the car charger into your vehicle's cigarette lighter socket.
3. Connect the DC Terminal Conversion Cable to the car charger.
4. **Note:** If using this method for continuous observation, the system will only be powered by the car charger. If you require the reverse trigger function, it is still necessary to connect the green reverse cable to the fuse box as described in Section 3.1.

How To Connect The Car Chager (Spare)?

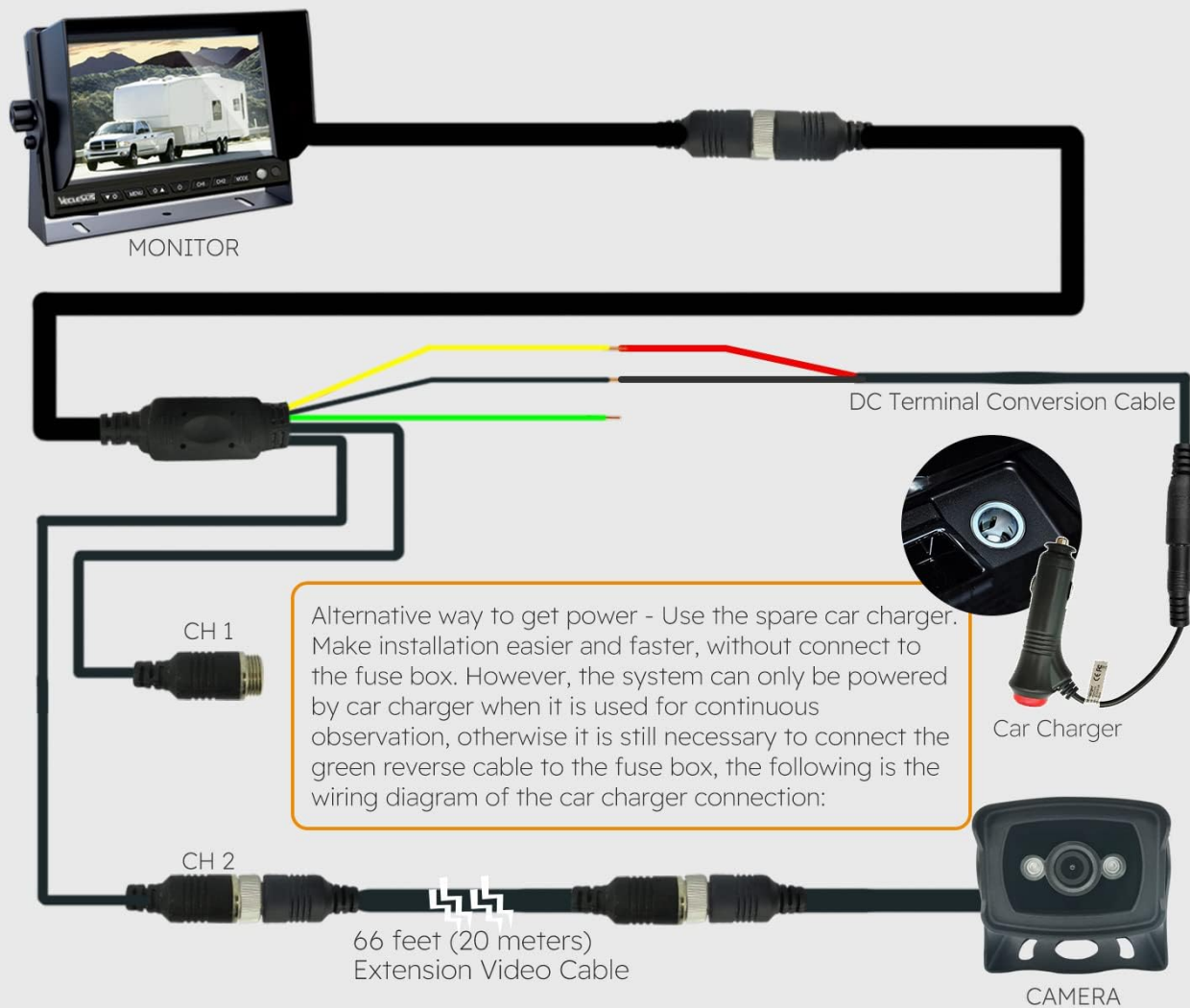


Figure 4: Alternative wiring using a car charger.

3.3 Mounting the Monitor and Camera

- The 7-inch LCD monitor can be attached to the dashboard or windshield using the provided brackets. Ensure the mounting location does not obstruct your view or interfere with vehicle controls.
- Mount the camera securely at the rear of your vehicle, ensuring a clear line of sight. The IP69K rating ensures durability in various weather conditions.

4. OPERATING INSTRUCTIONS

Once installed and powered, the system will automatically activate when the vehicle is turned on (if connected to ACC).

- **Power On/Off:** The monitor will automatically turn on/off with the vehicle's ignition if wired to ACC.
- **Channel Selection:** The monitor supports two video inputs (CH1 and CH2). Use the buttons on the monitor to switch between channels. CH2 is typically used for the backup camera and can be triggered by the reverse gear. CH1 can be used for an additional camera (e.g., front or side view).
- **Menu Settings:** Access the OSD (On-Screen Display) menu using the monitor buttons to adjust settings such

as brightness, contrast, color, and display mode.

- **Reverse Trigger:** When the green wire is connected to the reverse circuit and the vehicle is put into reverse, the monitor will automatically switch to the CH2 camera view and display parking guidelines.

5. FEATURES

- **1080P HD Resolution:** Provides clear and detailed images for improved visibility.
- **7-inch Wide Screen Monitor:** Offers a large display for easy viewing.
- **IP69K Waterproof Camera:** Designed to withstand harsh weather conditions, ensuring reliable performance.
- **Super IR Night Vision:** Infrared LEDs provide low light compensation, ensuring clear images even in complete darkness.
- **Wide Voltage Compatibility (9-36V):** Suitable for a broad range of vehicles, including trucks, RVs, buses, and other heavy-duty vehicles.
- **Two Video Inputs (CH1/CH2):** Allows for connection of a primary backup camera and an additional camera for enhanced safety.



Figure 5: Camera durability and night vision features.

6. MAINTENANCE

- **Cleaning:** Regularly clean the camera lens and monitor screen with a soft, damp cloth. Avoid abrasive cleaners that may scratch surfaces.
- **Cable Inspection:** Periodically check all cables and connections for wear, damage, or loose fittings. Ensure all connections are secure to prevent signal loss.
- **Environmental Protection:** While the camera is IP69K waterproof, extreme temperatures or prolonged exposure to harsh chemicals should be avoided to maximize product lifespan.

7. TROUBLESHOOTING

If you encounter issues with your VECLESUS VMS system, refer to the following common problems and solutions:

Problem	Possible Cause	Solution
No image on monitor	<ul style="list-style-type: none">◦ No power to monitor◦ Loose video cable connection◦ Faulty camera or monitor	<ul style="list-style-type: none">◦ Check power connections to ACC and ground.◦ Ensure all video cables are securely connected.◦ Test components if possible; contact support if issue persists.
Fuzzy or distorted image	<ul style="list-style-type: none">◦ Dirty camera lens◦ Loose video cable connection◦ Interference	<ul style="list-style-type: none">◦ Clean the camera lens.◦ Check video cable connections.◦ Ensure cables are routed away from strong electrical sources.
Monitor does not switch to reverse view	<ul style="list-style-type: none">◦ Green trigger wire not connected◦ Incorrect camera channel selected	<ul style="list-style-type: none">◦ Verify the green wire is correctly connected to the reverse circuit.◦ Ensure the camera is connected to CH2.

For further assistance, please refer to the contact information in the Warranty and Support section.

8. SPECIFICATIONS

Feature	Detail
Monitor Size	7 Inches
Display Technology	LCD
Camera Resolution	1080P HD
Camera Waterproof Rating	IP69K
Power Supply	DC 9-36V
Real Angle of View	170 Degrees
Video Input Channels	2 (CH1, CH2)
Extension Cable Length	66 ft (20 meters)
Operating Temperature	-40°F to 158°F (-40°C to 70°C)

9. WARRANTY AND SUPPORT

The VECLESUS VMS Backup Camera System comes with a 1-year warranty. VECLESUS provides 24-hour technical support and replacement services.

For any problems or inquiries, please contact VECLESUS customer support via Amazon or through the contact methods provided in the user instruction included in your package.