

MUSE M-785 DAB

MUSE M-785 Digital Radio with CD Player and Bluetooth

USER MANUAL

Model: M-785 DAB | Brand: MUSE

1. Introduction

The MUSE M-785 is a versatile digital radio system offering a wide range of audio playback options. It supports digital DAB/DAB+ and analog FM radio reception with RDS for station information. Users can enjoy music from various sources including a built-in CD player (compatible with CD, CD-R, CD-RW, and MP3 CDs), Bluetooth for wireless streaming from smartphones or tablets, and USB for MP3 playback and device charging. The system delivers powerful and clear sound through its 60W music power output, housed in a wooden cabinet, and features customizable sound settings including an equalizer, treble/bass adjustments, and a Loudness function. Additional features include a clock display, alarm, and sleep timer, along with a dimmable screen.

2. Safety Instructions

- Read all instructions carefully before operating the device.
- Keep the manual for future reference.
- Do not expose the unit to rain or moisture to prevent fire or electric shock.
- Ensure proper ventilation; do not block any ventilation openings.
- Place the unit on a stable, flat surface.
- Disconnect the power plug from the mains during lightning storms or when unused for long periods.
- Do not open the unit. Refer all servicing to qualified personnel.

3. Package Contents

Please check that the following items are included in your package:

- MUSE M-785 Digital Radio Unit
- Remote Control
- AUX Cable (3.5 mm)
- 75 Ohm Antenna Cable
- User Manual (this document)

4. Product Overview

This section provides an overview of the main components and controls of your MUSE M-785 unit.



Figure 1: Front Panel of the MUSE M-785 Digital Radio. The unit is black with a central control panel. The blue-backlit LCD display shows 'Digital Radio FM/DAB Starting'. Below the display are circular buttons for SOURCE, BAND, INFO, SCAN, playback controls (play/pause, skip forward/backward), and volume/tuning. A CD tray slot is located beneath these buttons. At the bottom of the panel, there are 'Bluetooth DAB+' logos, a 'USB CHARGING' port (5V=1A), an 'AUX IN' jack, and a 'USB MP3' port. An 'NFC' logo is visible on the top right of the control panel. The MUSE brand logo is on the bottom right of the unit. The unit rests on four small, round feet.

Front Panel Controls and Connections:

- **Display:** Shows current mode, station information, track details, time, etc.
- **SOURCE Button:** Selects input source (DAB, FM, CD, Bluetooth, USB, AUX).
- **BAND Button:** Switches between FM and DAB/DAB+ radio bands.
- **INFO Button:** Displays additional information (e.g., RDS data, track info).
- **SCAN Button:** Initiates automatic station scanning in radio mode.
- **Playback Controls:** Play/Pause, Skip Forward, Skip Backward for CD/USB/Bluetooth.
- **Volume/Tuning Buttons (P+, P-, ++, +-):** Adjusts volume, navigates menus, or tunes radio frequencies.
- **CD Tray Slot:** For inserting audio CDs.
- **USB CHARGING Port (5V=1A):** For charging external devices.
- **AUX IN Jack (3.5mm):** For connecting external audio devices.
- **USB MP3 Port:** For playing MP3 files from a USB flash drive.
- **NFC Area:** For quick Bluetooth pairing with compatible devices.

5. Setup

5.1 Power Connection

1. Ensure the unit is placed on a stable surface.
2. Connect the power cable to the AC IN socket on the rear of the unit.
3. Plug the other end of the power cable into a standard wall outlet (100-240V ~ 50/60Hz).

5.2 Antenna Connection

1. Connect the supplied 75 Ohm antenna cable to the FM/DAB antenna input on the rear of the unit.
2. Extend the antenna fully and position it for optimal reception.

5.3 Initial Setup / First Use

1. Press the Power button to turn on the unit.
2. The unit may automatically perform a DAB station scan upon first use. Allow this process to complete.
3. Set the current time and date if prompted, or access these settings via the menu.

6. Operating Instructions

6.1 Basic Operation

- **Power On/Off:** Press the Power button on the unit or remote control.
- **Volume Adjustment:** Use the Volume buttons on the unit or remote control.
- **Source Selection:** Press the SOURCE button repeatedly to cycle through available input modes (DAB, FM, CD, Bluetooth, USB, AUX).

6.2 Radio (DAB/DAB+/FM)

1. Select DAB or FM mode using the SOURCE or BAND button.
2. **DAB/DAB+ Radio:** The unit will automatically scan for available digital stations. Use the tuning buttons to navigate through the station list.
3. **FM Radio:** Press the SCAN button to automatically search for and store FM stations. Alternatively, use the tuning buttons for manual tuning.
4. **Station Presets:** To save a station, tune to the desired station, then press and hold a preset number button on the remote or follow on-screen instructions.
5. **RDS Function:** In FM mode, RDS (Radio Data System) will display station name and other information if available.

6.3 CD Player

1. Select CD mode using the SOURCE button.
2. Insert an audio CD (CD, CD-R, CD-RW, or MP3 CD) into the CD tray slot with the label side facing up.
3. The unit will automatically begin playback.
4. Use the playback control buttons (Play/Pause, Skip Forward/Backward) to manage playback.

6.4 Bluetooth Connection

1. Select Bluetooth mode using the SOURCE button. The display will show "Pairing" or similar.
2. On your smartphone or tablet, enable Bluetooth and search for available devices.
3. Select "MUSE M-785" from the list of devices to pair.
4. Once paired, you can stream audio from your device to the M-785.
5. **NFC Pairing:** For NFC-enabled devices, simply tap your device on the NFC area of the M-785 for quick pairing.

6.5 USB Playback and Charging

1. **USB MP3 Playback:** Insert a USB flash drive containing MP3 files into the "USB MP3" port. Select USB mode via the SOURCE button. Playback will begin automatically.
2. **USB Charging:** Connect your device's USB charging cable to the "USB CHARGING" port (5V=1A) to charge your device. This port is for charging only and does not support data transfer for music playback.

6.6 AUX Input

1. Connect an external audio device (e.g., MP3 player, smartphone) to the "AUX IN" jack using the supplied 3.5mm AUX cable.
2. Select AUX mode using the SOURCE button.
3. Control playback from your external device.

6.7 Alarm Clock Function

The M-785 features an alarm function. Refer to the on-screen menu for setting the alarm time and alarm source (Buzzer, Radio, CD, or USB). The display also shows the current time and has a dimmable feature for night use.

6.8 Sound Settings

Customize your audio experience:

- **Equalizer:** Access preset equalizer modes or manually adjust bass and treble levels (typically from -3 to +3).
- **Loudness:** Enable or disable the Loudness function to enhance bass and treble at low volume levels.

7. Maintenance

- **Cleaning:** Use a soft, dry cloth to clean the unit's exterior. Do not use abrasive cleaners or solvents.
- **CD Player Care:** Handle CDs by their edges. If a CD is dirty, wipe it gently with a soft, lint-free cloth from the center outwards.
- **Storage:** When not in use for extended periods, store the unit in a cool, dry place.

8. Troubleshooting

Problem	Possible Cause	Solution
No power	Power cable not connected; Wall outlet not active	Check power cable connection; Try a different outlet
No sound	Volume too low; Incorrect source selected; Mute activated	Increase volume; Select correct source; Deactivate mute
Poor radio reception	Antenna not extended/positioned correctly; Weak signal area	Extend and reposition antenna; Try moving the unit to a different location
CD not playing	CD inserted incorrectly; CD dirty/scratched; Incorrect format	Re-insert CD correctly; Clean or replace CD; Ensure CD is compatible (audio CD, MP3 CD)



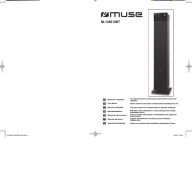

Problem	Possible Cause	Solution
Bluetooth pairing fails	Unit not in pairing mode; Device too far; Bluetooth off on external device	Ensure M-785 is in Bluetooth mode; Move device closer; Enable Bluetooth on external device

9. Specifications

Feature	Specification
Brand	MUSE
Model Number	M-785 DAB
Color	Black
Connectivity Technology	Bluetooth, USB, MP3, AUX-In
Tuner Technology	DAB, FM
Supported Radio Bands	FM, DAB, DAB+
Power Source	AC (Alternating Current)
Music Power Output	60 W
Special Features	Remote control, DOT matrix display, Alarm function, NFC
Compatible Devices	Laptop, Tablet, Smartphone
Total USB Ports	2 (1x USB MP3, 1x USB Charging 5V=1A)
Item Weight	3.27 Kilograms
Dimensions (L x W x H)	38 x 20.1 x 16.1 cm (approximate, derived from description)
Frequency	60 Hz (Power supply)

10. Warranty and Support

For warranty information and customer support, please refer to the documentation provided at the time of purchase or contact your retailer. Specific details regarding spare parts availability and software updates are not available in this manual. Please visit the official MUSE website or contact their customer service for the most current information.

	<p>Manuel d'utilisation MUSE M-1229 DAB : Autoradio Complet</p> <p>Guide complet pour l'autoradio MUSE M-1229 DAB. Découvrez l'installation, les fonctions audio, radio FM/DAB+, lecture CD/USB/Micro SD, Bluetooth et dépannage.</p>
	<p>MUSE M-695DBT Bluetooth Micro System User Manual</p> <p>Comprehensive user manual for the MUSE M-695DBT Bluetooth micro system, covering setup, operation, features like DAB+/FM radio, CD playback, USB, Bluetooth connectivity, and troubleshooting.</p>
	<p>Muse M-1380 DBT Bluetooth Speaker User Manual</p> <p>Comprehensive user manual for the Muse M-1380 DBT Bluetooth speaker, covering setup, operation, features like DAB+/FM radio, CD playback, USB, Bluetooth, NFC, and troubleshooting.</p>
	<p>Muse M-199 DAB - Manuel d'utilisation et guide d'installation</p> <p>Manuel d'utilisation complet pour l'autoradio Muse M-199 DAB, incluant les instructions d'installation, les fonctionnalités DAB+/FM, Bluetooth, USB/SD, et le dépannage.</p>

Documents - MUSE – M-785 DAB

[\[pdf\]](#) User Manual Instructions

MUSE M NL 785 DAB data vandenborre be manual



FR Manuel de l'utilisateur GB User Manual PT Manual do Utilizador DE Benutzerhandbuch ES Manual de instrucciones IT Manuale di istruzioni NL Handleiding LOCATION OF CONTROLS **M-785 DAB** REMOTE CONTROL FR Lire attentivement les instructions avant de faire fonctionner l'appareil. GB Please read the...

lang:fr score:26 filesize: 1.01 M page_count: 2 document date: 2017-12-12

[\[pdf\]](#)



M 785 DAB CS SP 3876DAB GB FR ai Aileen MUSE P NL data vandenborre be prodsheet

MM--1708158MDARBW ENCEINTE BLUETOOTH AVEC DAB/DAB , RADIO FM, CD ET PORT USB Compatible CD, CD-R/RW, MP3 Mcanisme CD tiroir Radio PLL FM-RDS/DAB/DAB NFC: Fonction de couplage automatique Puissance de sortie: 60W AFFICHAGE Affichage matriciel LCD points Intensit rglable Forte / Basse FONCTIONS...

lang:en score:21 filesize: 175.99 K page_count: 1 document date: 2018-01-18

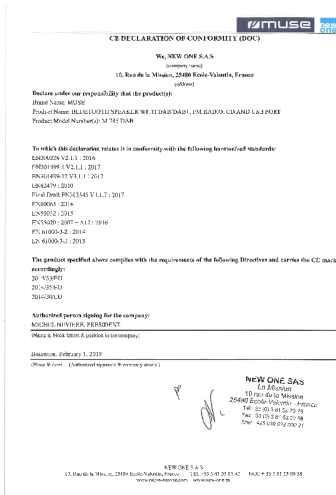
[pdf]



M 785 DAB CS SP 3876DAB GB FR DE ES ai ID Datenblatt MUSE DEES musepullzone 9a2b kxcdn 2018 04 |||

MM--1708158MDARBW BLUETOOTH-LAUTSPRECHER MIT DAB/DAB UKW RADIO, CD UND USB-PORT CD, CD-R/RW, MP3 kompatibel CD-Lade DAB/DAB /UKW-RDS PLL Radio NFC: Automatische Kopplung Ausgangsleistung: 60W DISPLAY Multifunktions-Dot-Matrix-LCD-Display Dimmer Hoch/Niedrig FUNKTIONEN Bluetooth V4.1, Musik-Strea...

lang:es score:20 filesize: 174.7 K page_count: 1 document date: 2018-04-11



[pdf] Declaration of Conformity

Certification M 785 DAB MUSE SP 3876 CE DOC 180516 musepullzone 9a2b kxcdn 2018 08 |||

lang:es score:16 filesize: 45.28 K page_count: 1 document date: 2018-05-15

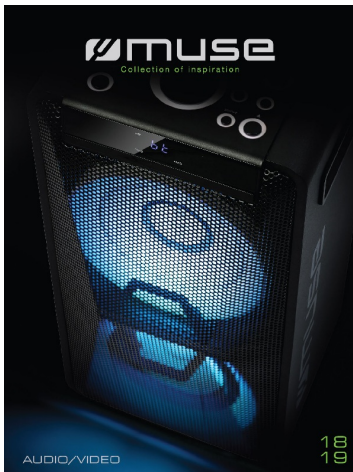


[pdf] User Manual Catalog

MUSE CATALOGUE 2017 REV7 IN CS6 indd Alice 8 9 M 175 CR 0 Large LED display with dimmer control high low off Dual alarm Wake to radio or buzzer Snooze sleep and nap functions Catalogue REV5 small muse europe 05 |||

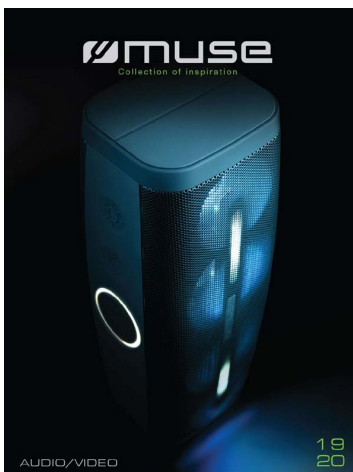
Collection of inspiration 2 CONTENTS AUDIO CLOCK RADIO DAB/DAB SERIES PORTABLE RADIO BOOMBOX CD ... operated: 230V - 50Hz Battery backup: 2x1.5V Type AAA/R03/UM4 not included 9 DAB/DAB SERIES M-785 DAB / M-1350 DAB Bluetooth, stream music from another bluetooth compatible device such as lap...

lang:en score:11 filesize: 7.4 M page_count: 35 document date: 2017-05-12



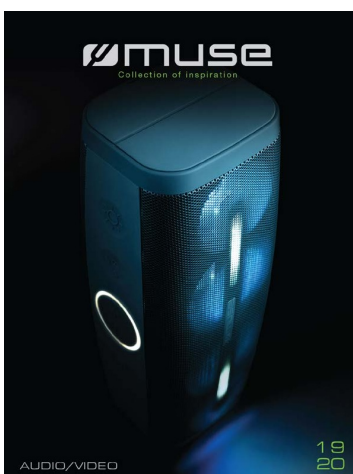
[\[pdf\]](#) User Manual Catalog

MUSE CATALOGUE 2018 REV4 indd Alice Built in USB charging port for smartphone or tablet
Synchronized display and projection Time with On Off switch musepullzone 9a2b kxcdn 05 |||
Collection of inspiration 2 CONTENTS AUDIO CLOCK RADIO DAB PORTABLE
RADIO BOOMBOX CD RADIO BLUE ... vided AC operated: 230V - 50Hz Battery
backup: 2x1.5V Type AAA/R03/UM4 not included 11 DAB **M-785 DAB** / M-1350 DAB
Bluetooth, stream music from another bluetooth compatible device such as lap...
lang:en score:10 filesize: 14.83 M page_count: 35 document date: 2018-04-27



[\[pdf\]](#) User Manual

Untitled Muse 2019 en sacom ch Bilder Kataloge |||
Collection of inspiration 2 CONTENTS AUDIO CLOCK RADIO PORTABLE RADIO
BOOMBOX CD RADIO BLUETOOTH ... LR STEREO PAIRING WHITE DIMMER
BASS TREBLE ADJUSTABLE 58 CD PLAYER SIDE VIEW PASSIVE BASS **M-785
DAB** BLUETOOTH MICRO SYSTEM WITH DAB /FM RADIO, CD AND USB PORT
Bluetooth, stream music from a...
lang:en score:9 filesize: 15.39 M page_count: 41 document date: 2019-06-27



[\[pdf\]](#) User Manual Catalog

Muse 2019 en Stream music from another Bluetooth compatible device such as laptop tablet or
smartphone NFC Auto pairing function Built in USB charging port for MUSE CATALOGUE musepullzone
9a2b kxcdn 04 |||
Collection of inspiration 2 CONTENTS AUDIO CLOCK RADIO PORTABLE RADIO
BOOMBOX CD RADIO BLUETOOTH ... LR STEREO PAIRING WHITE DIMMER
BASS TREBLE ADJUSTABLE 58 CD PLAYER SIDE VIEW PASSIVE BASS **M-785
DAB** BLUETOOTH MICRO SYSTEM WITH DAB /FM RADIO, CD AND USB PORT
Bluetooth, stream music from a...
lang:en score:9 filesize: 15.39 M page_count: 41 document date: 2019-04-04