

Manuals+

[Q & A](#) | [Deep Search](#) | [Upload](#)

manuals.plus /

- › [Edifier](#) /
- › [Edifier R1010BT Compact Bluetooth Bookshelf Speakers User Manual](#)

Edifier R1010BT Wood

Edifier R1010BT Compact Bluetooth Bookshelf Speakers User Manual

Model: R1010BT Wood | Brand: Edifier

1. INTRODUCTION

The Edifier R1010BT bookshelf speakers are designed to provide a high-quality audio experience with versatile connectivity options. These compact speakers offer convenient audio streaming from various devices and feature adjustable sound settings for a personalized listening experience.



Figure 1: Edifier R1010BT Compact Bluetooth Bookshelf Speakers, front view.

2. KEY FEATURES

- **Bluetooth Connectivity:** Enjoy comfortable audio streaming wirelessly from your smartphone, tablet, or other Bluetooth-enabled devices.
- **Versatile Inputs:** Dual RCA connectors and Bluetooth for maximum flexibility in connecting audio sources.
- **Customizable Sound:** Adjustable bass intensity and volume controls allow for a personalized listening experience tailored to your preferences.
- **Compact Design:** The space-saving design simplifies placement and integration into various environments.
- **Easy Setup:** Designed for straightforward installation and simple connection of audio sources.

3. PACKAGE CONTENTS

Please check the package carefully to ensure all components are present:

- Edifier R1010BT Speakers (1 pair)
- Speaker connection cable
- RCA to RCA audio cable
- Power cable
- User Manual (this document)

4. SETUP GUIDE

4.1 Speaker Placement

Place the speakers on a stable, flat surface such as a bookshelf, desk, or speaker stands. For optimal stereo imaging, position the speakers equidistant from your listening position and angle them slightly inwards (toe-in).



Figure 2: Example setup of Edifier R1010BT speakers with a laptop.

4.2 Connecting the Speakers

The R1010BT system consists of one active (main) speaker and one passive speaker. Connect the passive speaker to the active speaker using the provided speaker connection cable.



パーソナライズされたリスニング体験を実現するために、
この本棚型スピーカーの背面に低音と音量調整つまみがあります。
R1010BTにはデュアルステレオライン入力ポートもあり、
ポートaにはダイナミックな高音拡張機能があります。

Figure 3: Rear panel of the active speaker with input and control options.

1. Connect the speaker cable from the passive speaker to the corresponding terminals on the active speaker. Ensure correct polarity (+ to + and - to -).

2. Connect your audio source (e.g., TV, PC, CD player) to one of the RCA input ports (Line In A or Line In B) on the rear panel of the active speaker using the provided RCA cable.
3. Plug the power cable into the active speaker and then into a wall outlet.

5. OPERATING INSTRUCTIONS

5.1 Power On/Off

Locate the power switch on the rear panel of the active speaker. Flip the switch to the "On" position to power on the speakers. Flip to "Off" to power them down.

5.2 Volume and Input Control

The "Volume/Input" knob on the rear panel controls the overall volume. Rotate it clockwise to increase volume and counter-clockwise to decrease. Press the knob to cycle through the input sources (Line In A, Line In B, Bluetooth).

5.3 Bass Adjustment

Use the "Bass" knob on the rear panel to adjust the bass intensity to your preference. Rotate clockwise to increase bass and counter-clockwise to decrease.

5.4 Bluetooth Pairing

1. Ensure the speakers are powered on.
2. Press the "Volume/Input" knob until the Bluetooth input is selected (indicated by a blue LED).
3. On your Bluetooth device (smartphone, tablet, etc.), enable Bluetooth and search for "EDIFIER R1010BT".
4. Select "EDIFIER R1010BT" to pair. Once paired, the blue LED will stop flashing and remain solid.
5. You can now play audio from your device through the speakers.

Note: If pairing fails, try restarting the speakers and your Bluetooth device.

6. MAINTENANCE

To ensure the longevity and optimal performance of your Edifier R1010BT speakers, follow these maintenance guidelines:

- **Cleaning:** Use a soft, dry cloth to wipe the speaker cabinets. Do not use liquid cleaners or aerosol sprays, as they may damage the finish or internal components.
- **Dust:** Regularly dust the speaker grilles and surfaces to prevent accumulation.
- **Environment:** Avoid exposing the speakers to extreme temperatures, high humidity, direct sunlight, or strong vibrations.
- **Ventilation:** Ensure adequate airflow around the active speaker to prevent overheating. Do not block the ventilation ports.
- **Cables:** Periodically check all cables for any signs of damage or wear. Replace damaged cables immediately.

7. TROUBLESHOOTING

If you encounter any issues with your Edifier R1010BT speakers, please refer to the following common problems and solutions:

| Problem | Possible Cause | Solution |
|---------|----------------|----------|
|---------|----------------|----------|

| Problem | Possible Cause | Solution |
|-----------------------------|---|---|
| No sound | Power not connected or switched off. Incorrect input selected. Volume too low. Audio cable loose or damaged. Bluetooth not paired or source volume low. | Ensure power cable is securely connected and power switch is "On". Press "Volume/Input" knob to select correct input. Increase volume on speakers and audio source. Check and re-connect audio cables. Try a different cable. Re-pair Bluetooth. Increase volume on Bluetooth device. |
| Distorted sound | Volume too high. Audio source output level too high. Poor cable connection. | Decrease volume on speakers and audio source. Reduce output level from the audio source. Check and re-connect all audio cables. |
| Bluetooth connection issues | Device too far from speakers. Interference from other devices. Speakers already paired to another device. | Move Bluetooth device closer to speakers. Turn off other Bluetooth devices nearby. Disconnect from previous device or restart speakers to enter pairing mode. |

If the problem persists after trying these solutions, please contact Edifier customer support for further assistance.

8. SPECIFICATIONS

| | |
|--------------------------------------|--|
| Model Name | R1010BT |
| Item Model Number | R1010BT Wood |
| Brand | Edifier |
| Speaker Type | Bookshelf |
| Connectivity Technology | Bluetooth |
| Connections | Bluetooth, Dual RCA |
| Maximum Speaker Output Power | 24 Watts |
| Audio Output Mode | Stereo |
| Surround Sound Channel Configuration | 2.0 |
| Product Dimensions (L x W x H) | 17.8 x 24.1 x 24.1 cm (7 x 9.5 x 9.5 inches) |
| Item Weight | 2.4 Kilograms (5.3 lbs) |
| Material | MDF (Medium-Density Fibreboard) |

| | |
|---------------------|---|
| Color | Wood |
| Mounting Type | Table Mount |
| Compatible Devices | Smartphone, Tablet |
| Included Components | R1010BT Speakers |
| Special Features | Adjustable Bass, Volume Control, Bluetooth Indicator Lights |

9. WARRANTY AND SUPPORT

Edifier products come with a limited warranty. Please refer to the warranty card included in your package for specific terms and conditions. For technical support, troubleshooting assistance beyond this manual, or warranty claims, please contact Edifier customer service.

You can find more information and contact details on the official Edifier website or through their Amazon store page:

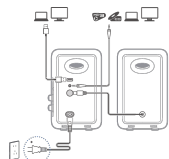
[Visit the Edifier Store on Amazon](#)

Related Documents - R1010BT Wood

| | |
|---|---|
|  | <p>Manuel d'Utilisation Gouges STRYI - Outils de Sculpture sur Bois</p> <p>Manuel d'utilisation détaillé pour les gouges STRYI, des outils professionnels de sculpture sur bois. Contient des instructions d'utilisation, des consignes de sécurité, des conseils d'entretien et des informations sur le produit et le fabricant.</p> |
|  | |

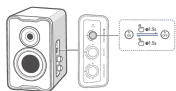
Note:
- Images are for illustrative purposes only and may differ from the actual product.
- The included USB connecting cables is for audio streaming only. Do not use it for device charging.
- For the latest technical improvement and system upgrade, information and specifications on our website may vary slightly different from actual product.
- If any difference is found, the actual product prevails.

3. Cable connection



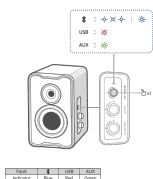
Note:
- Power input: 100-240V ~ 50/60Hz 35W.
- This unit is not a power supply for audio equipment only.
- When using the included USB cable, connect the USB connector near the bottom head to the USB port on the speaker.

4. Power on/off

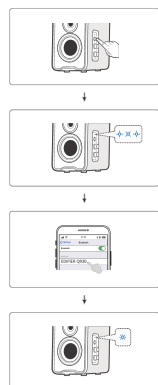


Press and hold the "G" button for 15 seconds to power on/off the product.

5. Source selection



6. Bluetooth connection



Note:
- The mode for connection is "BT" if needed.
- To enjoy all Bluetooth functions of the product, make sure that your audio source device supports A2DP and AVRCP profiles.
- If no device is connected in 10 minutes, the speaker will switch to Bluetooth Audio mode. The last connected device always in the mode. If no device is paired with the speaker, it will show that audio is the pairing mode of this speaker, you can select "QR30-QR30" from the Bluetooth device list to connect. To exit from Bluetooth Audio mode, press any button on the speaker.
- To disconnect from the current Bluetooth device, press and hold the "G" button for 15 seconds.

7. USB connection



Note:
The following operating systems support USB audio streaming: Windows 11, Windows 10, Windows 8, and Windows 7.

8. Play control



Note:
In AUX and USB mode, volume up is not supported. To adjust the volume, adjust on the speaker and your device separately.

9. Light effects



Note:
12 ambient light effects are optional. You can assign the "G" button on the speaker with 12 light effects on QR30 connect mode app on QR30R (optional) computer application.

10. Specifications

Total output power (RMS): 10W + 10W
Frequency response: 65Hz-20kHz
Distortion (at 10W):
Frequency Band: 2-4kHz: < 1%
100Hz-20kHz: < 1%
There is no restriction of use.

11. Troubleshooting

[Edifier QR30 Multimedia Speaker User Manual and Guide](#)

Comprehensive guide for the Edifier QR30 multimedia speaker, covering setup, Bluetooth and USB connectivity, app control, specifications, and troubleshooting. Learn how to connect and use your Edifier speakers effectively.

Connect correct to your Bluetooth device

- Make sure that the distance between this product and your Bluetooth device is less than 10 meters and there are no obstacles between them.
- Make sure that no device is connected to this product via Bluetooth.
- Make sure that the product is in Bluetooth pairing mode. First, manually switch it to this mode.
- Repeat this process, enable Bluetooth function on your Bluetooth device, and then try again.

No power

- Make sure that the power cable is properly connected.
- Make sure that the power supply is not disconnected.

No sound

- Make sure that this product is powered on.
- Make sure that this product and your device is properly connected.
- Make sure that the playback is not paused.
- Make sure that this product and your device are not muted.
- Increase the volume of this product and your device.

Noise coming from speakers

- Control speakers properly with note, under the background noise of some audio devices are too high. Please unplug audio cables and turn the volume on. If the speaker can be heard at all. Please away from the speaker. There is no problem with this product.

To learn more about EDIFIER, please visit www.edifier.com.

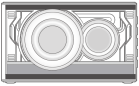
For EDIFIER warranty queries, please visit the relevant country page on www.edifier.com and select the country that you are in.

USA and Canada: sales@edifier.com

South America: Please visit www.edifier.com for local contact information.

EDIFIER®

QD25 Portable Bluetooth Speaker



— Manual —

EN 1. EDIFIER Connect mobile app

With this app, you can:

- control play/pause the Bluetooth source device
- control the speaker volume
- select sound effect or custom EQ
- aggregate the themes and more functions

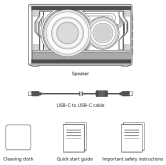
Download EDIFIER Connect app

- With your smart device, scan the QR code on the quick start guide or the packaging.
- You can also search for "EDIFIER Connect" in Apple App Store (iOS device) or Google Play (Android device).
- Download and install the app.

How to use this app

- Connect your smart device with the speaker via Bluetooth.
- In Bluetooth mode, open EDIFIER Connect App on your smart device.
- Tap the icons for settings and playback control.

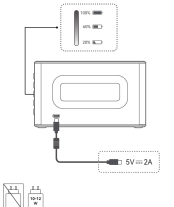
2. What's in the box?



Note

- Images are for illustration purpose only and may differ from the actual product.
- For the most of technical improvements and system upgrades, information and specifications contained herein may be slightly different from actual product. If any difference is found, the actual product prevails.

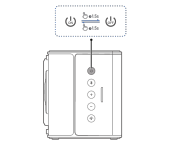
3. Charging



Note

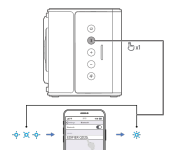
- Power input: 5V<2A
- "2A" is the maximum power required by the radio equipment to charge.
- "2A" is the maximum power required by the radio equipment to charge.
- Maximum charging speed.

4. Power on/off



When the speaker is not under charging, it will automatically power off if there are no radio playback and operation for 30 minutes. This function is enabled by default. You can disable it by the menu of "Settings" -> "Power saving mode" on EDIFIER Connect App.

5. Bluetooth connection



This speaker supports the simultaneous connection of two Bluetooth devices.

Connect to a device

- Press the "B" button to switch to Bluetooth pairing mode. If no device is connected, the speaker will enter Bluetooth pairing mode (LED blinking).
- On the smart device, search for "EDIFIER QD25" in the Bluetooth device list.
- On the smart device, select "EDIFIER QD25" in the Bluetooth device list to connect, and the device (ED) will be ready to be connected to the speaker.
- To disconnect from the current Bluetooth device, press and hold the "B" button for 5 seconds.

Connect to two devices

- Connect to a device, and then press and hold the "B" button for 1.5 seconds.
- On the second device, select "EDIFIER QD25" in the Bluetooth device list to connect, and the device (ED) will be ready to be connected to the speaker.
- On the first device, select "EDIFIER QD25" in the Bluetooth device list to reconnect. Please do not disconnect the current Bluetooth device before connecting with the second one.

Note

- The mode for connection is "A2DP" or "HFP".
- To enjoy all Bluetooth functions of the speaker, make sure that your audio source device supports A2DP and HFP profiles.

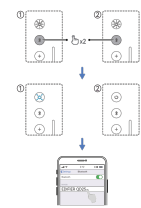
Edifier QD25 Portable Bluetooth Speaker User Manual

User manual for the Edifier QD25 portable Bluetooth speaker, detailing its features, setup,

• If no device is connected in 10 minutes, the speaker will switch to Bluetooth holder mode. The blue indicator will blink slowly. In this mode, if no device is connected, the speaker will enter a sleep mode. To wake up the speaker, you can press the "EDIFIER Q20T" button on the Bluetooth device for 5 seconds. To exit from Bluetooth holder mode, press the "EDIFIER" button on the speaker.

• After switched to Bluetooth mode, the speaker will reconnect to the last connected device automatically.

6. Bluetooth stereo pairing



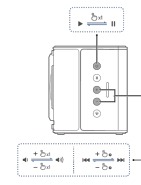
Pair two Q20T speakers to enjoy stereo sound.

1. Double press the "EDIFIER" button on the first Q20T. The white LED will be in breathing pattern.
2. Double press the "EDIFIER" button on the second Q20T. The white LED will be in breathing pattern.
3. Once the connection is established, the blue LED on the first Q20T will be steady to be in the left, and the white LED on the second Q20T will light up.
4. Connect the first Q20T to your Bluetooth device and start playing.
5. To exit the stereo mode, double press the "EDIFIER" button.

Note:

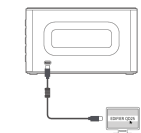
- The first Q20T will work as the master speaker. You can control play on the first Q20T.
- The first Q20T will deliver right channel audio and the second one is for the left channel audio.
- When two speakers are powered on again, they will connect automatically.

7. Play control



In USB audio streaming mode, remote turn is not supported. To adjust the volume, adjust on the speaker and your device separately.

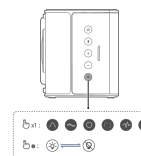
8. USB connection



Note:

The following operating systems support USB audio streaming: Windows 11, Windows 10, Windows 8, and Windows 7.

9. Light effects



Note:

You can customize light effects and turn on/off the lighting on EDIFIER Connect App.

10. Specifications

Total output power (RMS): 10 W (bass) + 10 W (treble)
Frequency response: 40 Hz-20 kHz
Distortion: less than 0.1%
Frequency Band: 2.402 GHz ~ 2.480 GHz
RF Power Output: <10 dBm (EN62368)
There is no restriction of use.

11. Troubleshooting

Connect to your Bluetooth device

- Make sure that the distance between the product and your Bluetooth device is less than 10 meters and there are no obstacles between them.
- Make sure that no device is connected to the product via Bluetooth.
- Make sure that this product is in Bluetooth pairing mode. If not, manually switch to this mode.
- Restart this product, enable Bluetooth function on your Bluetooth device, and then try again.
- Reset this product to factory settings and try again.

No sound

- Make sure that this product and your device is properly connected.
- Make sure that the correct audio input source is selected.
- Make sure that the playback is not paused.
- Increase the volume of this product and your device.

Reduce listening from speakers

- EDIFIER speakers generate little noise, while the background noise of some audio devices is too high. Please plug audio cable into your device and see if no sound can be heard at 1 meter away from the speaker. There is no problem with this product.

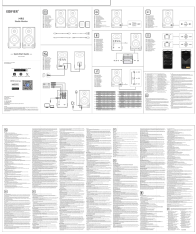
To learn more about EDIFIER, please visit www.edifier.com.
For EDIFIER warranty, please visit the related country page on www.edifier.com and review the section Global Warranty Terms.
S&A and Contact: sales@edifier.com
South America: Please visit www.edifier.com (English) or www.edifier.com (Spanish/Portuguese) for local contact information.

operation, connectivity options including Bluetooth and stereo pairing, app control via EDIFIER ConneX, specifications, and troubleshooting tips.

Edifier W600BT Bluetooth Stereo Headphones: User Manual and Operation Guide

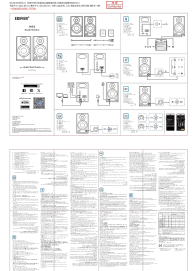
Explore the features and operational instructions for the Edifier W600BT Bluetooth Stereo Headphones. This guide covers button functions, Bluetooth pairing, and factory reset procedures.





[Edifier MR5 Studio Monitor Quick Start Guide](#)

A quick start guide for the Edifier MR5 Studio Monitor, covering setup, Bluetooth connectivity, acoustic tuning, and app integration.



[Edifier MR3 Studio Monitor User Manual](#)

Comprehensive user manual for the Edifier MR3 Studio Monitor speakers, covering setup, Bluetooth connectivity, sound adjustments, app control, safety guidelines, and regulatory compliance.