

## Lionel 685324

# Lionel Thomas & Friends Christmas Freight Electric O Gauge Bluetooth Train Set Instruction Manual

Model: 685324

## 1. INTRODUCTION

This manual provides essential information for the safe and proper operation of your Lionel Thomas & Friends Christmas Freight Electric O Gauge Bluetooth Train Set. This set features Thomas the Tank Engine, a gondola car, and a caboose, designed for an engaging model train experience. Please read all instructions carefully before assembly and operation.

## 2. SAFETY INFORMATION

**CHOKING HAZARD:** Small parts. Not for children under 3 years of age.

**CAUTION - ELECTRIC TOY:** Not recommended for children under eight years of age. As with all electric products, precautions should be observed during handling and use to prevent electric shock.

**WARNING:** This product can expose you to chemicals including lead, which is known in the State of California to cause cancer, birth defects, or other reproductive harm.

## 3. PACKAGE CONTENTS

Verify that all components listed below are present in your package:

- 1 x Thomas the Tank Engine
- 1 x Gondola Car with 3 Tree and 6 Present loads
- 1 x Caboose
- 8 x Curve O36 FasTrack sections
- 1 x Ten Inch Straight FasTrack section
- 1 x Ten Inch Straight FasTrack Terminal section
- 1 x Wall pack Power Supply
- 1 x LionChief Remote Control
- 3 x Interchangeable Thomas Faces
- 1 x Removable Christmas hat for Smokestack



Image: The product box displaying the included train components and track.

## 4. SETUP AND ASSEMBLY

Follow these steps to set up your train set:

1. **Track Assembly:** Connect the FasTrack sections by aligning and snapping them together. The FasTrack system features a snap-together locking mechanism for tight, reliable connections. The included track pieces create a 40-inch by 50-inch oval layout.
2. **Power Connection:** Connect the wall pack power supply to the FasTrack Terminal section.
3. **Place Train on Track:** Carefully place Thomas the Tank Engine and the freight cars onto the assembled track, ensuring all wheels are properly seated on the rails.
4. **Remote Control Batteries:** The remote control requires (3) AAA Alkaline Batteries for operation (not included). Insert them into the remote control.
5. **Attach Accessories:** Place the removable Christmas hat on Thomas's smokestack. Arrange the removable tree and present loads in the gondola car as desired.



*Image: The Thomas & Friends Christmas Freight train set fully assembled on an oval track, ready for operation.*

Your browser does not support the video tag.

*Video: An official Lionel LLC video showcasing the Thomas & Friends Christmas train set in operation, highlighting its features and ease of setup.*

## 5. OPERATING YOUR TRAIN SET

---

Your train set offers multiple ways to control Thomas:

- **LionChief Remote Control:** Use the included remote to control the electric locomotive. This remote allows for speed adjustments, direction changes, and sound activation.
- **Lionel LionChief App (Bluetooth):** Download the Lionel LionChief App on your compatible smart device. The Bluetooth functionality allows you to operate your train directly from your phone or tablet.
- **Lionel Voice Control (LVC):** When using the LionChief App, you can utilize Lionel Voice Control (LVC) to run your locomotive by speaking commands into your smart device.
- **RailSounds RC Sound System:** The train is equipped with a sound system that controls steam chuffing and background sounds, whistle, bell, and user-activated Thomas announcements. Use the remote or app to activate these features.
- **Interchangeable Faces:** Thomas comes with three interchangeable faces, allowing you to change his expression. Gently remove the current face and snap a new one into place.



*Image: A graphic illustrating the Lionel Voice Control (LVC), Bluetooth app control, and the three interchangeable faces for Thomas.*





Image: A detailed view of Thomas the Tank Engine's front, showcasing his smiling face and the removable Christmas hat.

## 6. MAINTENANCE AND CARE

To ensure the longevity and optimal performance of your train set, follow these maintenance guidelines:

- **Lubrication:** Lubricate wheels, axles, and linkage regularly to maintain smooth operation.
- **Cleaning:** Wipe the train and track with a soft cloth occasionally to clean off dust and debris.
- **Battery Storage:** Remove all batteries from the remote control when not in use for an extended period of time to prevent corrosion.
- **Storage:** Store the train set in a dry, cool place away from direct sunlight when not in use.

## 7. SPECIFICATIONS

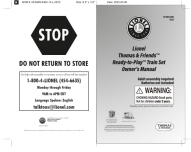
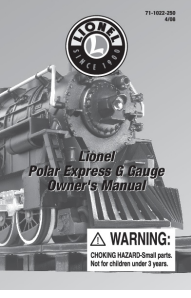

Feature	Detail
Rail Line	Mattel - Thomas
Gauge	O Gauge (approximately 1:48 scale)
Brand	Lionel
Power	Electric
Minimum Curve	O31
Train Length	21 inches
Product Dimensions	15.8 x 15.8 x 5 inches

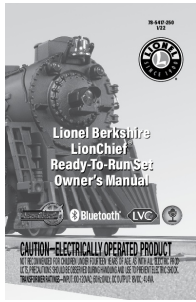
Feature	Detail
Item Weight	9.4 pounds
Model Number	685324
Recommended Age	8 years and up (Manufacturer recommended age: 14 years and up)
Batteries Required	3 AAA batteries for remote (not included)

## 8. WARRANTY AND SUPPORT

For warranty information or technical support, please contact Lionel LLC directly through their official website or customer service channels. Keep your proof of purchase for any warranty claims.

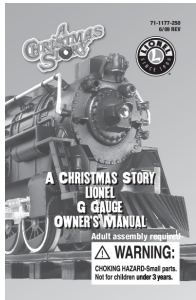
### Related Documents - 685324

	<p><a href="#">Lionel Thomas &amp; Friends Ready-to-Play Train Set Owner's Manual - Assembly, Operation, and Maintenance Guide</a></p> <p>Comprehensive owner's manual for the Lionel Thomas &amp; Friends Ready-to-Play Train Set. Includes instructions for track assembly, battery installation, operating the train, maintenance, and troubleshooting. Features detailed descriptions of components and functions.</p>
	<p><a href="#">Lionel Polar Express G Gauge Owner's Manual</a></p> <p>Comprehensive owner's manual for the Lionel Polar Express G Gauge train set, covering setup, operation, maintenance, and troubleshooting. Includes inventory, FCC statement, and warranty information.</p>
	<p><a href="#">Lionel Chessie System Merger Special Freight Set Owner's Manual</a></p> <p>Comprehensive owner's manual for the Lionel Chessie System Merger Special Freight Set Ready-to-Run Set, covering setup, operation, maintenance, and warranty information for the CW-80 Transformer and FasTrack system.</p>



Lionel Berkshire LionChief Ready-To-Run Set Owner's Manual

Comprehensive guide to setting up, operating, and maintaining the Lionel Berkshire LionChief Ready-To-Run O Gauge train set, including remote control and app usage, troubleshooting, and warranty information.



# A Christmas Story Lionel G Gauge Owner's Manual

Owner's manual for the A Christmas Story Lionel G Gauge train set, providing instructions on assembly, operation, maintenance, and troubleshooting.



[Lionel North Pole Central Lines Ready-to-Play Train Set \(7-11729\) - User Manual and Product Information](#)

User guide for the Lionel North Pole Central Lines Ready-to-Play battery-powered train set (model 7-11729). Includes features, set contents, track layout, battery requirements, safety warnings, FCC compliance, and warranty information.