

## Enbrighten 39971

# Enbrighten Direct Wire Converter

Model: 39971

[Introduction](#)   [Safety Information](#)   [Package Contents](#)   [Setup &](#)  
[Installation](#)   [Operation](#)   [Maintenance](#)   [Troubleshooting](#)   [Specifications](#)   [Warranty & Support](#)

## 1. INTRODUCTION

The Enbrighten Direct Wire Converter (Model 39971) is designed to integrate Enbrighten plug-in, linkable light fixtures into an existing electrical circuit. This allows for control of multiple linked lights from a single wall switch, eliminating visible power cords and freeing up electrical outlets. This manual provides essential information for safe installation, operation, and maintenance of your direct wire converter.



Image: Enbrighten Direct Wire Converter, Model 39971. This image shows the overall appearance of the white rectangular converter box.

## 2. IMPORTANT SAFETY INFORMATION

---

**WARNING: RISK OF ELECTRIC SHOCK. INSTALLATION SHOULD BE PERFORMED BY A QUALIFIED ELECTRICIAN OR LICENSED PROFESSIONAL. ALWAYS TURN OFF POWER AT THE CIRCUIT BREAKER BEFORE INSTALLATION.**

- Read all instructions before installation and use.
- This product is intended for indoor use only.
- Ensure the power supply is disconnected at the circuit breaker or fuse box before beginning any electrical work.
- Verify that the voltage of your electrical supply matches the product's specifications (120V AC).
- Do not exceed the maximum electrical rating of 250V, max 10A.
- Suitable for dry or damp locations. Do not install in locations exposed to direct water spray or submersion.
- Do not connect or disconnect under load (i.e., with power on).
- All wiring must conform to national and local electrical codes. If you are unsure about wiring, consult a qualified electrician.
- Use only with compatible Enbrighten linkable puck and bar fixtures.

## 3. PACKAGE CONTENTS

---

Carefully unpack the box and ensure all items are present and undamaged. If any parts are missing or damaged, contact customer support before proceeding with installation.

- Enbrighten Direct Wire Converter (1 unit)
- Mounting Screws
- Wire Connectors (Wire Nuts)
- Strain Relief Connector



Image: Front packaging of the Enbrighten Direct Wire Converter. This image illustrates the product and its primary function of converting plug-in fixtures to direct wire.

## 4. SETUP & INSTALLATION

This section outlines the steps for installing the Enbrighten Direct Wire Converter. Ensure all safety precautions are followed.

### Tools Needed (Not Included):

- Phillips Head Screwdriver
- Wire Strippers



- Drill with 1/16" or 3/32" drill bit (for mounting)
- Safety Glasses

39971

**Linkable lights use one plug, but each light needs to be turned on independently**

Las luces enlazables utilizan un solo enchufe, pero cada luz debe encenderse de forma independiente



**Direct Wire Converter eliminates cord clutter and allows you to control all lights from one switch**

El convertor a conexión directa elimina el desorden de los cables y le permite controlar todas las luces desde un único interruptor



Works with GE-branded linkable puck & bar light fixtures

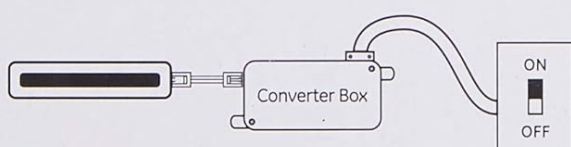
Funciona con las luces táctiles enlazables y los accesorios de luz tipo barra de marca GE



Required to wire GE-branded linkable fixtures into an existing circuit for control from a wall switch.

Requerido para conectar accesorios enlazables de marca GE a un circuito existente a fin de controlarlos desde un interruptor de pared.

#### Easy installation | Instalación sencilla



One wiring kit allows you to hardwire multiple fixtures  
Un kit de cableado le permite conectar múltiples accesorios

#### Tools needed | Herramientas necesarias:



Includes all hardware necessary for direct wiring  
Incluye todas las herramientas necesarias para realizar un cableado directo

Image: Back packaging of the Enbrighten Direct Wire Converter. This image displays the 'Tools needed' section and a simplified wiring diagram for installation.

### Installation Steps:

1. **Turn Off Power:** Locate the circuit breaker controlling the area where you will install the converter and turn off the power. Verify power is off using a voltage tester.
2. **Prepare Mounting Location:** Choose a suitable, dry location for the converter box, typically inside a cabinet or under a counter, close to the intended light fixtures.
3. **Mount the Converter Box:** Use the provided mounting screws to securely attach the converter box to the desired surface. Pre-drill pilot holes if necessary.
4. **Prepare Wiring:**
  - Carefully remove a knockout from the converter box for your incoming electrical supply wire.

- Insert the electrical supply wire (e.g., Romex) through the knockout and secure it with the provided strain relief connector.
- Strip approximately 1/2 inch of insulation from the ends of the supply wires (black, white, and bare copper/green ground).

#### 5. Wire Connections:

- Connect the **black (hot)** wire from your electrical supply to the **black wire** inside the converter box using a wire connector.
- Connect the **white (neutral)** wire from your electrical supply to the **white wire** inside the converter box using a wire connector.
- Connect the **bare copper or green (ground)** wire from your electrical supply to the **green wire** inside the converter box using a wire connector.
- Ensure all connections are secure and no bare wire is exposed outside the wire connectors.

6. **Connect to Light Fixtures:** The converter box has output ports designed for Enbrighten linkable light fixtures. Plug the linking cables from your Enbrighten light fixtures directly into these ports. Ensure a secure connection.

7. **Close the Box:** Carefully tuck all wires into the converter box and secure the cover with the screws.

8. **Restore Power:** Turn the power back on at the circuit breaker.

9. **Test:** Operate your wall switch to confirm that the connected Enbrighten light fixtures turn on and off correctly.



Image: Front view of the Enbrighten Direct Wire Converter. This shows the input and output ports for connecting to electrical wiring and linkable fixtures.

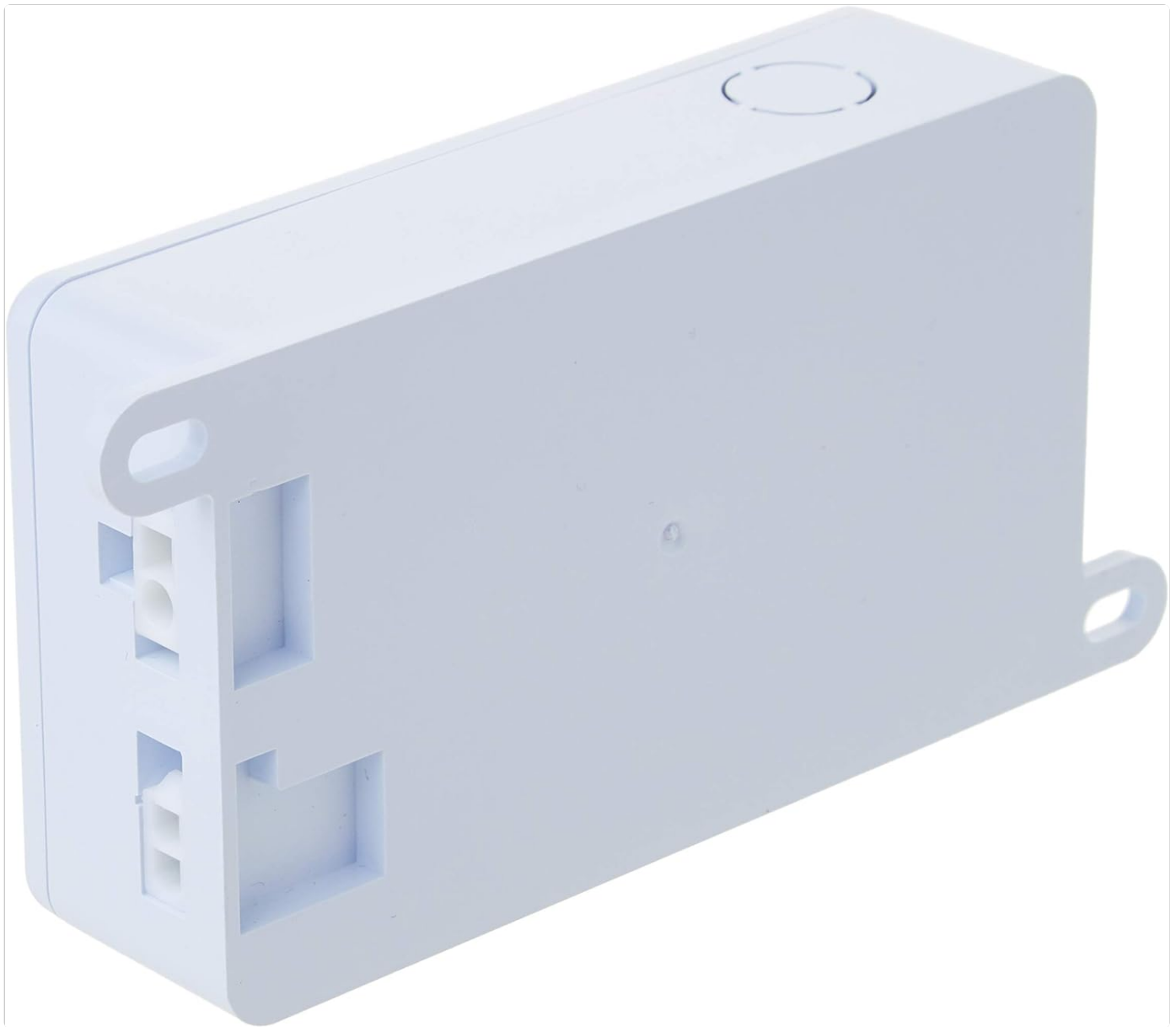


Image: Side view of the Enbrighten Direct Wire Converter. This angle highlights the compact design and mounting tabs.

## 5. OPERATION

---

Once properly installed, the Enbrighten Direct Wire Converter allows you to control all connected Enbrighten linkable light fixtures from a single wall switch. Simply toggle the wall switch to turn the lights ON or OFF.

The converter itself does not have any user-operable controls. Its function is to provide a hardwired power source for your linkable lighting system.

## 6. MAINTENANCE

---

The Enbrighten Direct Wire Converter requires minimal maintenance.

- **Cleaning:** Ensure power is off at the circuit breaker before cleaning. Wipe the exterior of the converter box with a soft, dry cloth. Do not use abrasive cleaners or solvents.
- **Inspection:** Periodically inspect the converter and its connections for any signs of damage, loose wires, or overheating. If any issues are found, turn off power immediately and consult a qualified electrician.
- **No User-Serviceable Parts:** The converter contains no user-serviceable parts. Do not attempt to open or repair the unit.

## 7. TROUBLESHOOTING

---

If you experience issues with your Enbrighten Direct Wire Converter, refer to the following common problems and solutions:

Problem	Possible Cause	Solution
Lights do not turn on.	No power to the converter.	Check the circuit breaker and ensure it is ON. Verify all wire connections are secure.
Lights flicker or are dim.	Loose wire connection or incompatible fixtures.	Turn off power and check all wire connections. Ensure you are using compatible Enbrighten linkable fixtures.
Converter box feels warm.	Normal operation or overloaded circuit.	A slight warmth is normal. If it feels excessively hot, turn off power immediately and consult an electrician. Ensure the total wattage of connected lights does not exceed the converter's rating.
Only some lights turn on.	Loose connection between light fixtures.	Turn off power and check the linking cable connections between the light fixtures and to the converter.

If troubleshooting steps do not resolve the issue, contact customer support or a qualified electrician.

## 8. SPECIFICATIONS

---

- **Model Number:** 39971
- **Voltage:** 120 Volts (AC)
- **Maximum Current:** 10 Amps
- **Maximum Compatible Light Source Wattage:** 4.5 Watts (per fixture, ensure total does not exceed 10A circuit capacity)
- **Material:** Plastic
- **Color:** White
- **Product Dimensions:** 1.15"L x 2.4"W x 4.96"H
- **Mounting Type:** Screw On
- **Compatibility:** Enbrighten linkable puck and bar fixtures
- **Certifications:** UL Listed (E218874)





Image: Close-up of the product label on the Enbrighten Direct Wire Converter. This label provides UL listing information, electrical ratings, and contact details.

## 9. WARRANTY & SUPPORT

This Enbrighten product comes with a limited-lifetime warranty, ensuring reliability for years to come. For detailed warranty information, please visit the manufacturer's website or refer to the product packaging.

For technical support, questions, or warranty claims, please contact Jasco Products Company, LLC, the manufacturer of Enbrighten products.

- **Manufacturer:** Jasco Products Company, LLC
- **Website:** [www.byjasco.com](http://www.byjasco.com)
- **Customer Service Phone:** 1-800-654-8483 (7:00 AM – 8:00 PM CST)