

ROBOTIME AM403

ROBOTIME AM403 DIY Music Box The Universe Instruction Manual

Model: AM403 | Brand: ROBOTIME

1. PRODUCT OVERVIEW

The ROBOTIME AM403 DIY Music Box, themed 'The Universe', is a wooden craft kit designed for assembly. This kit includes 117 laser-cut wood pieces and all necessary tools for construction. Once assembled, the music box plays the tune 'Moonlight Sonata' using an eighteen-tone serinette movement. It features a bidirectional counter-rotating movement and vertical roller movement, creating a dynamic display. The steel components, imported from Japan, contribute to a louder and clearer tone. The assembled dimensions are approximately 78 x 78 x 197 mm.

- Laser-cut pieces for precise detail and realistic scenarios.
- Eighteen-tone serinette movement for musical playback.
- Plays the tune: Moonlight Sonata.
- Japanese imported steel for enhanced sound clarity and volume.
- Comprises 117 individual wood pieces for assembly.



Image 1.1: The fully assembled ROBOTIME AM403 DIY Music Box, showcasing its intricate design and vibrant colors, placed on a wooden surface.



Image 1.2: The assembled music box with indicated dimensions: 205mm width, 330mm depth, and 270mm height, providing a clear understanding of its size.

2. SETUP AND ASSEMBLY

This product is a DIY kit requiring assembly. Please follow the included English instruction manual carefully. It is recommended to work on a clean, flat surface and to keep all small parts organized during the assembly process.

2.1 Unboxing and Part Identification

1. Carefully open the product packaging.
2. Remove all wooden sheets and accessory bags.

3. Verify that all 117 wood pieces and other components (music movement, tools) are present by comparing them with the parts list in the included manual.
4. Familiarize yourself with the shapes and numbers of the laser-cut pieces.



Image 2.1: The product packaging for the ROBOTIME AM403 DIY Music Box, showing the kit contents and branding.

2.2 Assembly Steps

Refer to the detailed step-by-step instructions provided in the physical manual included with your kit. General guidelines include:

- Gently detach wood pieces from their sheets. Avoid forcing them to prevent breakage.
- Use the provided tools for precise fitting and to remove any small burrs if necessary.
- Follow the numerical or alphabetical sequence for assembly as indicated in the manual.
- Ensure all connections are secure but do not apply excessive force.
- Install the music movement mechanism according to the manual's diagrams, ensuring it is correctly oriented for winding and sound production.

3. OPERATING INSTRUCTIONS

Once assembled, the ROBOTIME AM403 Music Box is ready for operation. It functions as a wind-up music box with dynamic movement.

3.1 Winding the Music Box

1. Locate the winding key on the side or bottom of the music box.
2. Gently turn the key clockwise until you feel a slight resistance. Do not overwind, as this can damage the mechanism.
3. Release the key, and the music box will begin to play 'Moonlight Sonata' and initiate its rotational

movements.

3.2 Observing Movement

The music box features bidirectional counter-rotating movement and vertical roller movement. Observe the various elements of 'The Universe' theme as they rotate and move while the music plays.

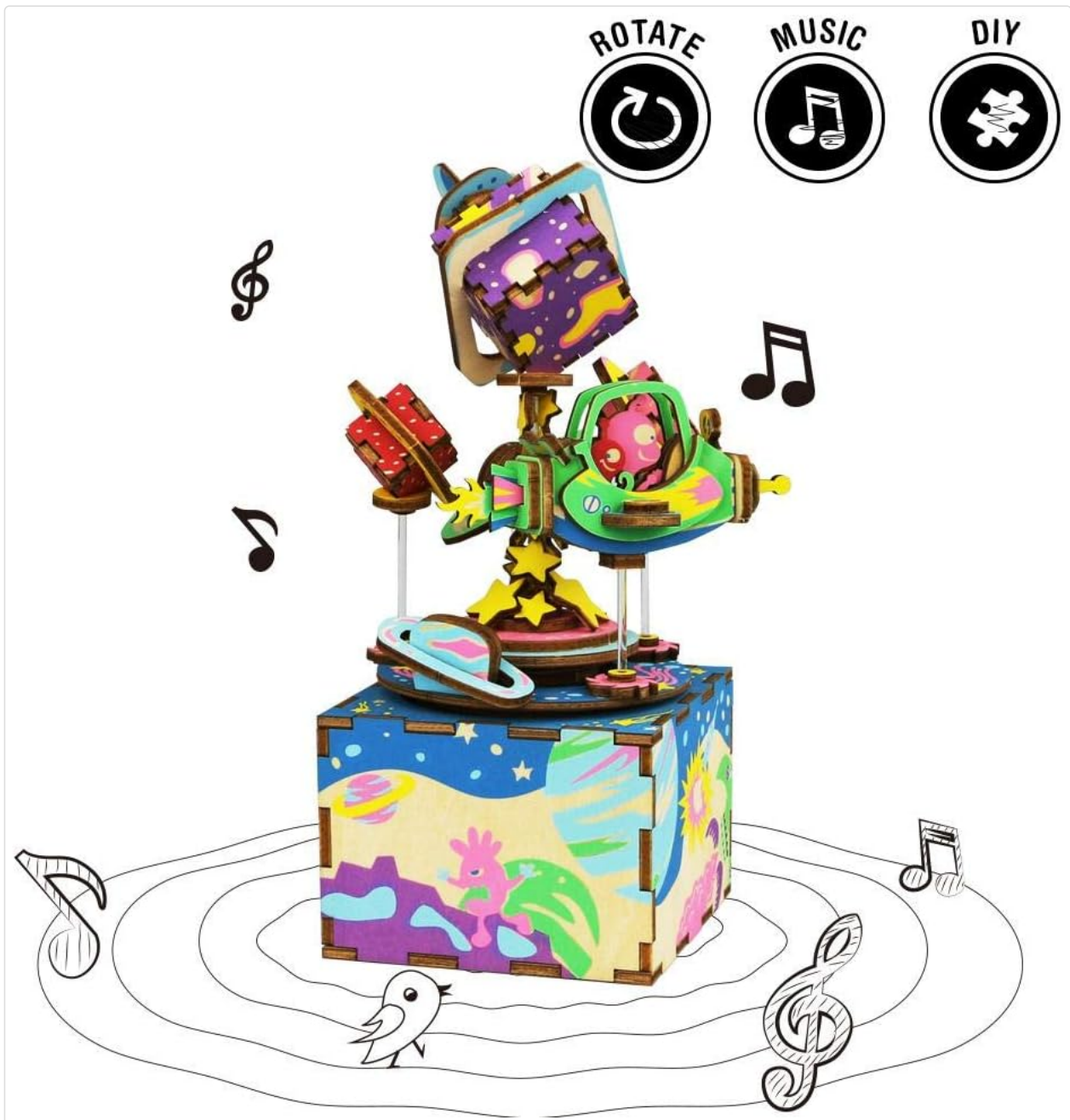


Image 3.1: The music box in operation, highlighting its rotating elements and musical function, along with icons indicating its 'Rotate', 'Music', and 'DIY' features.

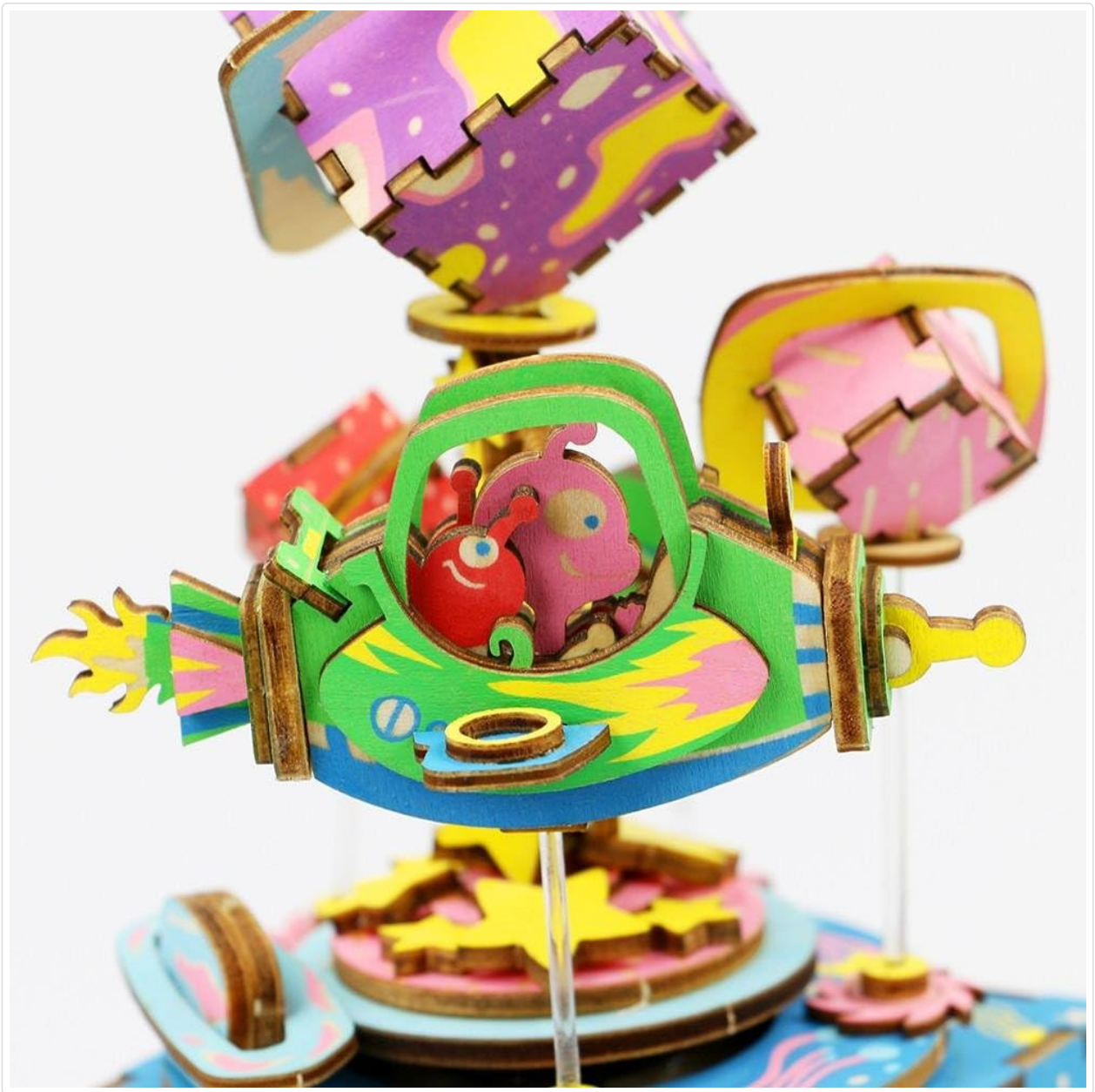


Image 3.2: A close-up view of the intricate figures and details within the music box's universe theme, showing the craftsmanship of the laser-cut pieces.

4. MAINTENANCE

Proper care will ensure the longevity and optimal performance of your ROBOTIME AM403 Music Box.

- **Cleaning:** Use a soft, dry cloth to gently wipe dust from the wooden surfaces. Avoid using abrasive cleaners or excessive moisture, which can damage the wood and internal mechanism.
- **Storage:** Store the music box in a dry environment, away from direct sunlight and extreme temperature fluctuations. High humidity can cause the wood to warp or swell.
- **Handling:** Handle the music box with care. Avoid dropping it or subjecting it to strong impacts, which can dislodge or break delicate wooden pieces and affect the music mechanism.
- **Winding:** Always wind the music box gently and avoid overwinding to prevent damage to the internal spring mechanism.

5. TROUBLESHOOTING

If you encounter any issues with your music box, refer to the following common troubleshooting steps:

- **Music not playing:**

- Ensure the music box is fully wound (without overwinding).
- Check if any internal components are obstructing the music mechanism.

- **Parts not fitting during assembly:**

- Verify that you are using the correct pieces as indicated in the manual.
- Gently sand any edges with fine-grit sandpaper if a piece is too tight, but only if absolutely necessary and with caution.
- Ensure pieces are oriented correctly before attempting to join them.

- **Rotational movement is stiff or uneven:**

- Check for any misaligned or rubbing parts.
- Ensure all connecting pins and gears are properly seated and not obstructed.

6. PRODUCT SPECIFICATIONS

Specification	Detail
Brand	ROBOTIME
Model Number	AM403
Item Type Name	DIY Music Box
Theme	Music, The Universe
Material	Wood
Colour	Multicolor
Number of Wood Pieces	117
Tune	Moonlight Sonata
Assembled Item Dimensions (L x W x H)	7.8 x 7.8 x 19.7 centimetres (approx. 78 x 78 x 197 mm)
Item Weight	1.01 Pounds
Age Range (Description)	Unisex Adults/Children (Manufacturer Minimum Age: 14 months, Maximum Age: 18 years)
Educational Objective	Concentration Skill
Included Components	1 x Music Box Kit (unassembled)

7. WARRANTY AND SUPPORT

For specific warranty information, please refer to the documentation included with your product or contact ROBOTIME customer support directly. If you have any questions regarding assembly, missing parts, or product functionality, please reach out to the manufacturer's support channels for assistance.

Manufacturer: Robotime

Contact information can typically be found on the product packaging or the official ROBOTIME website.