

## Wera 05075611001

# Wera Click-Torque B 2 Torque Wrench (20-100 Nm) User Manual

Model: 05075611001

## 1. INTRODUCTION

This manual provides essential information for the safe and effective use of your Wera Click-Torque B 2 Torque Wrench. The Wera Click-Torque B 2 is a robust torque wrench designed for high accuracy, conforming to DIN EN ISO 6789-1: 2017-07 standards. It features an easy-to-use setting mechanism with audible and tactile clicks to confirm the desired torque value. This tool is suitable for right-hand (clockwise) torque control and incorporates a 45-tooth reversible ratchet mechanism.



Figure 1: Wera Click-Torque B 2 Torque Wrench, showing its main body and reversible ratchet head.

## 2. SAFETY INFORMATION

Always observe the following safety precautions when using the torque wrench:

- Read and understand this manual completely before operation.
- Wear appropriate personal protective equipment, such as safety glasses.
- Ensure the workpiece is securely fastened before applying torque.
- Do not exceed the maximum torque capacity of the wrench (100 Nm).
- Do not use the torque wrench as a breaker bar or for loosening fasteners.
- Keep the tool clean and free from oil or grease to maintain a secure grip.
- Store the torque wrench at its lowest torque setting (20 Nm) when not in use to relieve spring tension and maintain accuracy.

### 3. PRODUCT COMPONENTS

The Wera Click-Torque B 2 wrench consists of the following key parts:

- **Reversible Ratchet Head:** For attaching sockets and driving fasteners.
- **Torque Scale:** Displays the set torque value in Newton-meters (Nm) and pound-feet (lbf-ft).
- **Adjustment Ring:** Used to set the desired torque value.
- **Locking Mechanism:** Secures the set torque value to prevent accidental changes.
- **Handle:** Ergonomically designed for comfortable grip and application of force.

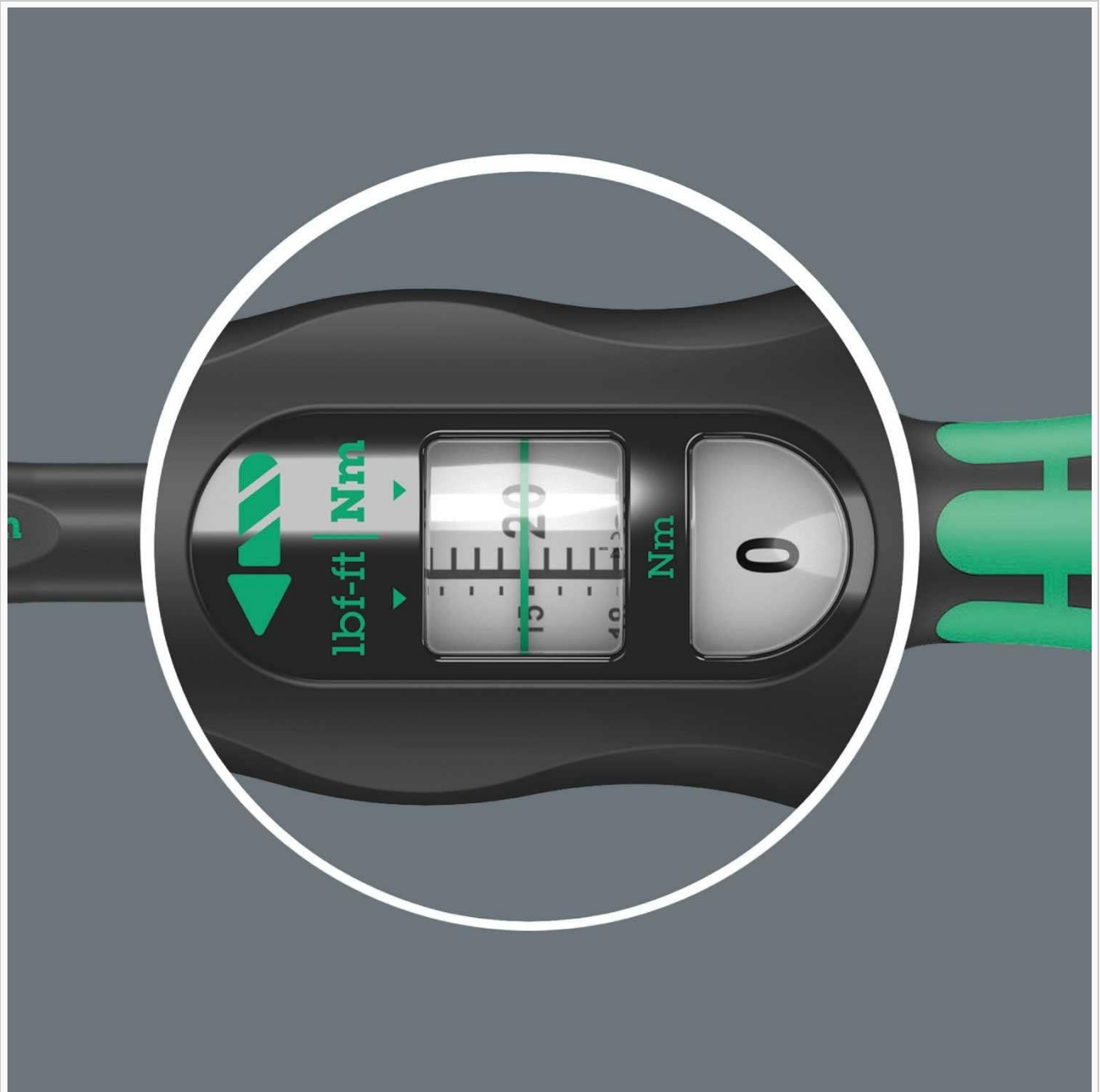


Figure 2: Detailed view of the torque scale, showing both Nm and lbf-ft units for precise setting.

### 4. SETUP AND TORQUE SETTING

Follow these steps to set the desired torque value:

1. **Unlock the Adjustment:** Pull the green adjustment ring at the end of the handle downwards to unlock the setting mechanism.
2. **Set Torque Value:** Rotate the handle clockwise or counter-clockwise until the desired torque value aligns with the main scale. The scale provides clear markings in Nm and lbf-ft. You will feel and hear distinct clicks as you adjust the value.
3. **Lock the Adjustment:** Release the adjustment ring. It will spring back into place, locking the set torque value. Ensure it is fully engaged before use.



Figure 3: A hand demonstrating the adjustment of the torque setting on the wrench handle.

## 5. OPERATING INSTRUCTIONS

Using your Wera Click-Torque B 2 wrench:

1. **Attach Socket:** Select the appropriate 3/8-inch drive socket and firmly attach it to the square drive of the ratchet head.

2. **Select Ratchet Direction:** Use the switch on the ratchet head to select the desired direction (clockwise for tightening, counter-clockwise for loosening, though torque wrenches are primarily for tightening).
3. **Apply Torque:** Place the socket onto the fastener. Apply steady, smooth force to the handle in a clockwise direction. Continue applying force until you hear and feel a distinct "click" from the wrench. This indicates that the preset torque value has been reached.
4. **Stop Application:** Immediately stop applying force once the click is felt and heard. Do not continue to turn the wrench beyond the click, as this will over-torque the fastener.

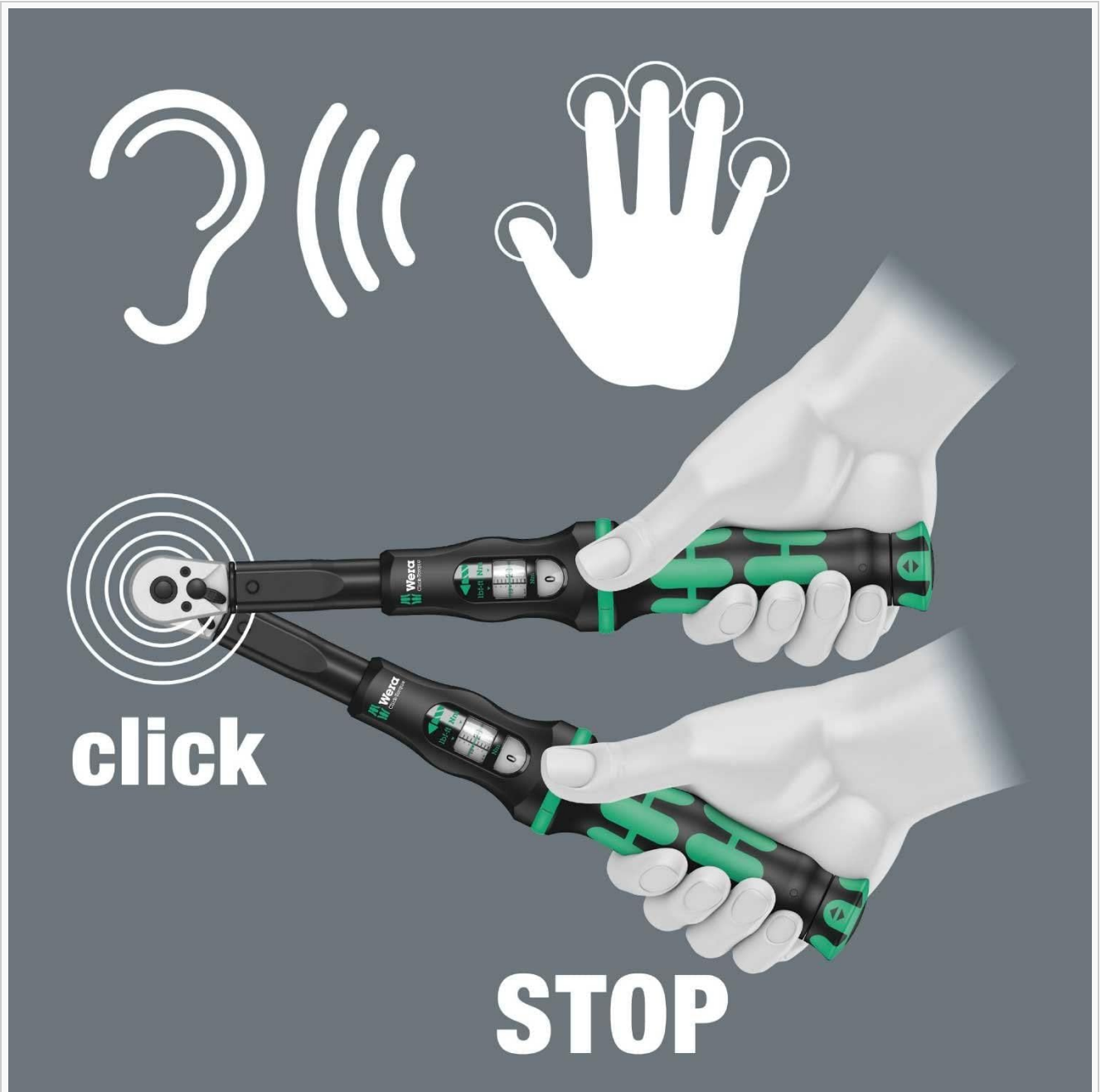


Figure 4: Visual representation of the audible and tactile 'click' feedback upon reaching the set torque.

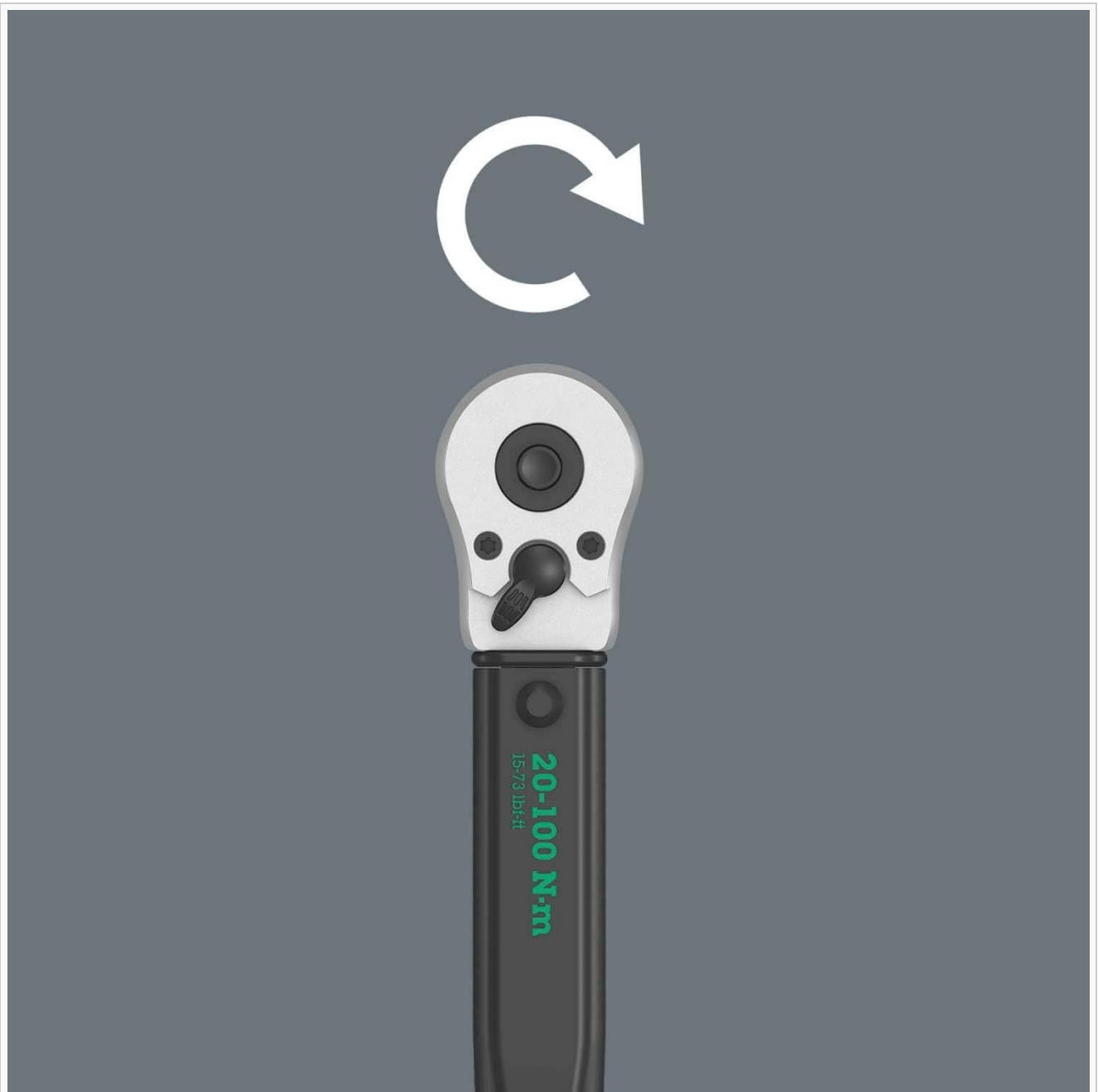


Figure 5: Close-up of the reversible ratchet head, highlighting the direction switch.

## 6. CARE AND MAINTENANCE

Proper care ensures the longevity and accuracy of your torque wrench:

- **Cleaning:** Wipe the wrench clean with a soft, dry cloth after each use. Do not use harsh chemicals or solvents that could damage the finish or internal components.
- **Storage:** Always reset the torque wrench to its lowest setting (20 Nm) before storing. This relieves tension on the internal spring, preserving its calibration. Store in a dry, clean environment, preferably in its original case.
- **Calibration:** Torque wrenches are precision instruments and require periodic calibration to maintain accuracy. Wera recommends professional calibration at regular intervals, typically annually or after 5,000 cycles, whichever comes first.
- **Avoid Dropping:** Dropping the torque wrench can severely affect its calibration and internal mechanisms. Handle with care.

## 7. TROUBLESHOOTING

If you encounter issues with your torque wrench, consider the following:

- **Wrench Not Clicking:**
  - Ensure the torque setting is correctly locked.
  - Verify that the applied torque is within the wrench's operational range (20-100 Nm).
  - Apply force smoothly and steadily; a sudden jerk might prevent a clear click.
- **Inaccurate Readings:**
  - Check if the wrench has been dropped or subjected to impact.
  - Ensure the wrench was stored at its lowest setting.
  - Consider professional recalibration if accuracy is consistently off.
- **Difficulty Adjusting Torque:**
  - Ensure the adjustment ring is fully pulled down to unlock the mechanism.
  - Clean any debris or grime from the adjustment mechanism.

For persistent issues, contact Wera customer support or an authorized service center.

## 8. TECHNICAL SPECIFICATIONS

Feature	Specification
Model Number	05075611001
Torque Range	20 - 100 Nm
Drive Size	3/8 inch
Accuracy	± 3% (conforms to DIN EN ISO 6789-1:2017-07)
Ratchet Mechanism	45-tooth, reversible
Operation Mode	Mechanical
Length	44.5 Centimeters
Weight	2.69 Pounds
Material	Blend
Head Style	Fixed Square
GTIN	04013288193209



±3%

DIN EN ISO 6789-1:2017-07

Figure 6: The wrench's accuracy rating of ±3% as per DIN EN ISO 6789-1:2017-07.

## 9. WARRANTY INFORMATION

This Wera product is covered by the standard manufacturer's warranty. For specific details regarding warranty terms, conditions, and duration, please refer to the official Wera website or contact their customer service directly. Keep your proof of purchase for warranty claims.

## 10. CUSTOMER SUPPORT

For technical assistance, spare parts, or service inquiries, please visit the official Wera website or contact their customer support:

- **Wera Official Website:** [www.wera.de/en/](http://www.wera.de/en/)
- Refer to the website for regional contact information and service centers.

