

[manuals.plus](#) /

› [MEE audio](#) /

› [MEE audio M6 PRO 2nd Gen In-Ear Monitor Headphones Instruction Manual](#)

MEE audio M6 PRO

MEE audio M6 PRO 2nd Gen In-Ear Monitor Headphones Instruction Manual

Model: M6 PRO (EP-M6PROG2-BK)

INTRODUCTION

The MEE audio M6 PRO 2nd Generation In-Ear Monitor Headphones are engineered for musicians, delivering clear, full-range audio with precise movement and accurate mids. Featuring a 5um driver diaphragm and aluminum voice coil, these monitors provide enhanced sound quality. The sound-isolating design, coupled with various eartips, reduces ambient noise for safer listening volumes and an improved audio experience.



Image: MEE audio M6 PRO headphones, highlighting their design for stage and road use.

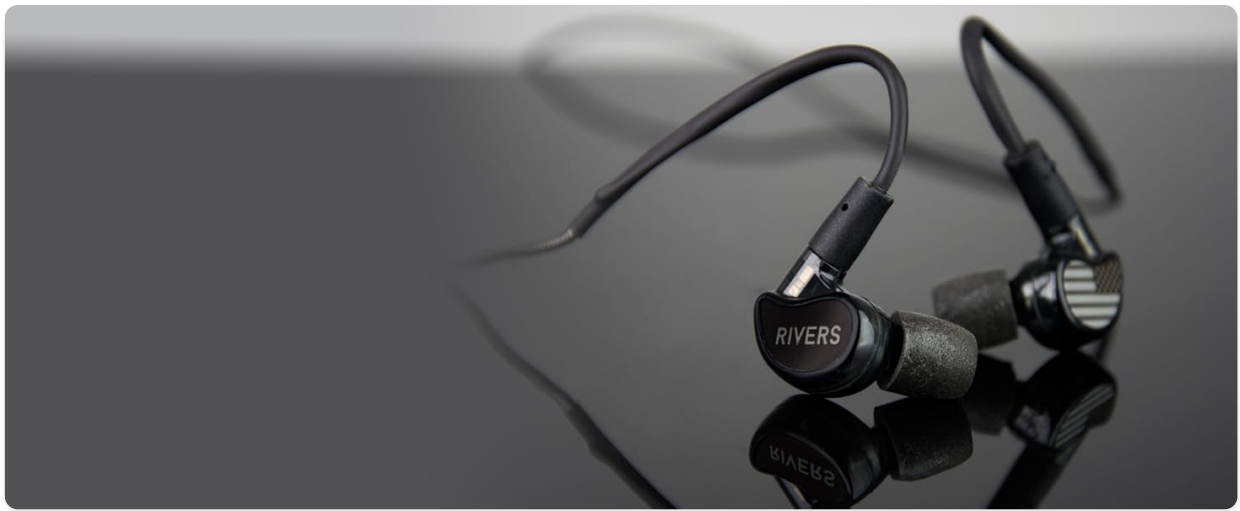


Image: Close-up view of the M6 PRO earbud, emphasizing its superior sound capabilities.

Official Product Video: Introduction to MEE audio M6 PRO

Your browser does not support the video tag.

Video: An introductory overview of the MEE audio M6 PRO In Ear Monitors, showcasing their features and design.

PACKAGE CONTENTS

Your MEE audio M6 PRO package includes the following items:

- M6 PRO In-Ear Monitors
- Regular stereo audio cable
- Headset cable with microphone and remote for mobile devices
- Protective carrying case
- Comply™ T-Series memory foam eartips (1 pair)
- Silicone eartips (6 pairs)
- 1/4" (6.3mm) adapter

COMPLETE KIT

Includes regular stereo cable, headset cable with mic/remote, protective carrying case, Comply™ memory foam eartips, 6 sets of silicone eartips, and 1/4" adapter



Image: A complete view of all items included in the MEE audio M6 PRO retail package.

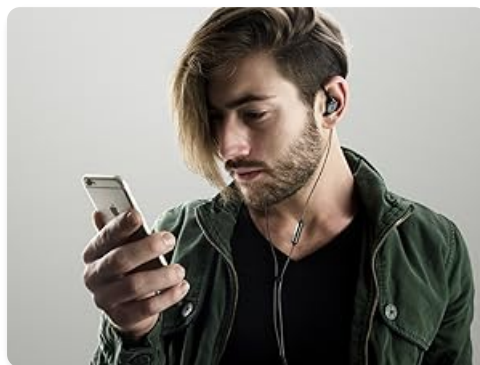


Image: The 1/4 inch (6.3mm) audio adapter, used for compatibility with various audio equipment.

SETUP & FIT

Achieving a proper seal with the eartips is crucial for optimal sound quality and noise isolation. Experiment with the included eartips to find the best fit for each ear. The flexible memory wire earhooks ensure a secure and comfortable fit.

Eartip Selection

The M6 PRO comes with 7 pairs of eartips, including Comply T-Series memory foam tips and various sizes of

silicone eartips. A good seal is indicated by balanced bass response and reduced outside noise. You may need different sizes for each ear.

HOW TO WEAR PROPERLY

- 1 Adjust each earpiece until it fits flush in your ear and the eartip seals the ear canal.
- 2 Bend the memory wire around your ear to achieve a conforming fit while
- 3 pulling the cable behind your ear with the other hand
- 4 until the fit is tight and secure.

Use the cable cinch **A** and shirt clip **B** to help with a more secure fit.



Image: Various sizes and types of eartips provided for a customized and secure fit.



Image: A selection of eartips, including silicone and memory foam, to ensure optimal fit and sound.

Wearing the Monitors

The M6 PRO is designed to be worn with the cable over the ear to provide a secure fit and minimize cable noise.

1. Adjust each earpiece until it fits flush in your ear and the eartip seals the ear canal.
2. Bend the memory wire around your ear to achieve a conforming fit.

3. Pull the cable behind your ear with the other hand until the fit is tight and secure.

Use the cable cinch and shirt clip for additional security.



Image: Step-by-step visual guide on how to properly wear the M6 PRO for a secure and comfortable fit.



Image: The flexible memory wire earhook conforming to the ear for a stable fit.

Official Product Video: How to Wear M6 PRO

Your browser does not support the video tag.

Video: A detailed guide on how to properly wear the MEE audio M6 PRO for optimal fit and performance.

OPERATING INSTRUCTIONS

The M6 PRO includes a headset cable with an in-line microphone and remote, allowing for convenient control of media playback and calls on compatible devices.

Using the Headset Cable

Connect the headset cable to your mobile device or laptop. The in-line remote allows you to play/pause music, skip tracks, and answer/end calls. The integrated microphone enables clear voice communication.



BUILT TO LAST

Engineered for real-world reliability with a sweat-resistant design and detachable, replaceable cables

Image: A user demonstrating the use of the headset cable with its built-in microphone and remote for phone calls and media control.

MAINTENANCE

The M6 PRO features detachable, user-replaceable cables, enhancing its real-world reliability and extending product lifespan.

Replacing Cables

1. To remove a cable, grasp the earpiece and the cable connector firmly. Pull straight apart without twisting.
2. To attach a new cable, align the notches on the connector with the grooves in the earpiece. Twist slightly until they catch, then push the connector in until it fits securely.



SOUND-ISOLATING DESIGN

Comply™ T-Series memory foam eartips reduce outside noise, enabling safer listening volumes and improving sound quality

Image: Detailed view of the detachable cable mechanism, showing how to connect and disconnect the cables from the earbuds.



Image: The M6 PRO earbuds with their cables detached, illustrating the user-replaceable cable feature.

TROUBLESHOOTING

Sound Quality Issues

The sound quality of in-ear monitors is highly dependent on how well the eartip seals in your ear canals. If your M6 PRO monitors sound thin, tinny, or distant, and the bass seems weak or nonexistent, they have not achieved a good

seal with your ears.

Solution:

- Try switching one or both eartips to a different size.
- Gently push on the outside of your monitors to check your seal. The correct eartip for each ear will feel sealed, reduce outside noise, and provide balanced bass response. Note: You may need to use a different size eartip in each ear.

SPECIFICATIONS

| Feature | Detail |
|-------------------------------|------------------------------|
| Driver Type | Moving Coil (Dynamic) |
| Driver Size | 10 mm |
| Frequency Response | 20 Hz to 20 kHz |
| Impedance | 16 Ohms at 1K |
| Sensitivity | 100±3 dB (1mW at 1KHz) |
| Maximum Power Input | 30mW |
| Microphone Directivity | Omnidirectional |
| Microphone Frequency Response | 100 Hz to 10 kHz |
| Microphone Sensitivity | -42dB± 3dB |
| Ear Coupling | Intra-aural (in-ear) |
| Cable Length | 51 inches (1.3m), detachable |
| Cable Connector | 3.5mm, right angle plug |
| Water Resistance Rating | IPX5 |
| Item Weight | 5.8 Ounces |
| Color | Black |
| Material | Aluminum |

WARRANTY & SUPPORT

The MEE audio M6 PRO In-Ear Monitor Headphones come with a 1-year warranty. For support or warranty claims, please refer to the contact information provided in your product packaging or visit the MEE audio website.