

Keter 235162

Keter Jaipur Rattan Outdoor Sunlounger Instruction Manual

Model: 235162

1. INTRODUCTION

Thank you for choosing the Keter Jaipur Rattan Outdoor Sunlounger. This manual provides essential information for the safe assembly, operation, and maintenance of your new sunlounger. Please read these instructions carefully before use and retain them for future reference.

The Keter Jaipur Sunlounger is designed for outdoor relaxation, featuring a durable, weather-resistant resin construction with a stylish rattan texture. It offers an adjustable backrest and a foldable design for convenient storage.

2. SAFETY INSTRUCTIONS

- Ensure all components are securely assembled before use.
- Do not exceed the maximum weight capacity of the sunlounger.
- Keep children and pets away from the sunlounger during assembly.
- Avoid placing the sunlounger on uneven surfaces to prevent tipping.
- Do not stand on the sunlounger.
- Regularly inspect the sunlounger for any signs of damage or wear. Discontinue use if damage is found.
- Use caution when adjusting the backrest to avoid pinching fingers.

3. PACKAGE CONTENTS

Please verify that all parts are present before beginning assembly. While specific component names are not provided, the sunlounger typically includes:

- Main sunlounger frame sections
- Legs
- Adjustable backrest mechanism components

- Fasteners (screws, bolts, etc.)



Figure 3.1: Underside view of the Keter Jaipur Sunlounger showing structural components.

4. SETUP AND ASSEMBLY

The Keter Jaipur Sunlounger is designed for easy assembly, requiring only basic household tools. Follow these general steps:

1. Unpack all components and lay them out on a clean, flat surface.
2. Identify the main frame sections and the legs.
3. Attach the legs to the designated points on the sunlounger frame, ensuring they are securely fastened.
4. Assemble the adjustable backrest mechanism according to the visual guides provided with your product. Ensure all moving parts are correctly aligned and secured.
5. Once assembled, gently test the stability of the sunlounger before full use.

5. OPERATING INSTRUCTIONS

5.1 Adjusting the Backrest

The Jaipur Sunlounger features an adjustable backrest with four reclining positions for optimal comfort. To adjust the backrest:

1. Gently lift the backrest to disengage it from its current position.
2. Move the backrest to the desired angle (9°, 30°, 50°, or 70°).
3. Ensure the backrest mechanism securely locks into place at the chosen position before applying weight.



Figure 5.1: The adjustable backrest offers four reclining positions.

5.2 Folding for Storage

The sunlounger's foldable design allows for minimal storage space during colder months or when not in use.

1. Ensure the backrest is in its lowest, flat position.
2. Follow the product-specific folding mechanism to collapse the sunlounger. This typically involves releasing latches or folding hinges.
3. Once folded, the sunlounger can be stored upright or flat.

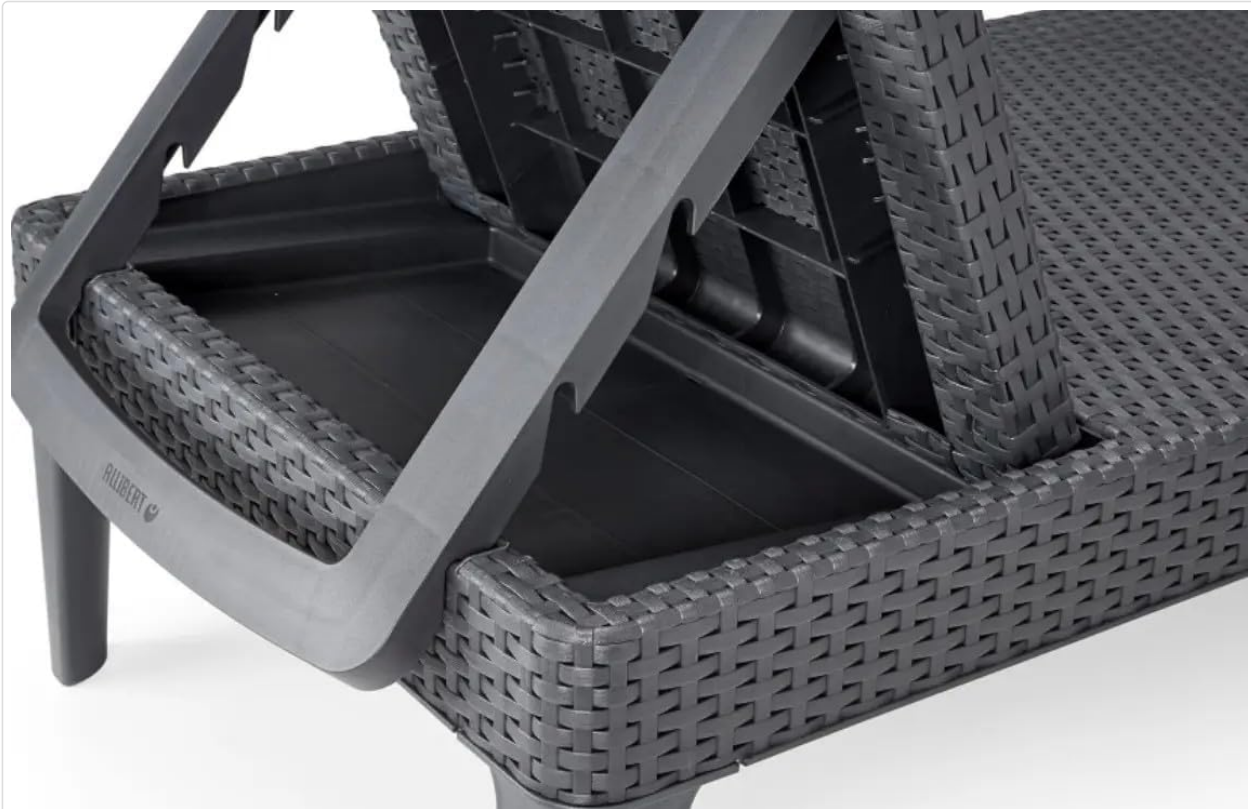


Figure 5.2: The sunlounger can be folded flat or upright for space-saving storage.

6. MAINTENANCE

To ensure the longevity and appearance of your Keter Jaipur Sunlounger, follow these simple maintenance guidelines:

- **Cleaning:** Wipe clean with a damp cloth and mild soap. Avoid abrasive cleaners or harsh chemicals, as these can damage the resin material.
- **Storage:** During prolonged periods of non-use, especially in harsh weather conditions, it is recommended to fold and store the sunlounger indoors or under a protective cover.
- **Inspection:** Periodically check all fasteners and connections to ensure they remain tight. Tighten if necessary.

7. TROUBLESHOOTING

If you encounter any issues with your sunlounger, consider the following common solutions:

- **Instability:** Ensure all legs are properly attached and all fasteners are tightened. Verify the sunlounger is on a flat, level surface.
- **Backrest not adjusting smoothly:** Check for any obstructions in the adjustment mechanism. Ensure the mechanism is clean and free of debris.
- **Difficulty folding:** Ensure the backrest is fully lowered. Check for any components that might be misaligned or obstructed.

For issues not resolved by these steps, please contact Keter customer support.

8. SPECIFICATIONS

Feature	Specification
Brand	Keter
Model Number	235162
Colour	Graphite
Product Dimensions (L x W x H)	187 cm x 58 cm x 29 cm
Material	Resin Plastic
Item Weight	8.8 kg
Special Feature	Space Saving, Adjustable Backrest
Back Style	Solid Back
Frame Material	Polypropylene, Rattan
Product Care Instructions	Wipe Clean

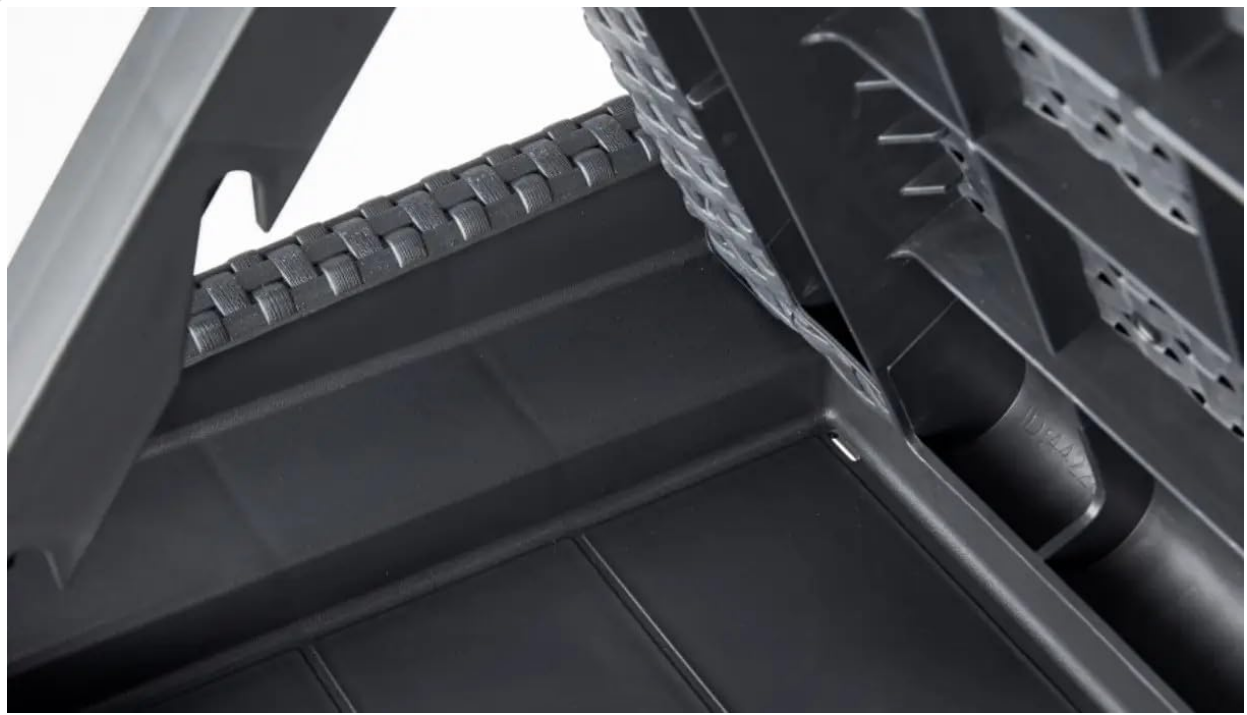


Figure 8.1: Product dimensions of the Keter Jaipur Sunlounger.


9. WARRANTY AND SUPPORT


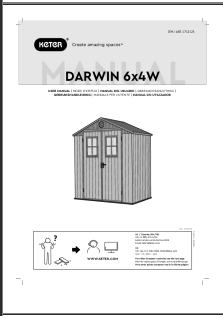


The Keter Jaipur Rattan Outdoor Sunlounger comes with a **3-year assurance** from the manufacturer. This assurance covers manufacturing defects but excludes cushions, if applicable. Please retain your proof of purchase for warranty claims.

For further assistance, technical support, or warranty inquiries, please contact Keter customer service through their official website or the retailer where the product was purchased.

© 2023 Keter. All rights reserved.

Related Documents - 235162

	<p>Keter Daytona Deluxe Sun Lounger Assembly Instructions</p> <p>Assembly guide and product details for the Keter Daytona Deluxe Sun Lounger (Model 5008536). Includes safety information, parts list, step-by-step assembly instructions, and Keter's commitment to sustainability.</p>
<p><small>User Manual of Product 1: Shintenchi 4 Piece Outdoor Patio Furniture Set, Small Wood Patio Conversation Furniture Set: Clear Set with Tempered Glass Coffee Table For Backyard Patio Garden Porches Shining Stone</small></p> <p><small>User Manual of Product 2: Keter Pacific Cool Bar Outdoor Patio Furniture and Hot Tub Gazebo Table with 12 Outdoor Bar and Wine Cooler, Stone</small></p>	<p>Outdoor Patio Furniture & Cooler Assembly: Shintenchi & Keter Pacific Cool Bar Guides</p> <p>Detailed assembly instructions and user guide for the Shintenchi 4 Piece Outdoor Patio Furniture Set and the Keter Pacific Cool Bar. Includes comprehensive parts lists, step-by-step visual descriptions, and essential safety warnings for both products.</p>

	<p>Keter Corfu Love Seat Max Assembly Instructions</p> <p>Detailed assembly instructions for the Keter Corfu Love Seat Max, including a parts list and step-by-step guidance. This manual is available in multiple languages.</p>
	<p>Keter Darwin 6x4W Garden Shed Assembly Manual - Instructions and Guide</p> <p>Comprehensive assembly manual for the Keter Darwin 6x4W garden shed. Includes site preparation, parts list, step-by-step assembly instructions, and care guidelines. Available in multiple languages.</p>
	<p>Keter Wood Look Elevated Garden Assembly and Care Guide</p> <p>Comprehensive guide for assembling and maintaining the Keter Wood Look Elevated Garden, including optimal irrigation tips and contact information for customer support.</p>
	<p>Keter Elevated Garden Bed: Assembly and Irrigation Guide</p> <p>Comprehensive guide for assembling and optimally irrigating your Keter Elevated Garden Bed. Includes parts list, step-by-step instructions, and watering tips for healthy plant growth.</p>

Documents - Keter – 235162



[\[pdf\]](#) Catalog

00 Keter Catalogo Coleccion Jardin 2020 Libro indb Brycus Oct 28 2019 · 245957 Marrón NUEVO 62

COLECCIÓN JARDÍN 63 CASSETAS Y COBERTIZOS TRANSPORTE CÓMODO EN COCHE MONTAJE

SENCILLO catalogo keter qJt8pmC media brycus es product files |||

COLECCIN JARDN 2020 COLECCIN JARDN 2020 CONTENIDO A better world with

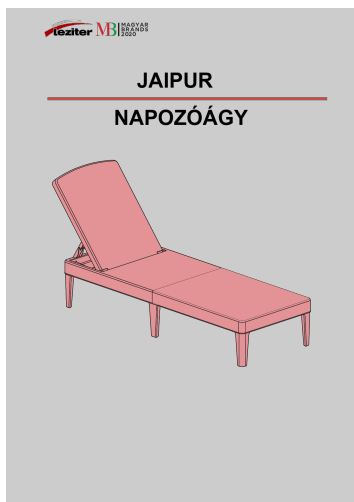
Keter Mobiliario Casetas y ... gar para mejor almacenaje. MEDIDA PRODUCTO 187

x 58 x 29 cm MEDIDA EMBALAJE 124 x 80 x 250 cm SAP: **235162** Grafito NUEVO

TUMBONA MOUNTAIN ADIRONDACK IMITACIN MADERA Amplio silln para

disfrutar senta...

lang:es score:16 filesize: 59.98 M page_count: 85 document date: 2020-01-31



[\[pdf\]](#)

Keter 235162 Jaipur kerti nyugagy szerelési utmutato Leziter Kft SZERELÉSI ÚTMUTATÓ JAIPUR KERTI NYUGÁGY nyugagy leziteronline hu Fürdőszoba Kert shop ordered 29429 pic ||| JAIPUR NAPOZGY ...

lang:es **score:11** filesize: 1.41 M page_count: 10 document date: 2021-04-23

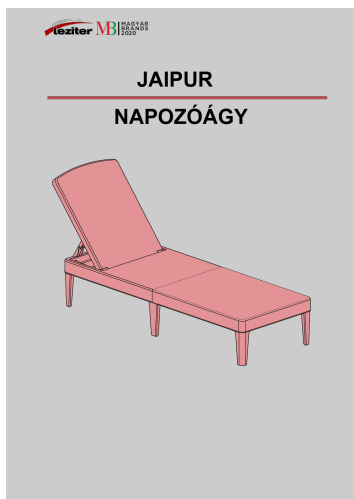


[\[pdf\]](#) Catalog

CATALOGUE 2023 13 juin — CORFU FIESTA SET 17198008 szék x2 75 x 70 79 cm kanapé 128 asztal 161 95 2 DUO 17197993 Katalógusok Homelux Keter katalogus leziteronline hu shop ordered 26000 pic Katalógusok |||

CATALOGUE 2023 We design with people in mind. Szek 1. MALLORCA 17180335 56 x 58 x 79 cm grafit ... zld cappuccino 218112 227646 100 RECYCLED PLASTIC 4. JAIPUR 17205843 187 x 58 x 29 cm grafit **235162** cappuccino whiskey 235163 barna 237958 77 RECYCLED PLASTIC 5. ATLANTIC 17199231 197 x ...

lang:i-klíngon **score:11** filesize: 7.16 M page_count: 14 document date: 2023-04-20

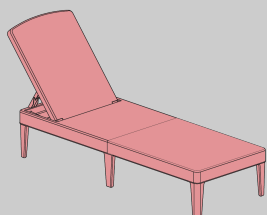


[\[pdf\]](#)

Keter 664866 235162 Jaipur kerti nyugagy set Rosario asztallal szerelési utmutato Leziter Kft SZERELÉSI ÚTMUTATÓ JAIPUR KERTI NYUGÁGY SET ROSARIO ASZTALLAL nyugagy Rosario leziteronline h hu shop ordered 29429 pic ||| JAIPUR NAPOZGY ...

lang:i-klíngon **score:10** filesize: 1.41 M page_count: 10 document date: 2021-04-23

JAIPUR NAPOZÓÁGY



[\[pdf\]](#)

Keter 664866 235162 2 Jaipur Duo kerti nyugagy set Rossario asztallal szerelesi utmutato Leziter Kft
SZERELÉSI ÚTMUTATÓ JAIPUR DUO KERTI NYUGÁGY SET ROSARIO ASZTALLAL duo nyugagy
Rosario leziteronli leziteronline hu shop ordered 29429 pic |||

JAIPUR NAPOZGY ...

lang:i-klíngon score:10 filesize: 1.41 M page_count: 10 document date: 2021-04-23