

## Ingenuity 10875

# Ingenuity InLighten Baby Swing - Braden Instruction Manual

Model: 10875 | Brand: Ingenuity

### IMPORTANT SAFETY INFORMATION

Always read all instructions before using the product. Failure to follow these instructions could result in serious injury or death. Keep this instruction manual for future reference.

- Never leave child unattended.
- Do not use this product if your child can sit up unaided or weighs more than 20 lbs (9 kg).
- Always use the restraint system.
- Do not move or lift the product with the child in it.
- Keep away from heat sources, open flames, and water.
- Only use the USB cord provided. AC adapter and C battery for vibration are not included.

For complete safety guidelines and warnings, please refer to the full user manual available as a PDF document.

### PRODUCT OVERVIEW & FEATURES

The Ingenuity InLighten Soothing Swing in Braden fashion offers comfort and security for your little one. Featuring breathable mesh fabric for a cooler experience, this swing provides 180° rotation to keep your baby in sight. Vibrating movements help soothe and calm, while plug-in technology powers 6 swing speeds in 3 different directions with an extra quiet motor. For entertainment, connect a smart device via USB to play personalized music or videos, and enjoy the light-up mobile with 2 plush toys and a mirror for self-discovery. The foldable design with wheels allows for easy transport and storage.

- **Swivel Infant Seat:** Rotates 180° and swings in 3 directions for optimal visibility and soothing.
- **Breathable Mesh Fabric:** Promotes airflow for a cooler and more comfortable environment.
- **Vibrations:** Helps to soothe and calm your baby.
- **6 Swing Speeds:** TrueSpeed Technology maintains consistent speeds as your baby grows.
- **LightBeams Mobile:** Includes 2 plush toys (owl and lion) and projects a dazzling light show. A mirror on the underside encourages self-discovery.
- **ConnectMe Feature:** Connect a smart device via USB to play personalized music, videos, or photos.
- **Sound Machine:** Plays 20 melodies including nature sounds and white noise.

- **Timer Settings:** Choose from 30, 45, or 60 minutes.
- **2 Recline Positions:** For baby's comfort.
- **5-Point Safety Harness:** Ensures baby's security.
- **Foldable Design:** Lightweight with wheels for portability and easy storage.
- **Easy to Clean:** Machine washable seat pad and bolster; frame and toys wipe clean.

## Product Overview Video

Your browser does not support the video tag.

This video provides a brief overview of the Ingenuity InLighten Soothing Swing, highlighting its key features and benefits for soothing and entertaining your baby.

## Product Images



Front view of the Ingenuity InLighten Baby Swing in Braden color, featuring the seat, mobile with plush toys, and sturdy frame.



A baby lying comfortably in the swing, demonstrating the spacious and cushioned seat.

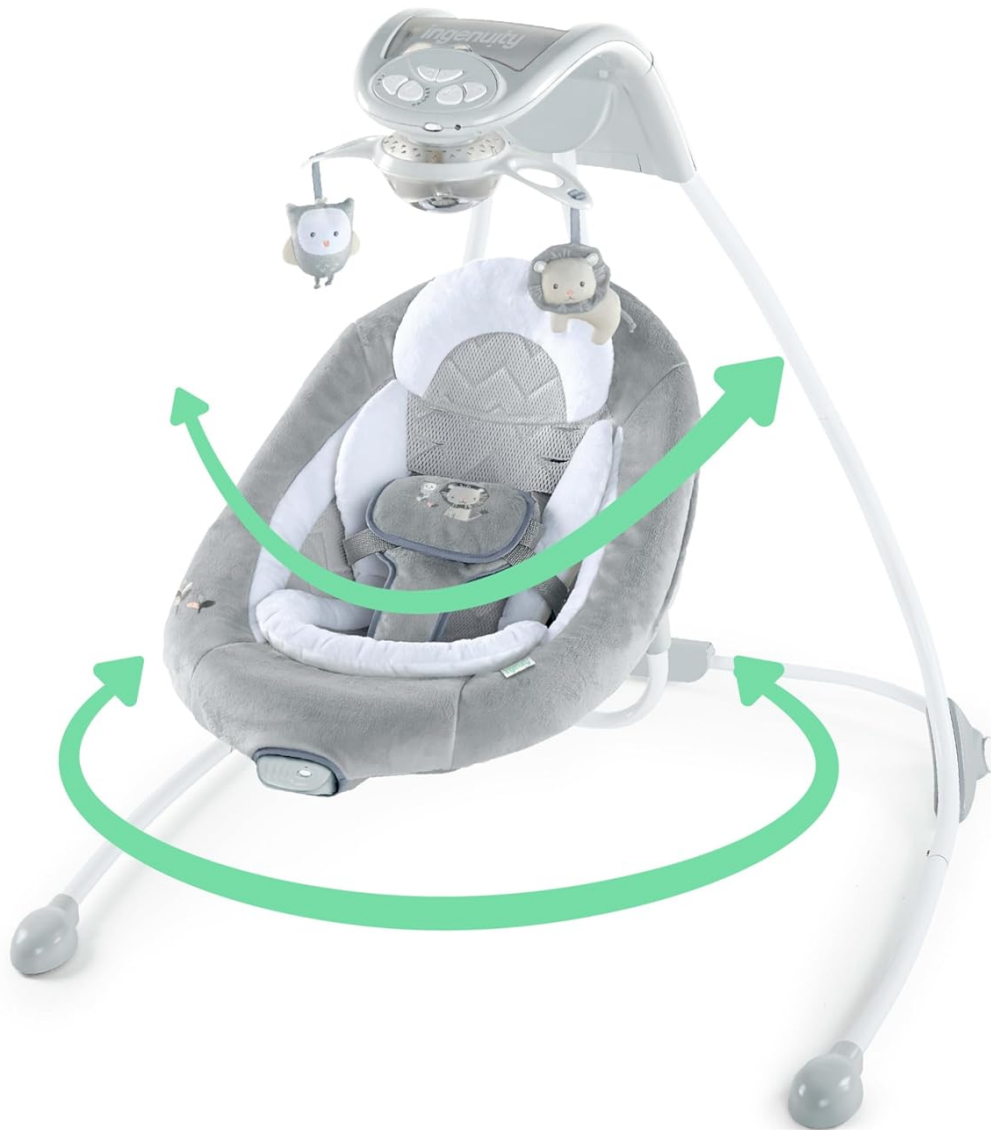


Illustration of the swing's 180-degree seat rotation and multi-directional swinging capabilities.



A happy baby enjoying the swing in a home setting, highlighting its comfortable design.





A hand connecting a smartphone to the swing's control panel via USB, demonstrating the ConnectMe feature.

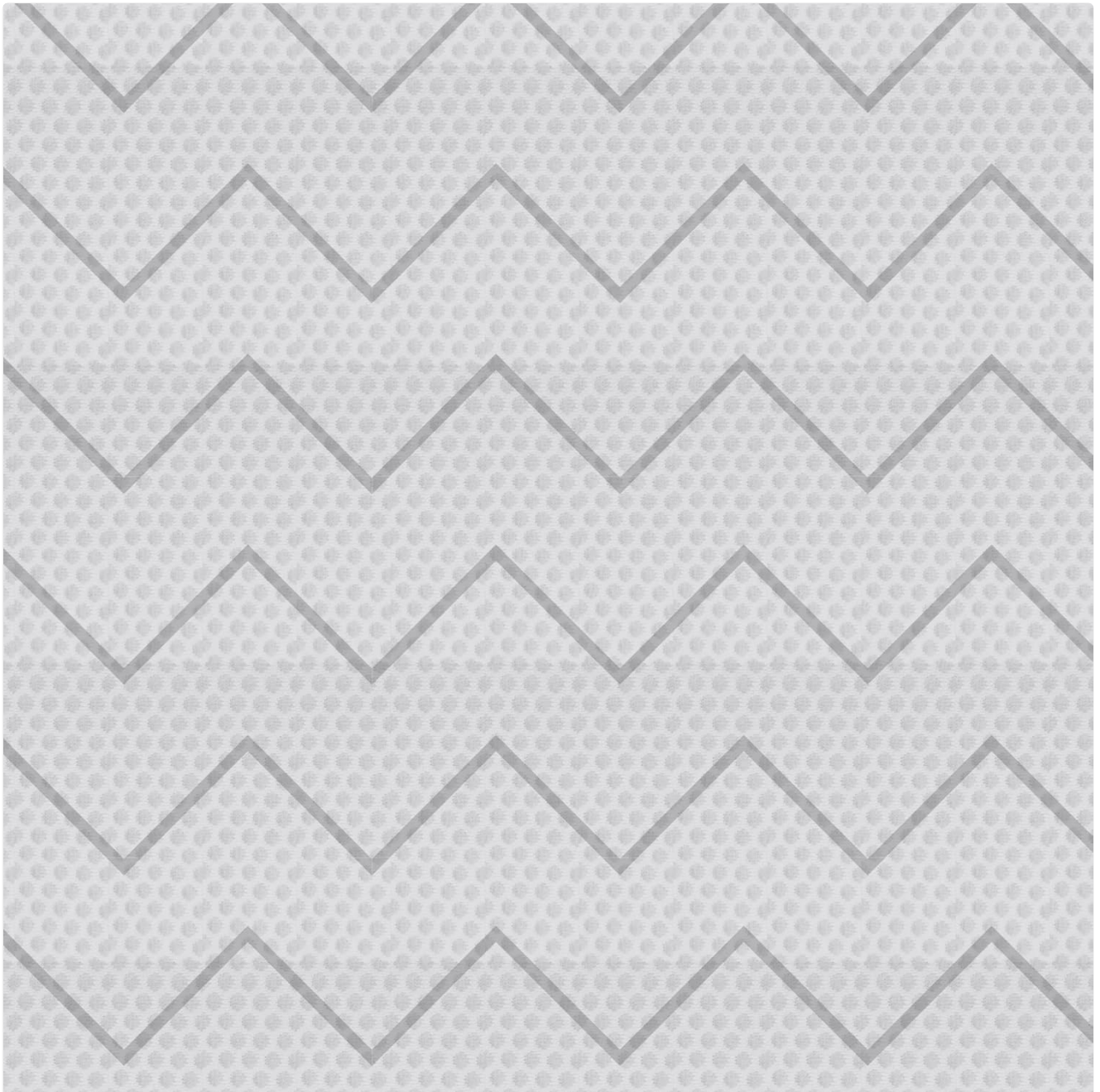


The swing shown in its folded position, illustrating its compact design for easy storage and portability.



A hand placing the removable seat pad into a washing machine, demonstrating the ease of cleaning.





A parent securing a baby into the 5-point safety harness, emphasizing the product's safety features.



An illustration detailing the assembled dimensions of the Ingenuity InLighten Baby Swing.

## ASSEMBLY INSTRUCTIONS

Before beginning assembly, ensure all parts are present and accounted for. You will need a Phillips head screwdriver and a USB A adapter (not included) for full functionality. Follow the steps below carefully.

1. **Unpack Components:** Carefully remove all parts from the packaging. Remove any protective plastic or styrofoam.
2. **Assemble the Base:** Connect the three main leg pieces to the central base unit. Ensure they click securely into place. The wires for power should be routed through the designated channels in the legs.
3. **Attach Support Arms:** Connect the shorter support arms to the main leg assembly. These will provide additional stability.
4. **Secure with Screws:** Use the provided screws and your Phillips head screwdriver to firmly attach the support arms to the main frame. Ensure all screws are tightened for stability.
5. **Connect Power Cable:** Once the frame is assembled, connect the swing's power cable to the designated port on the base.

6. **Assemble Seat Frame:** Slide the padded seat cover onto the seat frame. Ensure it is properly aligned and secured.
7. **Attach Seat to Swing:** Carefully attach the assembled seat to the main swing arm. Press the silver buttons on the side of the seat frame to slide it into place until it clicks.
8. **Secure Seat Cover:** Fasten the polyester straps and buckles on the underside of the seat cover to the seat frame for a snug and secure fit.
9. **Install Mobile:** Attach the mobile unit to the top of the swing frame. It should snap securely into place.
10. **Connect USB Power:** Plug the included USB cord into the swing and connect it to your USB A adapter. Plug the adapter into a wall outlet.

## Assembly Video Guide

Your browser does not support the video tag.

This video provides a detailed step-by-step guide on how to assemble your Ingenuity InLighten Baby Swing, including unpacking and connecting all components.

## OPERATING INSTRUCTIONS

Familiarize yourself with the control panel located on the top of the swing unit.

- **Power On/Off:** Press the main power button to turn the swing on or off.
- **Adjust Swing Speed:** Use the speed control buttons to select one of the 6 available swing speeds. The TrueSpeed Technology ensures consistent speed as your baby grows.
- **Change Swing Direction:** The seat can rotate 180 degrees and swing in 3 different directions. Manually rotate the seat to change the swing direction.
- **Activate Mobile & Lights:** Press the mobile button to activate the motorized mobile with its light-up feature. The LightBeams mobile projects a dazzling light show.
- **Select Sounds & Melodies:** Use the sound selection button to cycle through 20 melodies, nature sounds, and white noise options.
- **Adjust Volume:** Control the audio volume using the dedicated volume buttons.
- **Set Timer:** Choose a timer setting of 30, 45, or 60 minutes for automatic shut-off.
- **Connect External Device:** Utilize the ConnectMe feature by plugging your smartphone or other smart device into the USB port to play personalized music, videos, or display photos.
- **Adjust Recline:** The seat offers 2 recline positions for your baby's comfort. Adjust by pressing the recline buttons on the side of the seat.
- **Folding for Storage:** To fold the swing for portability or storage, locate the folding mechanism (usually a button or lever on the frame) and follow the instructions to collapse the unit. The wheels facilitate easy movement.

## MAINTENANCE & CARE

Proper maintenance ensures the longevity and safety of your Ingenuity InLighten Baby Swing.

- **Seat Pad and Headrest:** Machine wash with cold water on a gentle cycle.
- **Frame, Toy Bar, and Toys:** Wipe clean with a damp cloth and mild soap.
- **Do Not Immerse:** Do not immerse toys in water.
- **Regular Checks:** Periodically check all screws, bolts, and fasteners to ensure they are securely tightened. Inspect the frame and fabric for any signs of wear or damage.

## TROUBLESHOOTING

If you encounter any issues with your Ingenuity InLighten Baby Swing, try the following basic troubleshooting steps:

- **Swing Not Operating:**

- Ensure the USB cord is securely plugged into both the swing and the power adapter, and the adapter is firmly in a working wall outlet.
- Check if the C battery for vibration (if used) is correctly installed and not depleted.
- Verify the power button on the control panel is pressed.

- **Mobile Not Turning/Lights Not Working:**

- Ensure the mobile unit is correctly attached to the swing frame.
- Check power connections as above.

- **Sound/Music Issues:**

- Adjust the volume settings on the control panel.
- If using ConnectMe, ensure your external device's volume is up and the connection is secure.

- **Swing Appears Unstable:**

- Verify that all leg pieces and support arms are fully extended and securely locked into place.
- Ensure the seat is properly attached and clicked into its designated slots.

For more detailed troubleshooting steps or persistent issues, please consult the comprehensive user manual (PDF) or contact Ingenuity customer support.

## SPECIFICATIONS

<b>Product Dimensions (Assembled)</b>	31.89"D x 42.13"W x 40.94"H (81 cm D x 107 cm W x 104 cm H)
<b>Item Weight</b>	10.63 pounds (4.83 kg)
<b>Materials</b>	64% Metal, 29% Plastic, 7% Fabric
<b>Minimum Weight Recommendation</b>	6 Pounds
<b>Maximum Weight Recommendation</b>	20 Pounds
<b>Target Gender</b>	Unisex
<b>Power Source</b>	Corded Electric (USB cord included), 1 C battery for vibration (not included)
<b>Battery Life (Vibration)</b>	260 Hours (with 1 C battery)
<b>Item Model Number</b>	10875

## WARRANTY & SUPPORT

For detailed warranty information, product registration, or to access the complete user manual, please visit the official Ingenuity website or refer to the documentation included with your product.



You can also download the full User Manual (PDF)[here](#).

Protection plans are available for purchase separately:

- 2-Year Protection Plan: \$21.99
- 3-Year Protection Plan: \$28.99
- Complete Protect: \$16.99/month (covers all eligible past and future purchases)