



[Manuals.plus](#) /

› [Peerless](#) /

› Peerless Xander P6919LF Pull-Out Kitchen Faucet Instruction Manual

Peerless P6919LF

Peerless Xander P6919LF Pull-Out Kitchen Faucet Instruction Manual

INTRODUCTION

This manual provides detailed instructions for the installation, operation, maintenance, and troubleshooting of your Peerless Xander P6919LF Single Handle Pull-Out Kitchen Faucet. Please read all instructions carefully before beginning installation or use to ensure proper function and longevity of your product.



Image: The Peerless Xander P6919LF Chrome Pull-Out Kitchen Faucet, showcasing its modern design and chrome finish, installed in a kitchen setting.

SETUP AND INSTALLATION

The Peerless Xander P6919LF faucet is designed for easy installation in either single-hole or 3-hole sink configurations. For 3-hole installations, an optional deck plate (model RP93991) must be purchased separately to cover unused sink holes. All necessary supply lines are conveniently included with your faucet.

Installation Steps Overview:

1. **Prepare the Sink Area:** Ensure the sink area is clean and clear of any debris. Turn off the water supply at the main shut-off valves.
2. **Mount the Faucet:** Insert the faucet body through the desired hole(s) in the sink or countertop. If using the optional deck plate for a 3-hole installation, place it over the holes before inserting the faucet.
3. **Secure the Faucet:** From underneath the sink, secure the faucet using the provided mounting hardware. Ensure the faucet is properly aligned before tightening.

4. **Connect Supply Lines:** Attach the included hot and cold supply lines to the corresponding water supply valves. Hand-tighten first, then use a wrench for a quarter turn to ensure a secure, leak-free connection.
5. **Connect Sprayer Hose:** Connect the pull-out sprayer hose to the designated port on the faucet body.
6. **Install Weight:** Attach the hose weight to the pull-out sprayer hose at the indicated position to ensure proper retraction.
7. **Test for Leaks:** Slowly turn on the water supply and check all connections for leaks. Run the faucet for a few minutes to flush out any debris.

1 OR 3-HOLE INSTALLATION



ADDITIONAL DIMENSIONS

HOLE SIZE
1.31–1.5 inches

WATER SUPPLY CONNECTION
.56 inches

Image: A detailed diagram illustrating the dimensions of the Peerless Xander faucet, including height, spout reach, minimum clearance to backsplash, and hole size requirements for 1 or 3-hole installation. It also notes the optional escutcheon (deck plate RP93991) for 3-hole setups.

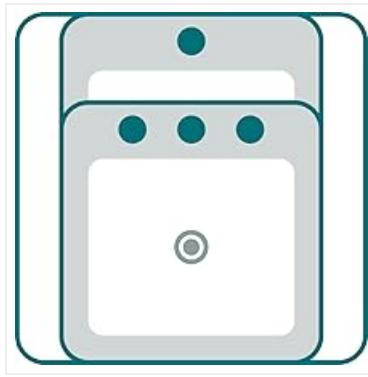


Image: An illustration demonstrating the flexibility of the Peerless Xander faucet for installation in either a single-hole or a three-hole kitchen sink configuration.

Your browser does not support the video tag.

Video: An official product video demonstrating the features and possibly installation aspects of the Peerless Xander Pull Out Kitchen Sink Faucet. This video highlights the functionality and design of the faucet.

OPERATING INSTRUCTIONS

Your Peerless Xander faucet offers convenient and flexible operation for various kitchen tasks.

Water Flow and Temperature Control:

- The single lever handle controls both water flow volume and temperature.
- Lift the handle to increase water flow.
- Move the handle left for hot water and right for cold water.

Pull-Out Sprayer Functionality:

- The pull-out spray wand features a 20-inch retractable hose, providing extended reach for cleaning and filling tasks.
- Easily toggle between a steady stream and a powerful spray by pressing the button on the spray head.
- The faucet spout swivels 120 degrees, offering enhanced flexibility and access to all areas of your sink.

The faucet has a water consumption rate of 1.5 gallons per minute (GPM).



Image: A person demonstrating the use of the pull-out sprayer feature of the Peerless Xander kitchen faucet, showing the extended hose and spray function.

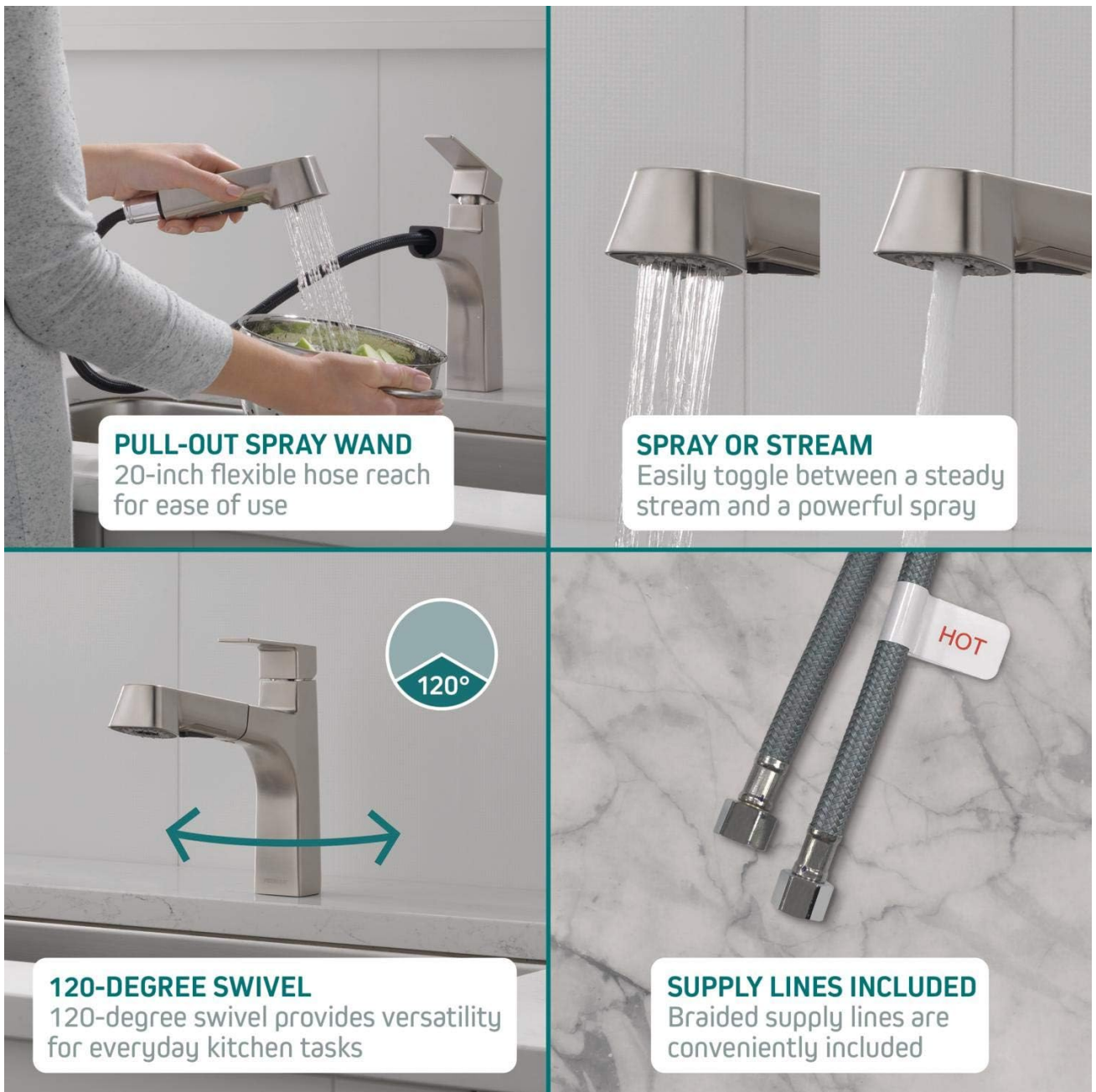


Image: A composite image highlighting key features: the 20-inch flexible hose of the pull-out spray wand, the ability to easily toggle between spray and stream, the 120-degree swivel for increased versatility, and the inclusion of braided supply lines for installation.



Image: The Peerless Xander kitchen faucet in operation, showing a steady stream of water flowing into the sink, demonstrating its standard water delivery mode.

MAINTENANCE

Regular cleaning and maintenance will help preserve the finish and functionality of your Peerless Xander faucet.

Cleaning the Faucet:

- Clean the faucet regularly with a soft cloth and mild soap. Rinse thoroughly with water and dry with a soft cloth to prevent water spots.
- Avoid using abrasive cleaners, harsh chemicals, or scouring pads, as these can damage the chrome finish.
- The spray holes on the pull-out wand are designed for easy cleaning. Simply wipe away mineral residue with your finger or a soft brush.

General Care:

- Periodically check all connections for tightness to prevent leaks. Do not overtighten.
- If water flow decreases, check the aerator for mineral buildup and clean as necessary.

TROUBLESHOOTING

If you encounter issues with your Peerless Xander faucet, refer to the common problems and solutions below. For persistent issues, contact customer support.

Problem	Possible Cause	Solution
---------	----------------	----------

Problem	Possible Cause	Solution
Low Water Flow	Clogged aerator; partially closed shut-off valves; debris in supply lines.	Clean or replace aerator; ensure shut-off valves are fully open; flush supply lines.
Leaks from Faucet Base	Loose mounting nuts; worn O-rings or gaskets.	Tighten mounting nuts; inspect and replace O-rings/gaskets if damaged.
Sprayer Does Not Retract Fully	Hose weight improperly positioned or obstructed; hose kinked.	Adjust hose weight position; ensure hose is free of kinks and obstructions.
Water Temperature Issues	Improperly connected supply lines; issue with water heater.	Verify hot and cold supply line connections; check water heater settings.

SPECIFICATIONS

Feature	Detail
Brand	Peerless
Model Name	Xander Single Handle
Model Number	P6919LF
Finish Type	Chrome
Material	Metal, Ceramic (valve)
Mounting Type	Deck Mount
Installation Method	Single Hole (or 3-hole with optional deck plate RP93991)
Number of Handles	1 (Lever Handle)
Spout Design	Gooseneck
Spout Height	6.5 Inches
Spout Reach	8.19 Inches (from diagram)
Hose Length	20 Inches (retractable)
Swivel Angle	120 Degrees
Flow Rate	1.5 Gallons Per Minute (GPM)
Item Weight	2.08 Kilograms
Included Components	Single Handle Pullout Kitchen Faucet, Supply Lines
Manufacturer	Delta Faucet
UPC	344498663850, 034449866385

WARRANTY AND SUPPORT

Peerless stands behind the quality of its products. The Peerless Xander P6919LF faucet is backed by a **Lifetime Limited Warranty** on both the faucet and its finish. This warranty covers defects in material and manufacturing for as long as the original consumer purchaser owns the home in which the faucet was first installed. For warranty claims, technical assistance, or to order replacement parts, please contact Peerless customer support. You may also refer to the manufacturer's contact information:

Manufacturer: Delta Faucet

Address: INDIANAPOLIS, IN, 46280 US

Please retain your proof of purchase for warranty purposes.