



Manuals.plus /

- › CeilingConnex /
- › CeilingConnex Dakota Barn Tin Ceiling Tile Instruction Manual

CeilingConnex DT-Barn-Mix

CeilingConnex Dakota Barn Tin Ceiling Tile Instruction Manual

Model: DT-Barn-Mix

1. PRODUCT OVERVIEW

The CeilingConnex Upcycled 2'x2' Dakota Barn Tin Ceiling Tiles are designed for use with standard drop grids. These tiles are crafted from repurposed tin panels, offering a distinctive rustic aesthetic. Each tile features a unique appearance with variations in color and texture.

Key Features:

- Each tile measures 2'x2' (actual size 23.6"x 23.6").
- Made from repurposed tin panels, suitable for standard drop grid systems.
- Distinctive appearance with no two tiles being identical, featuring metallic grey, rust orange, light brown, or yellowish hues.
- American-made product.

2. SAFETY INFORMATION

When handling and installing Dakota Barn Tin Ceiling Tiles, prioritize safety to prevent injury. Metal edges can be sharp, and cutting operations produce sparks and noise.

Recommended Safety Equipment:

- **Leather or Cut-Resistant Gloves:** To protect hands from sharp edges.
- **Safety Glasses:** To protect eyes from debris and sparks during cutting.
- **Hearing Protection:** To reduce noise exposure during cutting operations.
- **Well-Ventilated Area:** Ensure adequate ventilation or work in an outdoor space when cutting to disperse fumes and dust.

Refer to Figure 4.1 in the Installation Instructions section for a visual guide on safety equipment.

3. TOOLS REQUIRED

The following tools are recommended for the installation and trimming of Dakota Barn Tin Ceiling Tiles:

- **Tape Measure:** For accurate measurements of tiles and grid.
- **Circular Saw:** For cutting tin panels.
- **Plywood Blade (7-1/4" x 150-Tooth):** Use a sharp plywood blade installed backwards in the circular saw for cleaner cuts and reduced burrs on metal.
- **Clamps (e.g., 2x4s):** To securely hold the tin panels during cutting.

Refer to Figure 4.1 in the Installation Instructions section for a visual guide on recommended tools.

4. INSTALLATION INSTRUCTIONS

These tiles are designed for a lay-in installation in a standard 15/16" T-bar ceiling grid. Follow the manufacturer's instructions for your specific ceiling grid system.

4.1. General Installation Steps:

1. Install a 15/16" T-bar ceiling grid according to the grid manufacturer's instructions.
2. For full-size 2'x2' tiles, simply lay them into the grid openings.
3. For edge trim pieces or custom sizes, measure the required dimensions.
4. Cut the tin panels to size using the recommended cutting method (see Section 4.2).
5. Carefully place the cut tiles into the remaining grid openings.

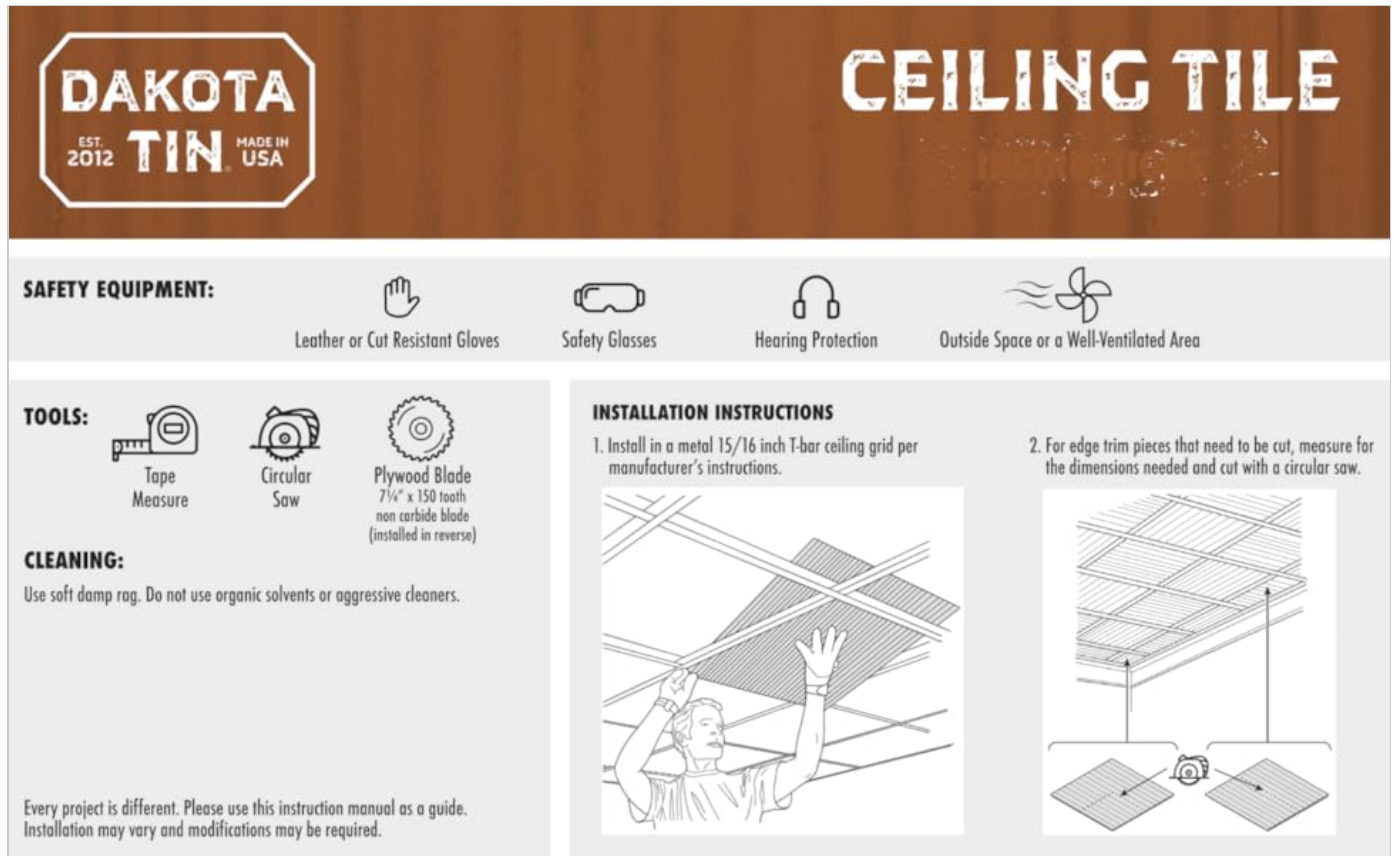


Figure 4.1: Illustration of safety equipment, tools, and ceiling grid installation with tile placement and cutting guidance.

4.2. Trimming Dakota Tin Panels:

When trimming tin panels, follow these steps for best results and safety:

1. **Measure and Mark:** Use a tape measure and a framing square to accurately mark the cut line on the tin panel.
2. **Prepare Circular Saw:** Use a circular saw with a sharp 7-1/4" x 150-tooth plywood blade. Install the blade backwards to achieve cleaner cuts and minimize burrs.
3. **Secure the Panel:** Secure the tin panel firmly using clamps and 2x4s to prevent movement during cutting. A more secure setup leads to fewer burrs.
4. **Cut the Panel:** Carefully cut along the marked line. Ensure the blade is sharp; dull blades can cause tearing and excessive burrs.

Your browser does not support the video tag.

Video 4.2.1: Demonstrates how to measure, mark, and cut Dakota Tin panels using a circular saw with a reversed plywood blade.

5. MAINTENANCE AND CLEANING

To maintain the appearance of your Dakota Barn Tin Ceiling Tiles, follow these guidelines:

- **Cleaning:** Use a soft, damp rag for cleaning. Do not use organic solvents or aggressive cleaners, as these may damage the finish.
- **Rusted Finish:** If you have the rusted style, it is recommended to seal it with a clear coat. The rust finish can rub off, and sealing helps preserve its appearance and prevents transfer.
- **Antique Finish:** The antique steel finish wears with time and may scratch. It can produce white rust with exposure to moisture. Sealing this style with a clear coat is recommended for high-wear areas or where oils might splatter, as it has a more porous surface.
- **Galvalume Finish:** This new galvanized steel finish is light grey with a semi-sheen and has no rust or color variation.

6. TROUBLESHOOTING

This section addresses common issues that may arise during installation or use.

Issue	Possible Cause	Solution
Excessive burrs after cutting	Dull saw blade; panel not securely clamped.	Ensure the circular saw blade is sharp and installed backwards. Securely clamp the tin panel with 2x4s during cutting.
Tiles do not fit properly in grid	Incorrect measurements; grid not installed to specifications.	Re-measure grid openings and tile dimensions. Ensure the ceiling grid is installed correctly and is square.
Rust rubbing off (Rusted finish)	Unsealed rusted finish.	Apply a clear coat sealant to the rusted tiles to prevent rust transfer.

7. PRODUCT SPECIFICATIONS

Attribute	Detail
Brand	CeilingConnex
Material	Steel
Size	2'x2' Tile (actual size 23.6" x 23.6")
Color	Random Mixture (recommended)
Finish Type	Unfinished (with natural variations)
Style	Rustic
Installation Type	Lay-In (for standard 15/16" T-bar grid)
Product Dimensions	24"L x 24"W
Pattern	Rustic
Item Weight	2.7 Pounds per tile
Shape	Square
Item Thickness	0.5 Inches
Edge Style	Square Edge
Coverage	Approximately 4 square feet per tile
Water Resistance Level	Not Water Resistant
Special Feature	Small Holes from Original Fastening (due to upcycled nature)
Model Number	DT-Barn-Mix

8. WARRANTY AND SUPPORT

CeilingConnex offers a 100% satisfaction guarantee on its products. For specific warranty details, product support, or to address any concerns, please contact CeilingConnex directly through their official website or the retailer where the product was purchased.

Note: As these tiles are upcycled, variations in appearance, minor imperfections, and small holes from original fastening are inherent characteristics and not considered defects.

9. PRODUCT GALLERY

View examples of CeilingConnex Dakota Barn Tin Ceiling Tiles in various settings and close-up details.



Figure 9.1: Dakota Barn Tin Ceiling Tiles installed in a commercial setting.



Figure 9.2: High ceiling application of mixed tin tiles with modern lighting.



Figure 9.3: High ceiling with uniform mixed tin tile pattern.



Figure 9.4: Detail of a rusted corrugated tin tile.



Figure 9.5: Detail of a galvanized corrugated tin tile.



Figure 9.6: Industrial loft ceiling featuring mixed tin tiles.

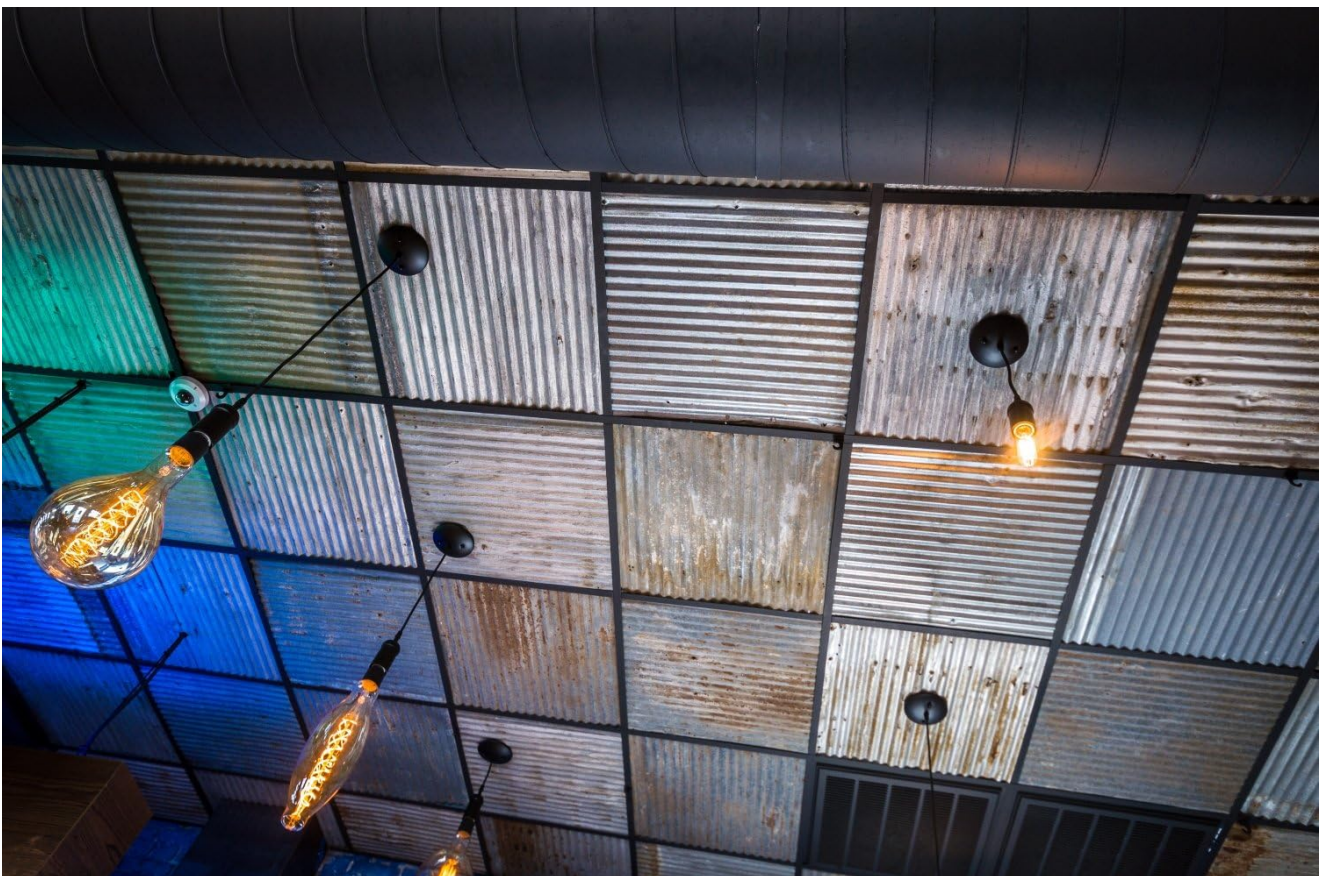


Figure 9.7: Bar area featuring tin awning and ceiling tiles.



Figure 9.8: Sunroom ceiling with mixed tin tiles.

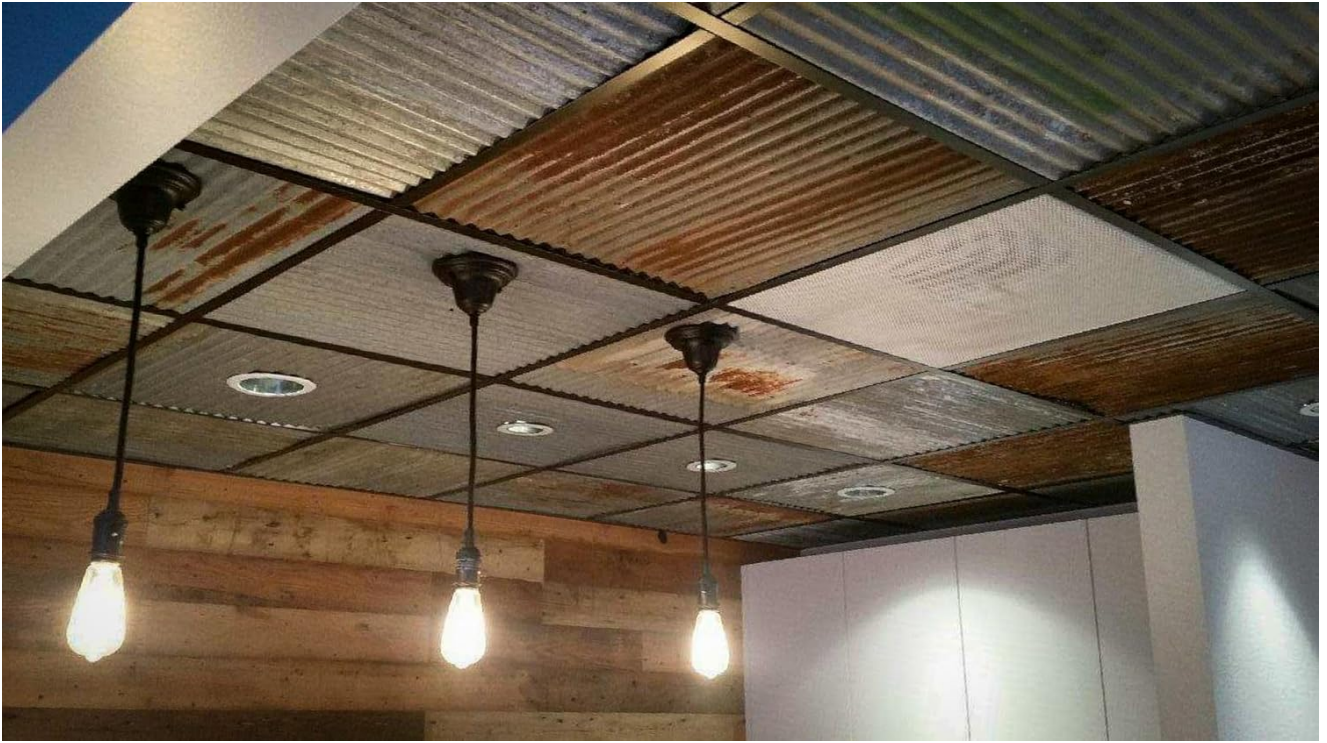


Figure 9.9: Mixed tin tile ceiling with integrated lighting.