

Polaris 7082265

Polaris Air Filter Part 7082265 Instruction Manual

Model: 7082265

1. PRODUCT OVERVIEW

The Polaris Air Filter, Part 7082265, is an essential component designed to protect your vehicle's engine. It prevents dirt and debris from entering the engine, which is critical for maintaining optimal performance and extending engine life. A clean air filter ensures proper airflow, preventing reduced engine performance and potential damage from foreign particles.

This air filter is engineered specifically for Polaris vehicles, ensuring a precise fit and validated performance. It is designed to meet the rigorous demands of various operating conditions.

Compatibility: This accessory is designed to fit various Polaris Ranger models, including:

- 2019 Ranger XP 1000 EPS
- 2019 Ranger Crew XP 1000 EPS
- 2019 Ranger Crew XP 1000 EPS Northstar HVAC Edition
- 2018 Ranger XP 1000 EPS
- 2020 RANGER 1000 CREW PS NSTR RC
- 2020 RANGER 1000 FULLSIZE PS FO
- 2020 RANGER 1000 PS
- 2020 RANGER 1000 PS RC
- 2020 RANGER 1000XP EPS EU TR ZUG
- 2020 RANGER 1000 CREW FULLSIZE PS FO
- 2020 RANGER 1000 CREW NSTR FACTORY CHOICE 49S & 50S
- 2020 RANGER 1000 CREW WINTER PREP FACTORY CHOICE 49S &
- 2020 RANGER 1000 PS CREW FS
- 2020 RANGER 1000XP CREW PS MUD
- 2020 RANGER 1000XP CREW PS TX CA

Always refer to your vehicle's owner's manual for specific compatibility and installation instructions.

2. INSTALLATION (SETUP)

Installation of the Polaris Air Filter (Part 7082265) typically involves replacing the existing air filter in your vehicle's airbox. While the process is generally straightforward, it is crucial to consult your specific vehicle's owner's manual for detailed, step-by-step instructions and safety precautions.

General Steps (Consult Owner's Manual for specifics):

1. Locate the airbox: The airbox is usually found under the hood or seat, depending on your Polaris model.
2. Open the airbox: Unclip or unscrew the cover of the airbox.
3. Remove the old filter: Carefully remove the old air filter, noting its orientation.
4. Clean the airbox: Inspect the inside of the airbox for any debris or dust and clean it thoroughly before installing the new filter.
5. Install the new filter: Insert the new Polaris Air Filter (Part 7082265) into the airbox, ensuring it is seated correctly and oriented as the old filter was.
6. Close the airbox: Securely reattach the airbox cover, ensuring all clips or screws are fastened to prevent air leaks.

Important: Ensure the engine is off and cool before attempting any maintenance. Wear appropriate safety gear.

3. MAINTENANCE

Regular maintenance of your air filter is vital for the longevity and performance of your Polaris vehicle. A clogged air filter can significantly reduce engine efficiency and lead to premature wear.

Polaris recommends changing your air filter at the specified intervals outlined in your vehicle's owner's manual. These intervals may be shorter if your vehicle operates under severe conditions, such as dusty or muddy environments.

Recommended Replacement Period:

- Every 100 hours of operation
- Every 1,000 miles
- Annually

(Refer to your owner's manual for specific recommendations for your model.)



REPLACE FILTERS

EVERY 100 HOURS, 1000 MILES
OR ANNUALLY (PER OWNER'S MANUAL)

ALWAYS EXAMINE THE AIR FILTER

during pre-ride inspection as replacement could be needed
at different hour interval depending on your type of riding

Image: A hand is shown replacing an air filter in a Polaris vehicle. The image emphasizes the importance of regular filter replacement, stating "Replace Filters Every 100 hours, 1000 miles or Annually (per owner's manual)." It also advises to "Always examine the air filter during pre-ride inspection as replacement could be needed at different hour interval depending on your type of riding."

Inspection: Always examine the air filter during pre-ride inspections. Depending on your riding conditions and environment, replacement may be needed more frequently than the standard intervals.

4. TROUBLESHOOTING

While the air filter itself does not typically require troubleshooting, issues related to a clogged or improperly installed filter can manifest as vehicle performance problems.

Symptoms of a Clogged Air Filter:

- Reduced engine power or acceleration
- Decreased fuel efficiency
- Engine misfires or rough idling
- Black smoke from the exhaust (in some cases)
- Unusual engine noises

If you experience any of these symptoms, inspect your air filter immediately. If the filter appears dirty or

damaged, replace it with a new Polaris Air Filter (Part 7082265). Ensure the new filter is installed correctly and the airbox is sealed properly.

Note: If symptoms persist after replacing the air filter, consult a qualified service technician.

5. SPECIFICATIONS

Attribute	Detail
Brand	Polaris
Model Number	7082265
Manufacturer Part Number	7082265
OEM Part Number	7082265
Product Dimensions	24.13 x 13.97 x 13.97 cm (9.5 x 5.5 x 5.5 inches)
Item Weight	227 g (0.5 lbs)
Fit Type	Vehicle Specific Fit
Safety Rating	DOT Certified
Date First Available	February 14, 2018

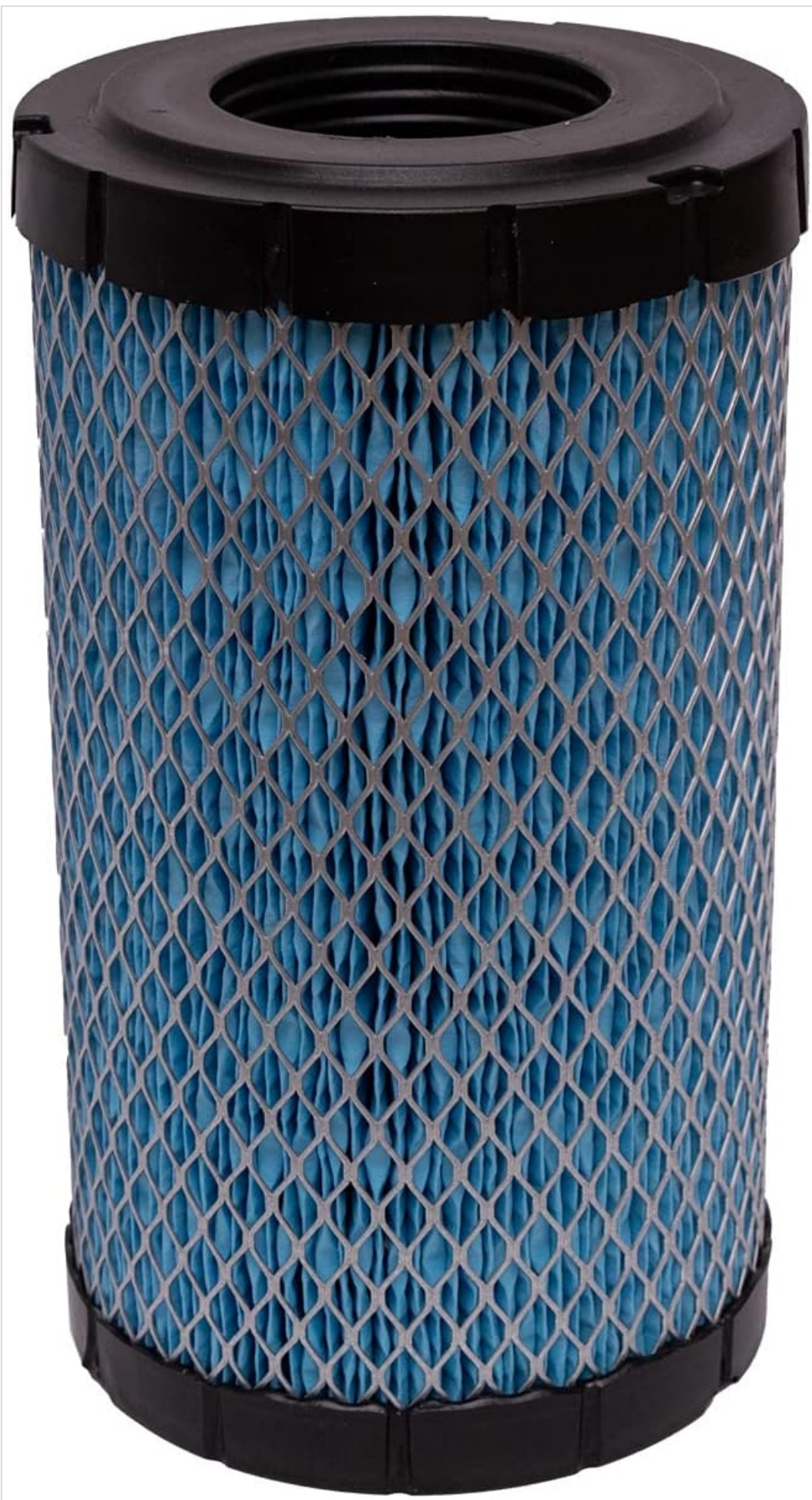


Image: Front view of the Polaris Air Filter, Part 7082265. It features a blue pleated filter material encased in a metal mesh, with black rubber caps on both ends.

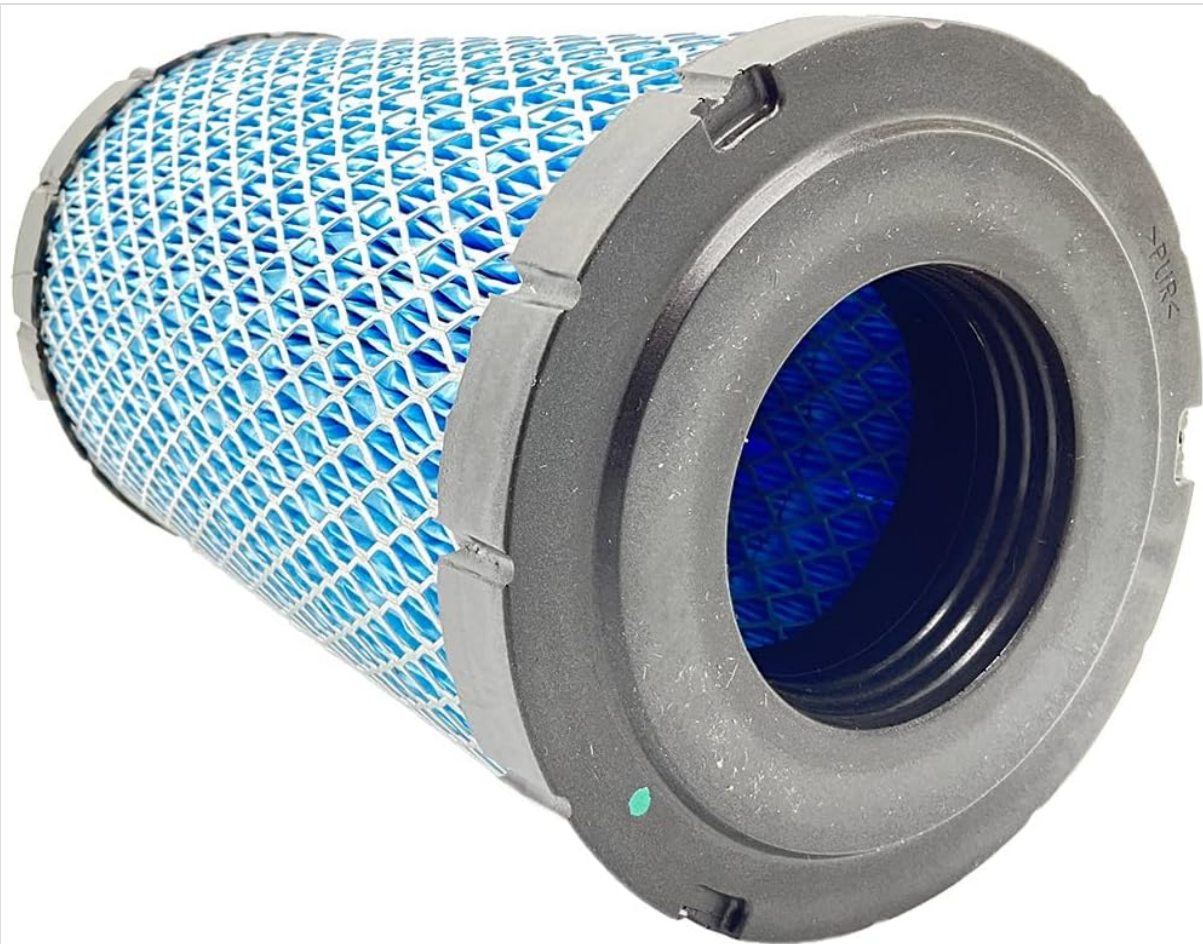


Image: Bottom view of the Polaris Air Filter, Part 7082265, showing the circular opening and the black rubber seal with "PLR" molded into it.





Image: Side view of the Polaris Air Filter, Part 7082265, highlighting the blue pleated filter material and the protective metal mesh.

6. SAFETY INFORMATION

Always prioritize safety when performing maintenance on your vehicle. Refer to your vehicle's owner's manual for comprehensive safety guidelines.


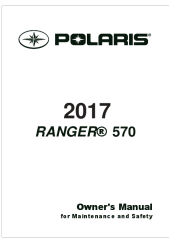




- Ensure the vehicle is turned off and the engine is cool before beginning any work.
- Wear appropriate personal protective equipment, such as gloves and eye protection.
- Keep hands and clothing clear of moving parts if the engine is running for testing purposes (though not typically required for air filter replacement).
- Dispose of old filters responsibly according to local regulations.

7. WARRANTY AND SUPPORT

Information regarding the specific warranty for the Polaris Air Filter Part 7082265 was not available in the provided product data. For warranty details and customer support, please refer to the official Polaris website or contact your authorized Polaris dealer.

You can visit the official Polaris store for more information: [Polaris Store on Amazon.ca](#)

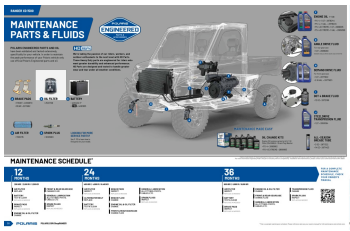
Related Documents - 7082265

	<p>2011 Polaris Ranger RZR / RZR S / RZR 4 Service Manual</p> <p>Official service manual for 2011 Polaris Ranger RZR, RZR S, and RZR 4 models, detailing maintenance, repair procedures, and technical specifications for optimal performance and longevity.</p>
	<p>2017 Polaris RANGER 570 Owner's Manual: Maintenance and Safety Guide</p> <p>Comprehensive owner's manual for the 2017 Polaris RANGER 570, detailing safe operation, maintenance, troubleshooting, and specifications for this utility vehicle. Includes safety guidelines and warranty information.</p>
	<p>Polaris Ranger XP 900 Plow Mount Installation Instructions</p> <p>Step-by-step installation guide for the Kappers Fabricating Plow Mount (Part # 105475) for the Polaris Ranger XP 900. Includes kit components and mounting instructions.</p>
	<p>Polaris Sportsman Maintenance Schedule</p> <p>Detailed maintenance schedule for Polaris Sportsman ATVs, covering essential service intervals for engine oil, coolant, drivetrain, brakes, tires, air filter, and more. Keep your Polaris Sportsman running optimally with this comprehensive guide.</p>
	<p>Polaris Ranger 2021 Accessories and Apparel Catalog</p> <p>Discover the extensive 2021 Polaris Ranger accessories and apparel catalog. Enhance your utility side-by-side with a wide array of Polaris Engineered accessories for comfort, performance, and utility, alongside a selection of branded apparel.</p>
	<p>2014 Polaris Ranger Diesel / Ranger Crew Diesel Owner's Manual</p> <p>This owner's manual provides essential information for the safe operation, maintenance, and care of the 2014 Polaris Ranger Diesel and Ranger Crew Diesel vehicles. It includes safety precautions, operating instructions, maintenance guidelines, and troubleshooting tips.</p>

[\[pdf\]](#) User Manual Owner's Manual

MAINTENANCE PARTS FLUIDS 21 hours ago — Please reference and use your owners manual for proper maintenance vehicle care A STEELDRIVE TRANSMISSION FLUID » 1 QT 2891094 DEMAND DRIVE 2025 ranger pga maintenace v cf2aedc0 cdn1 polaris globalassets orv root schedules ||| RANGER XD 1500 MAINTENANCE PARTS FLUIDS POLARIS ENGINEERED PARTS AND OIL have been validated and ... 2522498 XP KINETIC DOES NOT HAVE AN OIL FILTER I B D BATTERY 4014132-P 4081855 E AIR FILTER **7082265** 1000/ XP 1000 7083113 1000/ XP 1000 F SPARK PLUGS 1000 3023571 XP 1000 3022662 LOOKI...

lang:en **score:24** filesize: 2.23 M page_count: 5 document date: 2024-07-09



[\[pdf\]](#) Accessories Catalog

windshield The Polaris® testing process is rigorous and unforgiving We put vehicle accessories through extreme conditions both in the lab 2018 orv pga ranger crew xp1000 my19 catalog us lr2 v 5ae8c49d cdn1 polaris globalassets covers US VERSION THE NEW STANDARD FOR PASSENGER UTILITY ACCESSORIES, PARTS APPAREL ENGINEERED WITH EXC ... DTM PARTS POLARIS MAINTENANCE PARTS Brake Pad Kit Air Filter Oil Filter Drive Belt PART # 2205949 **7082265** 2540086 3211186 POLARIS ENGINEEREDTM BELTS TESTED, PERFECTED Maintenance is the key to keep...

lang:en **score:16** filesize: 12.49 M page_count: 15 document date: 2018-04-13

