

## Manuals+

[Q & A](#) | [Deep Search](#) | [Upload](#)

manuals.plus /

> [thermoflow](#) /

> [Thermoflow UT10N2 2.5 Gallon Electric Mini Tank Water Heater User Manual](#)

## thermoflow UT10N2

# Thermoflow UT10N2 2.5 Gallon Electric Mini Tank Water Heater User Manual

Model: UT10N2 | Brand: thermoflow

## INTRODUCTION

---

This manual provides essential information for the safe installation, operation, and maintenance of your thermoflow UT10N2 2.5 Gallon Electric Mini Tank Water Heater. Please read it thoroughly before use and retain it for future reference. This point-of-use water heater is designed to provide immediate hot water, reducing wait times and conserving water.



*Image: Front view of the thermoflow UT10N2 2.5 Gallon Electric Mini Tank Water Heater, a compact white unit with a control dial on top.*

## **IMPORTANT SAFETY INFORMATION**

---

Failure to follow these safety instructions could result in property damage, serious injury, or death. Read and understand all warnings and instructions before installing or operating this water heater.

- **Electrical Safety:** This appliance must be properly grounded. Do not use extension cords. Ensure the electrical supply matches the unit's requirements (120V, 1.5kW, 13A). Disconnect power before any service or maintenance.
- **Water Pressure and Temperature:** A Temperature and Pressure (T&P) relief valve must be installed on the cold water inlet line. Do not block or tamper with the T&P relief valve. Ensure the water heater is completely filled with water before connecting to power to prevent dry-firing and damage.
- **Installation Environment:** Install the unit in a location protected from freezing temperatures. Ensure adequate ventilation and clearances for service. Do not install where leaks could cause damage to the

surrounding area.

- **General Precautions:** Do not operate if the unit is damaged or malfunctioning. This appliance is not intended for use by persons (including children) with reduced physical, sensory, or mental capabilities, or lack of experience and knowledge, unless they have been given supervision or instruction.

## PACKAGE CONTENTS

Carefully unpack the box and verify that all components are present and undamaged before beginning installation:

- 1 x thermoflow UT10N2 2.5 Gallon Electric Mini Tank Water Heater
- 2 x 1/2 inch Brass Bushings
- 1 x Instruction Manual (this document)
- 1 x Warranty Card
- Additional accessories such as a water relief valve, gaskets, and a 1/2" NPT connector may be included depending on the specific package.



*Image: Contents of the product package, showing the water heater, instruction manual, warranty card, and various plumbing connectors.*

## INSTALLATION INSTRUCTIONS

The thermoflow UT10N2 is designed for point-of-use installation, typically under a sink or on the floor. Ensure the installation location is protected from freezing temperatures and has adequate drainage.

## 1. Site Selection

- Choose a location close to the hot water tap to minimize heat loss and waiting time.
- Ensure the surface can support the weight of the water heater when full (approximately 35 lbs).
- Maintain required clearances around the unit for ventilation and service access.

## 2. Plumbing Connections

The unit features 1/2 inch NPT water connections. The blue port is for cold water inlet, and the red port is for hot water outlet.

**Important:** A Temperature and Pressure (T&P) relief valve must be installed on the cold water inlet line, as shown in the diagram below, to prevent excessive pressure and temperature buildup. Use thread sealant on all threaded connections.



*Image: Detailed diagram illustrating the proper connection of the water relief valve to the cold water inlet (blue port) and the hot water outlet (red port) of the water heater.*

Connect the cold water supply line to the T&P valve, then connect the T&P valve to the blue inlet port on the water heater. Connect the hot water outlet (red port) to the hot water faucet line.



*Image: Plumbing diagrams for connecting the mini tank water heater to a single faucet or in a booster configuration with an existing water heater.*

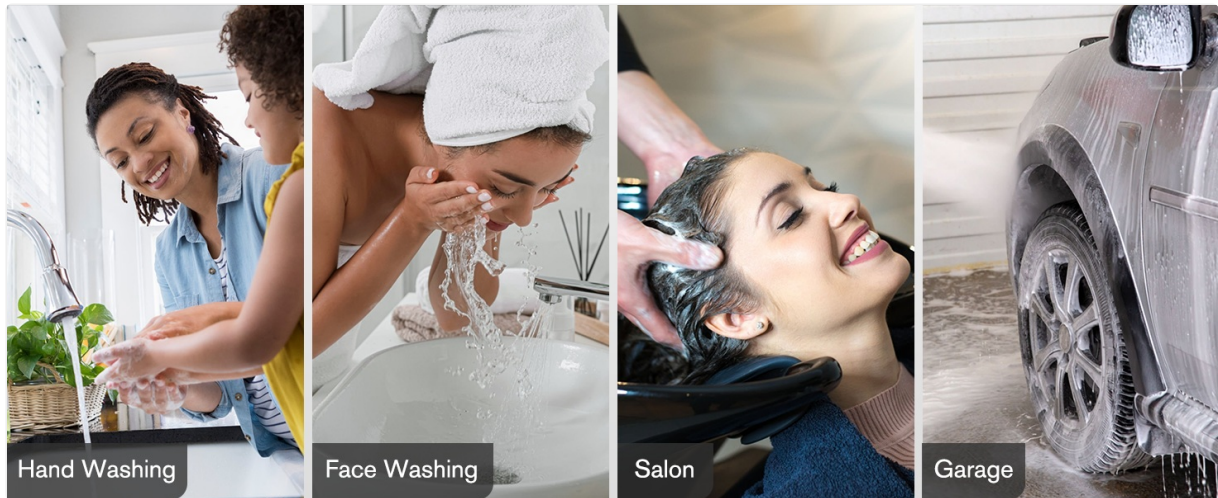
## 3. Filling the Tank

Before connecting power, open a hot water faucet in your system to allow air to escape. Then, open the cold water supply valve to the water heater. The tank is full when a steady stream of water flows from the hot water faucet.

**Do not apply power until the tank is completely filled.**

## 4. Electrical Connection

The thermoflow UT10N2 operates on 120 Volts and requires a 1.5 kW power supply. It comes with a 2.6ft cord for plug-in use. Ensure the electrical outlet is properly grounded and rated for the appliance's power requirements (13A nominal current). Avoid using extension cords.



*Image: The water heater connected to a standard electrical outlet, illustrating its plug-in design for under-sink installation.*

## OPERATION

---

Once installed and filled with water, plug in the water heater. The unit features an adjustable temperature setting dial and a working indicator light.

### Temperature Adjustment

The temperature control dial allows you to set the desired water temperature between 45°F and 167°F. The "Energy-Saver Mode" typically sets the temperature to approximately 165°F ( $\pm 75^{\circ}\text{C}$ ). The red working indicator light illuminates when the heating element is active and turns off once the set temperature is reached.

# Adjustable Temperature Setting

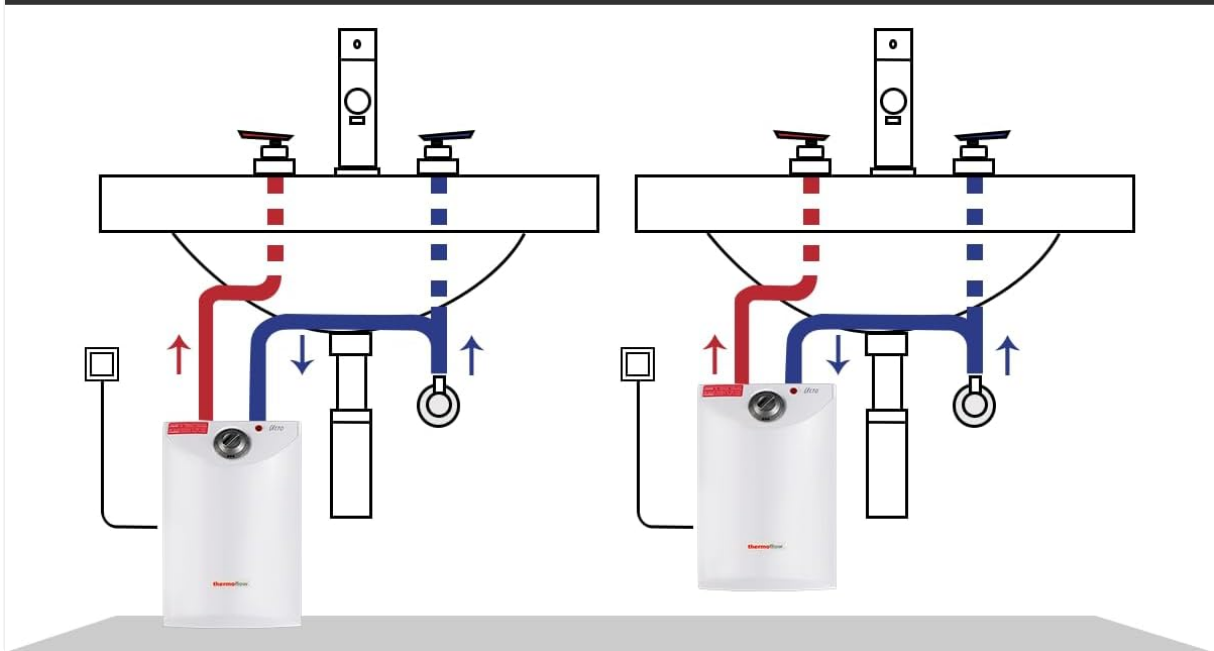
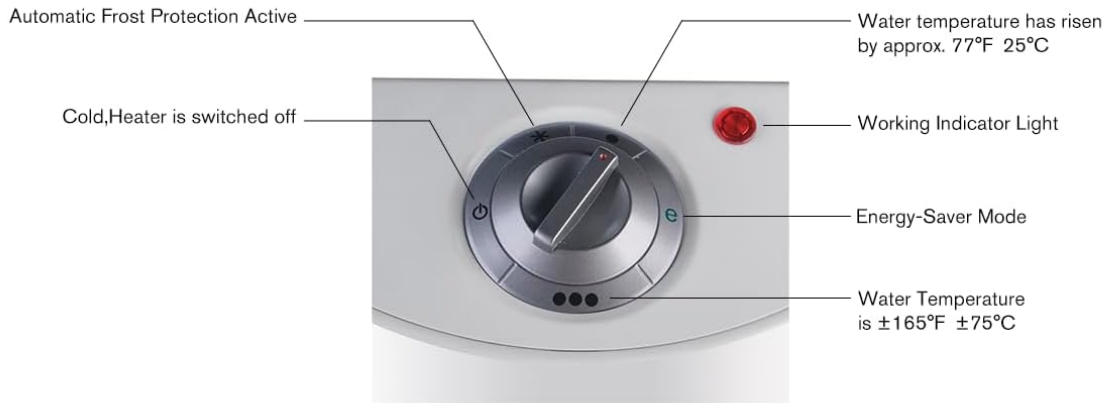


Image: A detailed view of the temperature adjustment dial and working indicator light on the water heater, showing various temperature settings.

Your browser does not support the video tag.

Video: A short demonstration showing the thermoflow UT10N2 water heater and the adjustment of its temperature dial, indicating operational control.

## MAINTENANCE

Regular maintenance ensures optimal performance and longevity of your water heater. Always disconnect power before performing any maintenance.

- **Temperature and Pressure Relief Valve:** Manually operate the T&P relief valve at least once a year to ensure it is functioning correctly. Follow the manufacturer's instructions for the valve. This helps prevent pressure buildup.
- **Draining the Tank:** If the unit will be unused for an extended period or if there is a risk of freezing, drain the tank completely. Disconnect power, close the cold water inlet valve, open a hot water faucet, and drain the tank through the T&P valve or a dedicated drain valve if installed.
- **Cleaning:** Periodically wipe the exterior of the unit with a damp cloth. Do not use abrasive cleaners or solvents.

## TROUBLESHOOTING

If you experience issues with your thermoflow UT10N2 water heater, consult the following table:

Problem	Possible Cause	Solution
No hot water / Unit not heating	<ul style="list-style-type: none"> <li>No power to the unit.</li> <li>Thermostat set too low.</li> <li>Thermal cut-off (reset button) tripped.</li> <li>Heating element failure.</li> </ul>	<ul style="list-style-type: none"> <li>Check power supply and circuit breaker.</li> <li>Adjust thermostat to a higher setting.</li> <li>Press the reset button (often located on the back or side, may require a pointed object).</li> <li>Contact customer support for service if other solutions fail.</li> </ul>
Water not hot enough	<ul style="list-style-type: none"> <li>Thermostat set too low.</li> <li>Inadequate recovery time for demand.</li> <li>Unit size insufficient for continuous demand.</li> </ul>	<ul style="list-style-type: none"> <li>Increase temperature setting.</li> <li>Allow more time for the unit to reheat between uses.</li> <li>Evaluate if a larger capacity unit is needed for your specific usage patterns.</li> </ul>
Water leaking from unit or connections	<ul style="list-style-type: none"> <li>Loose plumbing connections.</li> <li>Faulty T&amp;P relief valve.</li> <li>Internal tank leak.</li> </ul>	<ul style="list-style-type: none"> <li>Tighten connections (do not overtighten). Use thread sealant.</li> <li>Inspect and replace T&amp;P valve if necessary.</li> <li>Disconnect power and water supply immediately; contact customer support for internal leaks.</li> </ul>

If the problem persists after attempting these solutions, please contact thermoflow customer support.

## SPECIFICATIONS

Feature	Detail
Model	UT10N2
Capacity	2.5 Gallons (Nominal 2.6 Gallons)
Dimensions (H x W x D)	18" x 12.2" x 11"
Weight (Empty)	14 lbs
Voltage	120 Volts
Wattage	1500 Watts (1.5 kW)
Nominal Current	13 Amps
Temperature Range	45°F - 167°F
Maximum Operating Pressure	150 PSI
Water Connections	1/2 inch NPT
Efficiency	Up to 98%
Mounting Type	Floor mount or under sink mount
Cord Length	2.6 ft

Feature	Detail
Certification	CE/CB/GS

## WARRANTY AND SUPPORT

The thermoflow UT10N2 Electric Mini Tank Water Heater comes with a **2-year limited warranty**. Please refer to the included Warranty Card for detailed terms and conditions regarding coverage and claims.

For technical assistance, troubleshooting, or warranty claims, please contact thermoflow customer support.

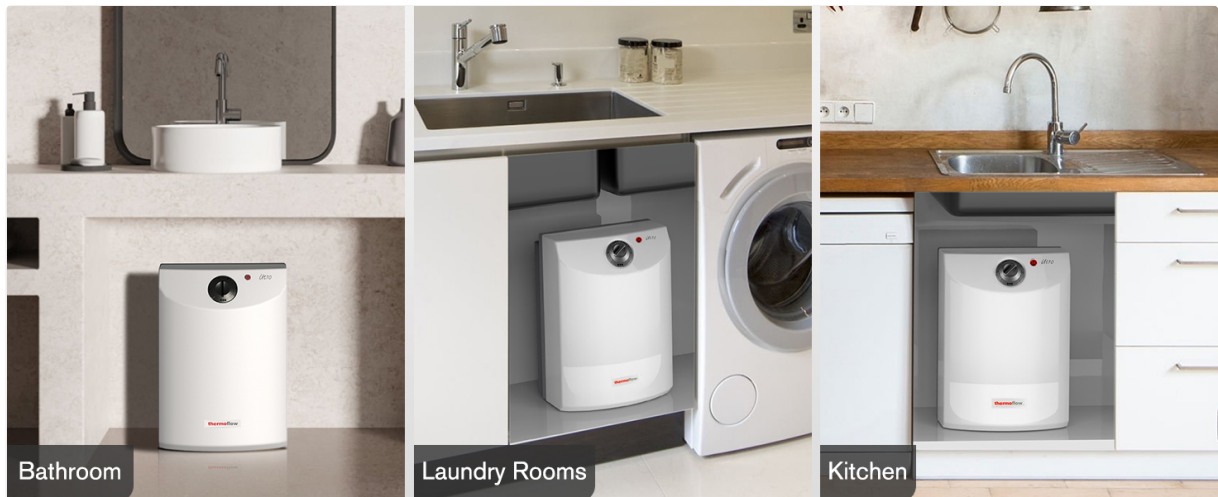
Contact information can typically be found on the warranty card or the official thermoflow website.

*Note: Improper installation, failure to follow safety guidelines, or unauthorized modifications may void your warranty.*

## TYPICAL USAGE SCENARIOS

The compact design and point-of-use functionality of the thermoflow UT10N2 make it suitable for various applications where immediate hot water is desired:

- **Kitchens:** Provides instant hot water for washing dishes, hands, and food preparation.
- **Bathrooms:** Ideal for hand washing, shaving, and other personal hygiene needs.
- **Laundry Rooms:** Supplements hot water for small tasks or pre-treating garments.
- **Offices & RVs:** Offers a convenient and efficient hot water supply in compact or mobile spaces.



*Image: Examples of the water heater installed discreetly in various home environments such as a bathroom, laundry room, and kitchen, demonstrating its versatility.*



*Image: Various applications of hot water, including hand washing, face washing, use in a salon, and car washing, highlighting the versatility of the water heater for different needs.*