

[Manuals.plus](#) /

> [MICROSEVEN](#) /

> MICROSEVEN 4K/8MP Ultra HD Duo 2 WiFi IP Camera User Manual (Model M7B4K-WSAA)

MICROSEVEN M7B4K-WSAA

MICROSEVEN 4K/8MP Ultra HD Duo 2 WiFi IP Camera User Manual

Model: M7B4K-WSAA

1. PRODUCT OVERVIEW

The MICROSEVEN M7B4K-WSAA is an outdoor IP camera featuring 4K/8MP Ultra HD resolution, dual-band WiFi (2.4/5 GHz), two-way audio, and advanced motion detection capabilities. It is designed for robust outdoor surveillance with an IP66 waterproof rating and supports various recording and integration options.



Figure 1.1: Overview of the MICROSEVEN 4K/8MP Ultra HD Duo 2 WiFi IP Camera.

2. WHAT'S IN THE BOX

Verify that all components are present in the package:

- MICROSEVEN 4K/8MP IP Camera
- Power Adapter
- Ethernet Cable
- Mounting Screws and Anchors
- Quick Start Manual
- Waterproof Connector Kit
- Hex Key



Figure 2.1: Included accessories and camera unit.

3. SETUP AND INSTALLATION

3.1 Initial Camera Discovery and Login

Before physical installation, it is recommended to connect the camera to your network via an Ethernet cable and power it on. Use the Microseven Cam Locator software on your PC to find the camera on your local network and access its web interface.

Video 3.1: Instructions on how to find and set up the camera before installation using the Cam Locator tool.

The default username is 'admin' and the default password is 'password' (all lowercase). It is strongly recommended to change these credentials after initial setup for security purposes.

3.2 Software Download

To manage your camera, download the Microseven software for Windows or macOS, or the mobile app for iOS/Android.

Video 3.2: Guide on downloading Microseven software for your computer.

3.3 WiFi Setup

Configure the camera's WiFi settings for wireless operation. Ensure the camera is initially connected via Ethernet for this process.

Video 3.3: Detailed steps for setting up WiFi on your Microseven HD camera before installation.

3.4 Mobile App Setup

Download the Microseven app from your device's app store. Create an account if you are a new user, then add your camera

by scanning the QR code or manually entering the camera ID and PIN.



Figure 3.4: The Microseven software platform supports MacOS, Windows, iOS, and Android devices, as well as Alexa and ONVIF.

3.5 Amazon Alexa Integration

Integrate your Microseven camera with Amazon Alexa for voice control and live streaming on compatible devices like Echo Show or Echo Spot.

Video 3.5: Instructions for connecting your Microseven security camera with Alexa Smart Home.

4. OPERATING INSTRUCTIONS

4.1 Live View and Playback

Access live video streams and recorded footage from your PC, smartphone, or tablet using the Microseven app or web interface. The camera supports 4K/8MP Ultra HD resolution for clear viewing.

SOFTWARE PLATFORM



Figure 4.1: The Camera Management System (CMS) allows viewing up to 16 cameras on one screen.

4.2 Two-Way Audio

The camera features a built-in amplified microphone and speaker, enabling two-way communication. You can listen and talk back through the M7 App on your phone or tablet, or via M7 Software on your PC.

4.3 Motion Detection and Alerts

The camera offers intelligent human/vehicle motion detection, reducing false alerts. You can configure specific detection zones and set up various alert actions.

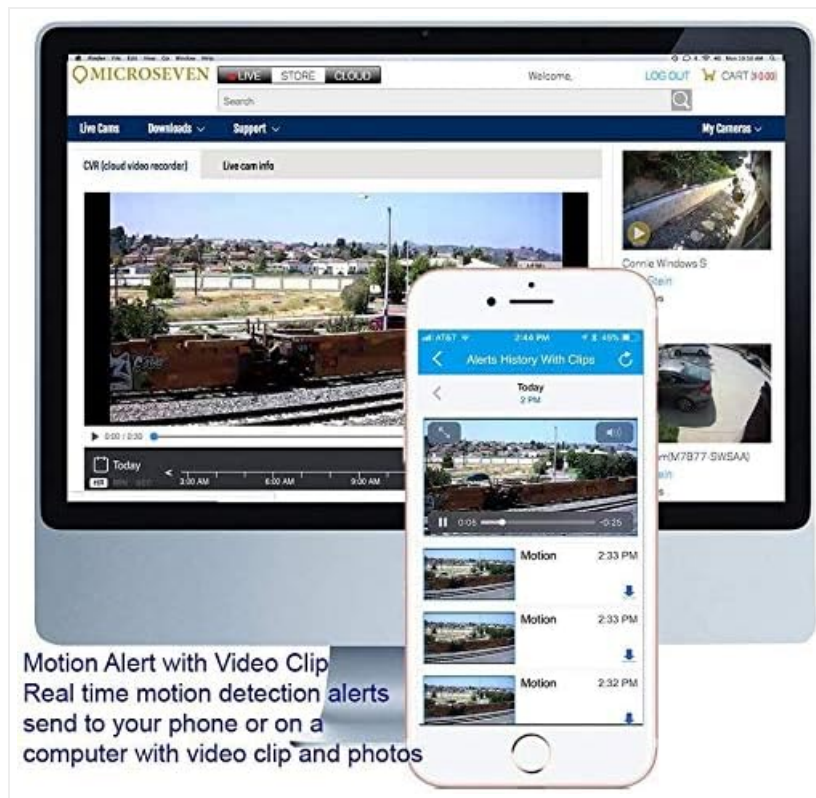


Figure 4.3: Real-time motion detection alerts with video clips sent to your phone or computer.

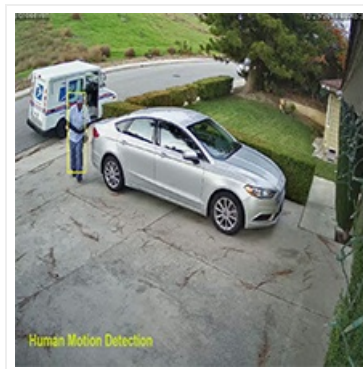


Figure 4.4: The camera features Human Motion Detection, WiFi, and Power over Ethernet (POE) capabilities.

Video 4.5: Guide on how to set up motion alerts settings in your Microseven HD camera.

4.4 Recording Options

Recordings can be saved 24/7, on a schedule, or triggered by motion. Storage options include a microSD card (up to 256GB, not included), Microseven Cloud, Microseven NVR, or an FTP server.

4.5 Night Vision

The camera is equipped with 18 IR LEDs, providing up to 100ft of clear night vision. The M7 Software allows manual disabling of IR lights and modification of camera properties remotely.



Figure 4.6: The camera provides clear vision both during the day and at night.

5. MAINTENANCE

The camera features an all-metal casing with an IP66 waterproof rating, ensuring durability in various outdoor conditions. Regular cleaning of the lens may be required to maintain optimal image clarity. Firmware updates are provided by Microseven to enhance features and security.

6. TROUBLESHOOTING

6.1 Connectivity Issues

- Ensure the camera is powered on and the power adapter is securely connected.
- For initial setup, ensure the Ethernet cable is properly connected to both the camera and the router.
- Verify that your WiFi network is operational and the camera is within range.
- If using WiFi, double-check the entered WiFi password for accuracy.
- Use the Microseven Cam Locator to confirm the camera's presence on the network.

6.2 Image Quality Issues

- Clean the camera lens with a soft, dry cloth.
- Ensure there are no obstructions in the camera's field of view.
- Check network bandwidth if streaming quality is poor.

6.3 Motion Detection Not Triggering

- Verify that motion detection is enabled in the camera settings.
- Adjust the sensitivity level of the motion detection.
- Ensure detection zones are correctly configured and cover the desired areas.

7. SPECIFICATIONS

Feature	Specification
Model Number	M7B4K-WSAA
Resolution	4K/8MP Ultra HD (3840x2160)
Sensor	Sony CMOS Sensor
Lens	2.8mm, 150° Wide-Angle

Connectivity	Dual-Band WiFi (2.4/5 GHz), Ethernet
Night Vision Range	Up to 100 ft (18 IR LEDs)
Audio	Two-Way Talk (Amplified Mic & Speaker)
Storage	MicroSD (up to 256GB, not included), Cloud, NVR, FTP
Weatherproof Rating	IP66
Motion Detection	Human Motion Detection, Zone-based
Compatibility	Alexa, Blue Iris, Milestone, ZoneMinder, NAS, ONVIF 2.0
Power Source	Corded Electric (5 watts)
Material	Metal
Item Dimensions	6 x 5 x 4 inches
Item Weight	1 Pound

8. WARRANTY AND SUPPORT

MICROSEVEN provides free software for Windows and MacOS, along with free apps for iOS and Android. These tools offer potent customizable configuration features within the camera firmware. For support, refer to the official Microseven website or contact their customer service. Information regarding specific warranty periods can typically be found on the product packaging or the official Microseven website.