

## Manuals+

[Q & A](#) | [Deep Search](#) | [Upload](#)

[manuals.plus](#) /

› [BONTEC](#) /

› [BONTEC TV Wall Mount Bracket User Manual](#)

## BONTEC 236

# BONTEC TV Wall Mount Bracket Instruction Manual

Model: 236

### PRODUCT OVERVIEW

The BONTEC TV Wall Mount Bracket is designed to securely hold most 13-30 inch LCD and LED screens, with a maximum weight capacity of 25kg. This full-motion bracket provides versatile viewing options, allowing for 360° rotation, +/-150° tilt, and +/-300° swivel adjustments.



Image: The BONTEC TV Wall Mount Bracket, showcasing its compact and robust design.

Key features of this wall mount include:

- **Full Motion Adjustment:** Offers 360° rotation,  $\pm 150^\circ$  tilt, and  $\pm 300^\circ$  swivel for optimal viewing angles.
- **Strong and Secure Design:** Constructed from high-quality cold-rolled steel, supporting screens up to 25kg.
- **Easy Installation:** Simple 3-step installation process with all necessary hardware included.
- **Universal Compatibility:** Fits most 13-30 inch LED, LCD, and Plasma TVs or monitors with VESA 75x75mm and 100x100mm patterns.
- **Space-Saving Design:** Extends only 9.5cm from the wall, providing a sleek, low-profile appearance.

## SAFETY INFORMATION

Please read all instructions carefully before installation and use. Improper installation may result in serious injury or damage to your equipment.

- Ensure the wall structure can safely support the combined weight of the mount and the display.
- Do not exceed the maximum weight capacity of 25kg (55lbs).
- This mount is suitable for wood studs, brick, and concrete walls. **It is not suitable for drywall**

**installation alone.**

- Use a stud finder to locate wood studs accurately.
- Always use a spirit level to ensure the mount is installed straight.
- Keep children and pets away during installation.
- Tighten all screws firmly but do not overtighten.
- If you are unsure about any part of the installation process, consult a qualified professional.

**PACKAGE CONTENTS**

Please verify that all components are present and undamaged before beginning installation. The package typically includes:

- Wall Mount Bracket Assembly
- VESA Plate
- Wall Mounting Hardware (screws, anchors)
- TV Mounting Hardware (various screws, washers, spacers for VESA 75x75mm and 100x100mm)
- Instruction Manual

**SPECIFICATIONS**

Feature	Specification
Brand	BONTEC
Model Number	236
Material	Alloy Steel
Color	Black
Compatible Screen Size	13 - 30 Inches
Maximum Weight Capacity	25 kg (55 lbs)
VESA Compatibility	75x75mm, 100x100mm
Movement Type	Full Motion (Tilt, Swivel, Rotation)
Tilt Angle	+/- 15 Degrees
Swivel Angle	+/- 30 Degrees
Rotation	360 Degrees
Distance from Wall	9.5 cm
Product Dimensions	10 x 10 x 5 cm
Item Weight	657.71 g

# Product Dimensions



Image: Detailed product dimensions of the BONTEC TV Wall Mount Bracket.

## SETUP AND INSTALLATION

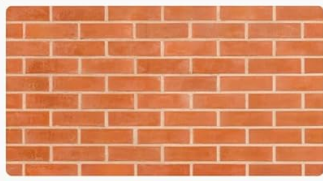
### Pre-Installation Checklist

- **Wall Type:** Ensure your wall is suitable (wood stud, brick, or concrete). Do not install on drywall alone.
- **Screen Size & Weight:** Verify your TV/monitor is between 13-30 inches and weighs no more than 25kg.
- **VESA Pattern:** Check your TV's VESA pattern (mounting holes on the back) is 75x75mm or 100x100mm.
- **Tools Required:** Drill, spirit level, screwdriver, pencil, measuring tape.

# Applicable Wall Types



Wood Stud



Brick Wall



Concrete Wall



Image: Illustration of suitable wall types for installation: wood stud, brick wall, and concrete wall. A warning indicates that installation on drywall alone is not recommended.

## Installation Steps

1. **Mark Drilling Points:** Position the wall plate on your desired wall location. Use a spirit level to ensure it is perfectly horizontal. Mark the drilling points with a pencil. For wood studs, drill pilot holes. For brick or concrete, drill holes and insert wall anchors. The image below shows the typical marking and drilling process.

# Easy to Assemble

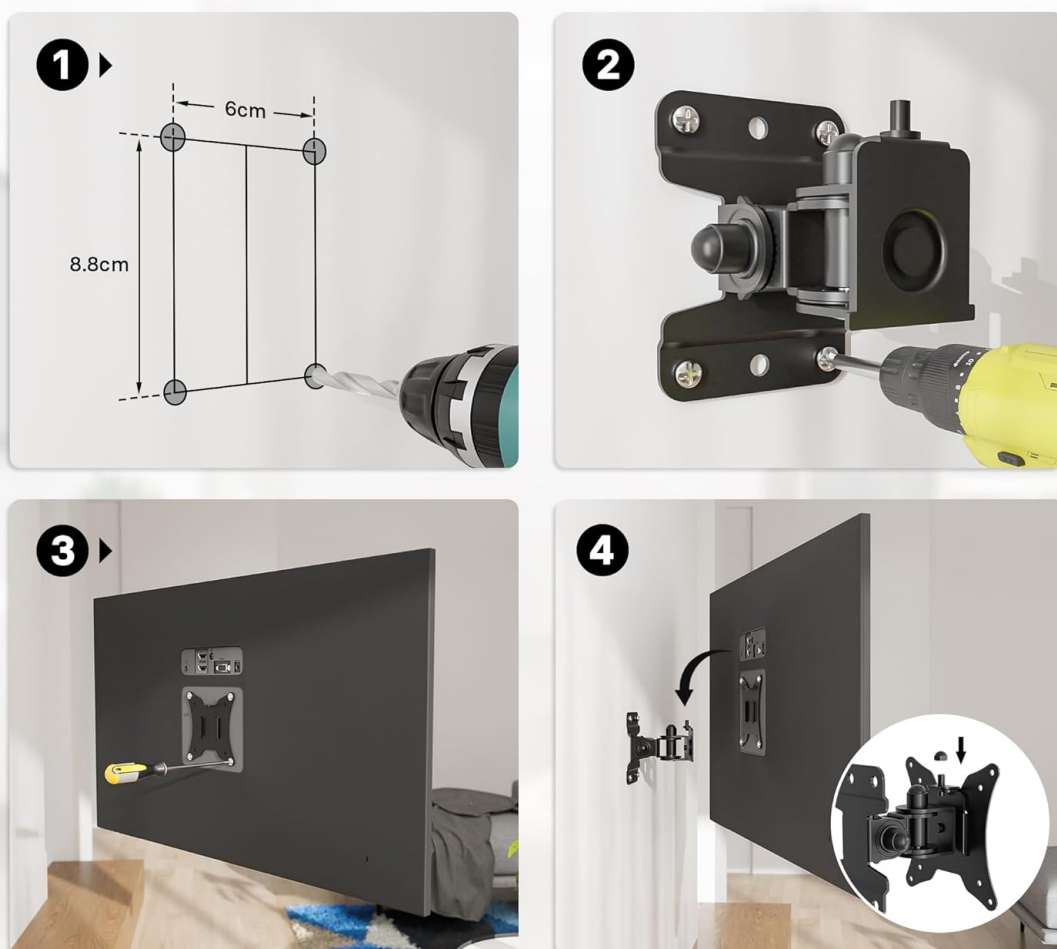


Image: Step-by-step guide for easy assembly, showing marking drill points and attaching the wall mount.

2. **Attach Wall Plate:** Secure the wall plate to the wall using the provided screws. Ensure it is firmly attached and stable.
3. **Attach VESA Plate to TV:** Carefully place your TV face down on a soft, clean surface. Attach the VESA plate to the back of your TV using the appropriate screws and washers from the provided hardware kit. Ensure the screws are tightened securely.
4. **Mount TV onto Wall Plate:** With assistance, carefully lift the TV with the attached VESA plate. Align the VESA plate with the wall plate and slide it down until it locks into place. Secure the safety nut at the top to prevent accidental dislodgement.

## OPERATING INSTRUCTIONS

Once installed, your BONTEC TV Wall Mount Bracket allows for various adjustments to achieve your optimal viewing experience:

- **Tilt Adjustment (+/-150):** Loosen the tilt knob/screws on the side of the VESA plate, adjust the screen to your desired vertical angle, and then re-tighten the knob/screws to secure the position.
- **Swivel Adjustment (+/-300):** Gently push or pull the screen horizontally to swivel it left or right. The arm will articulate to allow for this movement.
- **Rotation (3600):** The VESA plate allows for full 360-degree rotation, enabling you to switch between landscape and portrait orientations. Simply rotate the screen to the desired orientation.

# Full Motion Adjustment



Image: Visual representation of the full motion adjustment capabilities: 360° rotation,  $\pm 15^\circ$  tilt, and  $\pm 30^\circ$  swivel.

## MAINTENANCE

Regular maintenance helps ensure the longevity and safe operation of your wall mount:

- **Cleaning:** Wipe the mount with a soft, dry cloth. Avoid using abrasive cleaners or solvents.
- **Periodic Checks:** Every few months, check all screws and bolts to ensure they remain tight. Retighten if necessary.
- **Movement Check:** Periodically test the tilt, swivel, and rotation mechanisms to ensure they move smoothly. If any part feels stiff, apply a small amount of silicone-based lubricant to the moving joints.

## TROUBLESHOOTING

If you encounter issues with your BONTEC TV Wall Mount, refer to the following common problems and solutions:

Problem	Possible Cause	Solution
---------	----------------	----------




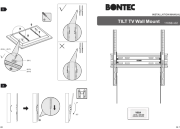
Problem	Possible Cause	Solution
TV sags or tilts downwards	Tilt mechanism not tightened sufficiently.	Ensure the tilt knob/screws are fully tightened. If the TV is heavy, you may need to apply more force to secure it.
Mount feels unstable on the wall	Improper wall anchors or screws; wall not strong enough.	Re-check wall type and ensure appropriate anchors/screws were used. If unsure, consult a professional. Verify all wall mounting screws are tight.
Difficulty adjusting swivel or rotation	Joints are stiff or need lubrication.	Apply a small amount of silicone-based lubricant to the moving joints. Work the mechanism back and forth to distribute the lubricant.
TV does not fit the mount	Incorrect VESA pattern or screen size/weight.	Verify your TV's VESA pattern (75x75mm or 100x100mm) and ensure it is within the 13-30 inch size and 25kg weight limits.

### WARRANTY AND SUPPORT

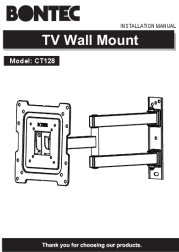
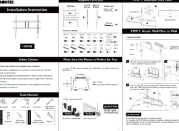
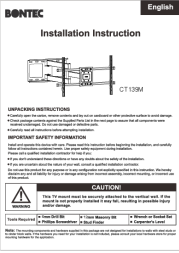
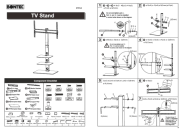
BONTEC products are manufactured to high quality standards. For specific warranty information, please refer to the warranty card included with your product or visit the official BONTEC website. If you require technical assistance or have questions regarding your product, please contact BONTEC customer support through their official channels.

For further information or to explore other BONTEC products, you may visit the [BONTEC Store on Amazon](#).

### Related Documents - 236

	<p><a href="#">BONTEC CT135B TV Wall Mount Installation Instructions</a></p> <p>Comprehensive installation guide for the BONTEC CT135B TV Wall Mount, covering unpacking, safety information, parts list, and step-by-step assembly for flat and curved screens on various wall types.</p>
	<p><a href="#">BONTEC 116SB-v02 TILT TV Wall Mount Installation Manual</a></p> <p>Comprehensive installation manual for the BONTEC 116SB-v02 TILT TV Wall Mount, detailing parts list and step-by-step instructions for wood stud and concrete wall mounting.</p>



 <p>The image shows the cover of the BONTEC CT128 TV Wall Mount Installation Manual. It features the BONTEC logo at the top, followed by 'INSTALLATION MANUAL', 'TV Wall Mount', and 'Model: CT128'. Below this is a technical diagram of the wall mount. At the bottom, it says 'Thank you for choosing our products.'</p>	<p><a href="#">BONTEC CT128 TV Wall Mount Installation Manual</a></p> <p>Comprehensive installation manual for the BONTEC CT128 TV Wall Mount, covering unpacking, safety, parts, compatibility, and step-by-step mounting instructions for flat and curved TVs on various wall types.</p>
 <p>The image shows the cover of the BONTEC 118MB TV Wall Mount Installation Guide. It features a technical diagram of the wall mount and various installation steps.</p>	<p><a href="#">BONTEC 118MB TV Wall Mount Installation Guide</a></p> <p>This document provides comprehensive installation instructions and troubleshooting guidance for the BONTEC 118MB TV Wall Mount. Designed for most 37-82 inch LED, LCD, Plasma, Flat, and Curved TVs, it details safety precautions, required tools, parts list, step-by-step assembly, wall mounting procedures for wood studs and concrete, TV bracket attachment, hanging, removal, adjustment, and common solutions to installation issues.</p>
 <p>The image shows the cover of the BONTEC CT139M TV Wall Mount Installation Instruction. It features the BONTEC logo, 'English', 'Installation Instruction', and 'CT139M'. Below this is a technical diagram of the wall mount. At the bottom, it says 'Thank you for choosing our products.'</p>	<p><a href="#">BONTEC CT139M TV Wall Mount Installation Guide</a></p> <p>Comprehensive installation instructions for the BONTEC CT139M TV Wall Mount, covering unpacking, safety, compatibility checks, and step-by-step mounting procedures for various wall types and TV sizes.</p>
 <p>The image shows the cover of the BONTEC Universal Floor TV Stand Assembly Instructions. It features a technical diagram of the floor stand and various assembly steps.</p>	<p><a href="#">BONTEC Universal Floor TV Stand Assembly Instructions</a></p> <p>Comprehensive guide for assembling the BONTEC Universal Floor TV Stand, suitable for 30-70 inch TVs. Includes component checklist, step-by-step instructions, and safety tips.</p>