

Manuals+

[Q & A](#) | [Deep Search](#) | [Upload](#)

manuals.plus /

› [Liberty](#) /

› [Liberty Elegant Luxe 3-3/4 in. \(96mm\) Bayview Brass Cabinet Pull Instruction Manual](#)

Liberty P36128C-117-CP

Liberty Elegant Luxe 3-3/4 in. (96mm) Bayview Brass Cabinet Pull Instruction Manual

INTRODUCTION

This manual provides comprehensive instructions for the installation, maintenance, and care of your Liberty Elegant Luxe 3-3/4 inch (96mm) Bayview Brass Cabinet Pull. Designed for durability and ease of use, this cabinet pull enhances the aesthetic and functionality of your cabinetry.



Image: A single Liberty Elegant Luxe cabinet pull in Bayview Brass finish, showcasing its curved design and mounting posts.

SETUP AND INSTALLATION

The Liberty Elegant Luxe cabinet pull is designed for rear-mount installation and can be easily installed without specialized power tools. Ensure you have a measuring tape, pencil, and a screwdriver (Phillips or flathead, depending on screw type) available.

Included Hardware:

- Two 8-32 x 1 inch screws
- Two 1-5/8 inch screws

Installation Steps:

1. **Prepare the Surface:** If replacing existing hardware, carefully remove the old pull. Clean the cabinet or drawer surface where the new pull will be installed.
2. **Measure Center-to-Center:** The Liberty Elegant Luxe pull has a 3-3/4 inch (96mm) center-to-center screw mounting. Use a template or a measuring tape to mark the two drilling points on your cabinet or drawer front. Ensure these marks align precisely with the pull's screw holes.

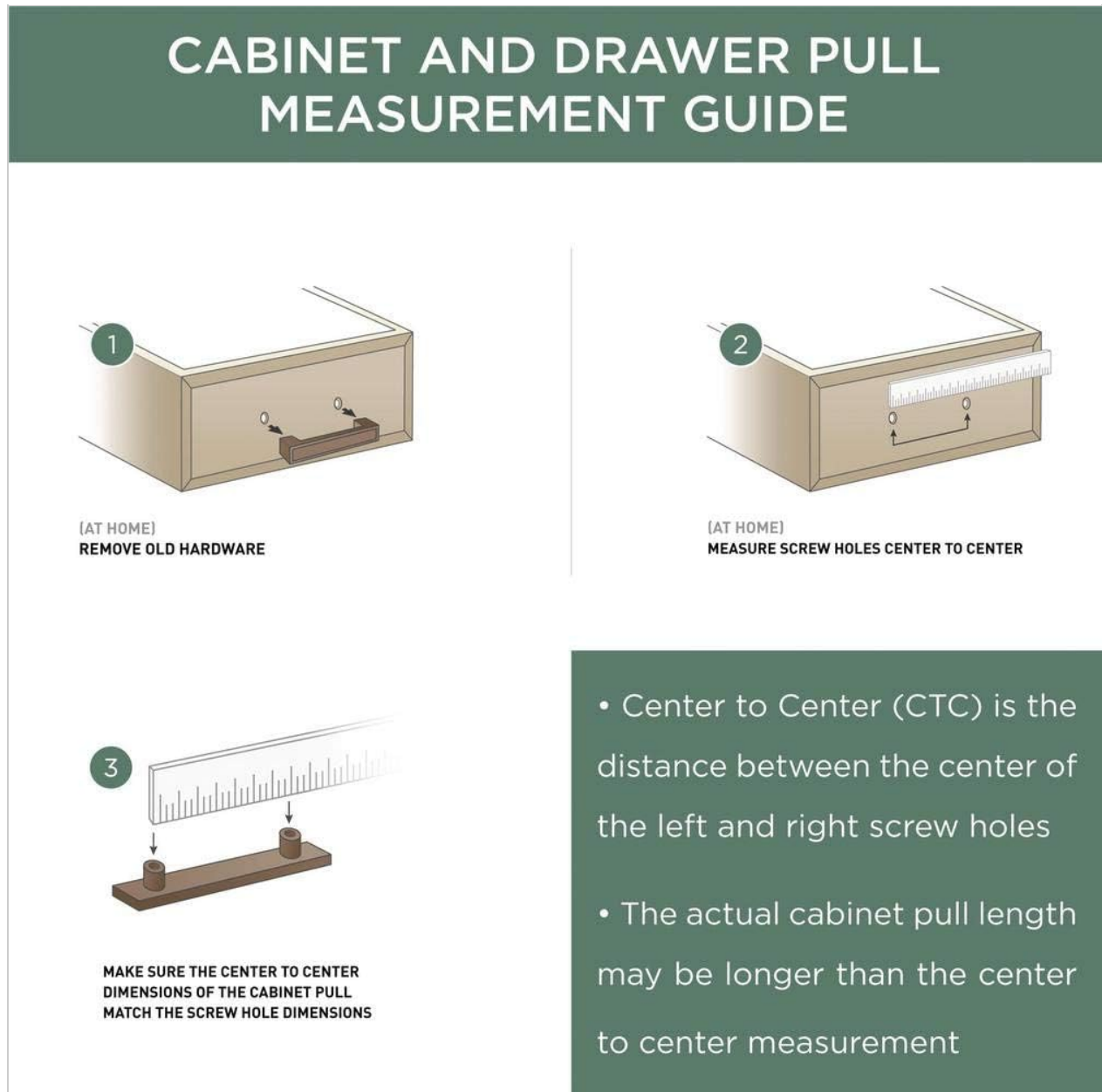
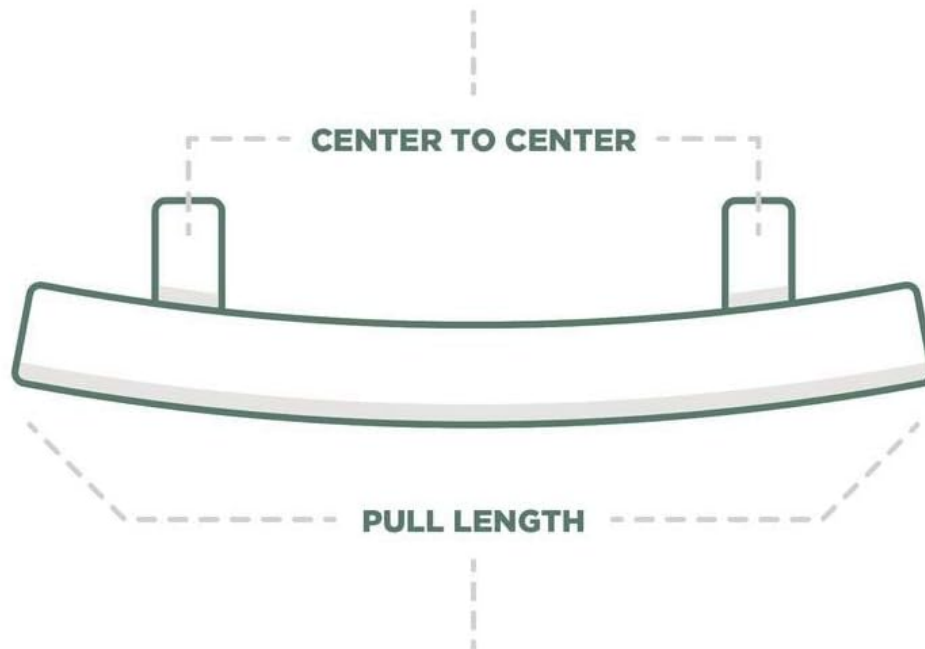


Image: A diagram illustrating how to measure the center-to-center distance for cabinet pulls, showing removal of old hardware, measuring screw holes, and matching dimensions.

3. **Drill Pilot Holes:** Using a drill with an appropriate bit size (typically 3/16 inch or 5mm), carefully drill pilot holes through the marked points. Drill from the front of the cabinet/drawer to prevent splintering.
4. **Attach the Pull:** Align the pull with the drilled holes. From the inside of the cabinet or drawer, insert the provided screws through the pilot holes and into the threaded posts of the pull. Use the appropriate screw length for your cabinet thickness.
5. **Tighten Screws:** Hand-tighten the screws with a screwdriver until the pull is secure. Avoid over-tightening, which can strip the screw threads or damage the cabinet material.

CENTER TO CENTER vs PULL LENGTH

The Center to Center (CTC) measurement of a cabinet or drawer pull is the distance between the centers of the screw holes. Use the CTC distance to determine what size pull you need.



The Pull Length is the distance from one end of the pull to the other. The pull length can be different and longer than the CTC measurement depending on style and design of the hardware.



Image: A diagram explaining the difference between center-to-center measurement (distance between screw holes) and overall pull length, which can vary based on design.



Image: Close-up view of multiple Liberty Elegant Luxe cabinet pulls installed on light-colored kitchen cabinet drawers, demonstrating their appearance in use.

OPERATING THE CABINET PULL

The Liberty Elegant Luxe cabinet pull functions as a handle for opening and closing cabinet doors and drawers. Grasp the pull firmly and apply gentle, consistent pressure to operate the cabinet mechanism.

MAINTENANCE

To maintain the appearance and longevity of your Bayview Brass cabinet pull, follow these guidelines:

- **Cleaning:** Wipe the pull regularly with a soft, damp cloth. For more thorough cleaning, use a mild soap solution and immediately dry with a clean, soft cloth.
- **Avoid Harsh Chemicals:** Do not use abrasive cleaners, ammonia-based products, or harsh chemicals, as these can damage the finish.
- **Polishing:** The Bayview Brass finish is designed to maintain its appearance. Polishing is generally not

required. If desired, use a non-abrasive brass cleaner specifically designed for matte finishes, following the product instructions carefully.



Image: A cabinet knob in Bayview Brass finish displayed against various cabinet colors, illustrating how the finish complements different styles.

TROUBLESHOOTING

Loose Pull:

If the cabinet pull becomes loose, gently tighten the screws from the inside of the cabinet or drawer using a screwdriver. Do not over-tighten.

Scratches or Damage:

Minor surface scratches may be carefully buffed with a very fine, non-abrasive cloth. For significant damage, consider replacement.

SPECIFICATIONS

Model Number	P36128C-117-CP
Material	Zinc Die Cast, Brass
Finish	Bayview Brass (Matte, Brushed)
Center-to-Center Spacing	3-3/4 inches (96 mm)
Safety Weight Rating	75 lbs.
Included Components	Mounting Screws (two 8-32 x 1 in., two 1-5/8 in.)
Special Features	Durable, Easy to Install

WARRANTY INFORMATION

This Liberty Elegant Luxe cabinet pull is backed by a limited lifetime warranty. For specific details regarding warranty coverage and claims, please refer to the official Liberty product documentation or contact customer support.

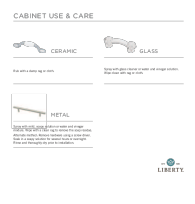

SUPPORT

For further assistance, technical support, or to inquire about replacement parts, please visit the official Liberty Hardware website or contact their customer service department. Contact information can typically be found on the product packaging or the manufacturer's website.





© 2023 Liberty Hardware. All rights reserved.

Related Documents - P36128C-117-CP

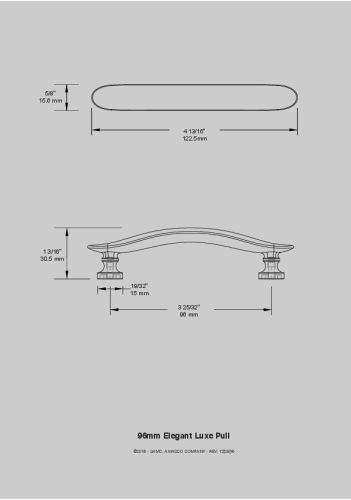
	<p>Cabinet Hardware Use and Care Guide</p> <p>A guide to cleaning and maintaining ceramic and metal cabinet hardware, including specific instructions for different finishes and materials.</p>
	<p>Liberty Term Deposits Product Disclosure Statement</p> <p>Product Disclosure Statement for an offer of Term Deposits by Liberty Financial Limited, outlining terms, risks, and issuer information.</p>

Detailed Target Market Determination for the Liberty Term Investment Fund, outlining objectives, risk tolerance, product use, customer eligibility, distribution conditions, and review triggers. Learn about investment terms, fees, and withdrawal policies.

A quick start guide for the Liberty Moxee Hotspot, covering setup, charging, and Wi-Fi connection. Learn about device features and icons.

 <p>USER MANUAL</p> <p>IPEX-USB2-H/C Owners Manual</p> <p>10MP Host and Client IPEX-USB2 Units</p> <p>Liberty</p>	<p>Liberty IPEX-USB2: USB 2.0 Over IP Extender User Manual</p> <p>Comprehensive user manual for the Liberty IPEX-USB2 series, detailing setup, operation, and technical specifications for extending USB 2.0 devices over an IP network. Includes IPEX-USB2-H (Host) and IPEX-USB2-C (Client) units.</p>
 <p>Liberty</p> <p>13 Series AI 4MP IP Outdoor Bullet Camera</p> <p>Liberty</p>	<p>Liberty L3 Series AI IP Cameras: Technical Specifications</p> <p>Comprehensive technical specifications for Liberty's L3 Series AI 4MP and 8MP IP Outdoor Cameras. This document details various models including bullet, dome, PTZ, turret, varifocal, and wedge cameras, highlighting features like AI analytics, high resolution, True WDR, IR range, IP67/IP66 ratings, and PoE.</p>

Documents - Liberty – P36128C-117-CP



[\[pdf\]](#) Specifications Catalog

36128 96mm Elegant Luxe Pull 3 4 in Center to Brushed Brass Drawer Specification Liberty P36128C 117 CP 885785124949 0885785124949 1002810824 a6827271 4775 4430 b8c5 5f9237160082 images thdstatic catalog Images a6 |||

5/8 15.6 mm 4 13/16 122.5mm 1 3/16 30.5 mm 19/32 15 mm 3 25/32 96 mm 96mm

Elegant Luxe Pull 2016 - LHMC, A MASCO COMPANY - REV: 12 28 16 ...

lang: **score:17** filesize: 139.13 K page_count: 1 document date: 2017-10-25