

[Manuals.plus](#) /

> [allsun](#) /

> allsun TS20A Handheld Metal Detector Instruction Manual

allsun TS20A

allsun TS20A Handheld Metal Detector Instruction Manual

1. PRODUCT OVERVIEW

The allsun TS20A is a handheld metal detector designed for beginners and casual treasure exploration. It features a waterproof 6-inch search coil and an adjustable shaft for comfortable use. This detector is suitable for locating coins, relics, jewelry, gold, and silver.



An overview of the allsun TS20A metal detector, highlighting its adjustable length (up to 102cm / 40.2 inches) and 15.4cm (6-inch) waterproof search coil.

Key Features:

- **Pinpoints Target Properly:** Helps in accurately locating buried objects.
- **Adjustable Sensitivity:** Allows for fine-tuning detection based on environmental conditions.
- **Easy to Use:** Simple operation suitable for all ages.
- **Audio Alarm:** Provides audible alerts upon metal detection.
- **Illumination:** Equipped with an electronic torch for use in low-light environments.

TS20A Metal Detector

Product Features



Pinpoints Target Properly



Adjustable Sensitivity



Easy to Use



Audio alarm



Illumination

well made be delicacy and perfection

This metal detector can be used for the detection of metals buried underground. With this detector you can hunt for coins, keys, and other metallic objects. It is easy to operate.



An infographic summarizing the main features of the allsun TS20A metal detector, including its ability to pinpoint targets, adjustable sensitivity, ease of use, audio alarm, and built-in illumination.

2. SETUP AND ASSEMBLY

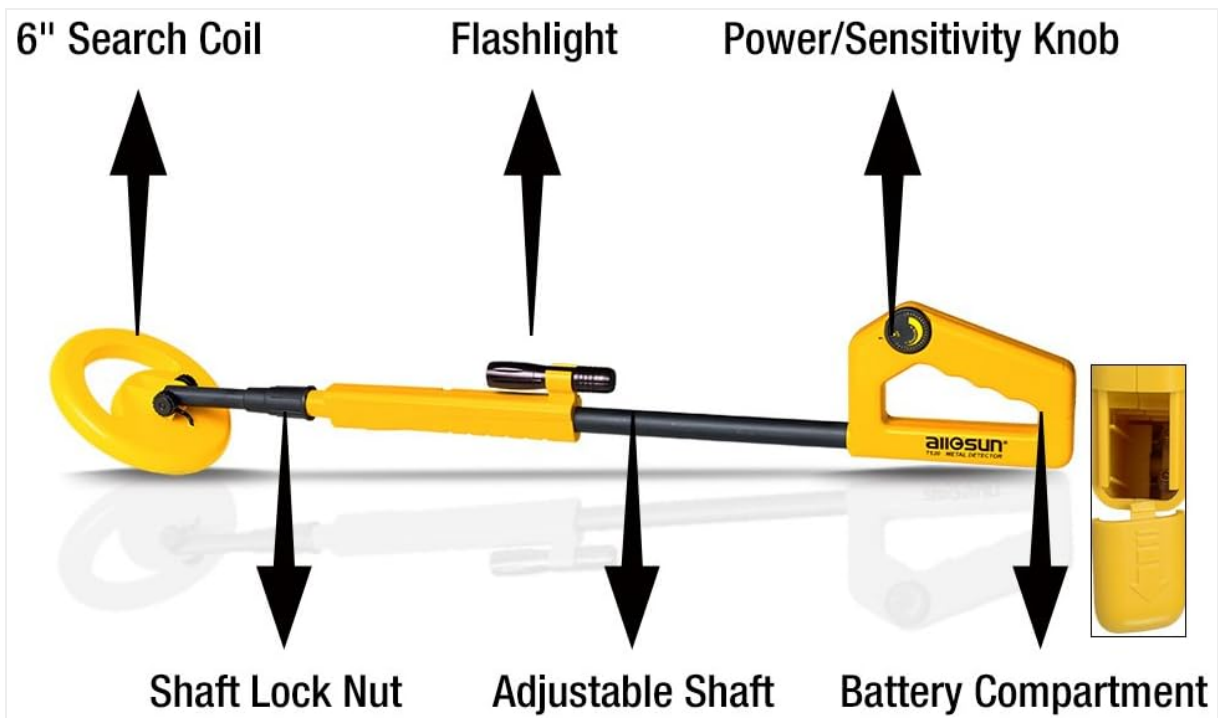
Follow these steps to assemble your allsun TS20A metal detector:

1. **Unpack Components:** Carefully remove all parts from the shipping carton. You should have the main detector unit, the adjustable shaft, the search coil, the electronic torch, and a small screwdriver.
2. **Prepare the Handle:** Unscrew the plastic clip's screws on the handle section.
3. **Attach the Shaft:** Align the locating protrusion on the right cover of the handle with the locating hole near the end of the upper stem and at the right side of the stem. The direction of the electronic torch clip should correspond with the handle.
4. **Secure the Handle:** Tighten the screws to secure the plastic clip and handle firmly to the shaft.
5. **Install Flashlight Battery:** Take out the electronic torch from its clip. Unscrew its cap and install the required battery (ensure correct polarity). Reinstall the cap and place the torch back into its clip.
6. **Install Main Unit Battery:** Hold down the battery compartment cover on the main unit and slide the cover off in the direction of the arrow. Insert one 9V, 6F22 battery or equivalent, ensuring correct polarity. Reinstall the battery cover.

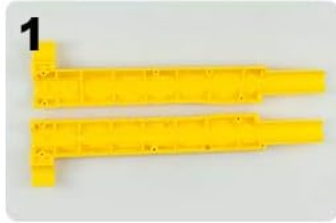
7. **Secure Search Coil:** Rotate the shaft lock nut counter-clockwise to secure the lower shaft, which is connected to the search coil.



The complete package contents of the allsun TS20A metal detector, showing the main unit, a separate electronic torch, and the user manual.



A detailed diagram labeling the key components of the allsun TS20A metal detector, including the search coil, flashlight, power/sensitivity knob, shaft lock nut, adjustable shaft, and battery compartment.



Then unscrew the plastic clip's screws



Align the locating protrusion on the right cover with the locating hole which is near the end of the upper stem and at the right side of the stem.



The Clip and the Handle should be in the same direction and tighten the screw.



Take out the detector light and install the battery.



Don't forget Shaft Lock Nut, and screw well.



Hold down the battery compartment cover, and slide the cover off in the direction of the arrow.

Visual guide demonstrating the assembly process, from unscrewing the plastic clip's screws, aligning the locating protrusion, installing the flashlight battery, and securing the shaft lock nut.

Assembly and Operation Video:

Your browser does not support the video tag.

This video demonstrates the basic operation of the allsun TS20A metal detector, including how to adjust sensitivity and detect metallic objects.

Your browser does not support the video tag.

This video provides a comprehensive guide to unboxing, assembling, and testing the allsun TS20A metal detector, showcasing its features and ease of use.

3. OPERATING INSTRUCTIONS

To achieve optimal detection results, follow these operating guidelines:

1. **Power On and Initial Sensitivity Adjustment:** With the search coil held approximately 10-20 cm (4-8 inches) away from the ground, turn the power/sensitivity knob clockwise until you hear a continuous

alarm sound.

2. **Fine-tune Sensitivity:** Slowly turn the knob counter-clockwise until the continuous alarm just stops. This is the optimal sensitivity setting for the current environment, balancing detection range with false signals.
3. **Begin Searching:** Sweep the search coil slowly and steadily across the ground, keeping it parallel to the surface. When a metallic object is detected, the detector will emit an audio alarm.
4. **Pinpointing:** To pinpoint the exact location of the object, move the search coil in a cross-pattern over the area where the alarm was strongest. The alarm will be loudest directly over the target. Ensure the search coil is 90 degrees perpendicular to the detected object for best results.
5. **Using the Electronic Torch:** If operating in low-light conditions, activate the electronic torch for improved visibility.



When you open the switch, first adjust the knob into the state of Continuous alarm sound, then turn back slowly and slowly, until you turn to the point which is just no any sound, also can say, turn to the place that between with the alarm sound and with no-alarm sound, at this time, the sensitivity is with the best place.



Please make sure the detector search coil be 90° perpendicular to the detected object.

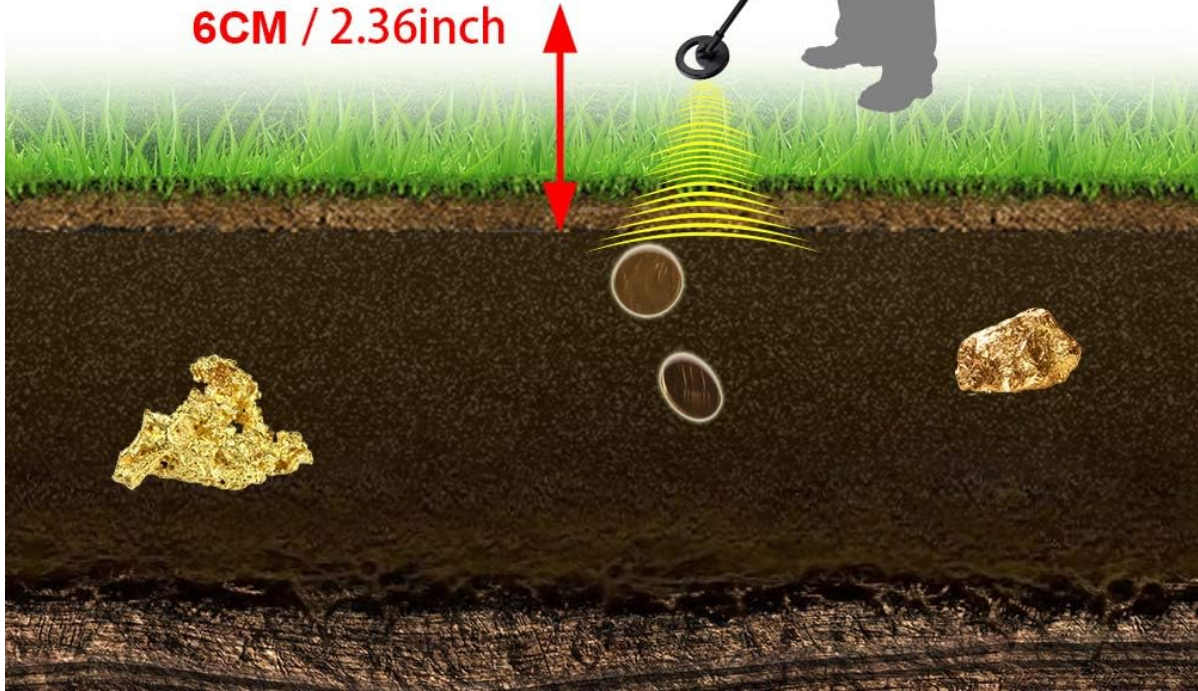
Illustrations detailing how to adjust the detector's sensitivity for optimal performance and the correct technique for searching, ensuring the search coil is perpendicular to the detected object.

THE TESTING DEPTH IS

6CM

WHEN THE TESTED OBJECT IS
IS A ONE DOLLAR COIN.

6CM / 2.36inch



A visual representation of the metal detector's effective testing depth, indicating it can detect a one-dollar coin up to 6cm deep in the ground.

4. MAINTENANCE

Proper maintenance ensures the longevity and optimal performance of your metal detector:

- **Cleaning:** After each use, wipe down the detector with a damp cloth to remove dirt, dust, and moisture. Avoid using abrasive cleaners or solvents.
- **Battery Care:** Always remove the 9V battery from the main unit if the detector will not be used for an extended period to prevent battery leakage and damage.
- **Storage:** Store the metal detector in a dry, cool place, away from direct sunlight and extreme temperatures.
- **Search Coil:** While the search coil is waterproof, the main control unit (IP20 rated) is not. Avoid submerging the main unit in water.

5. TROUBLESHOOTING

If you encounter issues with your allsun TS20A metal detector, refer to the following common troubleshooting tips:

- **No Power:**

- Check if the 9V battery is correctly installed with proper polarity.
 - Replace the 9V battery with a fresh one.
 - Ensure the power/sensitivity knob is turned ON.
- **No Detection or Weak Signal:**
 - Adjust the sensitivity knob as described in the Operating Instructions (Section 3).
 - Ensure the search coil is close enough to the ground and parallel to the surface.
 - Test with a known metal object to confirm functionality.
- **Constant or False Alarms:**
 - Reduce the sensitivity by turning the knob counter-clockwise slightly.
 - Move away from areas with high electrical interference (e.g., power lines, other electronic devices).
 - Ensure the search coil is not touching the ground or any vegetation.

6. SPECIFICATIONS

Specification	Detail
Brand	allsun
Model Number	TS20A
Color (for this variant)	Yellow
Material	Acrylonitrile Butadiene Styrene
Power Source	Battery Powered
Batteries Required	1 x 9V battery (6F22 or equivalent)
Extended Length	102 cm (40.16 inches), adjustable
Search Coil Diameter	15.4 cm (6 inches)
Working Distance (Detection Depth)	Approx. 6cm (for a 5 cent coin in air)
Display Type	Audio alarm, Illumination (Electronic Torch)
Item Weight	Approx. 1.46 Pounds (662g, including battery)
International Protection (IP) Rating	IP20 (Main unit not waterproof; search coil is waterproof)
Operating Temperature	0°C to 45°C
Operating Altitude	0 to 2000 m

7. WARRANTY AND SUPPORT

For specific warranty information, please refer to the documentation provided with your purchase or contact the retailer directly. For product support, technical assistance, or inquiries, please visit the official allsun website or contact their customer service department through the channels provided by your point of

purchase.