



**Manuals.plus /**

› **Nine West /**

› Nine West Sunflower Frame User Manual

## **Nine West 2293**

# **Nine West Sunflower Frame User Manual**

Model: 2293

## **PRODUCT OVERVIEW**

---

The Nine West Sunflower Frame is a decorative 2"x2" round picture frame designed for tabletop display. It features a vibrant yellow sunflower design with a distinctive red jeweled ladybug accent, providing an elegant way to showcase small photographs.



**Figure 1:** Front view of the Sunflower Frame, showcasing its yellow petals, round photo opening, and red jeweled ladybug. A sample photo of two children is displayed within the frame.



**Figure 2:** A detailed close-up of the red jeweled ladybug accent, highlighting its intricate design and embedded jewels.

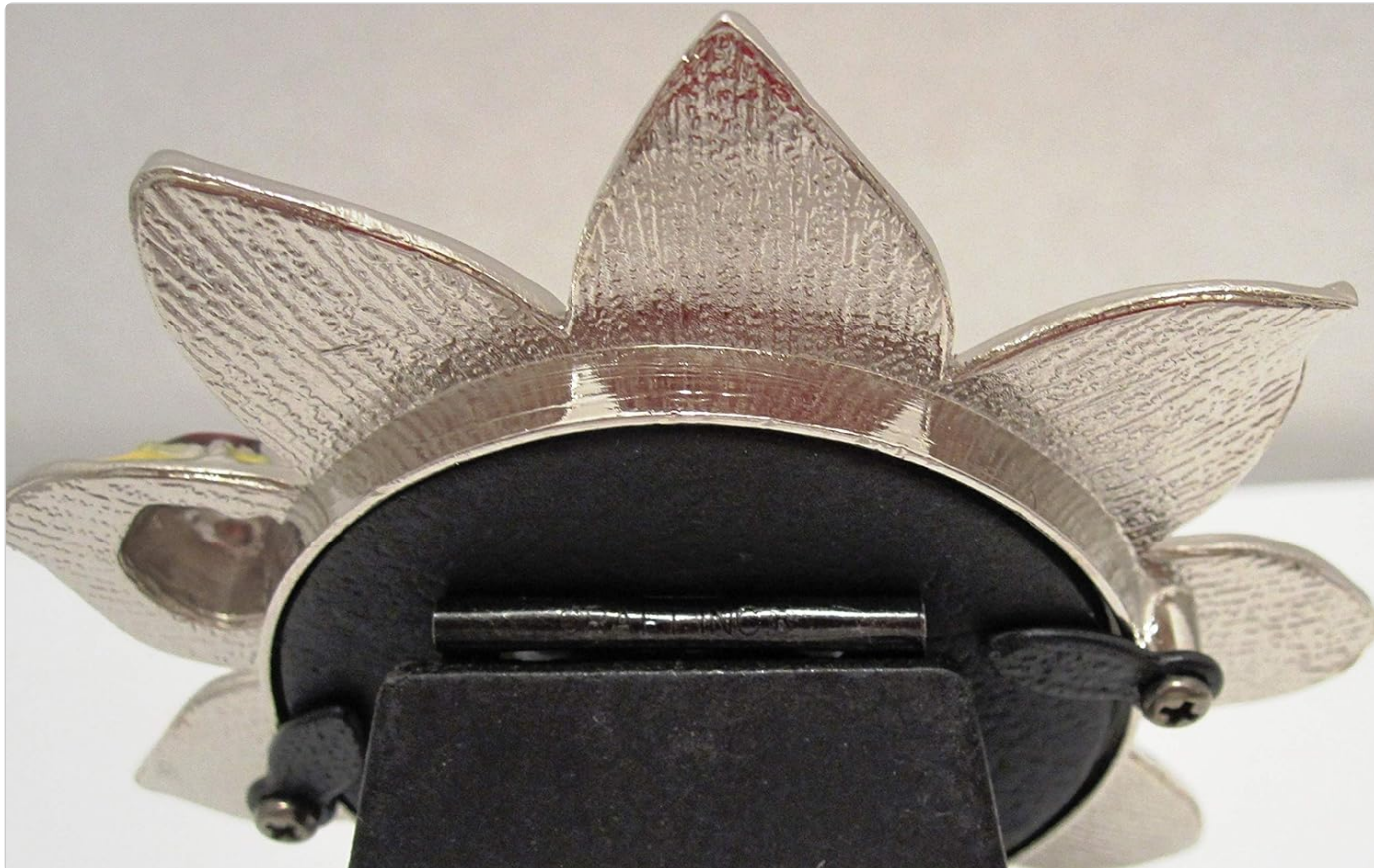
## SETUP

### Inserting a Photograph

1. Carefully turn the frame to its back side.
2. Locate the rotating tabs or clips securing the back panel. Rotate or lift these tabs to release the back panel.
3. Remove the back panel and any protective inserts.
4. Insert your 2"x2" photograph into the frame opening, ensuring it is centered and facing forward.
5. Replace the back panel, aligning it correctly, and secure it by rotating or pressing the tabs back into place.

### Displaying the Frame

The Sunflower Frame is designed for tabletop display. Extend the easel back located on the rear of the frame until it provides stable support. Place the frame on a flat, stable surface such as a desk, shelf, or nightstand.



**Figure 3:** Rear view of the Sunflower Frame, illustrating the easel back mechanism for tabletop display.

## OPERATING

---

Once a photograph is inserted and the frame is positioned on a stable surface, no further operation is required. The frame is a static display item.

## MAINTENANCE

---

- **Cleaning:** To clean the glass and frame, gently wipe with a soft, dry, lint-free cloth. For stubborn smudges on the glass, a small amount of glass cleaner can be applied to the cloth (not directly to the frame) and then wiped clean. Avoid abrasive cleaners or materials that could scratch the finish.
- **Handling:** Handle the frame with care to prevent accidental drops or impacts, which could damage the glass or frame structure.
- **Storage:** If storing the frame, ensure it is placed in a secure location where it will not be crushed or exposed to extreme temperatures or humidity.

## TROUBLESHOOTING

---

### Common Issues and Solutions

Issue	Solution
Photograph does not fit.	Ensure your photograph is 2"x2" in size. Trim the photo if necessary, or print a new one to the correct dimensions.
Frame is unstable on surface.	Verify that the easel back is fully extended and locked into position. Ensure the surface is flat and level.
Glass appears dirty or smudged.	Clean the glass using a soft, lint-free cloth. For persistent smudges, use a small amount of glass cleaner applied to the cloth.

## SPECIFICATIONS

---

Feature	Detail
Brand	Nine West
Model Number	2293
Product Dimensions	2"L x 2"W
Shape	Round
Mounting Type	Tabletop
Frame Type	Single Picture Frame
Frame Material	Glass
Special Feature	Easel Back
Item Weight	1 Pounds
UPC	689851015175

## WARRANTY INFORMATION

---

Specific warranty details for the Nine West Sunflower Frame are typically provided at the time of purchase or included with the product packaging. Please refer to those documents for comprehensive warranty terms and conditions.

## CUSTOMER SUPPORT

---

For further assistance, questions, or concerns regarding your Nine West Sunflower Frame, please contact the retailer from whom you purchased the product or refer to the official Nine West website for contact information.

