

Manuals+

[Q & A](#) | [Deep Search](#) | [Upload](#)

manuals.plus /

› [ecobee](#) /

› [ecobee Switch+ Smart Light Switch with Amazon Alexa Built-in User Manual](#)

ecobee EB-SMSWV-02

ecobee Switch+ Smart Light Switch with Amazon Alexa Built-in User Manual

Model: EB-SMSWV-02

1. INTRODUCTION

The ecobee Switch+ is a smart light switch designed to integrate seamlessly into your smart home ecosystem, offering advanced lighting control and built-in Amazon Alexa functionality. This manual provides detailed instructions for installation, operation, and troubleshooting to ensure optimal performance of your device.



Image: Front view of the ecobee Switch+ Smart Light Switch.

The ecobee Switch+ combines smart lighting features with the convenience of Amazon Alexa, allowing you to control your lights with voice commands, motion detection, ambient light sensors, and through the ecobee mobile app. It also supports Apple HomeKit and Google Assistant for broader smart home integration.

[Product Overview Video](#)

Your browser does not support the video tag.

Video: An official overview of the ecobee Switch+ Smart Light Switch, highlighting its key features and benefits.

2. SAFETY INFORMATION

WARNING: Installation involves handling high voltage wiring. If you are uncomfortable or unfamiliar with electrical work, consult a qualified electrician. Always turn off power at the circuit breaker before beginning installation.

The ecobee Switch+ requires a neutral wire and a ground wire for proper operation. It is compatible with single-pole switches only and is not designed for use with 3-way or 4-way switches. Ensure your electrical setup meets these requirements before proceeding.

3. WHAT'S IN THE BOX

- ecobee Switch+ Smart Light Switch
- Decorative Trim Plate
- Installation Instructions
- Wire Nuts

Install it yourself in about
45 minutes with easy
step-by-step instructions.

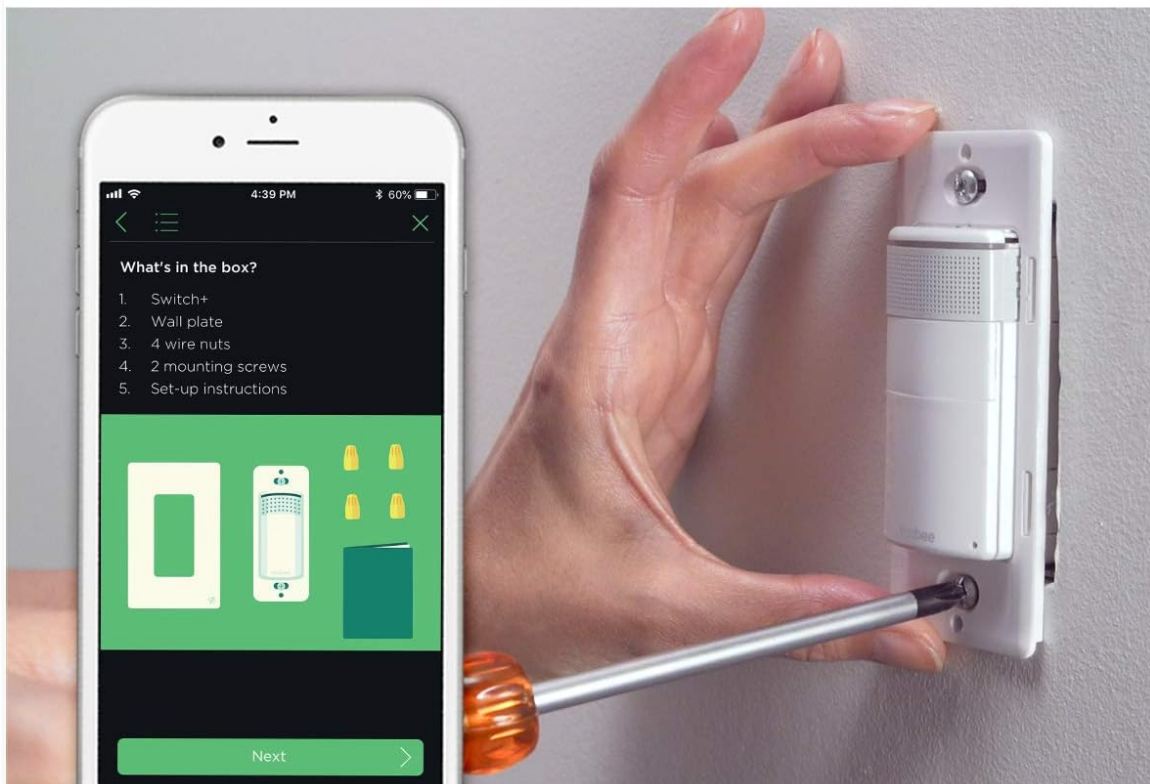


Image: The ecobee Switch+ box contents, showing the switch, wall plate, wire nuts, and setup instructions on a smartphone screen.

4. SETUP AND INSTALLATION

Installation of the ecobee Switch+ typically takes about 45 minutes and can be completed by following the step-by-step instructions provided in the ecobee mobile app. Ensure you have the necessary tools: a Philips head screwdriver, a flathead screwdriver, and pliers (optional).

Installation Steps:

1. **Turn off Power:** Locate your circuit breaker and turn off the power to the switch you are replacing. Confirm power is off by flipping the switch a few times.
2. **Remove Old Switch:** Carefully remove the existing wall plate and unscrew the old light switch from the wall box.
3. **Identify Wires:** Identify the line, load, neutral, and ground wires. The ecobee Switch+ requires a neutral wire (typically white) and a ground wire (typically copper or green).
4. **Connect ecobee Switch+:** Use the provided wire nuts to connect the ecobee Switch+ wires to your home's wiring according to the in-app instructions.
5. **Mount Switch:** Secure the ecobee Switch+ into the wall box using the mounting screws.
6. **Install Wall Plate:** Attach the decorative trim plate.
7. **Restore Power:** Turn the power back on at the circuit breaker.
8. **App Setup:** Download the ecobee app from the App Store or Google Play. Follow the in-app prompts to connect your Switch+ to your Wi-Fi network and complete the setup, including linking with Amazon Alexa, Apple HomeKit, or Google Home.

Detailed Installation and Setup Video

Your browser does not support the video tag.

Video: A comprehensive guide demonstrating the unboxing, installation process, and initial setup of the ecobee Switch+ using the mobile app.

5. OPERATING INSTRUCTIONS

Physical Control:

The ecobee Switch+ features a rocker-style switch. Press the bottom portion to toggle the connected lights on or off.

Voice Control with Amazon Alexa:

With built-in Amazon Alexa, you can control your lights and access Alexa's features directly from the switch. Simply say "Alexa" followed by your command.

- "Alexa, turn on the lights."
- "Alexa, turn off the lights."
- "Alexa, set a timer for 5 minutes."

- "Alexa, what's the weather?"
- To mute Alexa, press the top portion of the switch until the light ring turns red. Press again to unmute.

Built-in Amazon Alexa

lets you ask for the lights,
news, music, and more.

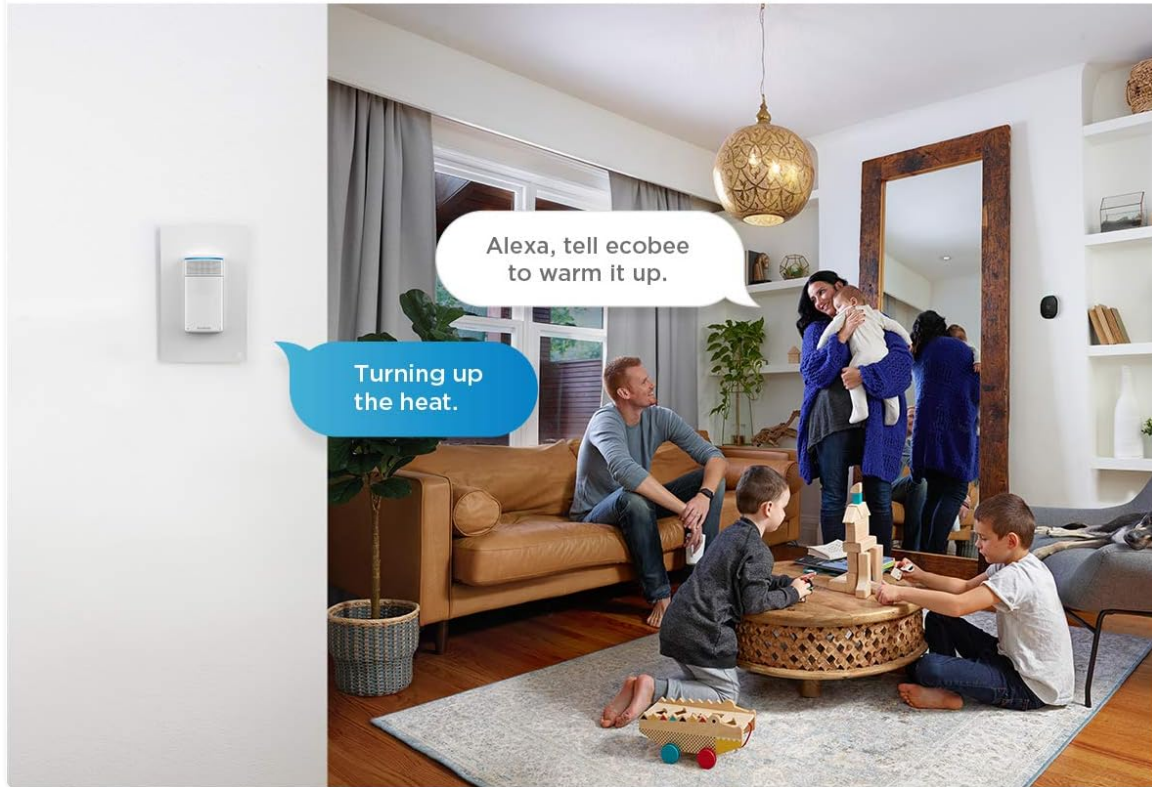


Image: A family using voice commands to interact with the ecobee Switch+ in a living room setting.

Mobile App Control:

Use the ecobee mobile app (available on Android and iOS) to control your lights remotely, adjust settings, and manage smart features.

- Toggle lights on/off.
- Configure Smart On/Off settings.
- Set Night Light preferences.
- Integrate with Apple HomeKit and Google Home for centralized control.

Control from **anywhere** with the ecobee mobile app.



Image: The ecobee Switch+ on a wall, with a smartphone showing the ecobee app interface for remote light control.

6. SMART FEATURES

The ecobee Switch+ offers several intelligent features to automate your lighting:

- **Smart On:** Automatically turns on lights when motion is detected in the room. You can configure daylight detection and 'Do Not Disturb' times to prevent activation during specific periods.
- **Smart Off:** Automatically turns off lights when no one is detected in the room after a set period (e.g., 1 minute). This helps conserve energy.

- **Night Light:** Provides a subtle glow in the dark, useful for hallways or children's rooms. This feature can be enabled or disabled via the app.
- **Ambient Light Sensor:** Detects the amount of natural light in a room to optimize lighting behavior.
- **Motion Sensor:** Detects occupancy to trigger Smart On/Off features.

Lights on, your way.

Rely on motion or ambient light sensors, or just ask Alexa.

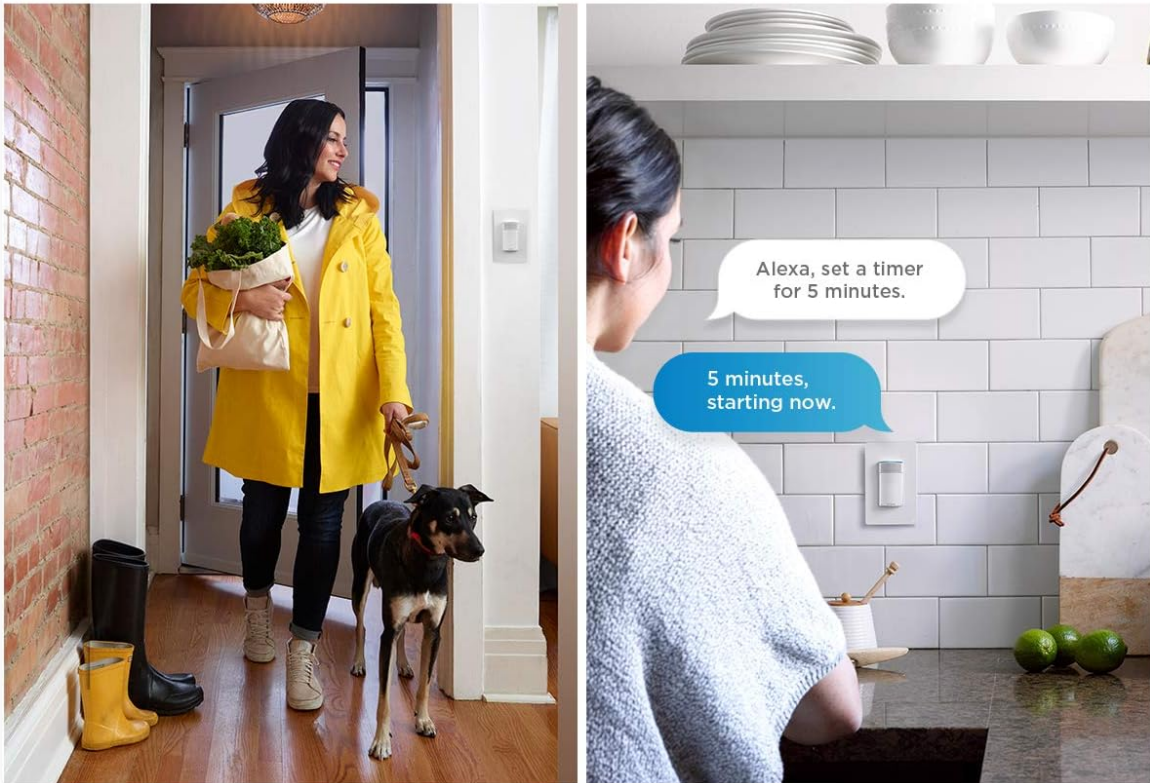


Image: Demonstrates motion-activated lighting and voice control for setting timers.

7. MAINTENANCE

- **Cleaning:** Gently wipe the surface of the switch and wall plate with a soft, dry cloth. Avoid using abrasive cleaners or solvents.
- **Software Updates:** Ensure your ecobee Switch+ firmware is up to date through the ecobee mobile app to access the latest features and improvements.

8. TROUBLESHOOTING

- **Lights not responding:** Check if the circuit breaker is on. Ensure the switch is properly

installed and wired. Verify Wi-Fi connectivity.

- **Alexa not responding:** Ensure Alexa is not muted (red light ring). Check Wi-Fi connection. Re-link your Amazon account in the ecobee app if necessary.
- **Wi-Fi connectivity issues:** Ensure your Wi-Fi network is 2.4 GHz. If using a mesh Wi-Fi system, ensure the switch is connecting to a stable signal. Try restarting your router.
- **Smart features not working:** Verify settings in the ecobee app for Smart On, Smart Off, and Night Light. Check for any 'Do Not Disturb' schedules that might be interfering.

9. SPECIFICATIONS

Specification	Value
Model Number	EB-SMSWV-02
Dimensions (Switch+)	Height: 106 mm (4.17 inch), Width: 45 mm (1.8 inch), Depth: 50 mm (2 inch)
Dimensions (Wall Plate)	Height: 119 mm (4.7 inch), Width: 45 mm (2.95 inch), Depth: 7 mm (0.3 inch)
Electrical Requirements	120V AC 60Hz, 600W incandescent, 150W LED and CFL
Wiring	Neutral and ground wire required, Automatic line and load wire switching
Compatibility	Single/double/multi-switch (not 3-way compatible), Rocker style plates
Connectivity	Wi-Fi, IEEE 802.11 b/g/n 2.4 GHz, WPA/WPA2, WEP, DHCP, TLS, 915 MHz
Control Method	Voice (Amazon Alexa), Mobile App (Android, iOS), HomeKit, Google Assistant
Operation Mode	Automatic, Off, Smart Off
Material	Copper (contact material)
Certifications	RoHS compliant, UL Listed

10. WARRANTY AND SUPPORT

Warranty:

The ecobee Switch+ comes with a 1-Year Limited Warranty. Please refer to the warranty documentation included with your product for full details and terms.







Customer Support:

For further assistance, technical support, or warranty claims, please contact ecobee customer

support through their official website or the ecobee mobile app.

© 2025 ecobee Inc. All rights reserved.

Related Documents - EB-SMSWV-02

	<p>ecobee Smart Thermostat: Installation, Features, and Warranty Guide</p> <p>A comprehensive guide to installing and using the ecobee Smart Thermostat, detailing its features for comfort, energy efficiency, smart home integration, and warranty information.</p>
	<p>ecobee EB-STATE6-01 Smart Thermostat Premium User Manual</p> <p>User manual for the ecobee EB-STATE6-01 Smart Thermostat Premium, covering specifications, features like Eco+, air purification, voice control, integrations, and frequently asked questions for optimal home comfort and energy management.</p>
	<p>ecobee Smart Thermostats and Accessories ecobee3 Lite Pro, ecobee4 Pro, EMS Si</p> <p>Explore the range of ecobee smart thermostats, including the ecobee3 Lite Pro, ecobee4 Pro, and ecobee EMS Si, along with accessories like Room Sensors and Power Extender Kits. Features, specifications, and comparisons.</p>
	<p>ecobee Smart Thermostat: Features, Installation, and Warranty Guide</p> <p>A comprehensive guide to the ecobee Smart Thermostat, detailing its features for home comfort and energy efficiency, step-by-step installation instructions, smart home integration capabilities, and warranty information. Learn how ecobee optimizes your home environment.</p>
	<p>Ecobee Smart Thermostat Premium: Features, Use, and Care Guide</p> <p>Discover the Ecobee Smart Thermostat Premium, designed for optimal home comfort and energy efficiency. Learn about its smart features, integration capabilities with major smart home ecosystems, and essential usage and care instructions.</p>
	<p>How to Install Your ecobee Smart Thermostat</p> <p>A step-by-step guide to installing your ecobee smart thermostat, including instructions for systems with and without a C wire, and troubleshooting tips.</p>