

RL LIVE YOUR LIGHT R50721011 Marc

Reality Marc Table Lamp User Manual

Brand: **RL LIVE YOUR LIGHT** | Model: **R50721011 Marc**

1. INTRODUCTION

This manual provides essential information for the safe and efficient use of your Reality Marc Table Lamp. Please read these instructions carefully before assembly and operation, and retain them for future reference.

Safety Information

- Ensure the power supply is disconnected before installation, cleaning, or maintenance.
- This product is designed for indoor use only (IP20 rating).
- Do not exceed the maximum wattage of 25 Watts for the E27 bulb.
- Keep the lamp away from water and moisture.
- If the external flexible cable or cord of this luminaire is damaged, it shall be exclusively replaced by the manufacturer or his service agent or a similar qualified person in order to avoid a hazard.

2. PACKAGE CONTENTS

Please check that all components are present and undamaged:

- 1x Marc Table Lamp (with grey metal shade and grey natural wood base)
- 1x Power cable with in-line switch
- Bulb not included (requires 1x E27, max. 25W incandescent bulb)



Image 1: The Reality Marc Table Lamp, featuring a grey metal shade and a grey natural wood base. The lamp is shown from a front-side angle, highlighting its industrial style and adjustable head.

3. SETUP INSTRUCTIONS

Follow these steps to set up your Marc Table Lamp:

1. **Unpack:** Carefully remove all components from the packaging.
2. **Placement:** Place the lamp on a stable, flat surface suitable for table mounting. Ensure there is adequate space around the lamp for heat dissipation and to prevent accidental knocking.
3. **Install Bulb:** Screw an E27 incandescent bulb (max. 25 Watts) into the lamp holder. Do not overtighten. Ensure the bulb is securely seated.
4. **Connect Power:** Insert the power plug into a suitable 230 Volt wall socket.

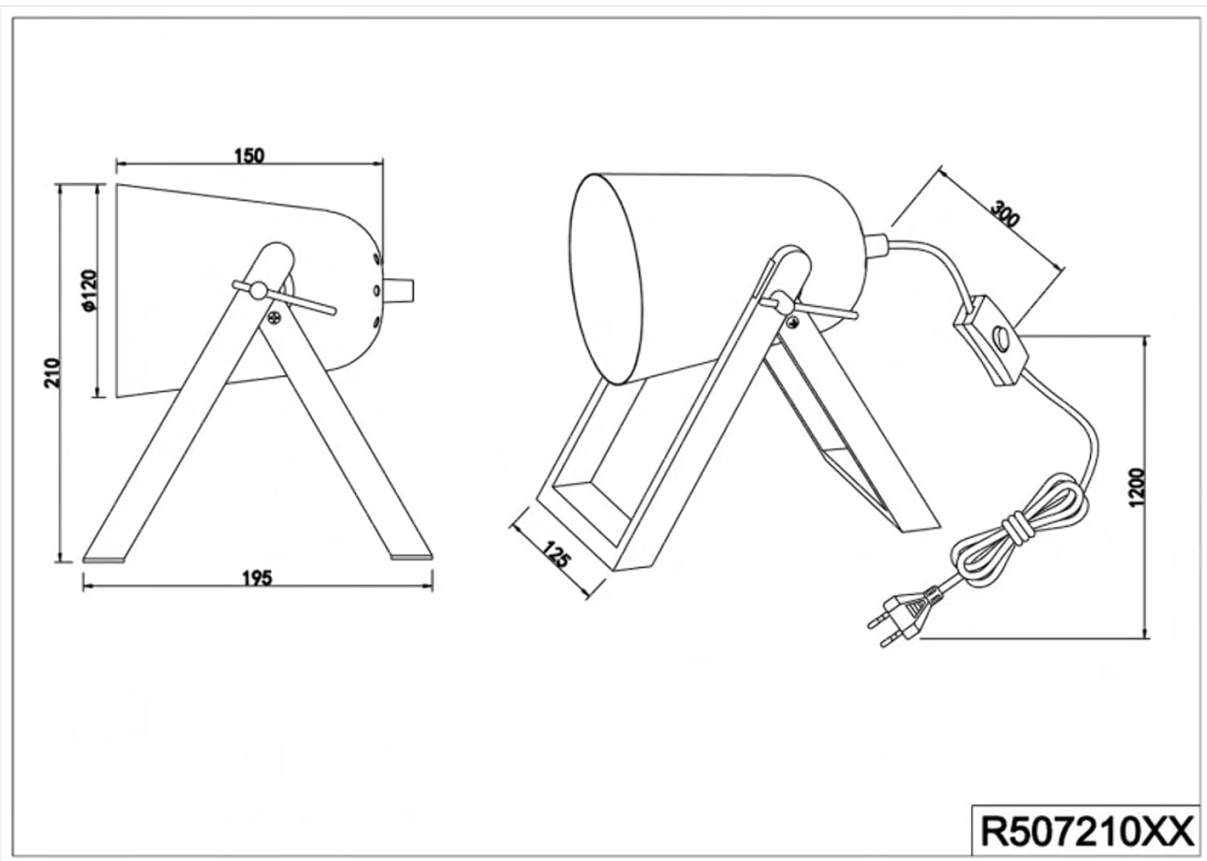


Image 2: Technical drawing illustrating the dimensions of the Marc Table Lamp. It shows the lamp's height (210mm), width (195mm), depth (125mm), and the diameter of the shade (120mm), along with the power cable length (1200mm) and the position of the in-line switch.

4. OPERATING INSTRUCTIONS

The Marc Table Lamp is simple to operate:

- **Turning On/Off:** Locate the in-line switch on the power cable. Press the switch to turn the lamp on or off.
- **Adjusting Light Direction:** The lamp features an adjustable arm. Gently loosen the knob on the side of the lamp head, adjust the shade to your desired angle for reading or ambient lighting, and then tighten the knob to secure it in place.

5. MAINTENANCE

Regular maintenance ensures the longevity and optimal performance of your lamp.

Cleaning

- Always disconnect the lamp from the power supply before cleaning.
- Wipe the lamp with a soft, dry cloth.
- Do not use abrasive cleaners, solvents, or polishing agents as they may damage the finish.

Bulb Replacement

- Ensure the lamp is unplugged and the bulb has cooled down completely before attempting to replace it.
- Carefully unscrew the old E27 bulb.
- Screw in a new E27 incandescent bulb (max. 25 Watts).

6. TROUBLESHOOTING

If you encounter issues with your lamp, refer to the following common problems and solutions:

Problem	Possible Cause	Solution
Lamp does not turn on.	No power supply. Bulb is faulty or loose. Switch is off.	Check if the plug is securely in the socket. Replace or tighten the bulb. Ensure the in-line switch is in the 'on' position.
Light flickers.	Loose bulb connection. Faulty bulb.	Tighten the bulb. Replace the bulb.
Lamp gets too hot.	Incorrect bulb wattage.	Ensure the bulb wattage does not exceed 25 Watts.

7. SPECIFICATIONS

Feature	Detail
Brand	RL LIVE YOUR LIGHT
Manufacturer	Reality Leuchten
Model Number	R50721011 Marc
Dimensions (L x W x H)	12.5 x 19.5 x 21 cm
Weight	414 g
Material	Metal (shade), Natural Wood (base)
Color	Grey
Style	Industrial
Finish Type	Powder coating
IP Rating	IP20
Number of Bulbs	1
Bulb Type	Incandescent (not included)
Cap Type	E27
Max Wattage	25 Watts
Voltage	230 Volts
Switch Style	In-line
Special Features	Adjustable arm
Country of Origin	China

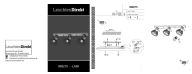



8. WARRANTY INFORMATION


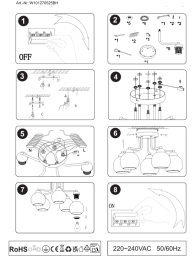
For warranty details, please refer to the documentation provided with your purchase or contact the retailer/manufacturer directly. Warranty terms typically cover manufacturing defects for a specified period from the date of purchase.

9. SUPPORT

If you require further assistance or have questions not covered in this manual, please contact your retailer or the manufacturer, Reality Leuchten, for support.

Related Documents - R50721011 Marc

	<p>LeuchtenDirekt 998275 LAMI 3-Light Wooden Ceiling Fixture - Installation Guide</p> <p>Installation guide and specifications for the LeuchtenDirekt 998275 LAMI 3-light ceiling fixture. Features a wooden base and metal cage shades, operating at 230V with E27 bulbs.</p>
	<p>RL LED Rechargeable Table Lamp R521761XX - Safety & Specifications</p> <p>Concise guide to the RL LED rechargeable table lamp (Art.Nr. R521761XX), detailing essential safety warnings in multiple languages, product specifications, charging information, and manufacturer details.</p>
	<p>Gingko Mini Alice Mushroom Lamp Quick User Manual</p> <p>User manual for the Gingko Mini Alice Mushroom Lamp, detailing product operation, charging instructions, materials, warranty, and care. Features sustainable design and multiple color modes.</p>
	<p>Poldina Table Lamp by Zafferano: Features, Specifications, and Accessories</p> <p>Explore the Poldina Table Lamp by Zafferano, a battery-powered portable LED light featuring touch dimming, adjustable color temperature, and IP65 rating. Includes detailed specifications, available finishes, and compatible accessories.</p>

<p>Cordless Rechargeable LED Table Lamp</p>  <p>User Manual</p>	<p>Cordless Rechargeable LED Table Lamp User Manual - UMEXUS</p> <p>Comprehensive user manual for the UMEXUS Cordless Rechargeable LED Table Lamp. Find detailed specifications, features, step-by-step assembly instructions, usage guide, safety precautions, and package contents for this portable, touch-dimmable light.</p>
	<p>W101270525BH 5-Head E27 Ceiling Light Installation Guide</p> <p>Detailed installation instructions for the W101270525BH 5-head E27 ceiling light fixture with smoky grey glass and matte black finish. Includes wiring, assembly, and safety information.</p>