

**Altec Lansing IMA699**

# Altec Lansing VersA Smart Portable Bluetooth Speaker

Model: IMA699 | Brand: Altec Lansing

## PRODUCT OVERVIEW



*The Altec Lansing VersA Smart Portable Bluetooth Speaker in Black and Silver.*

The Altec Lansing VersA is a versatile smart speaker designed for hands-free voice control and portable audio. It integrates with Amazon Alexa, allowing users to play music, check weather, and control smart home devices using voice commands. Its Far-field Voice Control ensures commands are recognized even in noisy environments or from a distance.

Built for portability, the VersA speaker supports both Wi-Fi and Bluetooth connectivity, enabling music playback anywhere. It also features multi-room connectivity, allowing multiple VersA speakers to be linked for a surround sound experience. The speaker boasts an IP67 rating, making it Waterproof, Shockproof, Snow

proof, and capable of floating, ensuring durability in various conditions.

## KEY FEATURES

---

- **Far-Field Voice Control:** Seamless interaction with Amazon Alexa for hands-free operation and voice recognition from a distance.
- **Multi-Room Connectivity:** Connect multiple VersA speakers wirelessly for a synchronized audio experience across different rooms, with a 100 ft. wireless range.
- **Dual Connectivity:** Enjoy music on the go with Bluetooth, or at home with Wi-Fi functionality.
- **"Everything Proof" Durability:** IP67 rated, making the speaker Waterproof, Shockproof, and Snow proof. It also floats, providing robust protection against the elements.

## PACKAGE CONTENTS

---

Upon unboxing your Altec Lansing VersA speaker, please ensure all the following items are present:

- 1 x VersA Speaker
- 1 x Wall Charger
- 1 x USB Charge Cable
- 1 x Quick Start Guide



Front of product packaging.



Back of product packaging.



Side view highlighting features.





Side view showing voice command examples.



Top view with package contents and contact information.

## 1. Charging the Speaker

Before first use, fully charge your VersA speaker. Connect the provided USB charge cable to the speaker's charging port and the wall charger. Plug the wall charger into a power outlet. The charging indicator light will show the charging status.

## 2. Powering On/Off

To power on the speaker, press and hold the power button located on the top panel until you hear an audible prompt. To power off, press and hold the power button again until the speaker shuts down.

## 3. Connecting to Wi-Fi (for Smart Features)

1. Download the Altec Lansing Connect app from your device's app store.
2. Open the app and follow the on-screen instructions to set up your VersA speaker on your Wi-Fi network. This process typically involves selecting your Wi-Fi network and entering the password.
3. Once connected, you can link your Amazon Alexa account through the app to enable voice control features.

## 4. Bluetooth Pairing

1. Ensure the speaker is powered on.
2. Activate Bluetooth on your mobile device (smartphone, tablet, etc.).
3. On your device, search for available Bluetooth devices and select "Altec VersA" from the list.
4. Once paired, the speaker will indicate a successful connection, and you can begin streaming audio.

## OPERATING YOUR VERSA SPEAKER

---

### Voice Control with Amazon Alexa

The Altec Lansing VersA speaker features integrated Amazon Alexa. Once connected to Wi-Fi and linked to your Alexa account, you can use voice commands to:

- Play music from supported streaming services (e.g., "Alexa, play my snow day playlist").
- Get information (e.g., "Alexa, what's the weather?").
- Control smart home devices (e.g., "Alexa, turn off the lights upstairs").
- Set alarms, timers, and more.

Speak clearly and naturally towards the speaker. The Far-field Voice Control is designed to pick up your voice from across the room.

### Music Playback

You can play music via Wi-Fi streaming through Alexa-supported services or directly via Bluetooth from any compatible device. For optimal sound quality and smart features, Wi-Fi connection is recommended.

### Multi-Room Audio

To create a multi-room audio experience, ensure all VersA speakers are connected to the same Wi-Fi network and configured through the Altec Lansing Connect app or the Alexa app. You can then group speakers to play the same audio simultaneously.

Your browser does not support the video tag.

Official product video demonstrating the Altec Lansing VersA speaker's voice control, portability, and durability features in various daily scenarios, including being rinsed under water.

## CARE AND MAINTENANCE

### Waterproof and Durability

The VersA speaker is IP67 rated, meaning it is protected against dust and can withstand immersion in water up to 1 meter for 30 minutes. It is also shockproof and snow proof. While durable, avoid intentionally submerging it for extended periods or exposing it to extreme temperatures.

### Cleaning

To clean the speaker, simply rinse it with fresh water after exposure to dirt, sand, or saltwater. Use a soft, damp cloth for general cleaning. Do not use harsh chemicals or abrasive cleaners.

### Battery Care

To prolong battery life, avoid fully discharging the speaker frequently. Charge it regularly, especially if it will be stored for an extended period. Store in a cool, dry place.

## TROUBLESHOOTING

Problem	Possible Solution
Speaker does not power on.	Ensure the battery is charged. Connect the speaker to the charger and try again.
Cannot connect to Bluetooth.	Make sure Bluetooth is enabled on your device and the speaker is in pairing mode. Forget the device on your phone and re-pair. Ensure no other devices are currently connected to the speaker.
Wi-Fi connection issues.	Check your Wi-Fi network status. Ensure the speaker is within range of your router. Re-run the Wi-Fi setup process through the Altec Lansing Connect app.
Voice control (Alexa) not responding.	Verify the speaker is connected to Wi-Fi and your Alexa account is linked. Ensure you are speaking clearly and within range. Check the microphone button on the speaker to ensure it's not muted.
Poor sound quality or distortion.	Adjust the volume on both the speaker and your connected device. Ensure the speaker is not too close to walls or corners. If using Bluetooth, try moving closer to the speaker to avoid interference.

## TECHNICAL SPECIFICATIONS

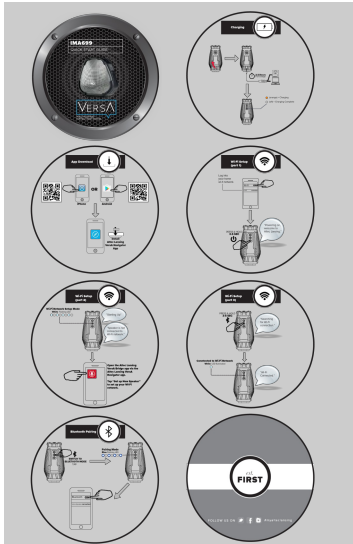
Feature	Detail
Model Name	IMA699

Feature	Detail
Material	Metal
Speaker Type	Multi Room
Special Feature	Portable
Recommended Uses For Product	Music
Compatible Devices	Smartphone, Tablet, Laptop
Controller Type	vera, Amazon Alexa
Color	Silver
Battery Life	8 Hours
Included Components	speaker
Is Waterproof	True (IP67 rated)
Number of Items	1
Control Method	Voice
Wireless Communication Technology	Bluetooth, Wi-Fi
Power Source	Battery Powered
Water Resistance Level	Waterproof
Number of Batteries	1 Lithium Ion batteries required.
Bluetooth Range	100 Feet
Connectivity Protocol	Bluetooth, Wi-Fi
Speaker Maximum Output Power	10 Watts
Audio Output Mode	Surround
Mounting Type	Portable
Product Dimensions	8.8 x 4.5 x 9.6 inches
Item Weight	4.2 pounds
UPC	021331753724
Manufacturer	Sakar International, Inc.
Date First Available	January 12, 2018

## WARRANTY AND SUPPORT

Altec Lansing products are designed for durability and performance. For specific warranty information, please refer to the Quick Start Guide included in your package or visit the official Altec Lansing website. For technical support, troubleshooting assistance, or to inquire about replacement parts, please visit [alteclansing.com](http://alteclansing.com) or contact their customer service directly.

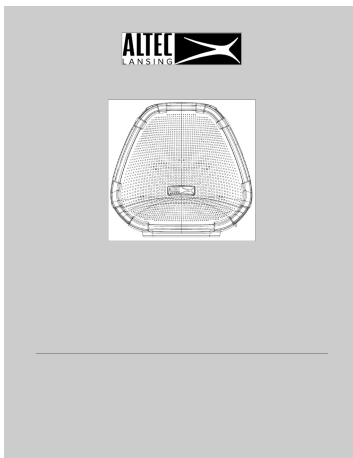
## Documents - Altec Lansing – IMA699



### [Altec Lansing IMA699 Versa Smart Speaker Quick Start Guide](#)

A quick start guide for the Altec Lansing IMA699 Versa Voice Assistant Portable Smart Speaker, covering charging, Wi-Fi setup, and Bluetooth pairing.

lang:tl **score:51** filesize: 11.88 M page\_count: 1 document date: 2018-06-27



### [Altec Lansing Versa Smart Voice Assistant Speaker IMA699 User Manual](#)

User manual for the Altec Lansing Versa Smart Voice Assistant Speaker (IMA699). This guide covers speaker features, controls, LED indications, Bluetooth and Wi-Fi connectivity, troubleshooting, and the Altec Lansing Navigator app.

lang:en **score:28** filesize: 947.06 K page\_count: 67 document date: 2017-10-12