



Manuals.plus /

- › CAMLOCKbox /
- › CAMLOCKbox Security Box User Manual

## CAMLOCKbox 19190

# CAMLOCKbox Security Box User Manual

Compatible with Wildgame Innovations Cloak Pro 10 Lightsout Trail Cameras (Model 19190)

## 1. PRODUCT OVERVIEW

---

The CAMLOCKbox Security Box is designed to provide robust protection for your Wildgame Innovations Trail Cameras, specifically compatible with the Cloak Pro 10 Lightsout series (Model 19190). Constructed from heavy 16-gauge steel, this security box safeguards your trail camera from environmental elements, potential theft, and damage from wildlife. Its design ensures a snug fit, allowing for easy camera removal and installation without disturbing the camera's original positioning.

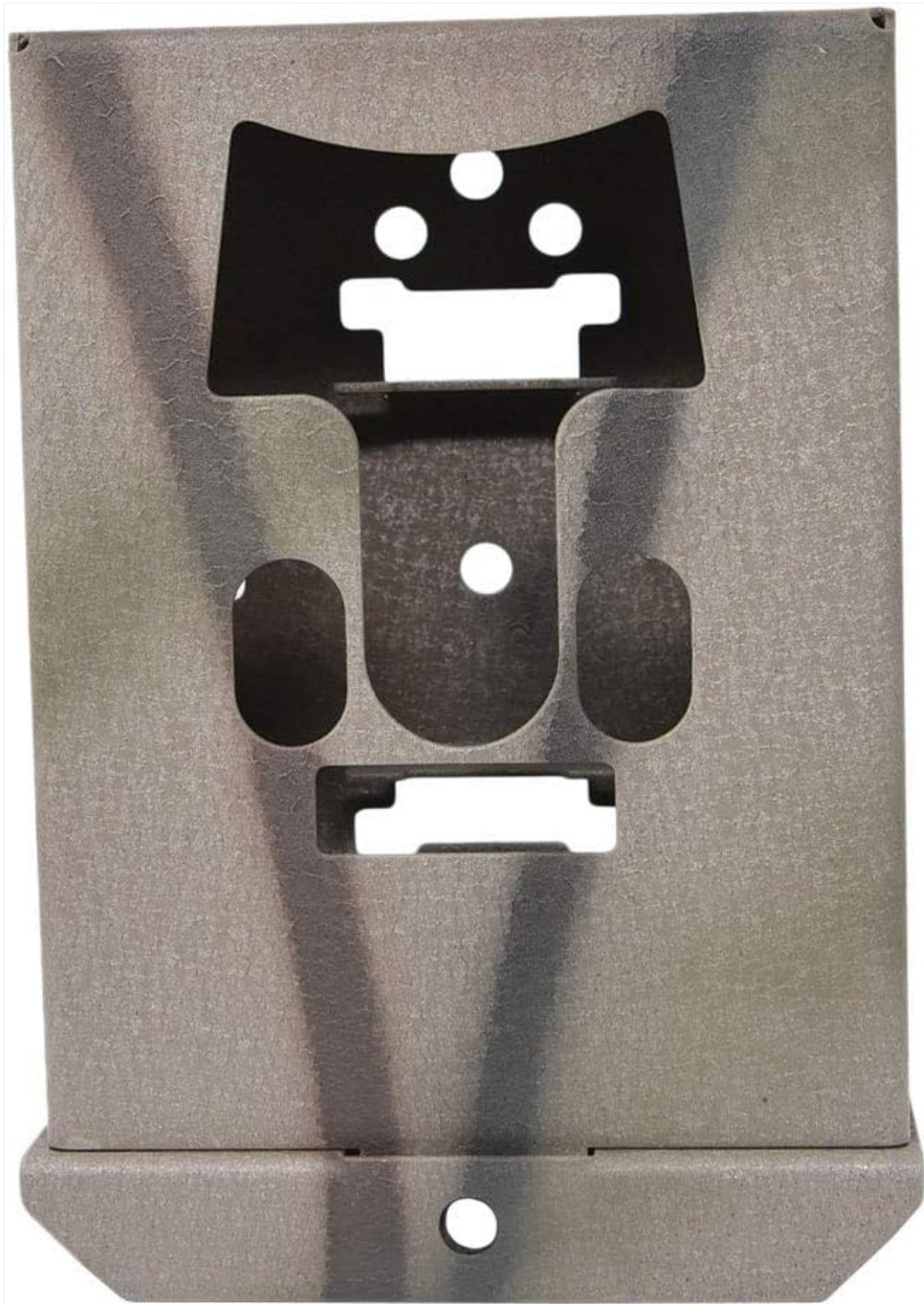


Figure 1.1: Front view of the CAMLOCKbox Security Box, showcasing its camouflage finish and precise cutouts for camera lens and sensors.

## 2. PACKAGE CONTENTS

---

Verify that all items are present in your package:

- 1 x CAMLOCKbox Security Box (Model 19190)



Figure 2.1: The CAMLOCKbox Security Box, shown with its front plate separated from the main body, illustrating the two primary components.

### 3. KEY FEATURES

---

- **Steel Construction:** Manufactured from heavy 16-gauge steel, ensuring durability and precise camera fit. This design allows for camera removal and re-insertion without affecting its original aiming point.
- **Powder Coating:** Features a durable powder-coated finish with a Camo Break-up paint application, providing protection against environmental elements and blending with natural surroundings.
- **Versatile Attachment Options:** Can be secured to trees using lag bolts, bungee cords, or belts. Once attached, the camera can be inserted or removed without needing to reposition the box.
- **Lock Compatibility:** Fully compatible with 5/16 inch Python cable locks and standard padlocks for enhanced security.
- **Enhanced Protection:** Acts as a deterrent against theft and prevents damage to the trail camera from animals and harsh weather conditions.
- **External Power Access:** Strategically placed holes allow for external power hookup to the trail camera while it is secured within the box.



Figure 3.1: Angled view of the security box, highlighting the various mounting holes on the sides and back for flexible attachment options.

## 4. SETUP AND INSTALLATION

---

Follow these steps to install your CAMLOCKbox Security Box and secure your trail camera:

1. **Choose Location:** Select a suitable location for your trail camera, ensuring it provides the desired field of view.
2. **Mount the Box:**
  - **Lag Bolt:** Use appropriate lag bolts to secure the box directly to a tree or post through the designated holes. Ensure a secure and stable attachment.
  - **Belt/Bungee:** Thread a security belt or bungee cord through the slots on the back of the box and around the tree. Tighten securely to prevent movement.

- **Python Cable (Optional):** For public land or added security, thread a 5/16 inch Python cable lock through the designated holes and around the tree.



Figure 4.1: The security box shown from an angle, illustrating how it can be mounted to a tree using a strap or bolts.

3. **Insert Trail Camera:** Once the security box is firmly mounted, open the front of the box. Carefully slide your Wildgame Innovations Cloak Pro 10 Lightsout Trail Camera into the box. The box is designed for a snug fit.
4. **Close and Lock:** Close the front of the security box. If desired, secure it with a padlock through the designated holes for additional theft deterrence.
5. **External Power (Optional):** If using external power, route the cable through the provided access holes before closing the box.

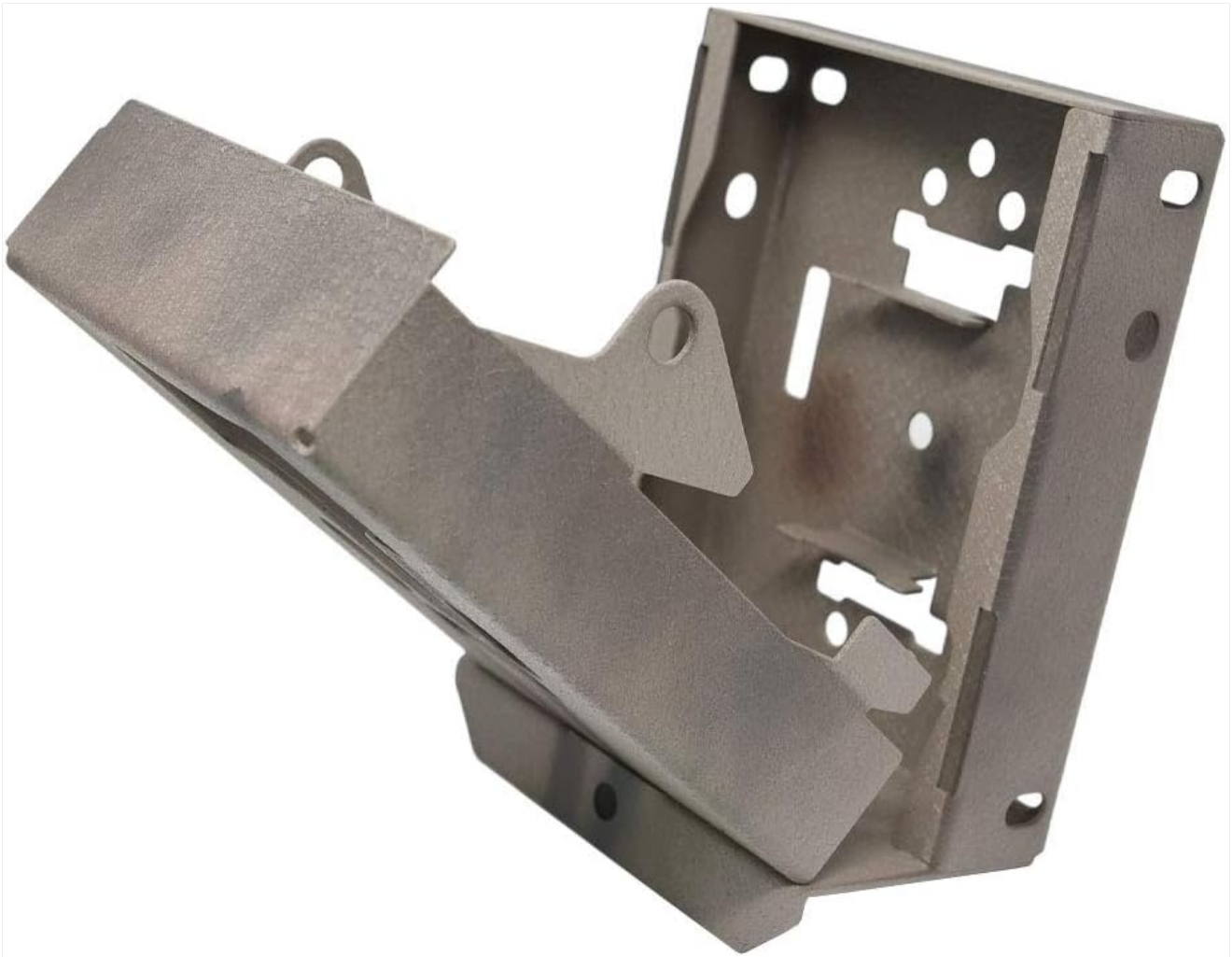


Figure 4.2: Interior view of the security box with the front panel open, demonstrating the internal structure designed to cradle the trail camera.

## 5. OPERATING INSTRUCTIONS

---

The CAMLOCKbox Security Box primarily serves as a protective enclosure. Its operation is straightforward:

- **Camera Access:** To access your trail camera for battery changes, SD card retrieval, or settings adjustments, simply unlock (if applicable) and open the front panel of the security box.
- **Camera Removal/Insertion:** The snug fit allows for easy removal and re-insertion of the camera without needing to re-aim the entire setup. Once the camera is back in place, close and secure the front panel.



Figure 5.1: Side view of the security box in an open position, illustrating the robust hinge mechanism that allows for easy access to the camera.

## 6. MAINTENANCE

---

The CAMLOCKbox Security Box is designed for minimal maintenance due to its durable steel construction and powder-coated finish. However, periodic checks are recommended:

- **Inspect Mounting:** Periodically check the mounting method (lag bolts, belt, bungee, or cable lock) to ensure it remains secure and tight. Environmental factors can cause loosening over time.
- **Clean Exterior:** If the box becomes excessively dirty, wipe it down with a damp cloth to remove dirt, mud, or debris. Avoid abrasive cleaners that could damage the finish.
- **Check for Damage:** Inspect the steel body for any signs of significant impact damage or corrosion, especially if

exposed to harsh weather conditions.

## 7. TROUBLESHOOTING

---

Given the passive nature of a security box, troubleshooting is generally limited to installation and physical integrity issues.

Problem	Possible Cause	Solution
Box feels loose after installation.	Mounting hardware (bolts, belt, bungee) is not sufficiently tightened or has loosened over time.	Re-tighten lag bolts, adjust and secure belts/bungees, or re-thread cable locks to ensure a snug fit against the mounting surface.
Camera does not fit snugly inside the box.	Incorrect camera model or box model.	Ensure your trail camera is a Wildgame Innovations Cloak Pro 10 Lightsout model (or compatible variant) and that the security box is Model 19190.
Difficulty opening/closing the box.	Debris in hinge or latch mechanism; minor deformation.	Clear any debris from the hinge and latch areas. Check for any visible deformation of the steel that might impede movement.

## 8. SPECIFICATIONS

---

Attribute	Detail
Brand	CAMLOCKbox
Model Number	19190
Material	Heavy 16-gauge Steel
Color	Black (with Camo Break-up powder coating)
Product Dimensions (L x W x H)	1 x 1 x 1 inches <i>(Note: These dimensions appear to be placeholder values from the source data and may not reflect the actual size required to house a trail camera.)</i>
Item Weight	2.2 pounds
Compatibility	Wildgame Innovations Cloak Pro 10 Lightsout Trail Cameras
Lock Compatibility	5/16 inch Python cable locks, standard padlocks
UPC	641427818115

## 9. WARRANTY AND SUPPORT

---

For specific warranty information or technical support regarding your CAMLOCKbox Security Box, please contact the manufacturer directly. Details are typically available on the product packaging or the manufacturer's official website.

**Manufacturer:** CAMLOCKbox

Please retain your purchase receipt for warranty claims.