

## Manuals+

[Q & A](#) | [Deep Search](#) | [Upload](#)

[manuals.plus](#) /

› [Atlantic](#) /

› [Atlantic Spring Arm TV Mount User Manual](#)

## Atlantic 63607243B

# Atlantic Spring Arm TV Mount User Manual

Model: PN63607243

### IMPORTANT SAFETY INSTRUCTIONS

Please read this manual thoroughly before installation and use. Improper installation or use may cause serious injury or damage. Keep this manual for future reference.

- Ensure the mounting surface can safely support the combined weight of the mount and the TV.
- Do not exceed the maximum weight capacity of 66 lbs (30 kg).
- This mount is designed for TVs between 23 and 65 inches.
- Always use appropriate safety equipment during installation.
- Do not over-tighten screws, as this may cause damage.
- Keep small parts away from children.
- If you have any doubts about installation, consult a qualified professional.

### PRODUCT OVERVIEW

The Atlantic Spring Arm TV Mount provides a full-motion solution for mounting your television, allowing for effortless adjustment in multiple directions. Its robust design ensures your TV is held securely while offering optimal viewing angles.



Front view of the Atlantic Spring Arm TV Mount, showcasing its robust design and articulating arm.

TECHNICAL SPECIFICATIONS

Specification	Detail
Brand	Atlantic
Model Number	63607243B
Compatible TV Sizes	23 - 65 inches
Maximum Load Capacity	66 lbs (30 kg)
Movement Type	Articulating, Full-Motion
Swivel Range	360 degrees
Pan Range	180 degrees (left-to-right)

Material	Heavy-duty Steel
Color	Black
Item Weight	10.5 pounds (4.76 kg)
Product Dimensions	17.72 x 22.24 x 17.72 inches (45 x 56.5 x 45 cm)

## INSTALLATION GUIDE

Follow these steps carefully to ensure proper and secure installation of your TV mount. Professional installation is recommended for optimal safety and performance.

### Step 1: Wall Preparation

Locate a suitable wall stud for mounting. Use a stud finder to ensure the stud is solid and can support the weight. Mark the drilling locations accurately.

### Step 2: Attaching Wall Plate

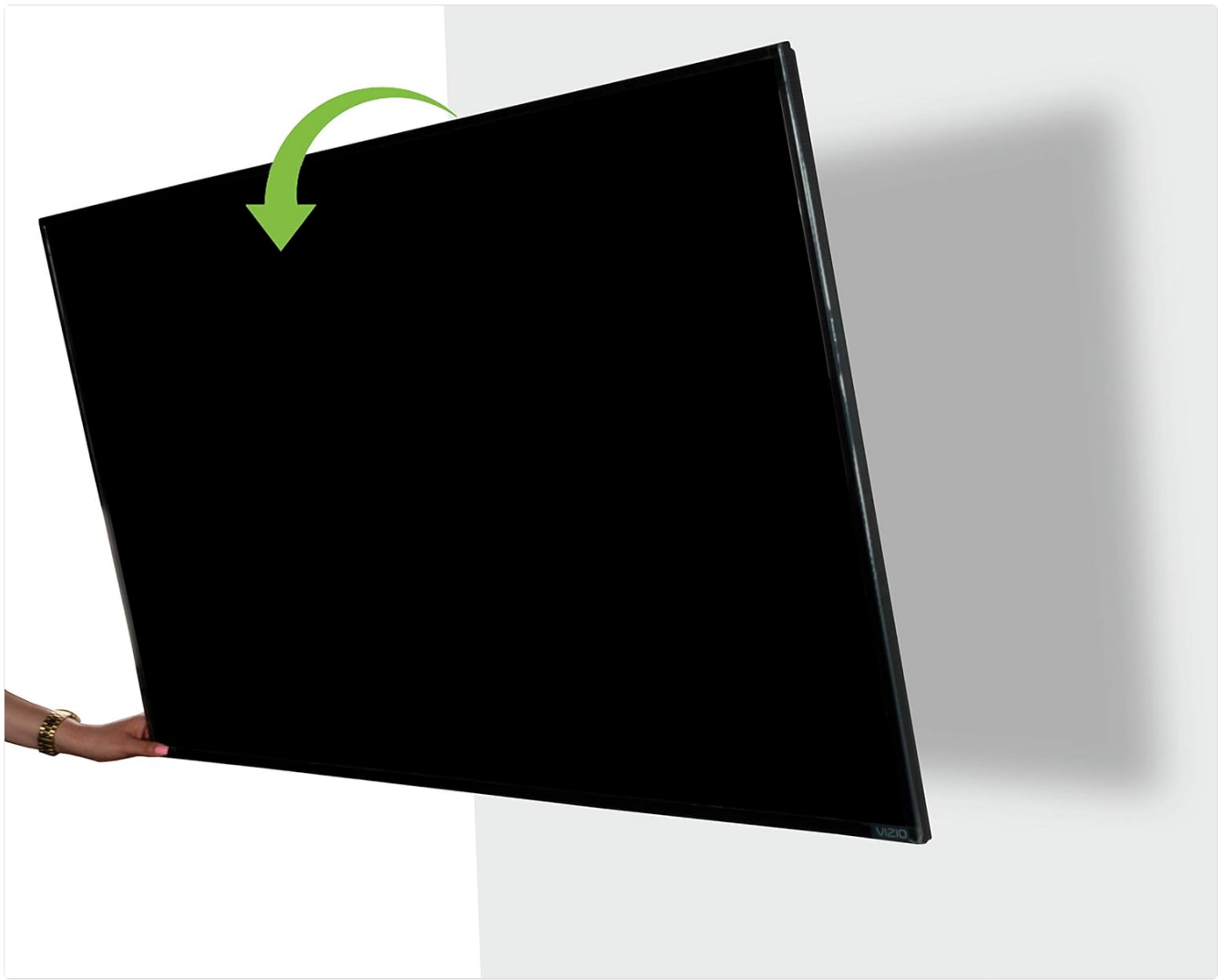
Drill pilot holes at the marked locations. Secure the wall plate of the mount to the wall using the provided lag bolts. Ensure it is level and tightly fastened.

### Step 3: Attaching VESA Plate to TV

Attach the VESA mounting plate to the back of your TV using the appropriate screws. Ensure the screws are compatible with your TV's VESA pattern and are securely tightened.

### Step 4: Mounting TV to Arm

Carefully lift the TV with the attached VESA plate and hook it onto the mount's arm. Secure the TV to the arm using the locking mechanisms or screws as per the detailed instructions in the full PDF manual.



The TV securely attached to the mount arm, ready for adjustment.

### **Step 5: Cable Management**

Utilize the integrated cable management system to route and conceal your TV cables. This helps maintain a clean and organized appearance.



Close-up view of the integrated cable management system, designed to keep wires organized and hidden.

## OPERATING YOUR TV MOUNT

The Atlantic Spring Arm TV Mount offers versatile positioning for optimal viewing. Once installed, you can easily adjust your TV's position.

- **Extension/Retraction:** Gently pull or push the TV to extend or retract the arm from the wall.

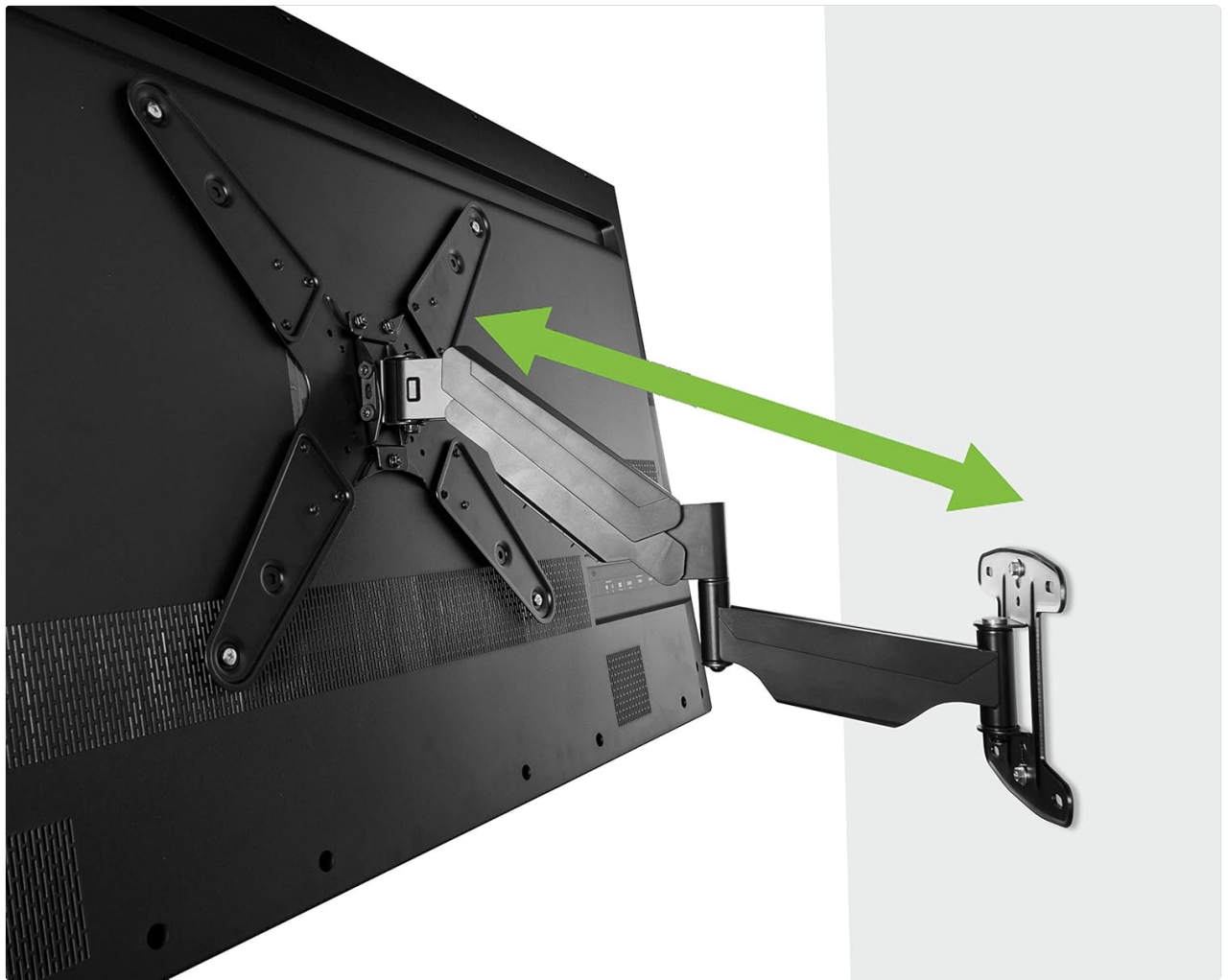


Illustration showing the full extension and retraction range of the TV mount arm.

- **Swivel:** Rotate the TV horizontally to achieve a 360-degree swivel for viewing from different angles in the room.

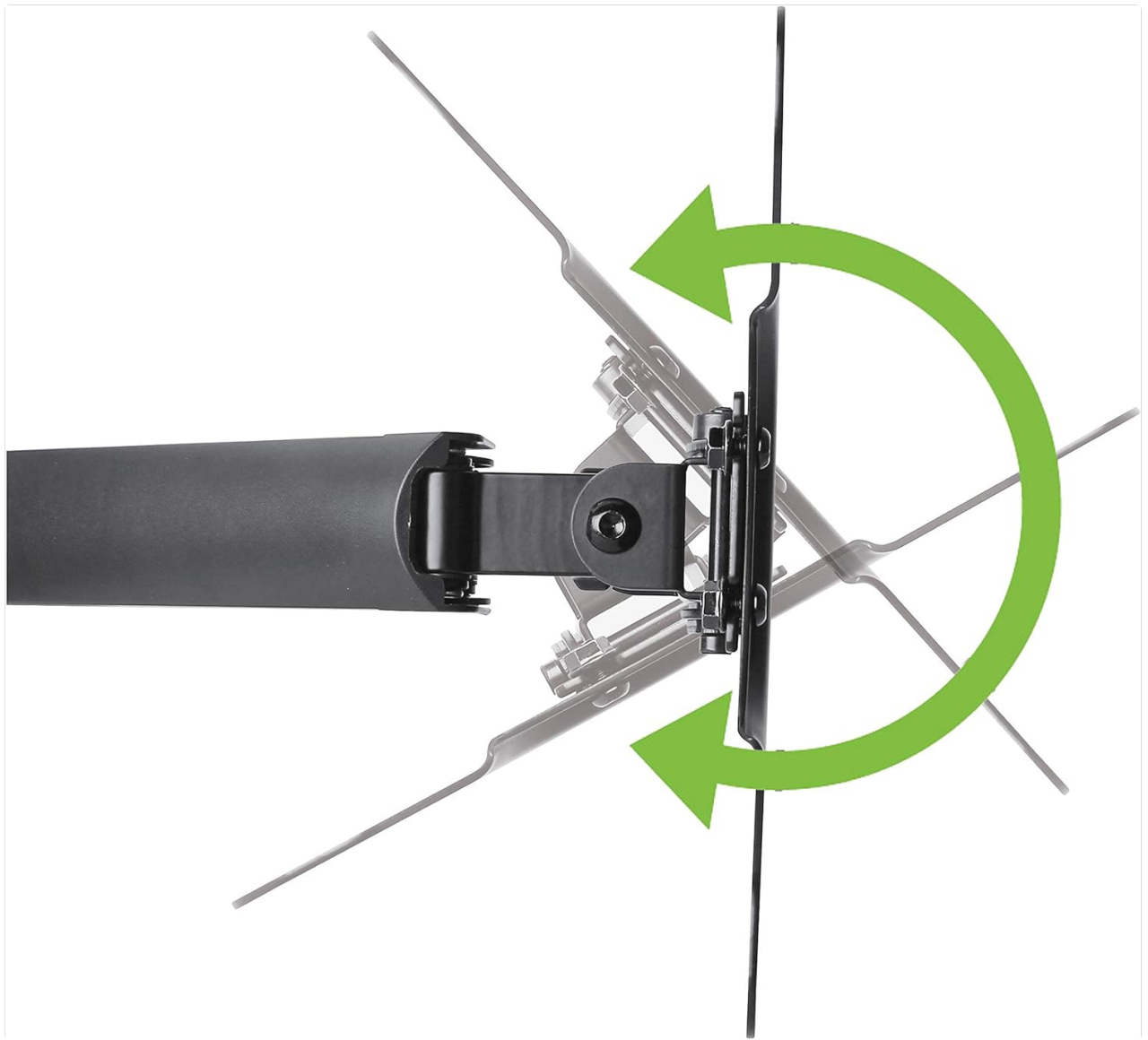


Diagram illustrating the 360-degree swivel capability of the TV mount.

- **Tilt:** Adjust the vertical angle of the TV to reduce glare or optimize viewing height.

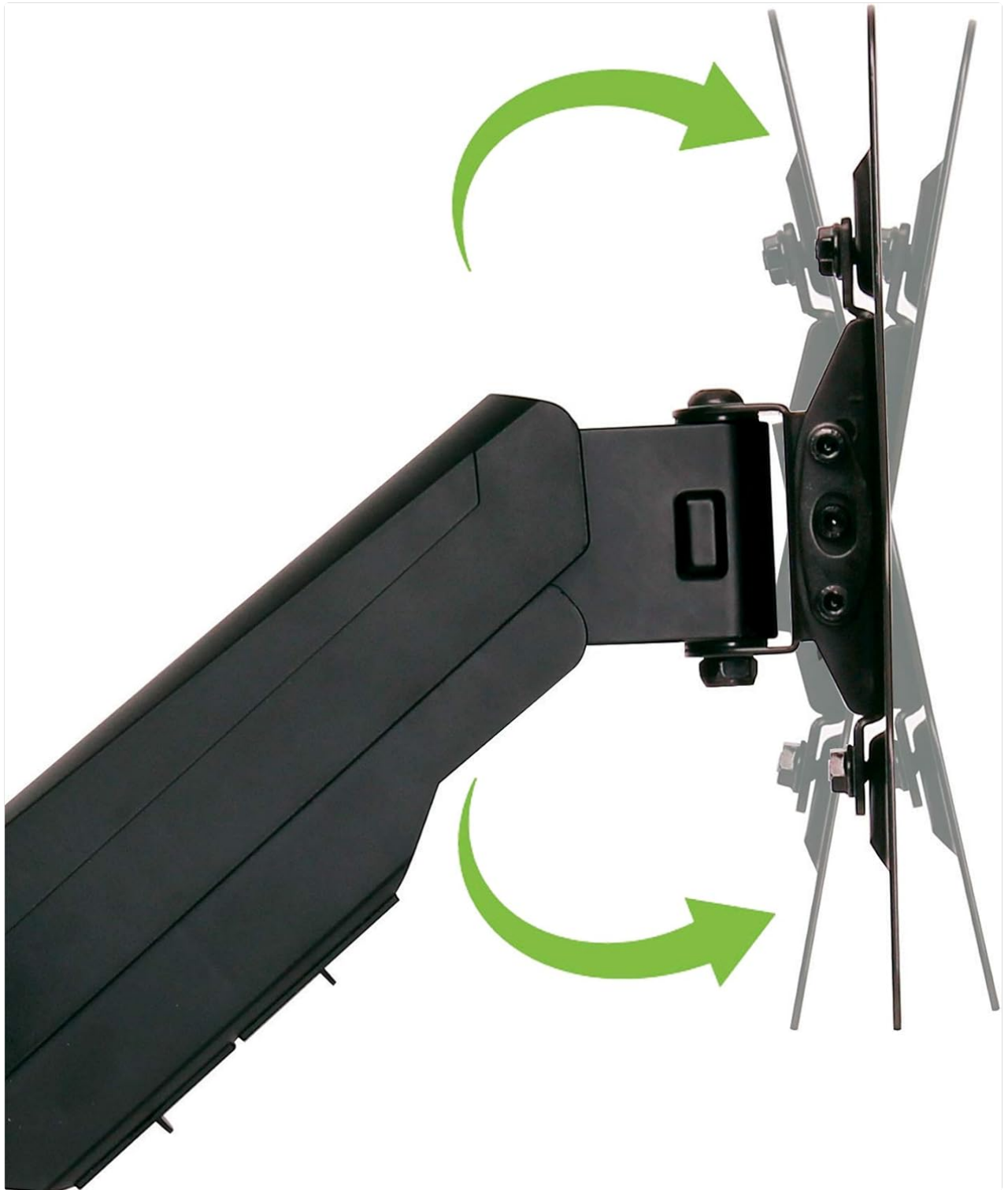


Image demonstrating the vertical tilt adjustment range of the TV mount.

## MAINTENANCE

To ensure the longevity and smooth operation of your Atlantic Spring Arm TV Mount, perform the following maintenance:

- **Cleaning:** Wipe the mount with a soft, dry cloth to remove dust. For stubborn marks, use a slightly damp cloth and mild detergent, then dry thoroughly. Avoid abrasive cleaners.
- **Periodic Checks:** Periodically check all screws and bolts to ensure they remain tight. Re-tighten if necessary.



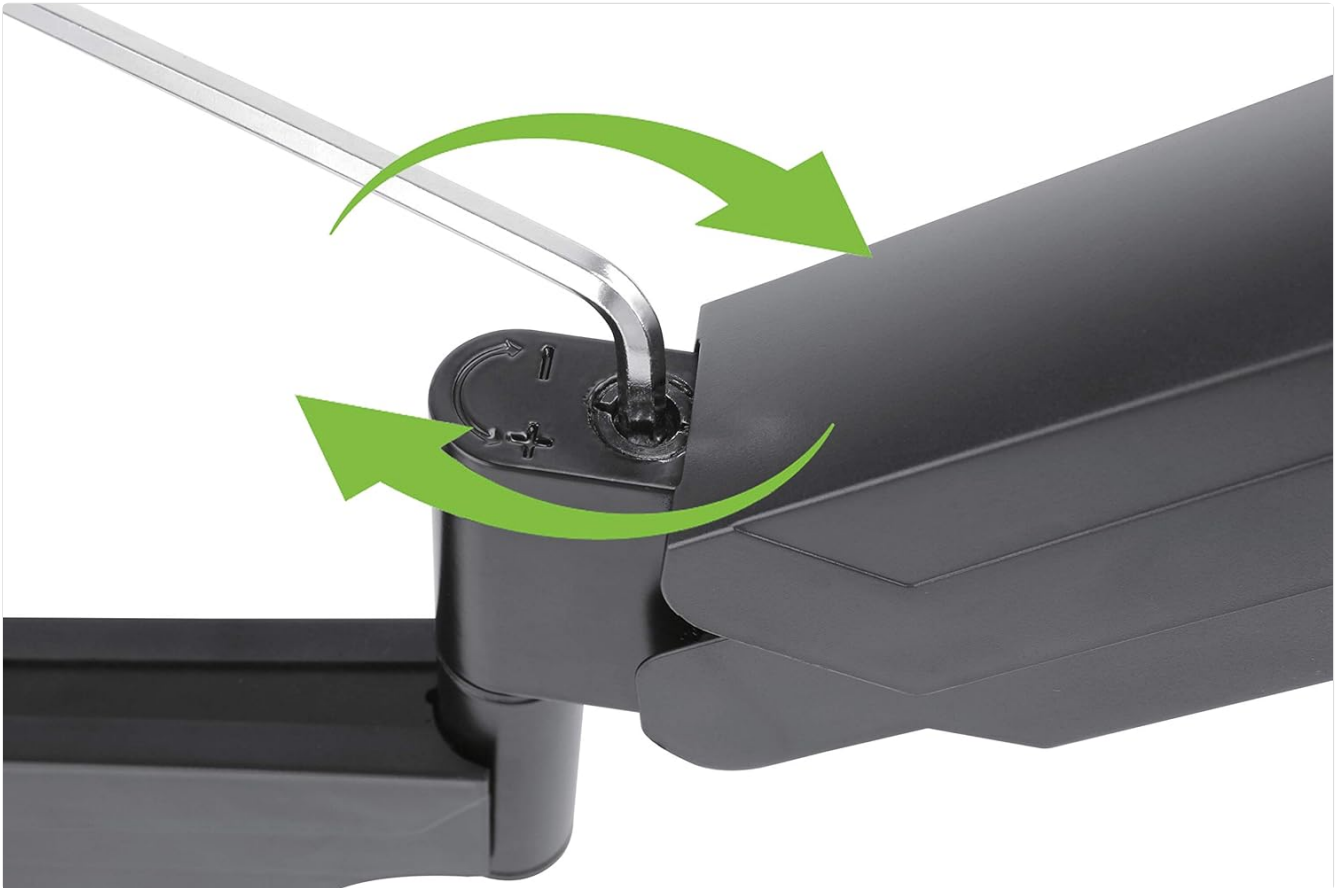
- **Lubrication:** The spring arm mechanism is designed for maintenance-free operation. Do not attempt to lubricate internal components.

## TROUBLESHOOTING

If you encounter issues with your TV mount, refer to the common problems and solutions below. For detailed visual guidance on balance adjustment, please watch the official video provided.

### Arm Balance Adjustment

The spring arm tension needs to be adjusted to match the weight of your TV for effortless movement. This adjustment is crucial for the mount to hold its position correctly.



Locate the balance adjustment screw on the mount arm, typically near a yellow 'ADJUST HERE' sticker.

- **Problem: TV remains in an UP position (TV is too light for current arm settings).**  
**Solution:** Push the TV down to a lower position. Locate the balance adjustment screw (often near a yellow dot/sticker on the arm). Use the hex key to turn the screw **CLOCKWISE**. Test the arm balance after each turn until the TV holds its position easily.
- **Problem: TV droops DOWN after attaching (TV is too heavy for current arm settings).**  
**Solution:** You will likely need an extra set of hands for this. Gently lift the TV to an elevated position. Use the hex key to turn the balance adjustment screw **COUNTER-CLOCKWISE**. Test the arm balance after each turn until the TV holds its position easily.

For a visual demonstration of the balance adjustment process, please refer to the official video below:

Your browser does not support the video tag.

Official video from Atlantic Inc. demonstrating installation and balance adjustment for the Spring Arm TV Mount.

## WARRANTY AND CUSTOMER SUPPORT

Atlantic products are manufactured to high-quality standards. This product comes with a limited warranty against defects in materials and workmanship. For specific warranty details, please refer to the full user manual PDF available for download.

For further assistance, technical support, or warranty claims, please visit the official Atlantic website or contact their customer service department. You can also refer to the comprehensive User Manual (PDF) for more detailed information:

[Download Full User Manual  
\(PDF\)](#)