

Manuals+

[Q & A](#) | [Deep Search](#) | [Upload](#)

Manuals.plus /

- › [Microderm GLO](#) /
- › Microderm GLO MINI Diamond Microdermabrasion and Suction Tool User Manual

Microderm GLO MDG-MINI-GR1802-EU

Microderm GLO MINI Diamond Microdermabrasion and Suction Tool User Manual

Model: MDG-MINI-GR1802-EU

INTRODUCTION

The Microderm GLO MINI is an advanced facial treatment device designed for at-home use. It combines diamond microdermabrasion with suction technology to exfoliate the skin, remove blackheads, and promote a clearer, smoother complexion. This manual provides essential information for the safe and effective use of your device.

PRODUCT COMPONENTS

Your Microderm GLO MINI package includes the following items:

- Microderm GLO MINI Device
- Charging Base
- Diamond Microdermabrasion Tips (Premium and Fine)
- Blackhead Removal Tips (Premium and Fine)
- Replacement Filters (21 pieces)
- Cleansing Brush
- Portable Storage Bag
- USB Charging Cable

Introducing Microderm GLO Mini

Brightens skin tone.
Rebuilds collagen & elastin.

Medical-grade diamond
exfoliation on the go.

Betty Maxwell
Miss America 2016

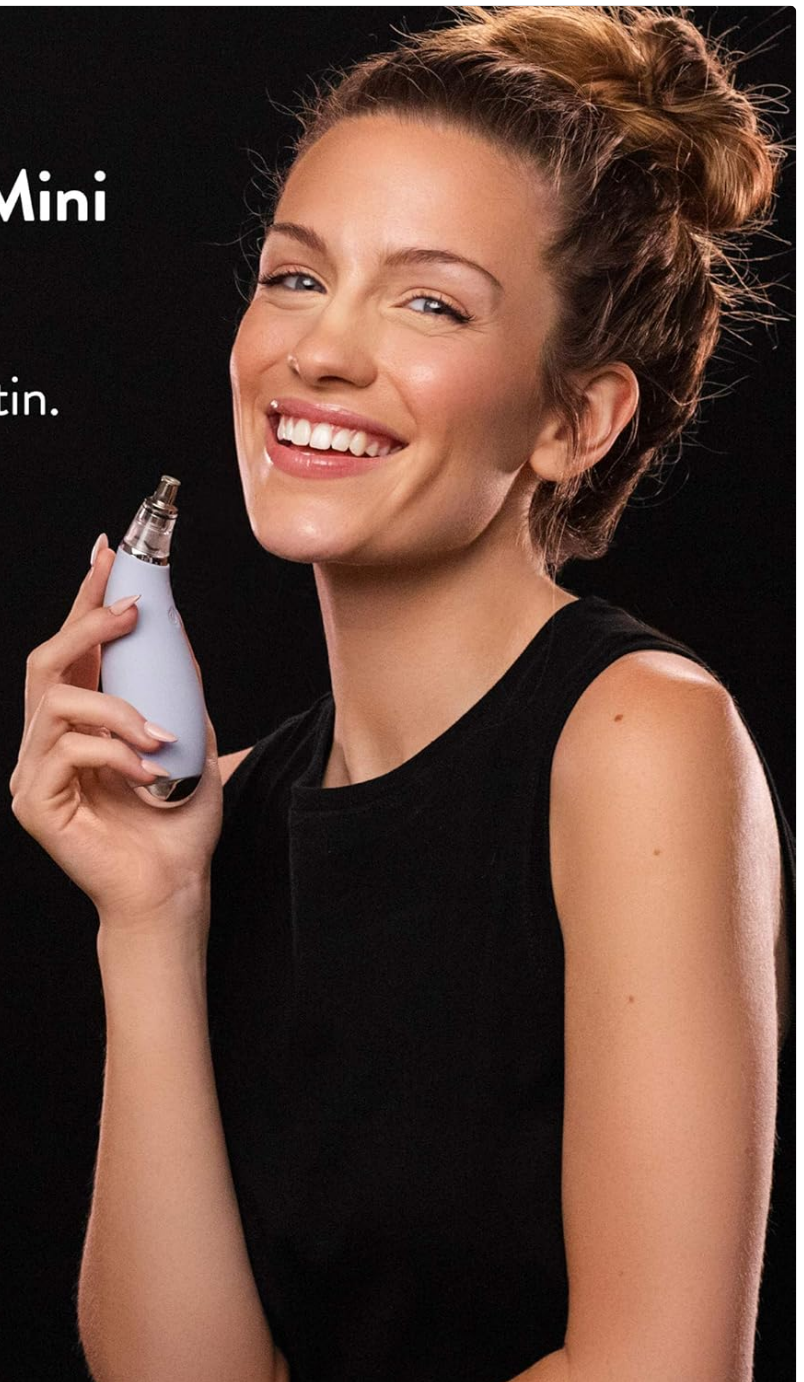


Image: The Microderm GLO MINI device, charging base, and various interchangeable tips, filters, and cleaning brush.

SETUP AND CHARGING

1. **Initial Charge:** Before first use, fully charge the Microderm GLO MINI device. Place the device onto its charging base and connect the USB cable to a power source. The indicator light will show charging status.
2. **Attach a Tip:** Select the desired tip (e.g., Fine Exfoliating Diamond Safe3D™ Tip or Premium Blackhead Remover Tip) and securely attach it to the device. Ensure the tip is firmly in place.
3. **Insert Filter:** Open the device head and insert a new filter into the designated slot. This filter collects dead skin cells and impurities during use.



Image: The Microderm GLO MINI device resting on its charging base, ready for use or charging.



Image: Hands demonstrating how to insert a new filter into the device head before use.

OPERATING INSTRUCTIONS

1. **Prepare Skin:** Cleanse your face thoroughly and pat dry. For best results, consider using a facial steamer to open pores before treatment.
2. **Power On:** Press and hold the power button to turn on the device. The indicator light will illuminate.
3. **Select Suction Level:** Press the power button repeatedly to cycle through the available suction levels. Start with the lowest setting and gradually increase as your skin tolerates.
4. **Treatment Technique:** Brace the skin with your free hand. Place the chosen tip flat against the skin. Using short, even strokes, gently glide the tip across the skin, ensuring it remains flush. Avoid holding the device in one spot for too long to prevent bruising.
5. **Target Areas:** Focus on areas with blackheads, fine lines, or uneven texture. Use the smaller precision tips for delicate areas like around the nose and eyes.
6. **Post-Treatment:** After treatment, apply a hydrating serum or moisturizer to soothe and nourish the skin.

Patented
Diamond Safe3D™
Technology

Easy to use
One-Touch
Operation



Image: A woman demonstrating the proper technique for using the Microderm GLO MINI on her cheek area.



Image: A woman using the Microderm GLO MINI to treat her forehead, focusing on fine lines.

Your browser does not support the video tag.

Video: Official product showcase demonstrating the Microderm GLO MINI's features and usage.

MAINTENANCE AND CARE

- **Clean Tips:** After each use, remove the tip and clean it with the provided cleansing brush and warm, soapy water. Rinse thoroughly and allow to air dry.
- **Replace Filters:** Replace the filter after each treatment to maintain optimal performance and hygiene.
- **Device Cleaning:** Wipe the main device body with a soft, damp cloth. Do not submerge the device in water.
- **Storage:** Store the device and its accessories in the portable storage bag in a cool, dry place.



Image: A close-up view of the various diamond and blackhead removal tips included with the device.

TROUBLESHOOTING

Problem	Possible Cause	Solution
Device does not turn on	Low battery or power button not pressed correctly.	Ensure device is fully charged. Press and hold the power button for 3 seconds to turn on.
No suction or weak suction	Filter is clogged, tip is not properly attached, or device is not fully charged.	Replace the filter. Ensure the tip is securely attached. Fully charge the device.
Skin redness or irritation	Suction level too high or device held in one spot for too long.	Reduce suction level. Keep the device moving across the skin. Ensure skin is properly hydrated before and after use.

SPECIFICATIONS

- **Model Name:** NVD-MGM-GR1802
- **Item Model Number:** MDG-MINI-GR1802-EU
- **Brand:** Microderm GLO
- **Power Source:** 1 Lithium Ion battery (included)
- **Item Weight:** 1 Pound

- **Number of Items:** 1 (device)
- **Number of Pieces:** 20 (accessories)
- **Material Type:** Silicone
- **Color:** Gray
- **Included Components:** 21 pcs Replacement Filters, Cleansing Brush, Premium and Fine Diamond Tips, Storage Bag

WARRANTY INFORMATION

The Microderm GLO MINI comes with a Limited Lifetime Manufacturer Warranty. To activate your warranty, register your product within 30 days of purchase. For online registration and detailed warranty information, please visit the official Microderm GLO website.

SUPPORT AND CONTACT

For further assistance, product inquiries, or technical support, please refer to the official Microderm GLO website or contact their customer service. Licensed professionals are on staff to assist you.

Your browser does not support the video tag.

Video: A brand ambassador providing insights and tips for using the Microderm GLO MINI.