

Esky KF06A

Esky Key Finder Locator User Manual

Model: KF06A

Brand: Esky

INTRODUCTION

Welcome to the Esky Key Finder Locator user manual. This guide provides detailed instructions on how to set up, operate, and maintain your Esky Key Finder Locator, ensuring you can easily find your lost items.

PACKAGE CONTENTS

The Esky Key Finder Locator package includes the following items:

- 1 x Remote Transmitter
- 6 x Receivers (color-coded)
- 1 x Base Stand for Transmitter
- 6 x Keyrings
- 7 x CR2032 Batteries (1 pre-installed in remote, 6 in receivers)
- 3 x Hook-and-Loop Stickers
- 3 x Adhesive Pads
- 1 x User Manual



KEY FINDER

Model: KF06A



Image: Complete package contents of the Esky Key Finder Locator.

PRODUCT OVERVIEW

The Esky Key Finder system consists of a remote transmitter and multiple color-coded receivers, designed for easy item location.



Image: The Esky Key Finder remote transmitter and its six receivers.

Remote Transmitter

The remote transmitter features six color-coded buttons, each corresponding to a specific receiver. Pressing a button activates its paired receiver.

Receivers

The receivers are small, lightweight tags that can be attached to various items. Each receiver emits an 85dB sound and flashes its built-in LED light when activated by its corresponding button on the transmitter.



Image: Front and back of the Esky Key Finder remote transmitter.

SETUP

Battery Installation (Transmitter)

The remote transmitter comes with one CR2032 battery pre-installed. If replacement is needed, please refer to the "Maintenance" section.

Attaching Receivers to Items

The receivers can be attached to your items using the provided keyrings, adhesive pads, or hook-and-loop stickers, depending on your needs.

- For keys, bags, or pet collars, use the provided keyrings.
- For TV remotes, phones, or wallets, use the adhesive pads.
- For items requiring temporary attachment, use the hook-and-loop stickers.

SKU: B00-0445N-02
FCC ID: 2AAXF-KF06A

PO-230308081

US Importer: Thousandshores Inc., 37707 Cherry St, Newark, CA 94560, USA

EU Importer: Thousandshores Deutschland GmbH, Bredowstraße 17, Hamburg 22113, DE

UK Authorised Representative : APEX CE SPECIALISTS LIMITED, 89 Princess Street, Manchester, M14HT, UK

JP Importer : サウザンドショアス株式会社, 東京都渋谷区代々木一丁目44番12号R&Hビル4F

Manufacturer: Shenzhen Thousandshores Technology Co., Ltd, Room 1101, Building B, LotusPlaza, No. 3186 Nanshan Avenue, Majialong Community, Nantou Street, Nanshan District, Shenzhen, China.



Image: Three ways to attach the Esky Key Finder receivers.

OPERATION

Finding a Lost Item

To locate an item, simply press the corresponding color-coded button on the remote transmitter.

The receiver attached to the item will emit a loud 85dB sound and flash its built-in LED light, guiding you to its location. The tracking range is up to 100 feet (30 meters), even through walls, doors, and furniture.

Ultra-long Tracking Distance and Loud Sounds

Beep is **70-85 dB**

50-100 ft

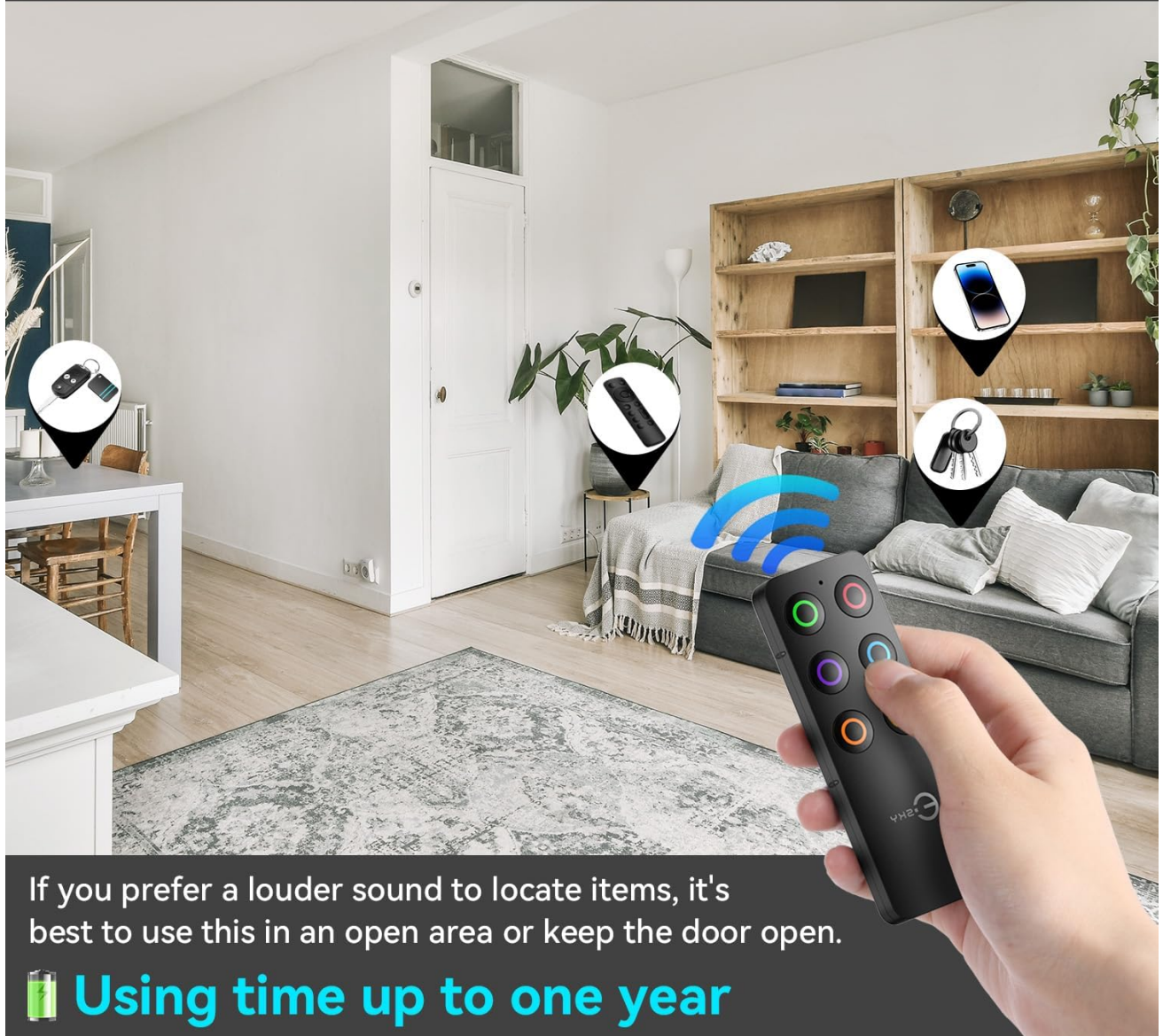
tracking distance



Image: Illustration of the Esky Key Finder's tracking range.

Note: Obstacles like walls may slightly reduce the volume. For best results, use in an open area or keep doors open.

Use in Open Area to Get a Louder Sound



If you prefer a louder sound to locate items, it's best to use this in an open area or keep the door open.



Using time up to one year

Image: Using the Esky Key Finder in an open area for optimal sound.

MAINTENANCE

Battery Replacement for Receivers

Each receiver uses one CR2032 coin battery, which can last up to one year. Follow these steps to replace the battery:

1. Open the receiver cover using a small screwdriver (not included).
2. Carefully remove the old CR2032 battery.
3. Insert a new CR2032 battery with the positive (+) side facing up.
4. Press to close the receiver cover securely.



How to Change Battery for Receiver?

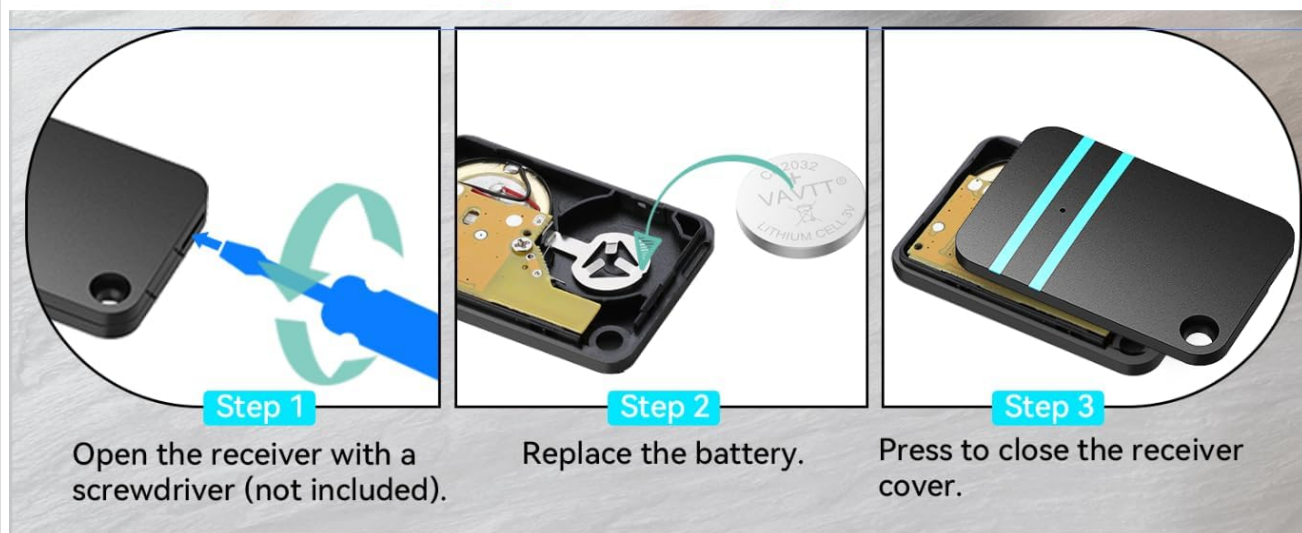


Image: Step-by-step guide for receiver battery replacement.

Battery Replacement for Transmitter

The transmitter also uses a CR2032 battery. To replace, locate the battery compartment on the back of the transmitter, open it, replace the battery, and close the compartment securely.

TROUBLESHOOTING

Receiver not beeping or LED not flashing:

Check if the receiver's battery is dead. Replace the CR2032 battery as described in the "Maintenance" section. Ensure the battery is inserted correctly with the positive (+) side up.

Short tracking range or weak sound:

The range can be affected by thick walls or metal objects. Try moving closer to the general area of the lost item. Ensure there are no significant obstructions between the transmitter and receiver. Replace receiver batteries if they are old.

Transmitter buttons not responding:

Check the battery in the remote transmitter. Replace if necessary.

Accidental activation:

Ensure the transmitter buttons are not being pressed inadvertently when stored.

SPECIFICATIONS

Feature	Detail
Model	KF06A
Sound Level	Up to 85dB
Tracking Range	Up to 100 ft (30 m)
Battery Type	CR2032 (for both transmitter and receivers)
Battery Life	Up to 1 year (receivers)
Material	Acrylonitrile Butadiene Styrene (ABS)
Product Dimensions (Transmitter)	Approx. 4.39" L x 2.16" W x 1.42" Th
Product Dimensions (Receiver)	Approx. 1.85" L x 1.26" W x 0.2" Th
Receiver Weight	Approx. 10g
FCC ID	2AAXF-KF06A
Made In	China

Compact and Light



Image: Dimensions of the Esky Key Finder remote and receiver.

SAFETY INFORMATION

WARNING:

- This product contains a button or coin cell battery.
- A swallowed button cell or coin battery can cause internal chemical burns in as little as 2 hours and lead to death.
- Keep new and used batteries away from children.
- If you suspect a battery has been swallowed or inserted inside any part of the body, seek immediate medical attention.

Dispose of batteries properly according to local regulations. Do not expose the device to extreme temperatures or moisture.





WARRANTY AND SUPPORT

For product support, please contact Esky customer service through their official channels.

This product typically comes with a standard return policy. Please refer to your purchase documentation for specific warranty details and return periods.

© 2024 Esky. All rights reserved.

Related Documents - KF06A

	<p>Esky KF06A Key Finder User Manual and Instructions</p> <p>User manual for the Esky KF06A Key Finder, a wireless item locator system. This guide details how to set up and operate the device, including battery installation for the transmitter and receivers, specifications, and FCC compliance information. Find lost keys, remotes, and other items with this easy-to-use RF locator.</p>
	<p>Esky Remote Key Finder ES-KF02 Instructions</p> <p>User guide for the Esky Remote Key Finder (Model: ES-KF02), detailing its introduction, product diagrams, battery installation for both transmitter and receivers, operation instructions, specifications, and FCC statement.</p>
	<p>ESKY EYAS II Mini RC Aircraft User Manual</p> <p>Comprehensive user manual for the ESKY EYAS II Mini RC aircraft, covering specifications, assembly, pre-flight checks, flying, troubleshooting, and transmitter details.</p>
	<p>Esky HN-28 Solar Hand Crank Radio User Manual - Emergency Weather Radio with Flashlight</p> <p>Comprehensive user manual for the Esky HN-28 Solar Hand Crank Radio. Learn about its features, operation, charging methods (USB, solar, hand crank), and maintenance for this versatile emergency weather radio with flashlight and power bank capabilities.</p>