

Glovii GS8

Glovii GS8 Heated Ski Gloves M User Manual

Model: GS8

1. INTRODUCTION

This manual provides essential instructions for the safe and effective use of your Glovii GS8 Heated Ski Gloves. Please read this manual thoroughly before using the product and retain it for future reference. These gloves are designed to provide warmth in cold conditions, featuring an integrated heating system.

2. SAFETY INFORMATION

- Do not use the gloves if the heating elements or batteries appear damaged.
- Keep batteries away from water, fire, and extreme temperatures.
- Do not puncture, open, or disassemble the batteries.
- If you experience discomfort, excessive heat, or skin irritation, immediately turn off the gloves and remove them.
- Consult a physician before use if you have a medical condition, are pregnant, or have a pacemaker.
- Ensure the charging adapter is compatible with your local power supply.
- Keep out of reach of children.

3. PACKAGE CONTENTS

Verify that all items are present in your package:

- 1 pair of Glovii GS8 Heated Ski Gloves
- 2 Li-Polymer Batteries (included)
- 1 Charger with international adapters

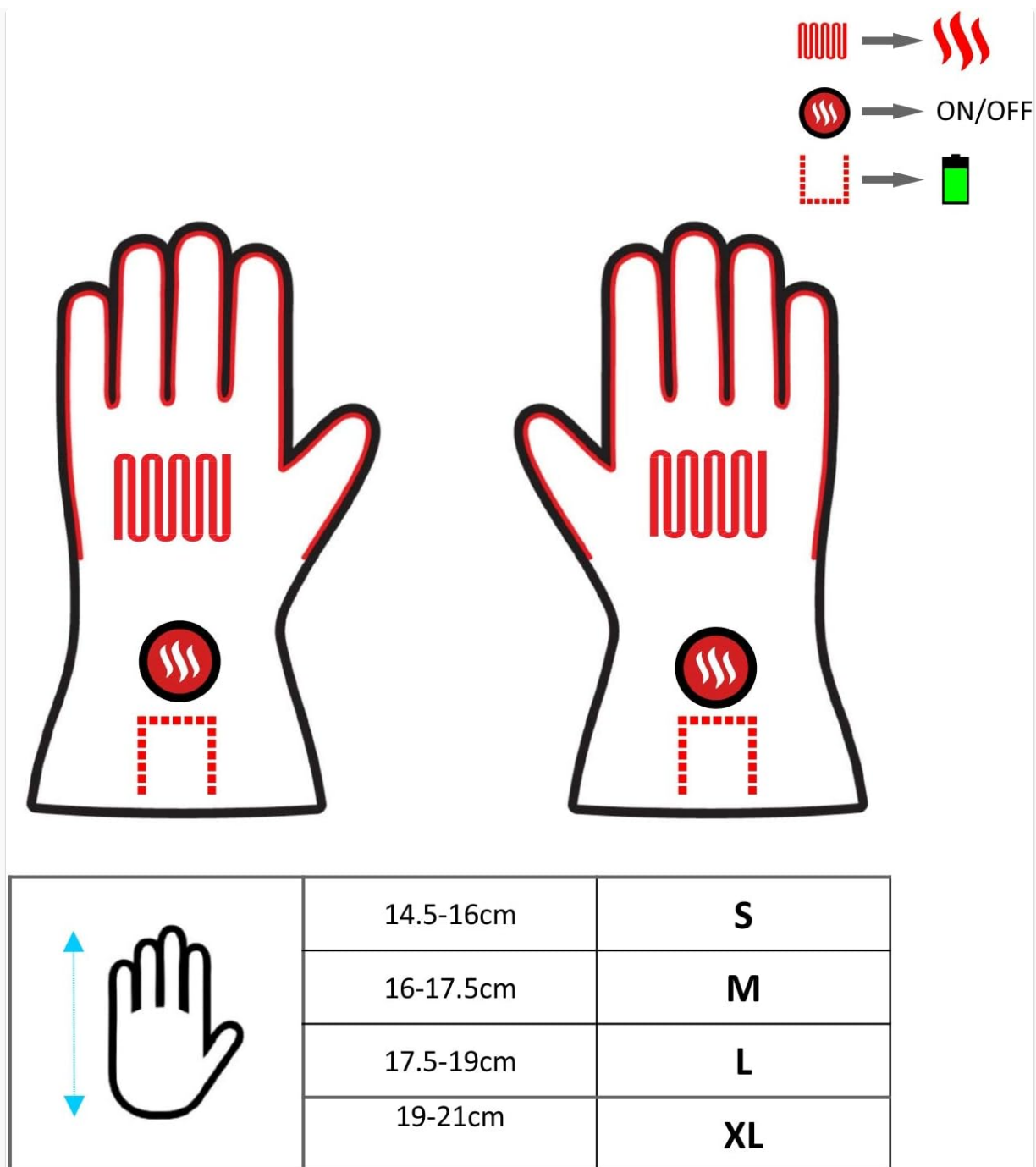


Image: Package contents showing the pair of gloves, two red battery packs, and the charger with various international plug adapters.

4. PRODUCT FEATURES

- **Carbon Fiber Heating Element:** Provides reliable and durable heating, utilizing infrared waves.
- **Li-Poly Battery:** Safe and economical, designed for extended operation.
- **Integrated Battery Pocket:** Convenient storage for the battery within the glove.
- **Waterproof and Breathable:** External Hypora membrane protects against moisture while allowing breathability.
- **Thinsulate Insulation:** Patented 3M fabric for enhanced warmth.
- **Full Palm Heating:** Heating elements are positioned to warm the entire palm area.



Image: A pair of Glovii GS8 Heated Ski Gloves with an overlay illustrating the internal heating elements across the fingers and palm.

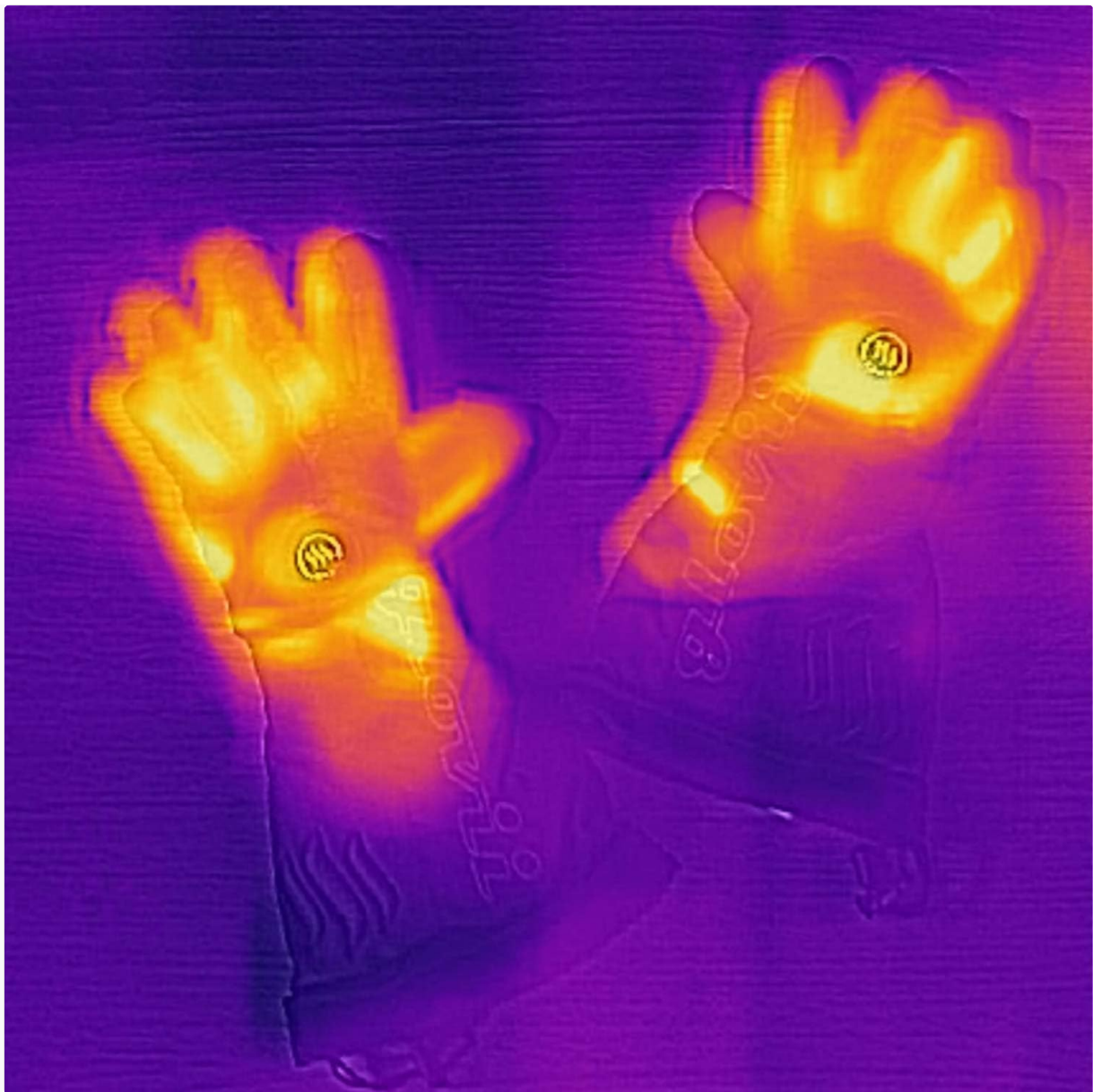


Image: A thermal photograph of the Glovii GS8 Heated Ski Gloves, showing warm areas (yellow/orange) indicating active heating.

5. SETUP

5.1 Charging the Batteries

1. Connect the charger to a power outlet using the appropriate adapter.
2. Connect the two Li-Polymer batteries to the charger.
3. Allow the batteries to charge fully before first use. The charging indicator on the charger will typically change color or turn off when charging is complete.

5.2 Inserting Batteries into Gloves

1. Locate the battery pocket on the cuff of each glove.
2. Carefully insert a charged battery into each pocket.
3. Connect the battery cable from the glove to the battery. Ensure a secure connection.
4. Close the battery pocket securely.



Image: A close-up view of the Glovii GS8 Heated Ski Glove cuff, showing the open battery pocket ready for battery insertion.

6. OPERATING INSTRUCTIONS

6.1 Powering On/Off and Adjusting Heat Levels

Each glove has a control button located on the back of the hand.

1. **To Power On:** Press and hold the control button for approximately 3 seconds. The button will illuminate, indicating the gloves are on.
2. **To Adjust Heat Level:** Briefly press the control button to cycle through the available heat settings (e.g., High, Medium, Low). The color or flashing pattern of the button's light may indicate the current heat level.
3. **To Power Off:** Press and hold the control button for approximately 3 seconds until the light turns off.



Image: A pair of Glovii GS8 Heated Ski Gloves, highlighting the circular control button on the back of each hand.



Image: A detailed close-up of the circular control button on the Glovii GS8 Heated Ski Glove, showing its illuminated state.

7. MAINTENANCE

7.1 Cleaning

- Always remove batteries before cleaning.
- The gloves are designed for **Hand Wash Only**. Do not machine wash, tumble dry, iron, or dry clean.
- Use mild soap and cold water. Gently clean the exterior surface.
- Do not wring or twist the gloves.
- Allow gloves to air dry completely before reinserting batteries or storing.

7.2 Battery Care and Storage

- Charge batteries fully before storing for extended periods.
- Store batteries in a cool, dry place, away from direct sunlight.
- For long-term storage, it is recommended to charge the batteries every 3-6 months to maintain their lifespan.
- Do not store batteries connected to the gloves.

8. TROUBLESHOOTING

- **Gloves not heating:**
 - Ensure batteries are fully charged and correctly inserted.
 - Verify that the battery cables are securely connected to the gloves.
 - Press and hold the power button for 3 seconds to ensure the gloves are turned on.
- **Short heating duration:**
 - Batteries may not be fully charged.
 - Operating on the highest heat setting will consume battery power faster. Try a lower setting.
 - Battery lifespan can decrease over time. Consider replacing old batteries.
- **Charger indicator not working:**
 - Check if the charger is properly plugged into a working power outlet.
 - Ensure batteries are correctly connected to the charger.

9. SPECIFICATIONS

Feature	Detail
Brand	Glovii
Model	GS8
Material	Carbon Fibre, Leather, Nylon, Polyester
Special Features	Breathable, Thermal, Waterproof
Batteries	2 Lithium Polymer batteries (included)
Hand Orientation	Ambidextrous
Product Dimensions	16.2 x 36.5 x 7.2 cm; 270 g
Care Instructions	Hand Wash Only

9.1 Sizing Chart



Image: A sizing chart for Glovii gloves, showing hand circumference measurements corresponding to S, M, L, and XL sizes.

To determine your size, measure the circumference of your hand around the knuckles, excluding the thumb. Refer to the chart above for corresponding sizes.

10. WARRANTY AND SUPPORT

For warranty information or technical support, please contact Glovii customer service through their official website or the retailer from whom you purchased the product. Please have your product model (GS8) and purchase details available when contacting support.