

BINWO BW-LSTICK-02US

BINWO Reusable LED Glow Sticks (2-Pack)

INSTRUCTION MANUAL - MODEL BW-LSTICK-02US

1. Safety Information

Please read all instructions before using the BINWO LED Glow Sticks. Keep this manual for future reference.

- This product is intended for users aged 15 years and older.
- Do not attempt to disassemble or modify the glow stick beyond battery replacement.
- Ensure batteries are inserted correctly according to polarity markings.
- Remove batteries if the product will not be used for an extended period to prevent leakage.
- Dispose of used batteries responsibly according to local regulations.
- Avoid direct eye exposure to the LED light for prolonged periods.

2. Package Contents

The BINWO Reusable LED Glow Sticks package includes:

- 2 x BINWO LED Glow Sticks
- 2 x Detachable Wrist Lanyards
- 6 x AAA Batteries (3 per glow stick, pre-installed)



Image: Two BINWO LED Glow Sticks, shown emitting blue light, with their attached wrist lanyards.

3. Product Overview

The BINWO LED Glow Sticks are designed for various events and uses, offering multiple color options and modes. Each stick is lightweight and durable, made from ABS+PS material.

- **Material:** ABS+PS (Acrylonitrile Butadiene Styrene + Polystyrene)
- **Light Source:** 3-watt LED lamp beads
- **Colors:** 15 selectable colors (including red, blue, yellow, orange, purple, green, pink, magenta, cyan,

dark green, light pink, dark blue, tangerine, light yellow, white)

- **Modes:** Steady On (single color), Automatic Color Changing, Manual Color Changing
- **Power Source:** 3 x AAA batteries (per stick)
- **Battery Life:** Approximately 8-10 hours (depending on usage)
- **Visibility:** 500M to 800M (approximate visible distance)
- **Features:** Detachable lanyard for secure handling



Image: Two glow sticks demonstrating various color outputs, with a visual guide to the 15 available colors.



Image: Detailed view of the 3-watt lamp beads, the light source of the glow stick.

4. Setup

4.1 Battery Installation / First Use

The BINWO LED Glow Sticks come with AAA batteries pre-installed. Before first use, you must remove the insulation film from the battery compartment.

1. Locate the battery compartment cap at the bottom of the glow stick handle.

2. Unscrew the cap to access the battery compartment.
3. Carefully remove the small plastic insulation film located between the batteries and the contact points.
4. Ensure the 3 AAA batteries are correctly oriented according to the polarity (+/-) markings inside the compartment.
5. Replace the battery compartment cap and screw it on securely.

4.2 Attaching the Lanyard

Each glow stick includes a detachable lanyard for secure handling.

1. Thread the thin loop end of the lanyard through the small hole at the base of the glow stick handle.
2. Pass the larger end of the lanyard (with the wrist strap) through the loop you just created.
3. Pull gently to secure the lanyard to the glow stick.



Image: Visual guide to the glow stick's components, including battery placement and lanyard attachment.

5. Operating Instructions

The BINWO LED Glow Stick features two buttons, typically labeled 'A' and 'B', for controlling its functions.

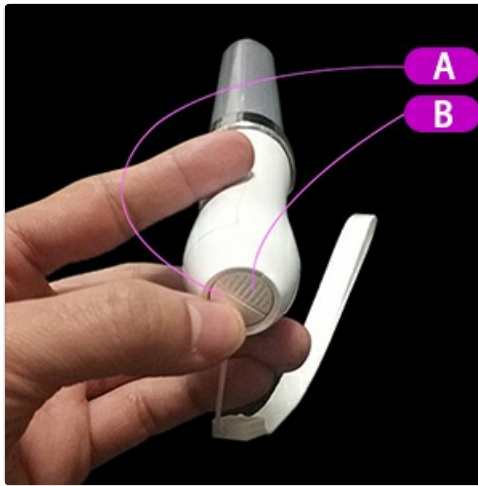


Image: Hand demonstrating the location of buttons A and B on the glow stick handle.

1. **Power On:** Press button 'A' or 'B' to turn on the glow stick.
2. **Single Color Mode:** Press button 'A' to cycle through the 15 available single colors. Each press will advance to the next color.
3. **Automatic Color Changing Mode:** After cycling through all single colors using button 'A', the next press will activate the automatic color changing mode.
4. **Manual Color Changing (Previous Color):** When the unit is off, press button 'B' to activate the manual color changing mode, cycling through colors in reverse order or a different sequence.
5. **Power Off:** To turn off the glow stick, press and hold either button 'A' or 'B' for approximately 2-3 seconds until the light extinguishes.

Operating Instructions

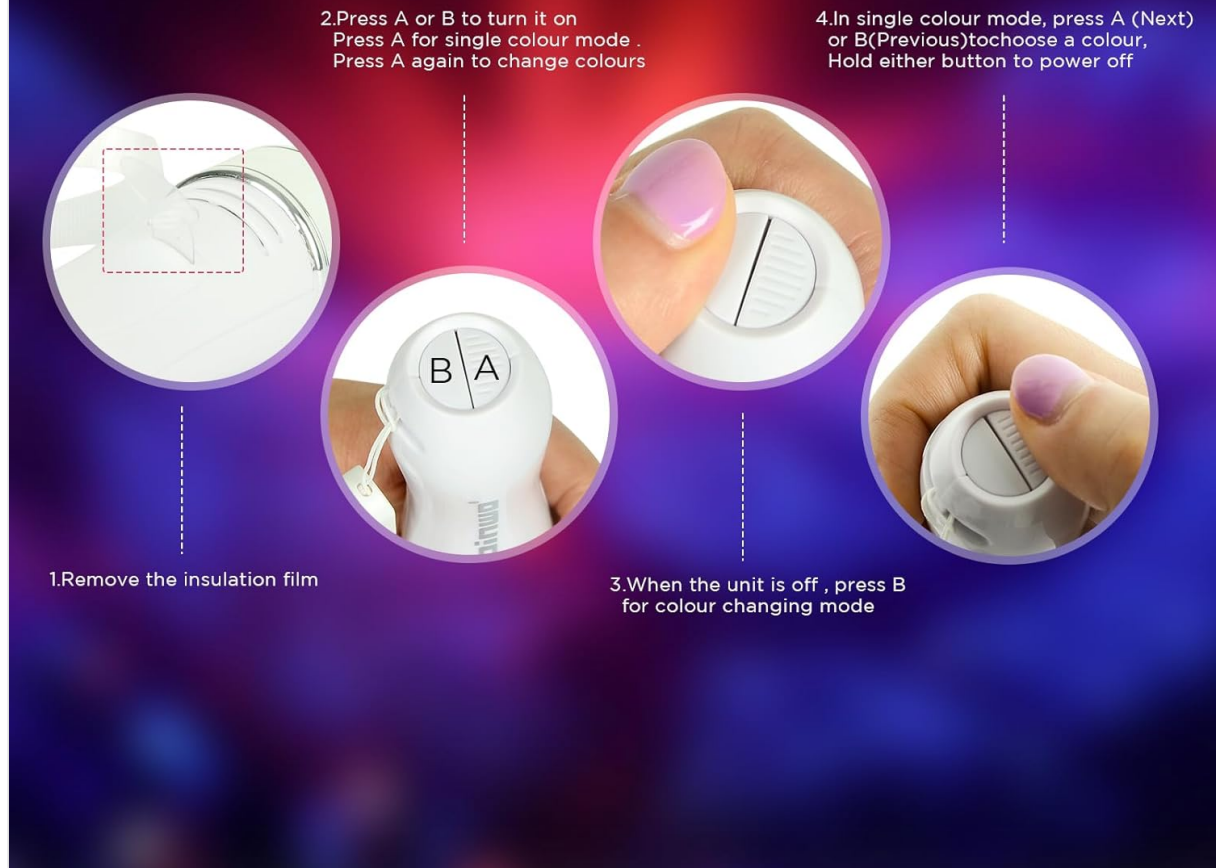


Image: Visual guide to the basic operating steps, including initial setup and button functions.

5.1 Available Colors

The glow stick offers 15 distinct colors:

Magenta

Purple

Orange

Yellow

White

Red

Green

Blue

Cyan

Dark Green

Light Pink

Pink

Dark Blue

Tangerine

Light Yellow



Image: Chart displaying the 15 changeable colors of the glow sticks.

6. Maintenance

6.1 Cleaning

To clean your BINWO LED Glow Sticks:

- Ensure the glow stick is powered off before cleaning.
- Wipe the exterior with a soft, damp cloth.
- Do not use abrasive cleaners or solvents, as these may damage the plastic.
- Avoid submerging the glow stick in water.

6.2 Storage

For optimal longevity:

- Store the glow sticks in a cool, dry place away from direct sunlight.
- If storing for an extended period (more than a month), remove the AAA batteries to prevent potential leakage and damage to the device.

7. Troubleshooting

- **Glow stick does not turn on:**

- Check if the insulation film has been removed from the battery compartment.
- Ensure batteries are inserted with correct polarity (+/-).
- Replace with fresh AAA batteries.

- **Light is dim or flickers:**

- Batteries may be low. Replace all three AAA batteries.
- Ensure battery contacts are clean and free of corrosion.

- **Buttons are unresponsive:**

- Ensure the glow stick has sufficient battery power.
- Try pressing the buttons firmly.

8. Specifications

Feature	Detail
Model Number	BW-LSTICK-02US
Brand	BINWO
Dimensions (L x Diameter)	Approximately 9.9 inches (25 cm) x 1.2 inches (3 cm)
Weight (per stick)	Approximately 4.2 ounces (80g)
Material	ABS + PS Plastic
Power Source	3 x AAA Batteries (included)
Battery Life	8-10 hours (approximate, depending on usage)
Number of Colors	15 Multicolor Options
Modes	Steady On, Automatic Color Changing, Manual Color Changing
Visible Distance	500M - 800M

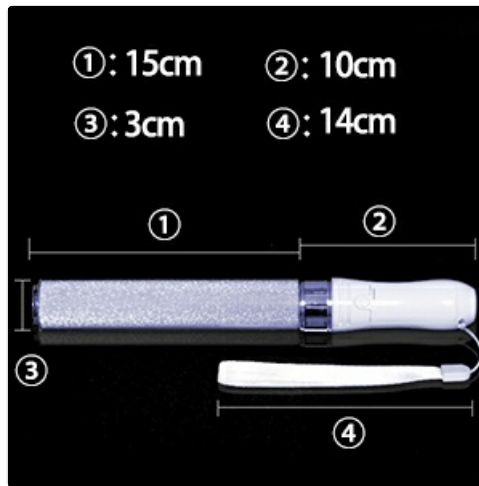


Image: Detailed dimensions of the glow stick components in centimeters.

9. Warranty and Support

BINWO provides a 90-day warranty for this product. For any questions, concerns, or warranty claims, please contact BINWO customer support through your purchase platform.

10. Intended Use

The BINWO LED Glow Sticks are versatile and suitable for various occasions:

- Concerts and Music Festivals
- Raves and Parties
- Camping and Outdoor Activities (for visibility or signaling)
- Emergency Signaling
- Night Runs or Walks (for safety)
- Celebrations and Events

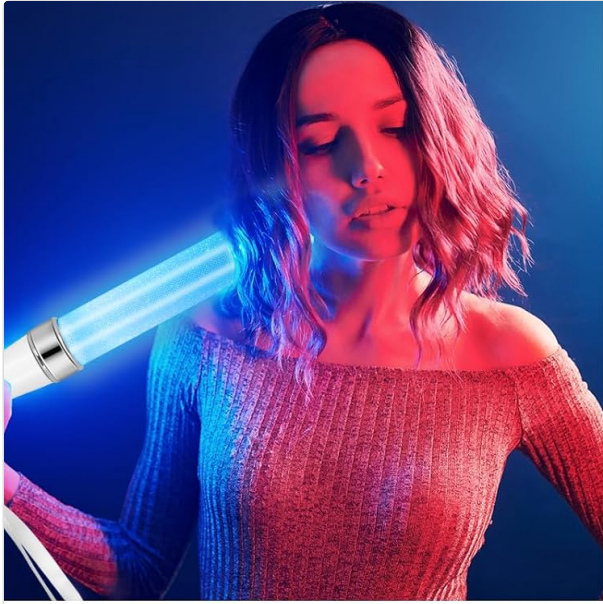


Image: Various scenarios demonstrating the use of BINWO LED Glow Sticks at events and gatherings.



Image: Glow stick used for visibility in a traffic setting.



Image: Glow stick as a potential light source or marker during camping.

Multicolor LED Glow Sticks is everywhere

The image displays five circular icons, each containing a multicolor LED glow stick design. The first icon shows concentric circles, labeled 'concert'. The second shows a running figure, labeled 'night run'. The third shows a tent shape, labeled 'Outdoor camping'. The fourth shows a person fishing, labeled 'Night fishing'. The fifth shows two clinking glasses, labeled 'Dinner party'.

concert night run Outdoor camping Night fishing Dinner party

Image: Icons illustrating various applications for the multicolor LED glow sticks.