

Groz FPM/TP/0-1/N

Groz 47120 Suction Tube User Manual

Model: FPM/TP/0-1/N

1. INTRODUCTION

This manual provides essential information for the proper installation, operation, and maintenance of the Groz 47120 Telescopic Suction Tube. This product is designed as a replacement or accessory for Groz Electric Fuel Transfer Pumps, ensuring efficient and reliable fuel transfer.



Figure 1.1: The Groz 47120 Suction Tube, a two-piece threaded component.

The Groz 47120 Suction Tube is a durable, 2-piece threaded tube, specifically engineered to integrate seamlessly with various Groz FPM fuel pump models. Its 34-inch length provides adequate reach for standard fuel containers.

2. SETUP AND INSTALLATION

Proper installation of the suction tube is crucial for safe and effective operation of your fuel transfer pump. Ensure all components are clean and free of debris before assembly.

2.1 Component Overview

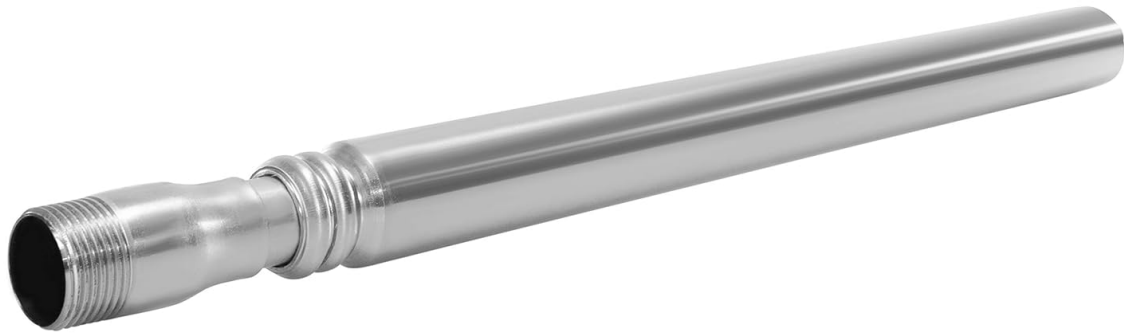


Figure 2.1: Threaded end of the suction tube, designed for secure connection.

The suction tube consists of two threaded sections that connect to form the full 34-inch length. One end features external threading for connection to the pump, while the other end is designed to draw fuel from the tank.

2.2 Assembly Steps

1. **Inspect Components:** Before assembly, carefully inspect both sections of the suction tube for any damage, such as bent threads or cracks. Ensure the threads are clean.
2. **Thread Together:** Align the two threaded sections of the suction tube. Carefully thread them together by hand, ensuring not to cross-thread. Tighten until snug.
3. **Connect to Pump:** Locate the suction inlet on your Groz FPM fuel pump. Thread the assembled suction tube into the pump's inlet. Hand-tighten first, then use an appropriate wrench to secure it firmly, but do not overtighten.
4. **Verify Compatibility:** This tube is compatible with Groz FPM fuel pumps, including models #44040, 44041, 44042, 44043, and 44045. Ensure your pump model is listed for optimal performance.



Figure 2.2: The Groz suction tube fully assembled, ready for connection to a fuel pump.

3. OPERATING INSTRUCTIONS

The Groz 47120 Suction Tube functions as the intake component for your fuel transfer pump. Its operation is directly tied to the pump's functionality.

- **Placement:** Once securely attached to the pump, insert the free end of the suction tube into the fuel tank or container from which you intend to draw fuel. Ensure the end of the tube is submerged in the fuel.
- **Pump Activation:** Activate your Groz FPM fuel pump according to its specific operating instructions. The pump will draw fuel through the suction tube.
- **Monitoring:** During operation, monitor the fuel flow and ensure the suction tube remains properly submerged to prevent air from entering the pump system.

Always follow the safety guidelines provided with your fuel transfer pump when handling flammable liquids.

4. MAINTENANCE

Regular maintenance ensures the longevity and optimal performance of your Groz 47120 Suction Tube.

- **Cleaning:** After each use, especially when transferring different types of fuel or if the tube comes into

contact with contaminants, clean the tube thoroughly. Use a suitable solvent or cleaner for fuel system components.

- **Inspection:** Periodically inspect the tube for signs of wear, corrosion, or damage. Pay close attention to the threaded connections. The tube is made from steel with a coating; inspect for any signs of rust or coating degradation.
- **Storage:** Store the suction tube in a clean, dry environment, away from direct sunlight and extreme temperatures. If detached from the pump, ensure the ends are protected from dust and debris.

5. TROUBLESHOOTING

While the Groz 47120 Suction Tube is a passive component, issues related to its condition can affect pump performance.

- **No Suction or Reduced Flow:**
 - **Check Connections:** Ensure the suction tube is securely threaded into the pump and that its two sections are tightly joined. Loose connections can cause air leaks.
 - **Obstruction:** Verify that the end of the suction tube is not blocked by debris or sediment in the fuel tank.
 - **Submersion:** Confirm the tube's end is fully submerged in the fuel. If the fuel level is too low, the pump may draw air.
- **Tube Damage:**
 - If the tube is bent, cracked, or severely corroded, it may need replacement. Damage can compromise structural integrity and lead to leaks or air ingress.

For pump-specific troubleshooting, refer to the user manual of your Groz FPM fuel transfer pump.

6. SPECIFICATIONS

Key technical specifications for the Groz 47120 Suction Tube:

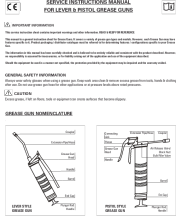

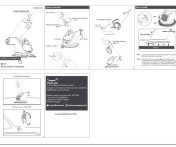


Attribute	Value
Model Number	FPM/TP/0-1/N
Brand	Groz
Length	34 inches (approx. 86.36 cm)
Construction	2-Piece threaded tube
Material	Coated Steel
Compatibility	Groz FPM Fuel Pumps (#44040, 44041, 44042, 44043, 44045)
Item Weight	1.07 Kilograms (2.35 Pounds)

7. WARRANTY AND SUPPORT

For information regarding warranty coverage, technical support, or replacement parts for your Groz 47120 Suction Tube, please contact Groz customer service or visit the official Groz website.

Refer to your original purchase documentation for specific warranty terms and conditions.

Related Documents - FPM/TP/0-1/N

	<p>Groz Grease Gun Service Instructions: Loading & Troubleshooting Guide</p> <p>Comprehensive service instructions for Groz lever and pistol style grease guns. This guide covers detailed loading procedures for cartridge, bulk, suction, and filler pump methods, along with essential priming techniques and troubleshooting tips for common grease gun issues.</p>
	<p>GROZ 20V Cordless Grease Gun: High-Torque, Versatile Tool for Maintenance</p> <p>Discover the GROZ 20V Cordless Grease Gun (CGG), engineered for superior performance and versatility. Features include 10,000 PSI max pressure, 2-speed design, 2000 mAh battery, and a comprehensive accessory kit. Ideal for everyday greasing and maintenance tasks.</p>
	<p>ZEEHOO SC-1 Sticky Suction Cup Mount User Manual and Installation Guide</p> <p>Comprehensive user manual for the ZEEHOO SC-1 Sticky Suction Cup Mount. Learn about product features, installation steps for dashboards and windshields, and customer support information.</p>
	<p>Ford F-650/F-750 Dual Fuel Tank Transfer Issue TSB 07-21-1</p> <p>Technical Service Bulletin (TSB) 07-21-1 for Ford F-650 and F-750 (2004-2008) addressing dual fuel tank fuel transfer problems. Provides diagnostic steps and service procedures for technicians.</p>
	<p>VEVOR Suction Cups User Manual - GPS-1, GPS-2, GPS-1-10</p> <p>User manual for VEVOR suction cups (models GPS-1, GPS-2, GPS-1-10). Includes safety instructions, operation directions, product use, storage, and specifications for lifting non-porous materials.</p>