

TAFFIO 10ZB002

TAFFIO® iCar2 OBD2 Diagnostic Tool User Manual

Model: 10ZB002

1. INTRODUCTION

The TAFFIO® iCar2 is a compact and reliable EOBD OBD2 car vehicle check diagnosis tool designed to self-diagnose any car that supports OBDII protocols. It offers a range of diagnostic capabilities, allowing users to monitor various vehicle parameters and troubleshoot issues.

Key Features:

- Plug and play design with auto sleep mode, eliminating the need to unplug.
- Supports Android, iOS, and Windows operating systems.
- Compatible with all OBDII protocols.
- Equipped with fast and reliable ARM chips for efficient performance.
- Ability to read, erase, and display diagnostic trouble code descriptions.
- Monitors and displays various vehicle parameters including fuel level, consumption, momentum, vehicle speed, oil pressure, coolant temperature, engine load, intake manifold pressure, throttle position, oxygen sensor values, and air intake temperature.
- Functionality to turn off the Malfunction Indicator Lamp (MIL), also known as the "Check Engine" light.



Figure 1: The TAFFIO iCar2 OBD2 Diagnostic Tool, showing its compact design and OBDII connector.

2. COMPATIBILITY

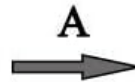
The iCar2 device is designed to be compatible with almost all OBD2 / EOBD compliant vehicles. Please note the following:

- **OBD2:** Supported for vehicles manufactured from 1996 in the USA and 1998 in Canada.
- **EOBD:** Supported for petrol vehicles from 2001 and diesel vehicles from 2003/2004 in Europe.
- **Important Note:** 24V Trucks are not supported by this device.

3. SETUP AND INSTALLATION

Follow these steps to set up your TAFFIO® iCar2 diagnostic tool:

1. **Locate OBD2 Port:** Identify the OBD2 port in your vehicle. It is typically located under the dashboard, near the steering wheel. Common locations include areas A, B, C, D, or E as shown in Figure 2.
2. **Plug in iCar2:** Firmly plug the iCar2 device into your vehicle's OBD2 port. Ensure it is securely connected.
3. **Install Application:** Install a compatible OBD2 diagnostic application on your Android, iOS, or Windows device. Recommended applications include Torque, Dashcommand, OBD Auto Doctor, OBD Car Doctor, OBD Fusion, or GeekOBD (free for iOS/Android).
4. **Connect via Bluetooth:**
 - Enable Bluetooth on your mobile device.
 - Open the installed OBD2 application.
 - Within the app's settings, search for and connect to the iCar2 device via Bluetooth. The device name usually appears as "OBDII" or similar.
 - Once connected, the app will indicate a successful connection to the ECU (Engine Control Unit).



Torque(Android) OBD software developed

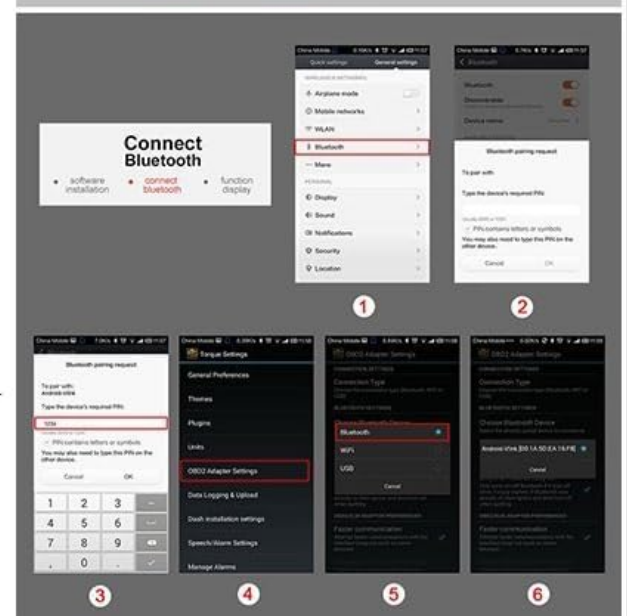
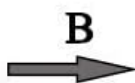


Figure 2: Visual guide for iCar2 installation, showing OBD port locations and typical Android app setup steps for Torque.

4. OPERATING INSTRUCTIONS

Once the iCar2 is connected and the application is set up, you can begin using the diagnostic features:

- **Read and Clear Codes:** Navigate to the "Read Codes" or "DTCs" section in your app to view any active or pending diagnostic trouble codes. Use the "Clear Codes" function to erase them after addressing the underlying issue.
- **Live Data Monitoring:** Access the "Live Data" or "Dashboard" section to view real-time parameters from your vehicle's ECU. This includes:
 - Engine RPM (Revolutions Per Minute)
 - Vehicle Speed
 - Coolant Temperature
 - Fuel System Status

- Short Term Fuel Trim
 - Long Term Fuel Trim
 - Intake Manifold Pressure
 - Timing Advance
 - Intake Air Temperature
 - Air Flow Rate (MAF)
 - Absolute Throttle Position
 - Oxygen Sensor Voltages
 - Fuel Pressure
- **Freeze Frame Data:** When a diagnostic trouble code is set, the ECU stores a "freeze frame" of data, capturing the vehicle's conditions at the moment the fault occurred. This data can be accessed to help diagnose intermittent problems.
 - **I/M Readiness:** Check the Inspection/Maintenance (I/M) Readiness status to see if your vehicle's emission control systems are ready for an emissions test.

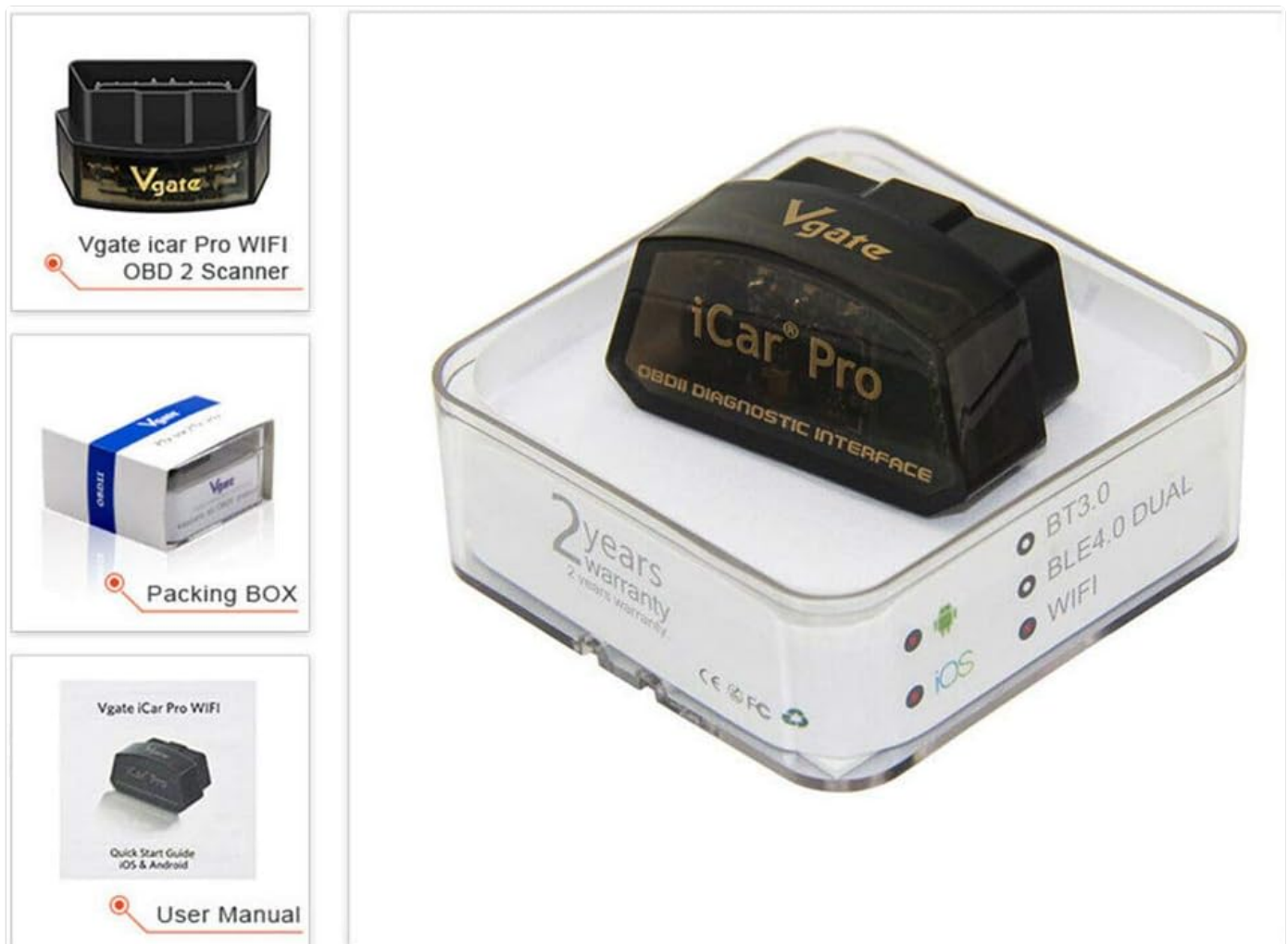


Figure 3: The iCar2 device, its packaging, and included user manual and software CD.

5. TROUBLESHOOTING

If you encounter issues while using your TAFFIO® iCar2, consider the following troubleshooting steps:

- **Device Not Connecting:**
 - Ensure the iCar2 is firmly plugged into the OBD2 port.

- Verify your vehicle's ignition is in the "ON" position (engine can be off).
- Check that Bluetooth is enabled on your mobile device.
- Restart your mobile device and the diagnostic application.
- Try unpairing and re-pairing the Bluetooth connection in your device's settings.

- **App Not Displaying Data:**

- Confirm the app is correctly connected to the iCar2 device (check app's connection status).
- Ensure your vehicle supports the specific OBDII protocols required for the data you are trying to view.
- Update the diagnostic application to its latest version.
- Try a different compatible OBD2 application to rule out app-specific issues.

- **"Check Engine" Light Remains On After Clearing Codes:**

- This indicates the underlying issue causing the code has not been resolved. The code will reappear until the fault is fixed.
- Consult a qualified mechanic if you are unable to identify or fix the problem.

6. MAINTENANCE

To ensure the longevity and optimal performance of your TAFFIO® iCar2 device, follow these simple maintenance guidelines:

- **Cleaning:** Wipe the device with a soft, dry cloth. Do not use liquid cleaners or solvents, as they may damage the electronics.
- **Storage:** Store the device in a cool, dry place away from direct sunlight and extreme temperatures. When not in use, it is recommended to store it in its original packaging or a protective case.
- **Handling:** Handle the device with care. Avoid dropping it or subjecting it to strong impacts.
- **Firmware Updates:** Periodically check the manufacturer's website or the associated app for any available firmware updates for the iCar2 device, if applicable.

7. SPECIFICATIONS

| Feature | Detail |
|--------------------------------|--|
| Model Number | 10ZB002 |
| Brand | TAFFIO |
| Connectivity | Bluetooth (Supports Android, iOS, Windows) |
| Supported Protocols | All OBDII protocols |
| Operating System Compatibility | Android, iOS, Windows |
| Power Supply | Via OBD2 port (12V vehicle battery) |
| Item Weight | 2.2 pounds |
| Manufacturer | Real Media Shop |

| Feature | Detail |
|----------------------|-------------------|
| First Available Date | December 21, 2017 |

8. WARRANTY INFORMATION

The TAFFIO® iCar2 diagnostic tool comes with a **2-year warranty**. Please retain your proof of purchase for warranty claims. For detailed warranty terms and conditions, refer to the documentation included with your product or contact the manufacturer directly.

9. SUPPORT AND CONTACT





For further assistance, technical support, or inquiries, please refer to the following resources:

- **Software CD:** The product includes a Software CD with drivers and additional resources.
- **Handbook:** A detailed handbook is provided with the product for comprehensive guidance.
- **Online Resources:** Visit the official TAFFIO website or the website of the application developer for FAQs, troubleshooting guides, and software updates.
- **Manufacturer Contact:** For direct support, contact Real Media Shop, the manufacturer of this product.



Related Documents - 10ZB002

| | |
|--|---|
| | <p>TAFPIO LPA07 Modell Navigation & Multimedia Gebrauchsanweisung</p> <p>Umfassende Gebrauchsanweisung für das TAFPIO LPA07 Modell, die Navigation, Multimedia, Bluetooth, CarPlay/Android Auto und Einstellungen abdeckt. Enthält wichtige Sicherheitshinweise und Installationsanleitungen.</p> |
| | <p>TAFPIO LPA07 Model Navigation & Multimedia User Manual</p> <p>User manual for the TAFPIO LPA07 model, detailing its navigation, multimedia features, Bluetooth connectivity, screen mirroring, system settings, troubleshooting, and important safety precautions for automotive use.</p> |

| | |
|---|--|
|  | <p>TAFFIO PX5 Modell: Benutzerhandbuch für Navigation und Multimedia</p> <p>Entdecken Sie die Funktionen Ihres TAFFIO PX5 Navigations- und Multimediasystems mit diesem umfassenden Benutzerhandbuch. Erfahren Sie mehr über Installation, Bedienung, Bluetooth, Navigation und Fehlerbehebung.</p> |
|  | <p>TAFFIO XY-Series Installation Guide</p> <p>Installation guide for the TAFFIO XY-Series car audio system, covering Bose sound system integration, rear camera connections, CAN bus integration, and original USB port usage.</p> |
|  | <p>TAFFIO QC662 Tablet: Navigation & Multimedia User Manual</p> <p>Comprehensive user manual for the TAFFIO QC662 Tablet, covering navigation, multimedia playback, smartphone integration (CarPlay, Android Auto), internet and Bluetooth connectivity, radio functions, sound settings, app management, system configurations, and Canbus setup.</p> |
|  | <p>TAFFIO BMW Android Navigation & Multimedia Player Manual</p> <p>User manual for the TAFFIO BMW Android Navigation and Multimedia Player, covering installation, Wi-Fi, Bluetooth, Mirror Link, DVR, media playback, navigation updates, and system settings for BMW vehicles.</p> |