

yusud KeyLi31-FBA

YUSUD Permanent Match Keychain Lighter with Bottle Opener (Model: KeyLi31-FBA)

Instruction Manual

INTRODUCTION

The YUSUD Permanent Match Keychain Lighter is a multi-purpose tool designed for convenience and utility. It integrates a permanent flint metal match lighter, a beer bottle opener, and an EDC (Everyday Carry) keychain. This compact and portable device is suitable for various outdoor activities such as camping, hiking, and travel, functioning effectively even in wet or cold conditions. The flint starter and adjustable cotton wick are engineered for durability, capable of enduring at least 10,000 strikes.

SAFETY INFORMATION

- **Fuel Requirement:** This device is shipped without fuel. It requires lighter fluid (gasoline or kerosene) to operate.
- **Refilling:** Always refill lighter fluid before use. Remove the match stick and add fluid from the top opening. Do not attempt to unscrew the bottom plastic cap for refilling.
- **Fuel Absorption:** After refilling, allow the match stick to infuse for 1-2 minutes until the cotton core completely absorbs the fuel.
- **Storage:** Store the lighter in a cool, dry place away from direct sunlight and heat sources.
- **Children:** Keep out of reach of children.

SETUP

1. **Unscrew Matchstick:** Unscrew the matchstick from the main body of the keychain lighter.
2. **Initial Flint Preparation:** For first-time use, gently scrape off any black wax coating from the flint strips on the side of the lighter body using the matchstick or a small tool. This exposes the fresh flint for optimal spark generation.
3. **Refill Fuel:** Carefully pour a small amount of lighter fluid (gasoline or kerosene) into the reservoir where the matchstick was removed. Do not overfill.

4. **Soak Wick:** Reinsert the matchstick into the reservoir and allow the cotton wick to soak for 1-2 minutes until it is fully saturated with fuel.

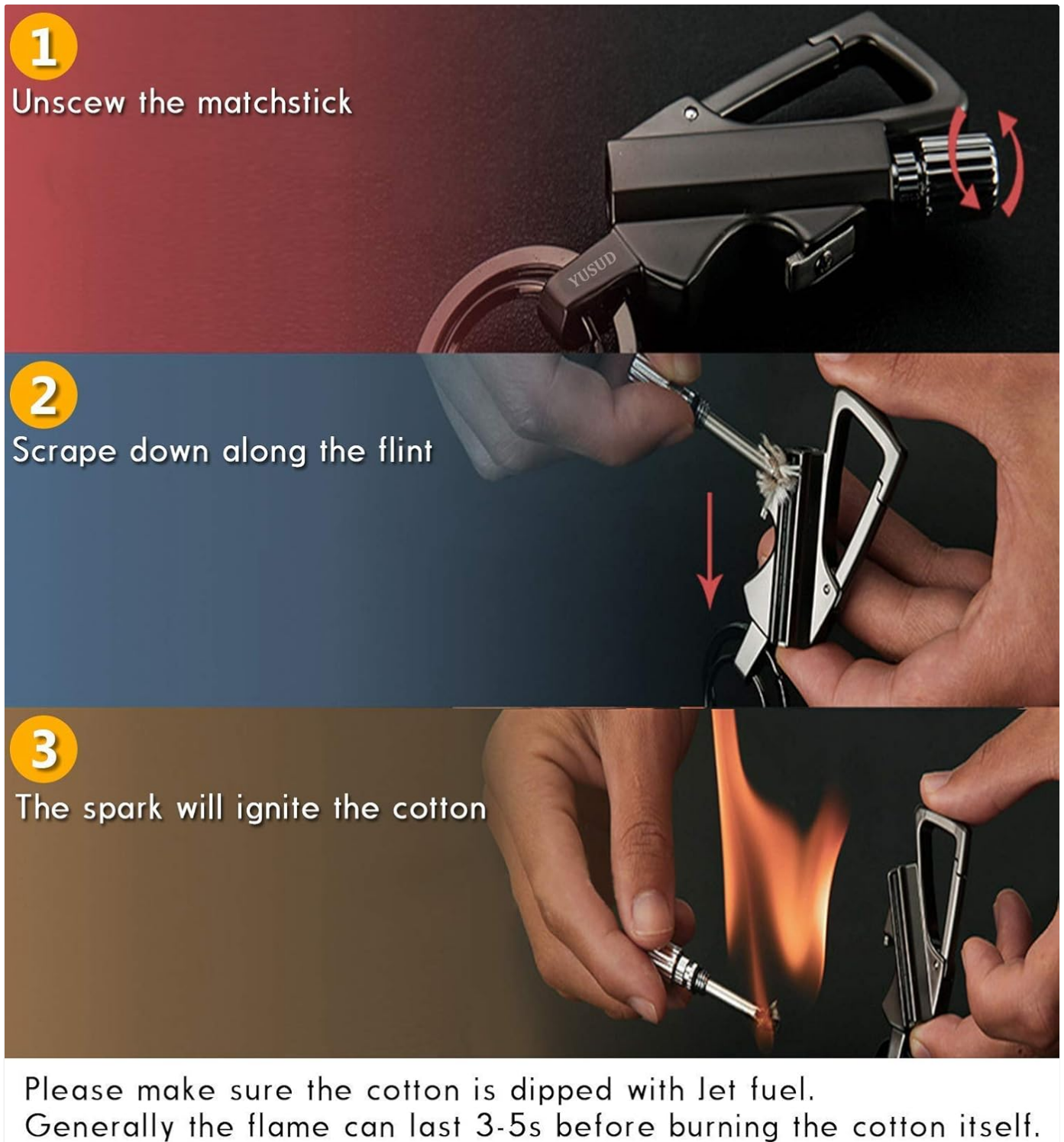


Figure 1: Initial setup and ignition steps.

Video 1: YUSUD Multitool Keychain with Matches - Demonstrates product features, setup, and usage.

OPERATING INSTRUCTIONS

Using the Permanent Match Lighter

1. **Remove Matchstick:** Unscrew and pull out the matchstick from the lighter body.
2. **Strike Flint:** Hold the lighter body firmly. With the matchstick, firmly scrape down along the flint strip on the side of the lighter body. This action will generate sparks.

3. **Ignite Wick:** The sparks will ignite the fuel-soaked cotton wick on the matchstick.
4. **Extinguish:** Once ignited, the flame can last for approximately 3-5 seconds before burning the cotton itself. Carefully return the matchstick to its housing to extinguish the flame.



Figure 2: Proper technique for striking the permanent match.

Using the Bottle Opener

The integrated bottle opener is located on the side of the keychain body. Simply hook it under the bottle cap and apply upward pressure to remove the cap.

Friction Ignition

Can endure **10** thousands times Ignition
convenient and durable



Figure 3: Lighter features, highlighting the bottle opener.

MAINTENANCE

Wick Maintenance and Replacement

Over time, the cotton wick may burn down or become less effective. The matchstick contains a metal wire running through the wick for stiffness. When the wick burns down, use pliers to gently pull the wick further up from the matchstick. If the wick is too short or damaged, it can be replaced with a new one. Ensure the wick length is appropriate for optimal performance.

WHAT IS THE CORRECT LENGTH OF THE WICK?



HOW MUCH FUEL IS CORRECT?

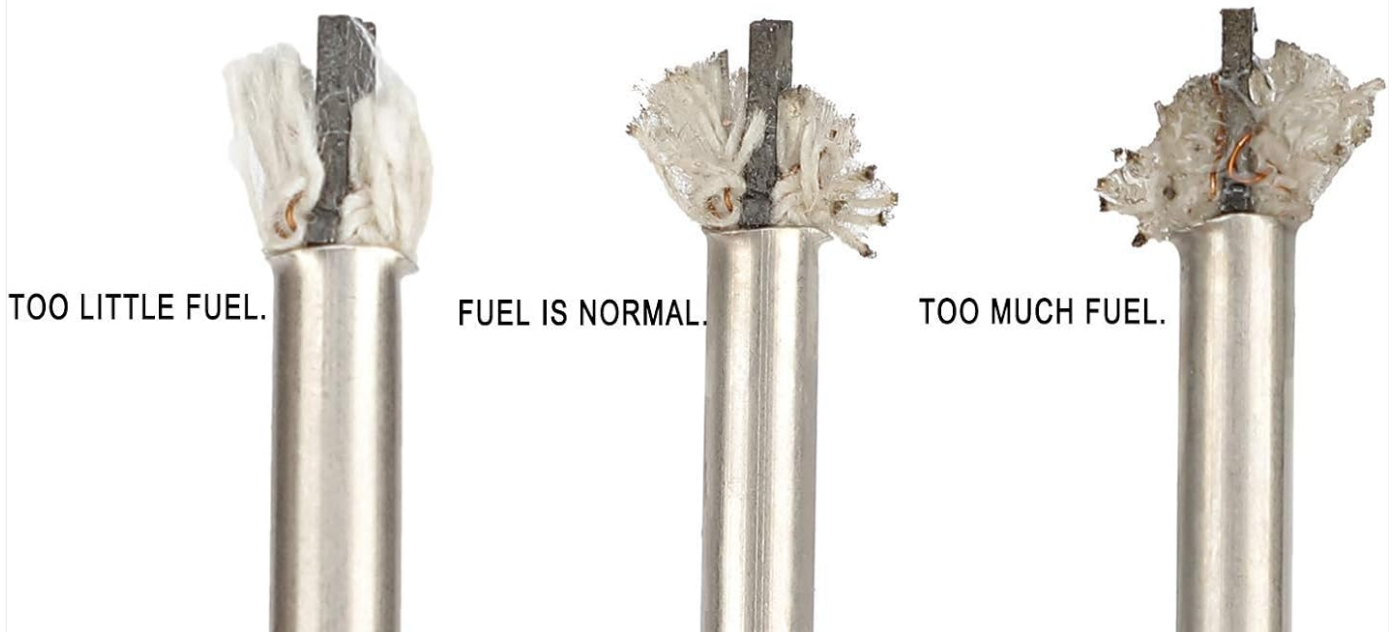


Figure 4: Guide for correct wick length and fuel levels.

Flint Replacement

When the flint no longer produces sufficient sparks, it needs to be replaced. The flint rod is located in the groove on the side of the lighter body. Use a small tool or knife to carefully remove the old flint rod. Cut a new flint rod to the appropriate size (approximately 1.97 inches in length and 2.4mm in diameter). Apply a small amount of B-7000 glue (or similar adhesive) to the groove, then insert the new flint rod and lightly press it to ensure full contact. Allow the glue to cure for about 24 hours, or use hot air to speed up the process. Remember to seal the glue tube after use to prevent drying.



Figure 5: Close-up of the flint mechanism for replacement.

TROUBLESHOOTING

- **Lighter not igniting:**

- Ensure the wick is properly soaked with lighter fluid. Refill if necessary and allow 1-2 minutes for absorption.
- Check the flint for wear. If it's smooth or not producing sparks, replace it as per the maintenance section.
- Ensure you are striking the matchstick firmly and consistently against the flint. New flint rods may require a few more strikes to break in.

- **Fuel leakage:**

- Do not overfill the fuel reservoir.
- Ensure the matchstick is screwed in tightly to create a proper seal.
- Check the O-rings on the matchstick for damage or wear. Replace if necessary to maintain a tight seal and prevent evaporation or leakage.

- **Wick burns too quickly:**

- Ensure the wick is fully saturated with fuel. A dry or partially dry wick will burn faster.
- Avoid prolonged ignition. The lighter is designed for quick, temporary flames.

SPECIFICATIONS

Brand	YUSUD
Model Number	KeyLi31-FBA
Color	Black
Material	Metal
Style	Keychain with Lighter
Item Weight	2 Ounces (approx. 56.7 grams)
Fuel Type	Gasoline or Kerosene (not included)
Product Dimensions	3.5"L x 1.4"W x 0.3"Th (approx. 8.9cm L x 3.6cm W x 0.8cm Th)
UPC	712069264735



Figure 6: Product dimensions.

Friction Ignition

Can endure **10** thousands times Ignition
convenient and durable



Figure 7: Labeled components of the YUSUD Permanent Match Keychain Lighter.

WARRANTY AND SUPPORT

For information regarding product warranty and customer support, please refer to the product packaging or visit the official YUSUD website. Keep your purchase receipt for any warranty claims.

