

B.K.Licht BKL1111

B.K.Licht LED Display Cabinet and Shelf Lighting Kit - Model BKL1111 User Manual

Comprehensive instructions for installation, operation, and maintenance.

1. INTRODUCTION

Thank you for choosing the B.K.Licht LED Display Cabinet and Shelf Lighting Kit, Model BKL1111. This versatile lighting system is designed to enhance your glass shelves, display cabinets, or wardrobes with ambient, color-changing illumination. The kit includes four LED clips, a power adapter, and a remote control for convenient operation. Please read this manual carefully before installation and use to ensure safe and optimal performance.

2. PACKAGE CONTENTS

Verify that all components are present and undamaged upon opening the package:

- 4 x LED Lighting Clips (Chrome finish, suitable for 5-8mm glass thickness)
- 1 x Power Adapter (230V)
- 1 x Remote Control (CR2025 battery not included)
- Connection Cables



Figure 2.1: All components of the B.K.Licht LED Lighting Kit, including four LED clips, power adapter, connection cables, and remote control.

3. SAFETY INFORMATION

Please observe the following safety precautions to prevent injury or damage to the product:

- This product is designed for **indoor use only**. Do not expose to moisture or outdoor elements.
- Ensure the power supply voltage matches the product's requirements (230 Volts).
- Do not attempt to modify or disassemble the product. This will void the warranty and may cause electrical hazards.
- Keep the product out of reach of children.
- Disconnect power before cleaning or performing any maintenance.
- Ensure glass shelves are securely installed and can support the weight of the clips and any items placed on them.

4. SETUP AND INSTALLATION

Follow these steps to install your LED lighting kit:

1. **Prepare the Glass Shelf:** Ensure the glass shelf is clean and dry. The clips are designed for glass thickness between 5mm and 8mm.

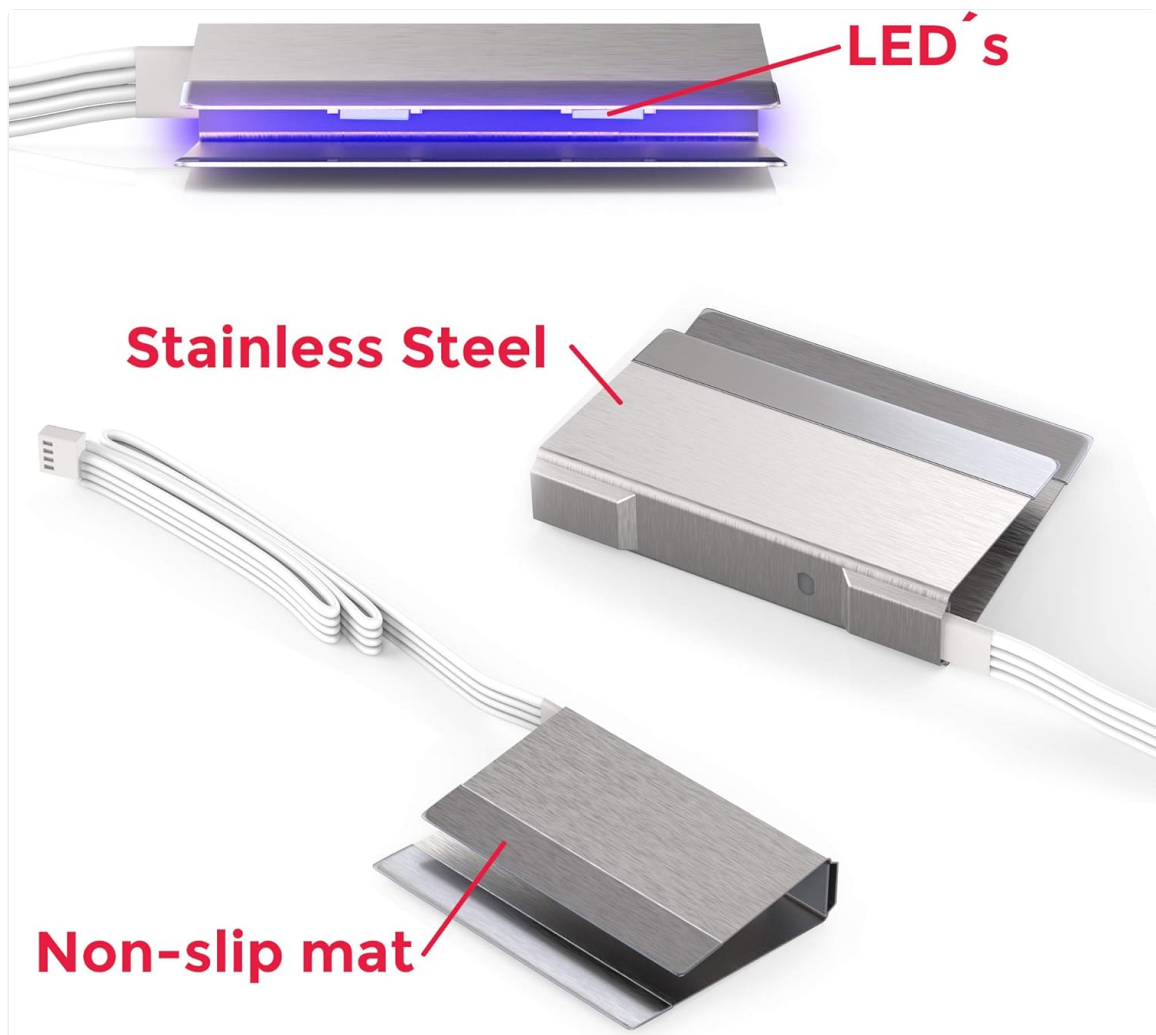


Figure 4.1: Detail of an LED clip, highlighting the stainless steel construction and the non-slip silicone mat for secure attachment to glass shelves.

2. **Attach the Clips:** Gently slide each LED clip onto the edge of your glass shelf. The clips feature a non-slip silicone coating for secure adhesion. Position the clips evenly along the shelf for optimal light distribution.

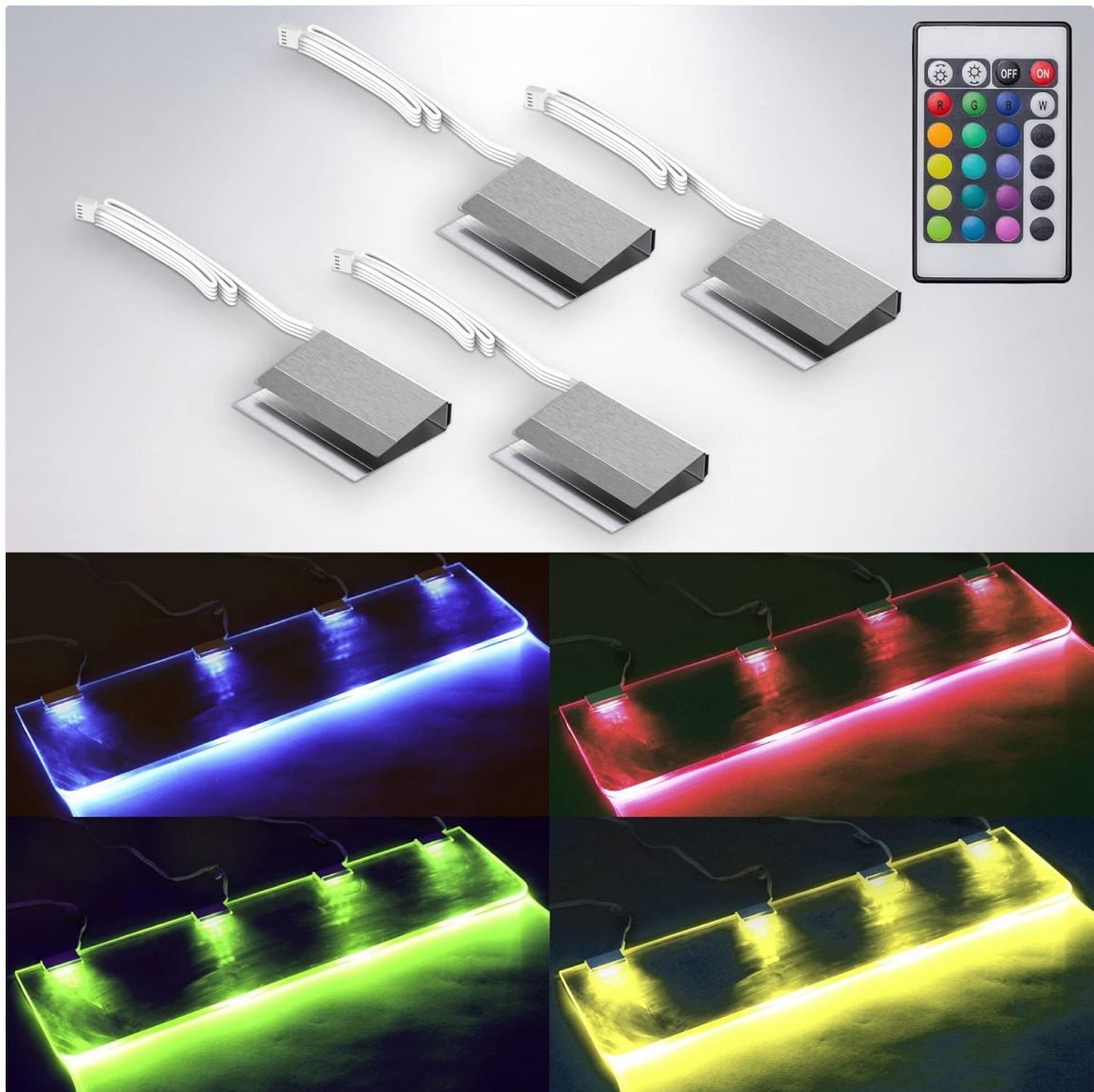


Figure 4.2: Four LED clips securely attached to a glass shelf, demonstrating how they illuminate the glass edge with different colors.

3. **Connect the Cables:** Connect the cables from each LED clip to the main connector cable. Ensure all connections are firm.
4. **Connect Power:** Plug the power adapter into a standard 230V electrical outlet (Type C - two round pins).
5. **Insert Remote Battery:** Open the battery compartment of the remote control and insert one CR2025 lithium metal battery (not included), observing the correct polarity.

5. OPERATING INSTRUCTIONS

The LED lighting kit is operated using the included remote control. Ensure the remote control is pointed towards the receiver connected to the lighting system.

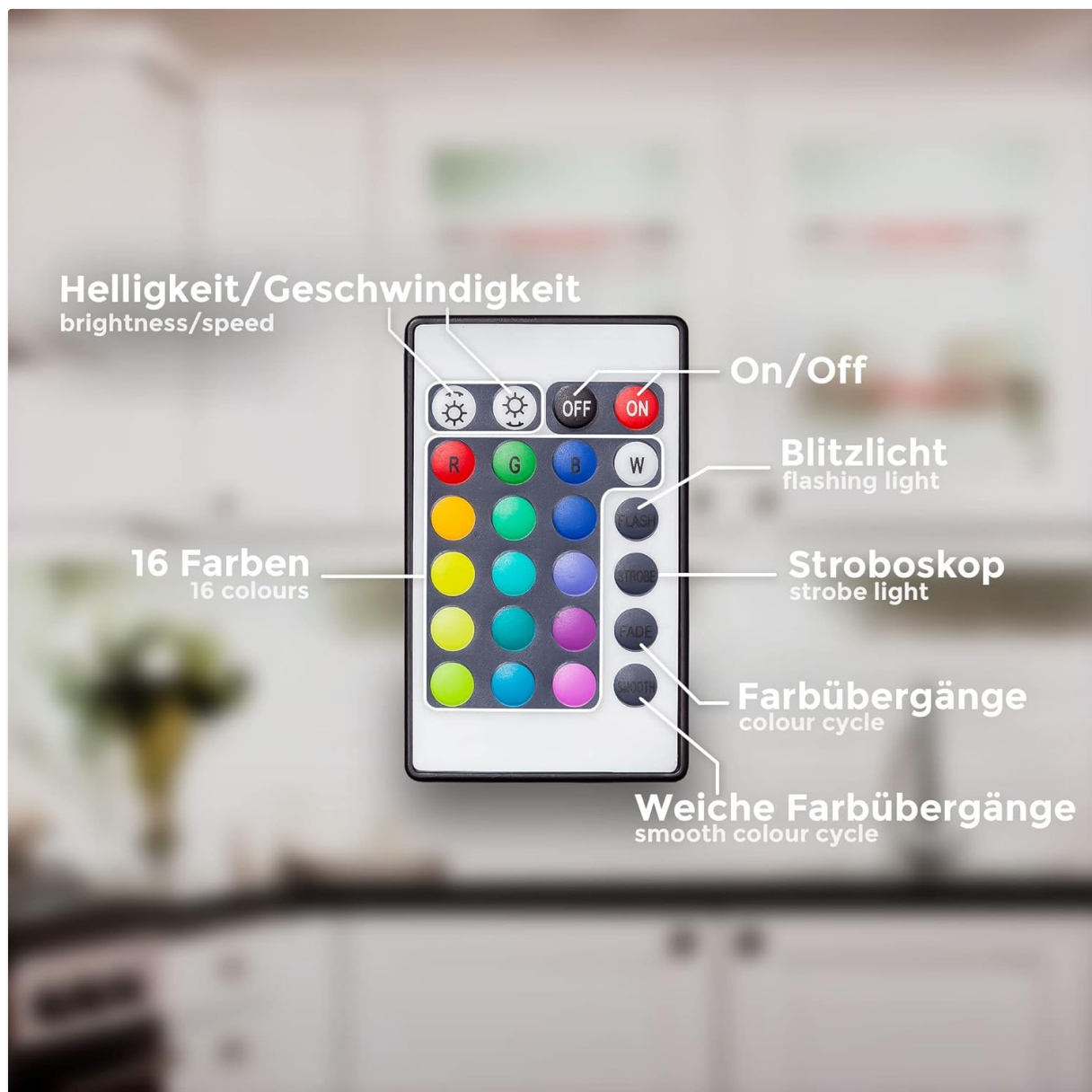


Figure 5.1: Remote control layout, detailing buttons for power, brightness/speed adjustment, 16 static colors, and 4 dynamic lighting modes.

Remote Control Functions:

- **ON/OFF:** Press to turn the lights on or off.
- **Brightness/Speed** (☀️): Adjust the brightness of static colors or the speed of dynamic modes.
- **Color Selection:** Choose from 16 static colors by pressing the corresponding color button.
- **Dynamic Modes:**
 - **FLASH:** Flashing light mode.
 - **STROBE:** Strobe light mode.
 - **FADE:** Smooth color cycle mode.
 - **SMOOTH:** Another smooth color cycle mode.

The system remembers the last selected mode and brightness setting when turned off and on again, even if power is disconnected.



Figure 5.2: Example of a glass shelf illuminated with various colors, demonstrating the 15 colors plus white and 4 light modes available.

6. MAINTENANCE

To ensure the longevity and optimal performance of your LED lighting kit, follow these maintenance guidelines:

- **Cleaning:** Disconnect the power adapter before cleaning. Use a soft, dry cloth to wipe the LED clips and cables. Do not use abrasive cleaners or solvents.
- **Battery Replacement (Remote Control):** If the remote control's range decreases or it stops responding, replace the CR2025 battery. Ensure correct polarity when inserting the new battery.
- **Storage:** If storing the product for an extended period, disconnect it from power and store it in a cool, dry place.

7. TROUBLESHOOTING

If you encounter issues with your B.K.Licht LED lighting kit, refer to the following table for common problems and solutions:

Problem	Possible Cause	Solution
---------	----------------	----------

Problem	Possible Cause	Solution
Lights do not turn on.	No power supply. Remote control battery is dead or incorrectly inserted. Loose connections.	Check if the power adapter is securely plugged into the outlet and the lighting system. Replace the CR2025 battery in the remote control, ensuring correct polarity. Verify all cable connections are firm.
Remote control is unresponsive.	Remote control battery is dead. Obstruction between remote and receiver. Remote is too far from the receiver.	Replace the CR2025 battery. Ensure a clear line of sight between the remote and the receiver. Move closer to the receiver.
Lights flicker or change colors unexpectedly.	Loose connections. Electrical interference.	Check all cable connections. Try plugging the unit into a different outlet or away from other electronic devices.

If the problem persists after attempting these solutions, please contact B.K.Licht customer support.

8. SPECIFICATIONS

Model Number	BKL1111
Brand	B.K.Licht
Dimensions (L x W x H)	25 x 10 x 40 cm (Product packaging dimensions)
Weight	280 g
Material	Clips: Resin/Metal; Shade: Glass
Color	Chrome (Clips)
Input Voltage	230 Volts
Power Consumption	5 Watts
Light Source Type	LED (Diode électroluminescente)
Number of LEDs/Bulbs	4 (integrated into clips)
Luminous Flux	Adjustable
Color Temperature	3000 Kelvin (White light component)
Special Features	Color changing (RGB), Dimmable, Remote Control
IP Rating	IP20 (Not protected against water)
Remote Control Battery	1 x CR2025 Lithium Metal (Not included)
Compatibility	Glass shelves 5-8mm thick
Country of Origin	China

9. WARRANTY AND SUPPORT

B.K.Licht products are manufactured with quality and durability in mind. For information regarding warranty coverage, please refer to the terms and conditions provided at the point of purchase or visit the official B.K.Licht website.

If you require technical assistance, have questions about installation, or need to report a defect, please contact B.K.Licht customer support. Have your model number (BKL1111) and purchase details ready when contacting support.

Contact information can typically be found on the product packaging or the official B.K.Licht website.