

COSMO COS-5MU36

COSMO COS-5MU36 36-inch Delta Collection Under Cabinet Range Hood Instruction Manual

This manual provides detailed instructions for the installation, operation, maintenance, and troubleshooting of your COSMO COS-5MU36 36-inch Delta Collection Under Cabinet Range Hood. Please read thoroughly before use.

1. PRODUCT OVERVIEW

The COSMO COS-5MU36 is a 36-inch under cabinet range hood from the Delta Collection, designed for efficient ventilation in your kitchen. It features a brushed stainless steel finish, push-button controls, and LED lighting.



Image 1.1: Front view of the COSMO COS-5MU36 range hood.

Key features include:

- **Slim Space-Saving Design:** Ideal for under cabinet installation in various kitchen sizes.
- **Efficient and Quiet Operation:** A 3-speed motor with a low noise level of 50 dB on the lowest setting.
- **User-Friendly Controls:** Push-button panel for fan speed, lights, and power.
- **Superior Multi-Layer Filtration:** Durable, reusable aluminum mesh filters for trapping grease and oil.
- **Versatile Ventilation:** Convertible between ducted and ductless operation (Carbon Filter Kit CFK4 sold separately for ductless conversion).
- **Integrated LED Lighting:** Provides clear illumination for your cooking area.

2. SAFETY INFORMATION

To reduce the risk of fire, electric shock, or injury, observe the following:

- Install this range hood in accordance with all national and local codes and ordinances.
- Always disconnect power at the service panel before servicing or cleaning the unit.

- Ensure proper ventilation. This unit is designed for general ventilating use only. Do not use to exhaust hazardous or explosive materials and vapors.
- Clean grease filters frequently. Grease should not be allowed to accumulate on the fan or filters.
- Never leave surface units unattended at high settings. Boil-overs cause smoking and greasy spill-overs that may ignite.
- Use proper pan size. Always use cookware appropriate for the size of the surface element.
- If a fire occurs, turn off the range hood and then extinguish flames using a dry chemical extinguisher or a CO2 extinguisher. Never use water on a grease fire.

3. SETUP AND INSTALLATION

The COSMO COS-5MU36 range hood can be installed as either a ducted or ductless system. For ductless conversion, a Carbon Filter Kit (Part # CFK4) is required and sold separately.

3.1 Included Components

Your package includes:

- Multi-layer Mesh Filters
- Backdraft Damper
- LED Light Bulbs (pre-installed)
- Mounting Kit
- Instruction Manual



Image 3.1: Included components for the range hood.

3.2 Dimensions and Venting Options

Ensure adequate space for installation. The range hood dimensions are 35.25" (W) x 19.75" (L) x 5.5" (H). It supports top or back venting. A 5" round duct is recommended for ducted installations.



Image 3.2: Detailed dimensions and top/rear vent options.

3.3 Ductless Conversion Steps

To convert your range hood to ductless operation (recirculating air), you will need the Carbon Filter Kit Part # CFK4 (sold separately). Follow these steps:

1. Open the unit by removing the mesh filters and locate the switch in the middle of the fan unit. Remove the bolt with a Phillips tool.
2. Change the switch to the ductless position, which allows the exhaust to flow out of the front vent. Replace the bolt with a Phillips tool.
3. Place the charcoal filter on top of the middle piece and tighten it into place. Replace mesh filters.



Switching the Range Hood to Ductless



1. Open the unit by removing the mesh filters and locate the switch in the middle of the fan unit. Remove the bolt with a Phillips tool.



2. Change the switch to the ductless position which allows the exhaust to flow out of the front vent. Replace bolt with Phillips tool.



3. You will need **Part # CFK4** Carbon Filter Kit (sold separately). Place the charcoal filter on top of the middle piece and tighten it into place. Replace mesh filters and your range hood is now ductless.

Image 3.3: Visual guide for ductless conversion.

3.4 Installation Video Guide

For a visual guide on the installation process, please refer to the official quick start video:

Video 3.4: Official Quick Start Guide for COSMO Under Cabinet Range Hood 5MU Series. This video provides an overview of the installation process.

4. OPERATING INSTRUCTIONS

The range hood is equipped with push-button controls for easy operation of its functions.

4.1 Control Panel

The control panel features buttons for power, fan speed selection, and lighting.

2M+
HOMES IMPROVED

Cosmo Appliances, the new name in modern luxury kitchen appliances is fast becoming a leading brand in manufacturing premium products known for seamlessly integrating performance, technology and design to advance the kitchen beyond mere form and function. Cosmo makes state-of-the-art-living possible with our cost-effective portfolio of aesthetically pleasing and high-performing stainless steel appliances.

COSMO



AFFORDABLE LUXURY

Enjoy modern and contemporary appliances incorporating the latest designs at a revolutionary price.



PREMIUM MANUFACTURING

Created with up-to-date technology and the best components available, bringing you state-of-the-art living.



CULTIVATE YOUR PASSION

Focus more on what you love with appliances that achieve modern culinary techniques and applications.

FEATURED ON:

Forbes

This Old House

USA TODAY

bob vila

CR Consumer Reports

REDFIN

Image 4.1: Push-button controls for fan speeds and lights.

- **Power Button:** Turns the unit on or off.
- **Fan Speed Buttons:** Select from three fan speeds (Low, Medium, High) to adjust airflow based on cooking needs. The fan operates quietly, with a noise level as low as 50 dB on the lowest speed.
- **Light Button:** Controls the built-in LED lights to illuminate your cooking surface.

5. MAINTENANCE

Regular maintenance ensures optimal performance and longevity of your range hood.

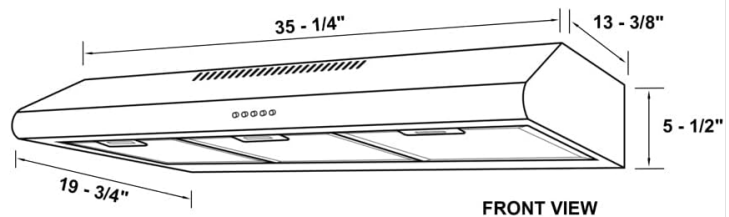
5.1 Cleaning Mesh Filters

The multi-layer aluminum mesh filters are designed to trap grease and oil effectively. They are reusable and can be cleaned by hand or in a dishwasher.

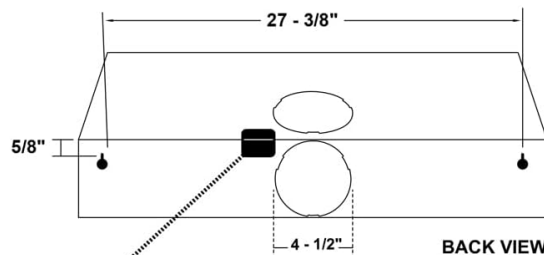


COS-5MU36

36 IN. UNDER CABINET RANGE HOOD



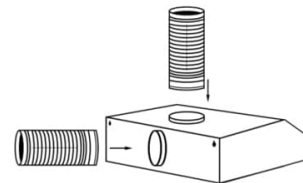
FRONT VIEW



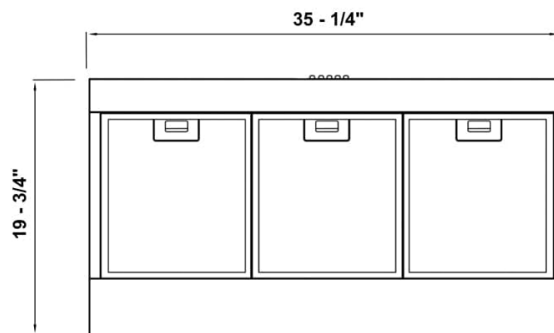
BACK VIEW

Location of
3-Prong Plug

NOTE: Ventilation outlet is 4 - 1/2" in diameter. A 5" duct is recommended for installation.



TOP or REAR Vent Options



VIEW FROM UNDER

Dimensions (WxDxH): 35.25" x 19.75" x 5.5"

Image 5.1: Aluminum mesh filters.

To clean:

1. Unclip and remove the mesh filters from the underside of the hood.
2. Wash the filters in warm, soapy water or place them in a dishwasher.
3. Allow filters to dry completely before re-installing.

5.2 Replacing Carbon Filters (Ductless Mode)

If operating in ductless mode, the carbon filters (Part # CFK4) should be replaced periodically, typically every 3-6 months depending on usage, to maintain effective odor removal.

6. TROUBLESHOOTING

Refer to this section for solutions to common issues.

Problem	Possible Cause	Solution
Fan does not operate	No power supply; Motor failure; Control panel issue	Check power connection and circuit breaker. Contact customer support if motor or control panel is faulty.

Problem	Possible Cause	Solution
Lights do not work	Light bulb failure; Wiring issue	Replace LED light bulbs. Check wiring connections.
Insufficient suction	Clogged filters; Improper ducting; Obstruction in airflow	Clean or replace filters. Check ductwork for proper installation and obstructions. Ensure backdraft damper is opening correctly.
Excessive noise	Loose parts; Motor imbalance; Improper installation	Check for loose screws or components. Ensure proper installation and secure mounting. Contact customer support if motor is noisy.

7. SPECIFICATIONS

Feature	Detail
Brand	COSMO
Model Info	COS-5MU36
Product Dimensions	19.75"D x 35.25"W x 5.5"H
Item Weight	15 Pounds
Material	Stainless Steel
Air Flow Capacity	200 Cubic Feet Per Minute
Noise Level	50 Decibels (lowest speed)
Number of Speeds	3
Controls Type	Push Button Controls
Light Source Type	LED
Voltage	120 Volts
Wattage	146 watts
Filter Type	Mesh (Reusable)
Ventilation Type	Ducted/Ductless Convertible
Duct Size	5" Round
Installation Type	Under Cabinet Mount
UPC	854115007382

8. WARRANTY AND SUPPORT

Your COSMO COS-5MU36 range hood comes with a **2-Year Limited Parts Warranty**. For warranty claims,

technical assistance, or general inquiries, please contact our USA-based customer support team.

Please refer to the contact information provided in your product packaging or visit the official COSMO website for the most up-to-date support details.