

SCS Sentinel OneGate3

SCS Sentinel OneGate 3 Sliding Gate Motorization System

Model: OneGate3 (MCO0062)

[Installation](#) [Operation](#) [Introduction](#) [Safety](#) [Package Contents](#) [Setup &](#)
[Maintenance](#) [Troubleshooting](#) [Specifications](#) [Warranty & Support](#)

1. INTRODUCTION

This manual provides detailed instructions for the installation, operation, and maintenance of your SCS Sentinel OneGate 3 sliding gate motorization system. This 12V system is designed for sliding gates up to 4 meters in length and 400 kg in weight, offering reliable and quiet operation.

Please read this manual thoroughly before beginning installation or operation to ensure proper functioning and safety.

2. SAFETY INFORMATION

Important Safety Instructions:

- Ensure all electrical connections are performed by a qualified professional and comply with local regulations.
- Disconnect power before performing any maintenance or repair work.
- Keep children and pets away from the gate area during operation.
- Do not attempt to operate the gate if any part of the system is damaged or malfunctioning.
- Regularly inspect the gate and motorization system for signs of wear or damage.
- The system is designed for sliding gates only. Do not adapt it for other uses.
- Ensure the gate moves freely and without obstruction before installing the motorization.

3. PACKAGE CONTENTS

Verify that all components listed below are present in your package:

- 1x Motor with electronic control board
- 2x Remote controls
- 1x 12V LED flashing light

- 4 meters of rack (cremaillere)
- 1x Installation template
- Screws and unlocking key
- Motor mounting bracket
- Metal limit switches
- 1x Instruction manual (this document)



Image 3.1: Complete SCS Sentinel OneGate 3 motorization kit, including the motor, rack sections, two remote controls, and a flashing light.



Motorisation à crémaillères
pour portail coulissant

OneGate 3



12V



Feu clignotant à LED



Télécommandes



Crémaillères

4 m max
400 kg max



Image 3.2: Overview of the SCS Sentinel OneGate 3 kit highlighting included accessories: LED flashing light, remote controls, and rack sections.

4. SETUP AND INSTALLATION

The installation of the OneGate 3 motorization system involves three main steps:

1. **Mechanical Installation:** Securely mount the motor and attach the rack to your sliding gate. Ensure the gate moves smoothly and is properly aligned.
2. **Electrical Connection:** Connect the motor to a 12V power supply. This step should be performed by a qualified electrician to ensure safety and compliance.
3. **Programming and Synchronization:** Program the remote controls and configure the motor's settings, such as travel limits and operating modes.

Installation rapide en 3 ÉTAPES

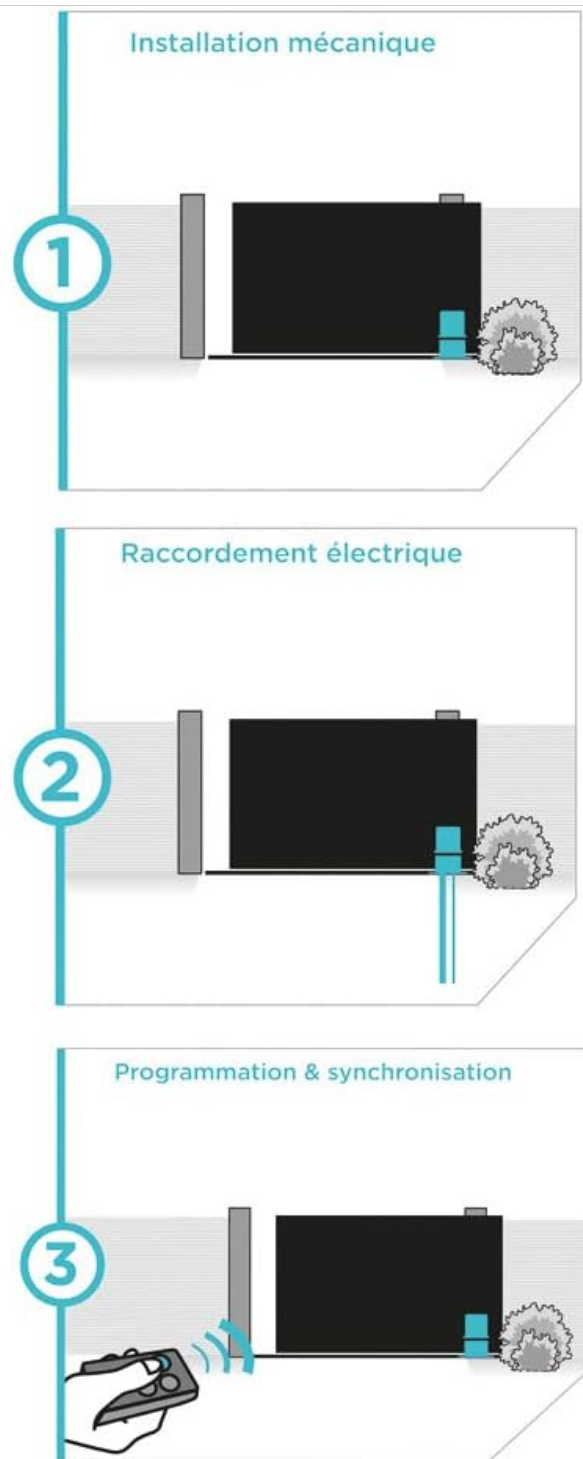


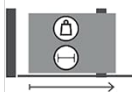
Image 4.1: Visual representation of the three installation steps: mechanical installation, electrical connection, and programming/synchronization.

4.1 Mechanical Installation Details

Use the provided installation template to correctly position the motor. Ensure the motor is level and securely fastened to a stable base. Attach the rack sections to the bottom edge of the gate, ensuring proper meshing with the motor's gear. The rack should be installed such that there is a small clearance between the rack and the motor gear to allow for smooth movement and thermal expansion.

prim' by SCS Sentinel
Motorisation à crémaillères
OneGate 3

MCO0062
 Unité de vente : 1
 3 701085 200145



4 m max
 400 kg max

12V

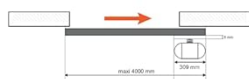


Motorisation
 silencieuse

Ouverture vers la droite ou la gauche
 Ouverture totale ou partielle (ouverture piéton)
 Ralentissement fin de course
 Arrêt sur obstacle
 Déverrouillage manuel
 Apprentissage de la course
 4 m de crémaillères

Cotes de pose

Ouverture vers la droite

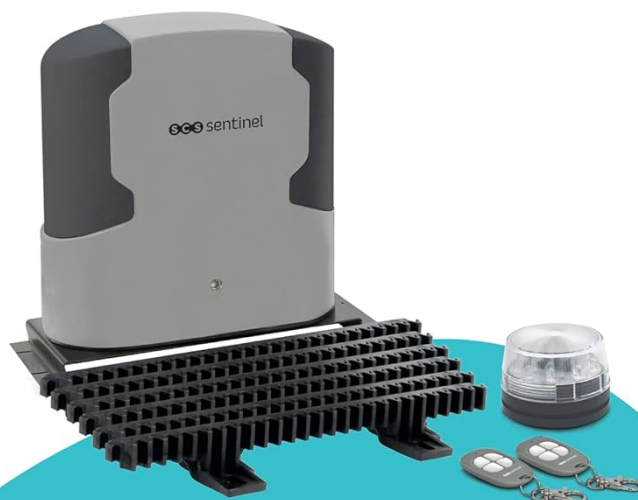


Positionnement du moteur en fonction du
 sens d'ouverture du portail

Ouverture vers la gauche possible



Garantie 3 ans



scs sentinel

Route de St Symphorien - BP69
 85130 LES LANDES-GENUSSON - FRANCE
 Service commercial : Tél : +33 (0)2 51 61 61 39 / Fax : +33 (0)2 51 61 61 40

Image 4.2: Diagram illustrating the mechanical installation, including positioning the motor and rack for both right and left opening configurations.

4.2 Electrical Connection

Connect the 12V power supply to the motor's control board as indicated in the wiring diagram (refer to the detailed manual for specific wiring instructions). Ensure all connections are tight and insulated. The flashing light should also be connected according to the diagram.



Image 4.3: The SCS Sentinel OneGate 3 motor with its cover removed, showing the internal electronic control board where electrical connections are made.

4.3 Programming and Synchronization

After electrical connection, program the motor's travel limits and remote controls. The system supports various functions such as full or partial opening, slow-down at end of travel, obstacle detection, and automatic closing (if photocells are installed). Refer to the detailed programming section in the included paper manual for step-by-step instructions on setting these parameters.



Image 4.4: One of the two remote controls included with the SCS Sentinel OneGate 3 system, used for programming and operating the gate.

5. OPERATING INSTRUCTIONS

Once installed and programmed, the SCS Sentinel OneGate 3 system offers several operational features:

- **Remote Control Operation:** Use the provided remote controls to open or close the gate. Each button can be programmed for different functions.
- **Direction of Opening:** Configurable for opening to the right or left.
- **Total or Partial Opening:** Allows for full gate opening or a partial opening (pedestrian mode).
- **Slow-down at End of Travel:** The gate will slow down before reaching its fully open or closed position for smoother operation.
- **Obstacle Detection:** The motor will stop if an obstacle is detected during operation, enhancing safety.
- **Automatic Closing:** If photocells are installed, the gate can be configured to close automatically after a set time.
- **Manual Unlocking:** In case of power failure, the gate can be manually unlocked using the provided key.
- **Travel Learning:** The system learns the gate's travel distance during initial setup.

OneGate 3

MOTORISATION POUR PORTAIL COULISSANT

Ouverture vers la droite ou vers la gauche

Ouverture totale ou partielle (ouverture piéton)

Ralentissement fin de course

Arrêt sur l'obstacle

Fermeture automatique (si photocellules)

Déverrouillage manuel

Apprentissage de la course

Image 5.1: A visual summary of the OneGate 3 system's operational features, including opening direction, partial opening, slow-down, obstacle stop, automatic closing, manual unlock, and travel learning.

5.1 Flashing Light

The included 12V LED flashing light activates during gate movement to provide a visual warning to pedestrians and vehicles in the vicinity.



Image 5.2: The 12V LED flashing light, an accessory included with the OneGate 3 system, designed to signal gate movement.

6. MAINTENANCE

Regular maintenance ensures the longevity and reliable operation of your gate motorization system.

- **Monthly:** Inspect the gate's movement for any obstructions or unusual noises. Clean the rack and motor gear to remove dirt and debris.
- **Quarterly:** Check all mounting bolts and screws for tightness. Verify the functionality of the limit switches and obstacle detection system.
- **Annually:** Have a qualified technician inspect the electrical connections and overall system performance.
- Keep the area around the motor clear of vegetation and debris.

Always disconnect power to the unit before performing any maintenance.

7. TROUBLESHOOTING

This section addresses common issues you might encounter. For more complex problems, contact technical support.

Problem	Possible Cause	Solution
Gate does not respond to remote control.	No power to the motor; remote control battery low; remote not programmed.	Check power supply; replace remote battery; re-program remote control.

Problem	Possible Cause	Solution
Gate stops unexpectedly.	Obstacle detected; limit switch issue; motor overheating.	Remove obstruction; check limit switch alignment; allow motor to cool.
Gate opens/closes partially.	Travel limits incorrectly set; mechanical obstruction.	Re-program travel limits; check for and remove any obstructions.
Flashing light not working.	Faulty bulb/LED; loose connection; power issue.	Check connections; replace light if necessary; verify power to light.

8. TECHNICAL SPECIFICATIONS

Brand: SCS Sentinel

Model: OneGate3 (MCO0062)

Voltage: 12 Volts

Maximum Gate Length: 4 meters

Maximum Gate Weight: 400 kg

Mechanism Type: Rack and Pinion

Remote Control Frequency: 433.92 MHz

Material: Metal

Product Dimensions (L x W x H): 15.7 x 30.9 x 30.8 cm

Item Weight: 13.05 Kilograms

Included Components: Motor with electronic board, 2 remote controls, 12V LED flashing light, 4m rack, installation template, screws, unlocking key, motor mounting bracket, metal limit switches, instruction manual.

International Article Code (EAN/UPC): 03701085200145

9. WARRANTY AND SUPPORT

SCS Sentinel guarantees the reliability of its technical products. This product comes with a 3-year warranty. For technical assistance, installation guidance, or any questions regarding your product, please contact SCS Sentinel customer support. Our technicians are available to provide personalized advice and support.

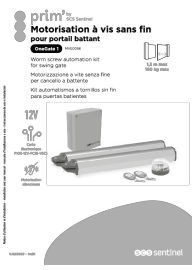





Contact Information:

Brand: SCS Sentinel

Address: Route de St Symphorien - BP69, 85130 LES LANDES-GENUSSON - FRANCE

Commercial Service Tel: +33 (0)2 51 61 61 39

Fax: +33 (0)2 51 61 61 40

	<p>SCS Sentinel OneGate 1 Swing Gate Motorization Kit Installation and User Manual</p> <p>Comprehensive guide for installing and operating the SCS Sentinel OneGate 1 worm screw automation kit for swing gates. Covers safety, components, wiring, installation, settings, maintenance, and troubleshooting.</p>
	<p>SCS Sentinel OneGate 2 MBA0054 Articulated Arm Swing Gate Opener Installation Manual</p> <p>Comprehensive installation and user manual for the SCS Sentinel OneGate 2 MBA0054 articulated arm automation kit for swing gates. Includes technical specifications, wiring diagrams, setup instructions, and troubleshooting.</p>
	<p>SCS Sentinel SimplyOpen 1: Worm Screw Automation Kit for Swing Gates</p> <p>Comprehensive installation, usage, and maintenance manual for the SCS Sentinel SimplyOpen 1 worm screw automation kit for swing gates. Includes safety instructions, technical specifications, troubleshooting, and warranty information.</p>
	<p>SCS Sentinel OpenGate 3 MCO0108 Sliding Gate Automation Kit - Installation and User Manual</p> <p>Comprehensive guide for the SCS Sentinel OpenGate 3 MCO0108 automation kit for sliding gates, covering installation, usage, maintenance, and technical specifications. This manual provides detailed instructions for setting up and operating the gate automation system.</p>
	<p>SCS Sentinel OpenGate 1 MVE0100 Swing Gate Automation Kit - Installation and User Manual</p> <p>Comprehensive guide for the SCS Sentinel OpenGate 1 MVE0100 swing gate automation kit, covering installation, wiring, settings, maintenance, and troubleshooting. Features 24V DC motors for residential use.</p>
	<p>SCS Sentinel OpenGate 1 MVE0100 Swing Gate Automation Kit Manual</p> <p>Comprehensive manual for the SCS Sentinel OpenGate 1 MVE0100 swing gate automation kit, covering installation, operation, maintenance, and troubleshooting. Includes technical specifications and safety guidelines.</p>