

ZEXMTE 0054

ZEXMTE 5.4 USB Bluetooth Adapter User Manual

Model: 0054

[Introduction](#)

[Setup](#)

[Operating
Instructions](#)

[Maintenance
Support](#)

[Troubleshooting](#)

[Specifications](#)

1. INTRODUCTION

The ZEXMTE 5.4 USB Bluetooth Adapter is designed to provide seamless wireless connectivity for your PC or laptop. This compact dongle enables you to connect various Bluetooth-enabled devices such as mice, keyboards, headsets, and speakers, enhancing your computing experience with the latest Bluetooth 5.4 technology. It supports dual modes (BR/EDR + BLE) for efficient and stable performance.



Figure 1: ZEXMTE 5.4 USB Bluetooth Adapter. This image shows the compact black and gold USB dongle, highlighting its small size and design.

2. SETUP

2.1. Plug-and-Play Installation (Windows 11/10/8.1)

For most modern Windows operating systems (Windows 11, Windows 10, Windows 8.1), the ZEXMTE 5.4 USB Bluetooth Adapter offers a true plug-and-play experience. No driver installation or additional software is required.

1. Locate an available USB port on your PC or laptop.
2. Insert the ZEXMTE 5.4 USB Bluetooth Adapter firmly into the USB port.
3. Your operating system will automatically detect and install the necessary drivers. This process may take a few moments.
4. Once installed, the adapter's indicator light will illuminate, and Bluetooth functionality will be available in your system settings.

Plug-and-Play & Drive-Free



Windows
11/10/8.1/7



Figure 2: Plug-and-Play & Drive-Free. This image illustrates the simplicity of plugging the adapter into a laptop, with Windows logos indicating compatibility.

2.2. Driver Installation (Windows 7)

For Windows 7 users, manual driver installation is required. Please follow these steps:

1. Insert the ZEXMTE 5.4 USB Bluetooth Adapter into an available USB port.
2. Visit the official ZEXMTE website to download the appropriate drivers for Windows 7. Alternatively, contact ZEXMTE

customer support via Amazon message for assistance.

3. Follow the on-screen instructions provided by the driver installer to complete the installation.
4. Restart your computer if prompted.

3. OPERATING INSTRUCTIONS

3.1. Bluetooth Technology and Modes

The ZEXMTE 5.4 USB Bluetooth Adapter is equipped with the latest Bluetooth 5.4 chipset, supporting dual modes:

BR/EDR (Basic Rate/Enhanced Data Rate) and **BLE (Bluetooth Low Energy)**. This ensures broad compatibility and optimized performance for various devices.

- **BR/EDR:** Provides higher data transfer speeds for devices like audio streaming (headsets, speakers) and file transfers.
- **BLE:** Offers low power consumption, ideal for devices like mice, keyboards, and other peripherals where battery life is critical.

EDR/BR+BLE Dual Mode



Low Energy
Consumption



Faster &
More Stable



NO Lag



Figure 3: EDR/BR+BLE Dual Mode. This image visually represents the dual-mode capability of the adapter, highlighting low energy consumption, faster and more stable connections, and no lag.

3.2. Pairing Bluetooth Devices

Once the adapter is installed, you can pair your Bluetooth devices through your computer's operating system settings:

1. Ensure your Bluetooth device (e.g., headphones, mouse, keyboard) is in pairing mode. Refer to your device's manual for specific instructions.

2. On your Windows PC, navigate to **Settings > Devices > Bluetooth & other devices**.
3. Turn on Bluetooth if it is not already enabled.
4. Click **"Add Bluetooth or other device"** and select **"Bluetooth"**.
5. Select your device from the list of discovered devices and follow any on-screen prompts to complete the pairing process.

The adapter supports connecting up to 7 different types of devices simultaneously.



Figure 4: Wider Compatibility. This image displays the range of compatible devices, including keyboards, mice, headsets, desktop PCs, speakers, smartphones, printers, laptops, and tablets.

3.3. Transmission Range and Performance

The ZEXMTE 5.4 USB Bluetooth Adapter offers an enhanced transmission distance of up to 30 meters (98 feet) in open areas. This allows for flexible placement of your connected devices within your workspace or home.

- **Enhanced Data Rate (EDR):** Boosts transmission speed for lag-free wireless data transfer, ideal for music streaming and file transfers.
- **Anti-interference:** Designed to minimize interference in the 2.4 GHz band, ensuring stable connections.

Long Distance Transmission

Distance can reach 10-30m



Figure 5: Long Distance Transmission. This image illustrates the adapter's range within a house, showing a transmission distance of 10-30 meters.

HiFi Audio Experience

enjoy beautiful music

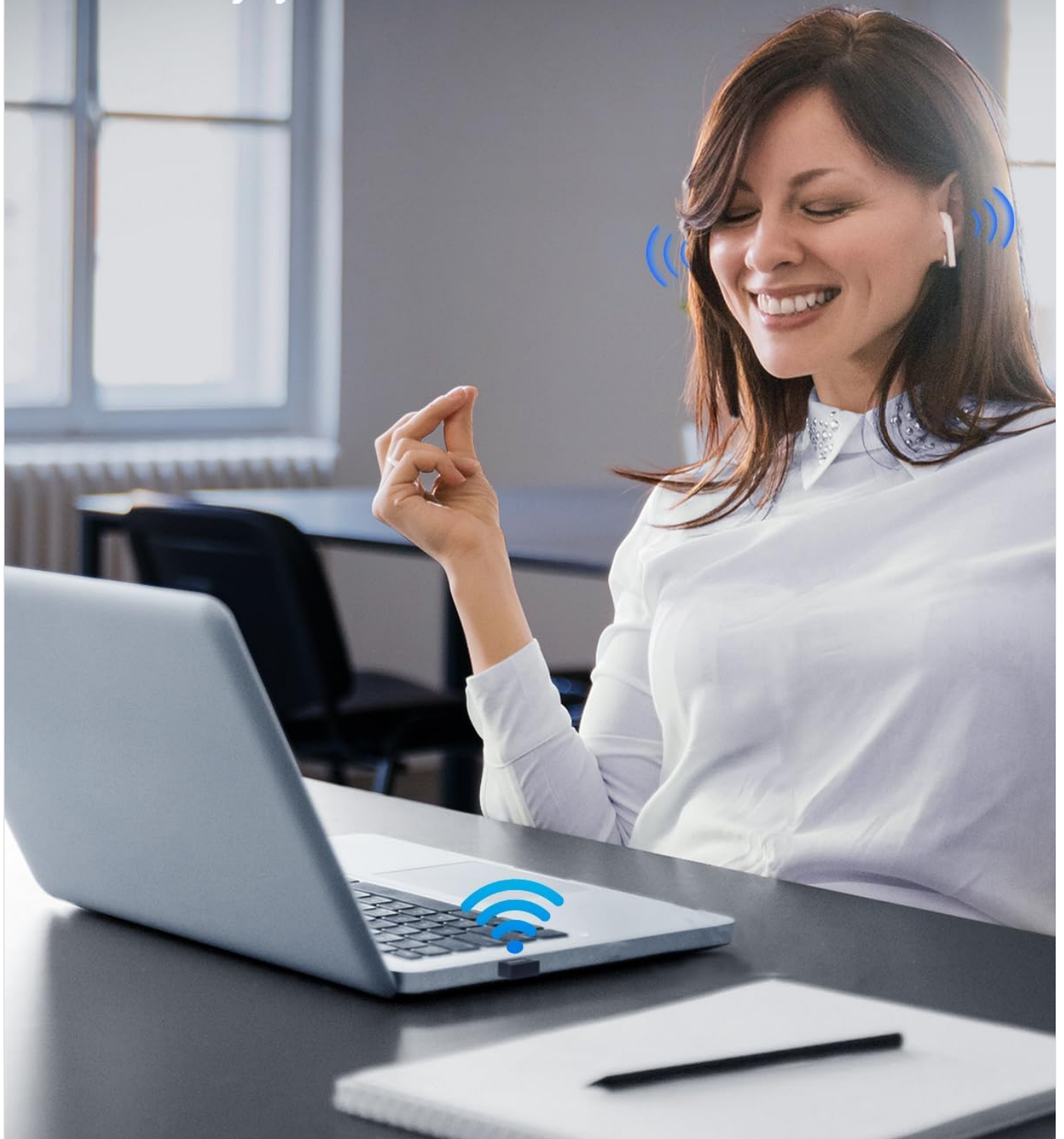


Figure 6: HiFi Audio Experience. This image shows a person enjoying music with wireless headphones connected via the adapter, emphasizing high-fidelity audio.

Wireless Transmission

Enjoy the efficiency and convenience of wireless transmission.

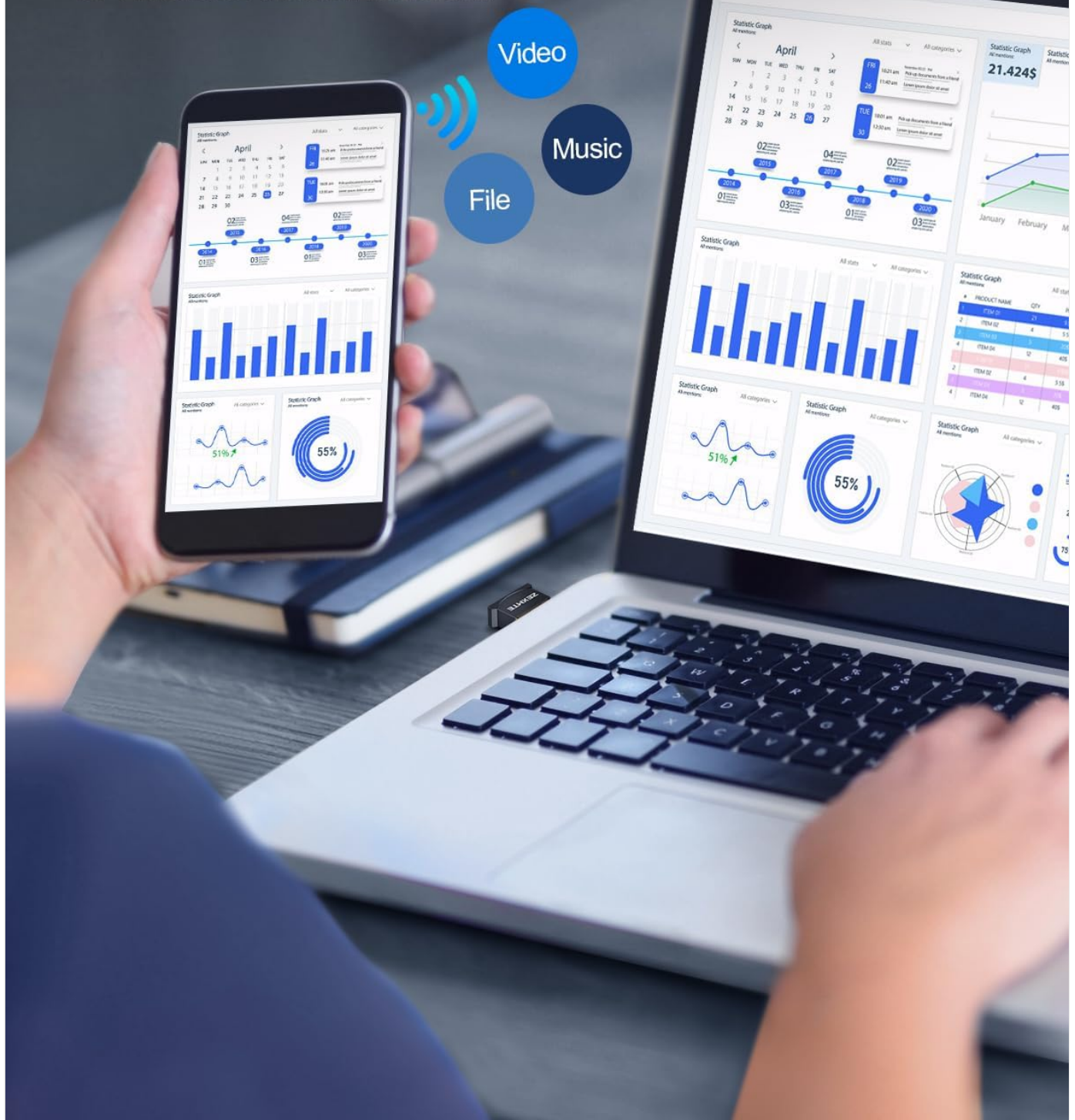


Figure 7: Wireless Transmission. This image depicts a smartphone and laptop connected wirelessly, indicating the ability to transfer files, video, and music.

Fully Enjoy Work & Life



Figure 8: Fully Enjoy Work & Life. This collage shows various scenarios where the adapter enhances daily activities, such as listening to music, working on a laptop, and using a smart speaker.

3.4. Indicator Light

The adapter features a small indicator light that clearly shows its pairing status. A blinking light typically indicates pairing mode or searching for devices, while a solid light indicates a successful connection.

4. MAINTENANCE

The ZEXMTE 5.4 USB Bluetooth Adapter requires minimal maintenance to ensure its longevity and optimal performance:

- **Cleaning:** Gently wipe the adapter with a soft, dry cloth to remove dust or debris. Avoid using liquid cleaners or abrasive materials.
- **Storage:** When not in use, store the adapter in a cool, dry place away from direct sunlight and extreme temperatures.
- **Handling:** Avoid dropping the adapter or subjecting it to strong impacts, as this can damage internal components.
- **Port Protection:** When plugged into a laptop or desktop, its mini design ensures it does not block adjacent ports. However, ensure it is not subjected to excessive force that could damage the USB port.

Compact & Portable



Figure 9: Compact & Portable. This image shows the small adapter plugged into a laptop next to a wireless mouse, demonstrating its unobtrusive size.

5. TROUBLESHOOTING

If you encounter issues with your ZEXMTE 5.4 USB Bluetooth Adapter, please refer to the following common solutions:

Problem	Possible Cause	Solution
Adapter not detected / Bluetooth not appearing in settings.	<ul style="list-style-type: none"> Loose connection. Incorrect USB port. Driver issue (especially Windows 7). Conflicting drivers. 	<ul style="list-style-type: none"> Ensure the adapter is fully inserted into the USB port. Try a different USB port. For Windows 7, ensure drivers are correctly installed (refer to Section 2.2). Check Device Manager for any yellow exclamation marks next to Bluetooth devices. Uninstall and reinstall drivers if necessary. Restart your computer.
Cannot pair with a Bluetooth device.	<ul style="list-style-type: none"> Device not in pairing mode. Out of range. Interference. Compatibility issue. 	<ul style="list-style-type: none"> Ensure your Bluetooth device is in pairing mode. Move the device closer to the adapter. Minimize other 2.4 GHz wireless devices nearby. Verify your operating system is supported (Windows 11/10/8.1/7). Not compatible with Mac OS, Linux, TV, or Car Stereo.
Poor audio quality or frequent disconnections.	<ul style="list-style-type: none"> Distance from adapter. Obstructions. Battery level of connected device. Interference. 	<ul style="list-style-type: none"> Reduce the distance between the adapter and the audio device. Ensure there are no major obstructions (walls, large metal objects) between devices. Charge or replace batteries in your Bluetooth audio device. Try to reduce other wireless activity in the area.

6. SPECIFICATIONS

Feature	Detail
Brand	ZEXMTE
Model Number	0054
Bluetooth Version	5.4 (Backward compatible with V5.0, 4.2 LE, 4.0, 2.1)
Connectivity Technology	Bluetooth, USB
Data Link Protocol	Bluetooth, USB
Data Transfer Rate	3 Megabits Per Second (EDR)
Operating System Support	Windows 11 / 10 / 8.1 / 7 (32/64-bit)
Incompatible Operating Systems	Mac OS, Linux, TV, Car Stereo
Maximum Connected Devices	Up to 7 different types simultaneously
Transmission Distance	Up to 30m / 98ft (in open areas)
Product Dimensions	0.59"L x 0.2"W x 0.83"H (1.5 x 0.5 x 2.1 cm)

Feature	Detail
Item Weight	0.353 ounces (10 grams)
Color	Black
Manufacturer	ZEXMTE
Country of Origin	China
First Available Date	November 4, 2017
UPC	785004244130, 633322767254

7. WARRANTY INFORMATION

Specific warranty details for the ZEXMTE 5.4 USB Bluetooth Adapter are typically provided by the manufacturer at the time of purchase or included with the product packaging. Please refer to any documentation that came with your adapter for precise warranty terms and conditions. For warranty claims or inquiries, please contact ZEXMTE customer support.

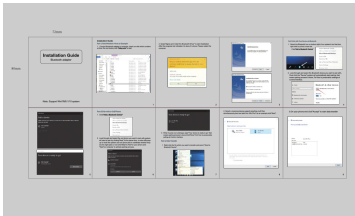
8. CUSTOMER SUPPORT

For further assistance, technical support, or inquiries regarding your ZEXMTE 5.4 USB Bluetooth Adapter, please utilize the following resources:

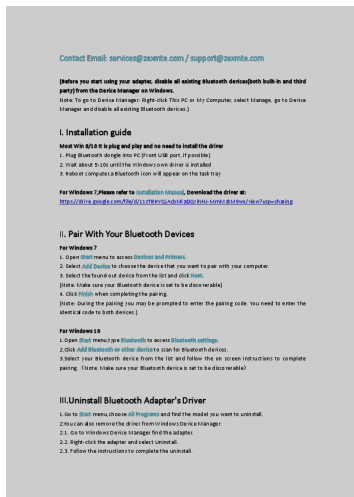
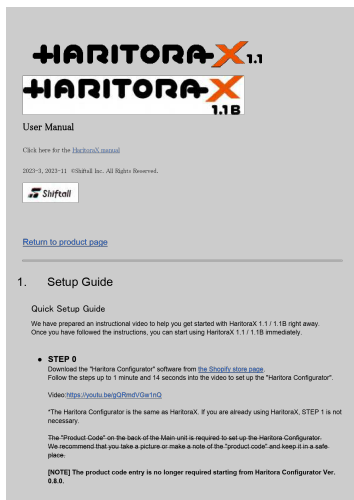
- **Official User Guide (PDF):** A detailed PDF instruction manual is available for download:[Download User Guide](#)
- **Contact ZEXMTE:** You can often reach ZEXMTE customer support through the Amazon messaging system on the product page where you made your purchase.
- **ZEXMTE Store on Amazon:** Visit the official ZEXMTE store for more product information and support options: [ZEXMTE Amazon Store](#)



Documents - ZEXMTE – 0054



[\[pdf\]](#) User Manual Installation Guide Guide
3519 Installation Guide 72x80mm Administrator Bluetooth Adapter for PC ZEXMTE USB 5 0 Dongle Receiver Windows 10 8 7 Desktop Laptop Mouse Keyboard Headsets Speakers 0054 Manual ZEXMTE B1a17kTTwtL m media amazon images I |||
...
lang: score:27 filesize: 3.6 M page_count: 1 document date: 2021-09-03



[\[pdf\]](#) User Manual Quick Start Guide Instructions Guide

User Manual Shiftall Inc SVPMC2S HaritoraX 1 2A4GC 2A4GCSVPMC2S svpmc2s

User Manual 2023-1 Shiftall Inc. All Rights Reserved. Return to product page 1. Setup Guide We have ... uetooth adapter for pc. Brand Model name TP-Link UB400 TP-Link UB4A ASUS USB-BT400 ZEXMTE **0054** Avantree BTDG-40S-BLK Plugable USB-BT4LE USB wall charger Please have on hand a USB wall ...

lang:en score:17 filesize: 4.94 M page count: 64 document date: 2023-01-31

[\[pdf\]](#) User Manual Quick Start Guide Instructions Guide

User Manual Shiftall Inc SVPMC2BS 2A4GC 2A4GCSVPMC2BS svpmc2bs

User Manual Click here for the HaritoraX manual 2023-3, 2023-11 Shiftall Inc. All Rights Reserved. R ... uetooth adapter for pc. Brand Model name TP-Link UB400 TP-Link UB4A ASUS USB-BT400 ZEXMTE **0054** Avantree BTDG-40S-BLK Pluggable USB-BT4LE USB wall charger Please have on hand a USB wall ...

lang:en score:16 filesize: 4.9 M page count: 72 document date: 2023-12-06

[\[pdf\]](#) Installation Guide Frequently Asked Questions Guide

Miraitowa Bluetooth Adapter for PC ZEXMTE USB 5.0 Dongle Receiver Windows 10 8 7 Desktop Laptop

Mouse Keyboard Headsets Speakers 0054 FAQ ZEXMTE 61IKxBGHrL m media amazon images | ||

Contact Email: services.zexmte.com / support.zexmte.com Before you start using your adapter, disable all existing Bluetooth devices both built-in and third party from the Device Manager on Windows. Note: To go to Device Manager: Right-click This PC or My Computer, select Manage, go to Device Manag...

lang:en score:13 filesize: 84.91 K page count: 2 document date: 2022-05-12