

Mount-It! MI-TVHWKIT

Mount-It! Universal VESA TV Mounting Hardware Kit

Model: MI-TVHWKIT

INTRODUCTION

The Mount-It! Universal VESA TV Mounting Hardware Kit provides a comprehensive selection of screws, washers, and spacers designed to ensure compatibility with a wide range of televisions and monitors for wall mounting. This kit is essential for securing your display to a VESA-compatible mount, offering various sizes to match different display specifications. This manual will guide you through the components, specifications, and proper usage to achieve a secure installation.

PACKAGE CONTENTS

Your Mount-It! Universal VESA TV Mounting Hardware Kit includes a variety of fasteners and accessories, meticulously organized for your convenience. Please verify that all components listed below are present in your package.

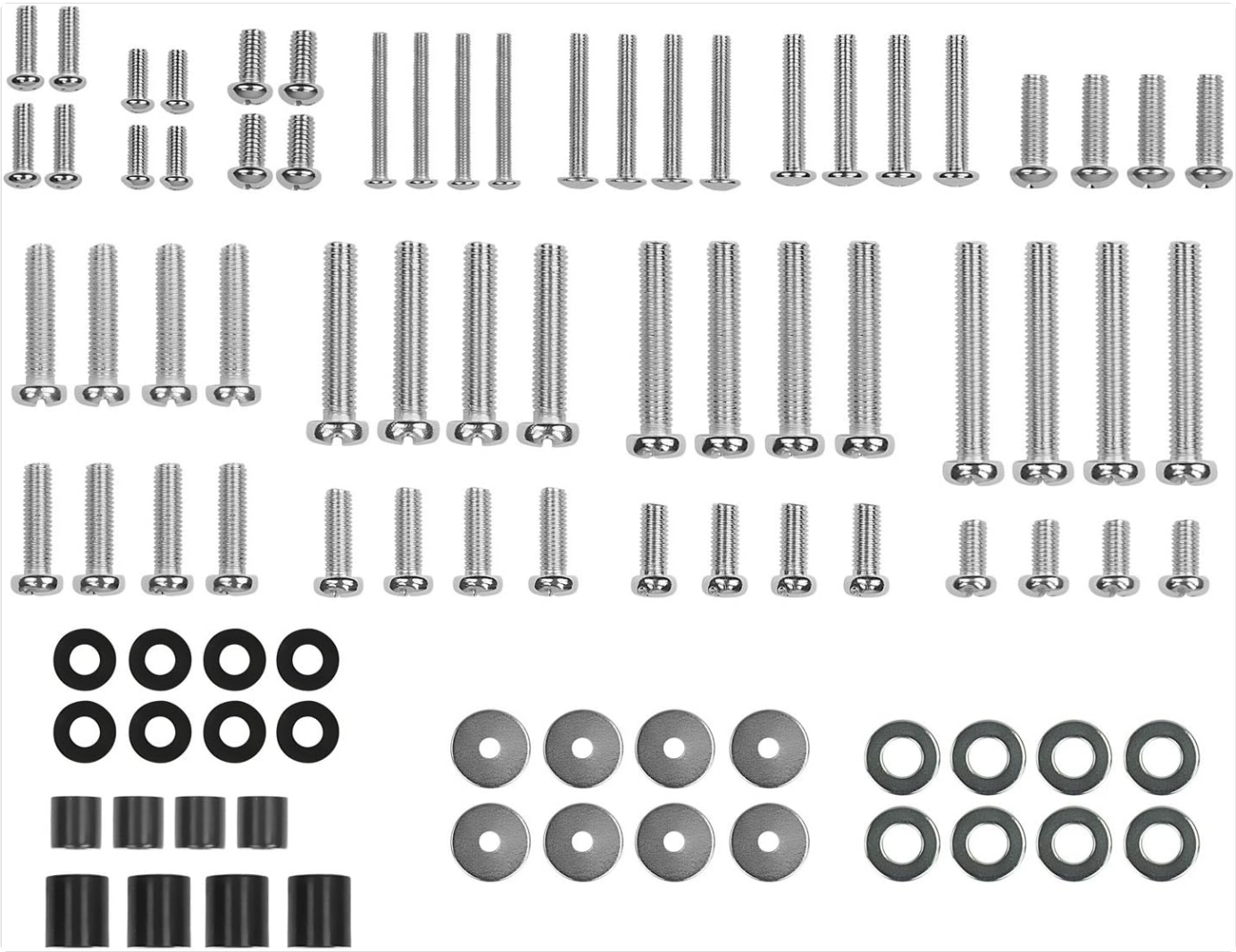


Image: Overview of all components in the Mount-It! Universal VESA TV Mounting Hardware Kit, including various sizes of M4, M5, M6, and M8 screws, along with corresponding washers and cylindrical spacers.

Detailed Component Breakdown

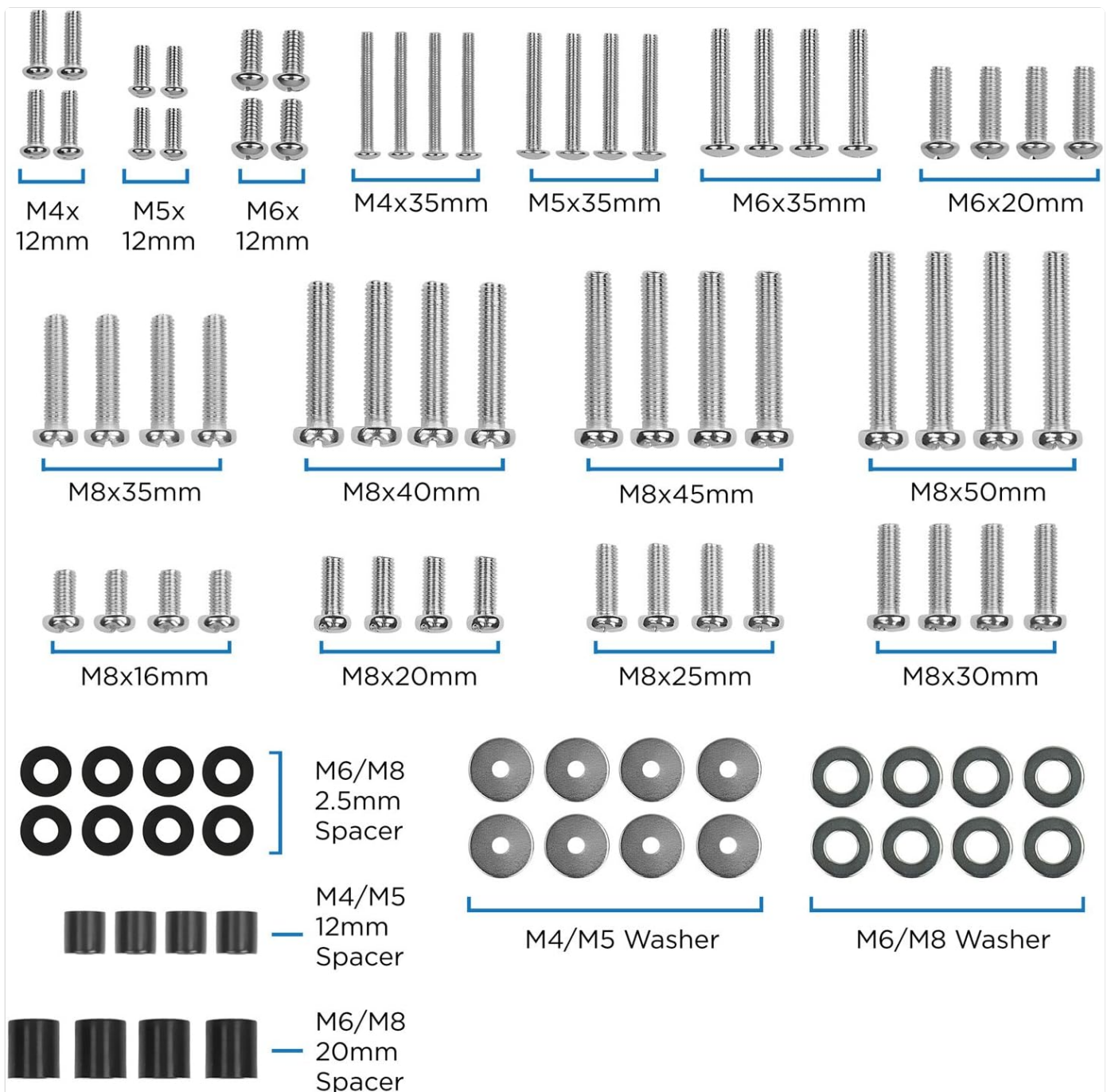


Image: A comprehensive visual guide to the kit's contents, showing each screw type (M4, M5, M6, M8) with various lengths, and different types of washers and spacers, all clearly labeled with their dimensions.

The kit contains 92 pieces in total, including:

- **Screws:** M4, M5, M6, M8 in various lengths (e.g., 12mm, 16mm, 20mm, 25mm, 30mm, 35mm, 40mm, 45mm, 50mm).
- **Washers:** M4/M5 washers and M6/M8 washers.
- **Spacers:** 2.5mm M6/M8 spacers, 12mm M4/M5 spacers, and 20mm M6/M8 spacers.

Labeled for Hassle-Free Mounting



Image: The kit's components are organized into individual plastic bags, each bag explicitly labeled with the type and dimensions of the hardware it contains, such as 'M6x35mm Bolt - 4pcs'.

All components are sorted and labeled for accurate and easy selection during installation.

SPECIFICATIONS

Specification	Detail
Brand Name	Mount-It!
Model Number	MI-TVHWKIT
Item Weight	1 pound
Package Dimensions	7.99 x 3.54 x 1.34 inches
Material	Alloy Steel
Mounting Type	Wall Mount (Hardware Kit)
Compatible Devices	Monitor, Television
Minimum Compatible Size	19 Inches
Maximum Compatible Size	85 Inches

SETUP AND INSTALLATION

This hardware kit is designed to facilitate the mounting of your TV or monitor to a wall mount. The correct selection of screws, washers, and spacers is crucial for a secure and stable installation.

1. Determine VESA Compatibility and Screw Size

Most TVs and monitors have VESA mounting holes on their back. Consult your TV/monitor's manual to find the correct VESA pattern (e.g., 200x200mm, 400x400mm) and the required screw size (M4, M5, M6, or M8) and length. This information is typically found in the display's specifications or mounting section.



Image: The hardware kit is shown in front of a wall-mounted television, emphasizing its compatibility with all TV brands and sizes from 19 to 85 inches.

2. Select Appropriate Screws and Washers

Once you know the required screw size, locate the corresponding screws in your kit. The bags are clearly labeled to help you find the correct M-size and length. Use the appropriate washers (M4/M5 or M6/M8) with your selected screws to distribute pressure evenly and protect the TV's mounting surface.

Combine Spacers

for more options when mounting



Image: Close-up view of the labeled packaging for the hardware components, highlighting how each type of screw is clearly marked for hassle-free mounting.

3. Utilize Spacers if Necessary

Spacers are used to create a gap between the TV and the mounting bracket. This may be necessary for TVs with curved backs, irregular surfaces, or to accommodate cables. Choose the appropriate spacer length (2.5mm, 12mm, or 20mm) to ensure the screw does not bottom out in the TV's mounting hole or protrude too far.

Organized and Labeled by Type

M4 x 12mm Bolt - 4pcs

M4 x 35mm Bolt - 4pcs

M5 x 12mm Bolt - 4pcs

M5 x 35mm Bolt - 4pcs

M6 x 12mm Bolt - 4pcs

M6 x 20mm Bolt - 4pcs

M6 x 35mm Bolt - 4pcst

M8 x 16mm Bolt - 4pcs

M8 x 20mm Bolt - 4pcs

M8 x 25mm Bolt - 4pcs

M8 x 30mm Bolt - 4pcs

M8 x 35mm Bolt - 4pcs

M8 x 40mm Bolt - 4pcs

M8 x 45mm Bolt - 4pcs

M8 x 50mm Bolt - 4pcs

M4/M5 Washer - 8pcs

M6/M8 Washer - 8pcs

2.5mm M6/M8 Spacer - 8pcs

20mm M6/M8 Spacer - 4pcs

12mm M4/M5 Spacer - 4pcs



Image: Illustration showing how different sizes of spacers can be combined on a screw to achieve the desired standoff distance between the TV and the mount.

4. Attach to Wall Mount

Once the correct hardware is selected, align your TV with the wall mount. Insert the screws through the mounting bracket holes, then through any necessary spacers, and finally into the VESA mounting holes on the back of your TV. Tighten the screws securely, but do not overtighten, as this can damage the TV or the screws.

Pair with any Mount on the Market!

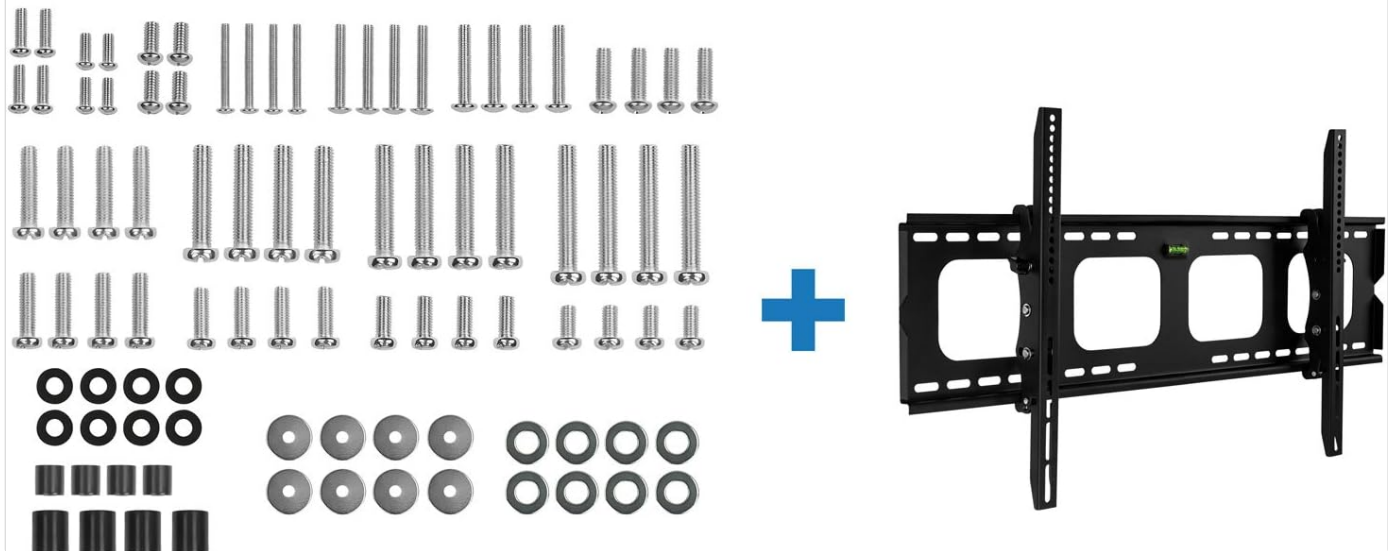


Image: The Mount-It! hardware kit is displayed alongside a standard TV wall mount, illustrating its universal compatibility with various mounting brackets.

USAGE GUIDELINES

- Always refer to your TV or monitor's specific manual for exact screw size and length requirements.
- Ensure screws are long enough to engage sufficient threads in the TV but not so long that they bottom out or damage internal components.
- Use washers to prevent screws from pulling through the mounting holes and to protect the TV's surface.
- Spacers are crucial for TVs with irregular backs or when additional clearance for cables is needed.
- Do not force screws. If you encounter resistance, re-check the screw size and alignment to avoid cross-threading.

MAINTENANCE

The Mount-It! hardware kit is designed for durability. No specific maintenance is required for the components themselves. However, it is recommended to periodically check the tightness of the screws securing your TV to the mount, especially after initial installation and during routine cleaning or adjustments. Ensure they remain snug but do not overtighten.

TROUBLESHOOTING

Screws Don't Fit / Too Loose / Too Tight

Issue: The screws do not thread into the TV's mounting holes, or they feel too loose/tight.

Solution:

- **Incorrect Size:** Double-check your TV's manual for the exact M-size (M4, M5, M6, M8) required. The kit provides a wide range, so ensure you've selected the correct diameter.
- **Incorrect Length:** If the screw is too long, it will bottom out before tightening. If too short, it won't engage enough threads. Use spacers or try a different screw length from the kit.
- **Cross-threading:** If the screw feels difficult to turn and grinds, you might be cross-threading. Remove the screw, realign it carefully, and try again. Do not force it. The metal can be soft, so gentle, straight insertion is key.

TV Not Flush with Mount / Gaps

Issue: There are gaps between the TV and the mounting bracket, or the TV is not sitting flush.

Solution:

- **Irregular TV Back:** Many TVs have curved or uneven backs. Use the appropriate spacers from the kit to create a flat mounting surface and ensure the TV sits securely against the mount.
- **Cable Clearance:** If cables are preventing a flush fit, use longer spacers to create the necessary clearance.

WARRANTY AND SUPPORT

Mount-It! products are designed for quality and durability. For specific warranty information regarding your MI-TVHWKIT, please refer to the warranty card included with your purchase or visit the official Mount-It! website. If you encounter any issues or have questions not covered in this manual, please contact Mount-It! customer support for assistance.

Mount-It! Customer Support:

Visit the [Mount-It! Store on Amazon](#) for product information and support resources.

Refer to the contact information provided on the product packaging or the official Mount-It! website for direct support channels.

© 2024 Mount-It!. All rights reserved.

Documents - Mount-It! – MI-TVHWKIT



[MOUNT-IT! 2020 Product Catalog](#)

Explore the comprehensive 2020 Product Catalog from MOUNT-IT!, showcasing a wide range of mounting solutions and office furniture. This catalog features TV mounts, monitor mounts, ergonomic desks, laptop accessories, tablet solutions, and various office essentials designed to enhance productivity and comfort in any environment.

lang:en score:15 filesize: 24.9 M page_count: 113 document date: 2020-12-30