

Ms.W ST-H309

Ms.W Face Massager ST-H309 User Manual

For Facial and Neck Skin Tightening and Lifting

1. INTRODUCTION

This manual provides detailed instructions for the safe and effective use of your Ms.W Face Massager ST-H309. This micro-vibrating electric beauty tool is designed to assist with facial and neck skin tightening, lifting, and reducing the appearance of wrinkles. Please read this manual thoroughly before first use and retain it for future reference.

2. PRODUCT OVERVIEW

2.1 Components

The Ms.W Face Massager ST-H309 includes the main device and a USB charging cable. Key components of the device are:

- **Protective Cover:** Shields the massage head when not in use.
- **Massage Head:** Features a heated surface and a row of six LED lights for various treatments.
- **ON / OFF Key:** Powers the device on or off.
- **Gear Switch Key:** Cycles through the different operating modes.
- **USB Charge Port:** For recharging the device's internal battery.

3-in-1

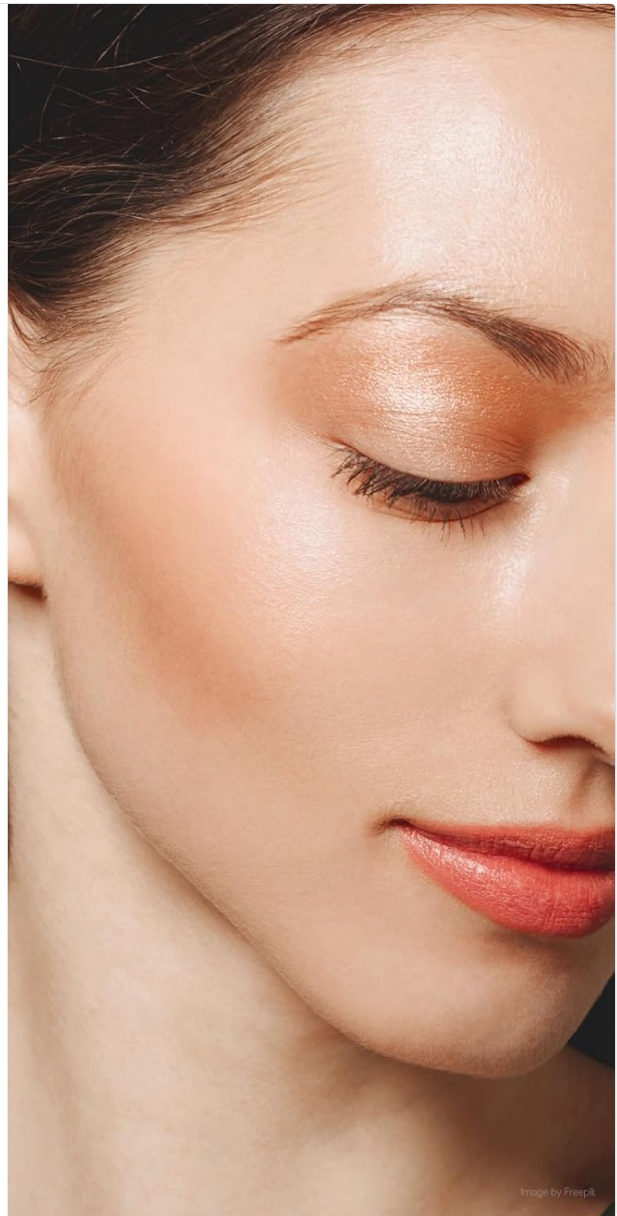


Figure 2.1: Diagram illustrating the main components of the Ms.W Face Massager, including the protective cover, massage head with LED lights, ON/OFF key, gear switch key, and USB charge port.

2.2 Features

The Ms.W Face Massager offers multiple functions to support skin care:

- Micro-vibration technology for skin stimulation.
- Heated massage head to assist with product absorption.
- Three distinct modes with varying vibration frequencies and LED light treatments.
- Designed for use on facial and neck areas.



Figure 2.2: The Ms.W Face Massager device, shown with an illustration of its application on the face.

3. SETUP

3.1 Charging the Device

Before initial use, fully charge the device. Connect the provided USB charging cable to the USB charge port on the device and plug the other end into a compatible USB power source (e.g., computer, wall adapter). The charging indicator will illuminate during charging and change when fully charged (refer to device specific indicator behavior if available).

4. OPERATING INSTRUCTIONS

4.1 General Usage

It is recommended to use the device daily for 5-10 minutes. Apply your preferred lotion, cream, or serum to your face and neck before use. The heated massage head is designed to help open pores and enhance the absorption of skincare products. The vibration massage can assist in reducing the appearance of sagging skin, puffiness, and wrinkles.

4.2 Operating Modes

The device features three distinct modes, each with specific characteristics:

Three functions in three modes

memory mode function make the device more easy to use

- First gear**
 - Vibration frequency at 6200 times/min
 - Tightens loose skin
 - Promotes collagen synthesis
 - Suitable for oily and sensitive skin
- Second gear**
 - 9500 times/min Vibration frequency
 - Magnetic heat therapy at 45°C temperature
 - Promotes skin surface microcirculation
 - Fights edema and calms skin
- Third gear**
 - 12500 times/min Vibration frequency
 - Magnetic heat therapy at 45°C temperature
 - Improves blood circulation
 - Eliminates wrinkles
 - Restores natural skin color

Figure 4.1: Overview of the three operating modes and their associated benefits.

1. First Gear (Blue Light Mode):

- Vibration frequency: Approximately 6200 times/minute.
- Aims to tighten loose skin.
- Promotes collagen synthesis.
- Suitable for oily and sensitive skin types.

2. Second Gear (Green Light Mode):

- Vibration frequency: Approximately 9500 times/minute.
- Features magnetic heat therapy at approximately 45°C.
- Promotes skin surface microcirculation.
- Aids in calming skin and reducing edema.

3. Third Gear (Red Light Mode):

- Vibration frequency: Approximately 12500 times/minute.
- Features magnetic heat therapy at approximately 45°C.

- Aims to improve blood circulation.
- May assist in reducing the appearance of wrinkles and restoring natural skin tone.

4.3 Application Techniques

Apply the device to your face and neck, adjusting to different massage points. Move the device gently in upward and outward strokes, following the contours of your face and neck. The device may provide an audible signal (e.g., a beep) to indicate when to change the massage area, typically every 60 seconds.



Figure 4.2: Visual guide demonstrating various application techniques for the Ms.W Face Massager on the face and neck.

4.4 Enhanced Product Absorption

The design of the Ms.W Face Massager, particularly with its heated massage head and vibration, is intended to enhance the absorption of skincare products into the skin.



Flush out toxins

Promote the elimination
of the toxins

Nutrients lead-in

Promote the absorption of
the nutrients

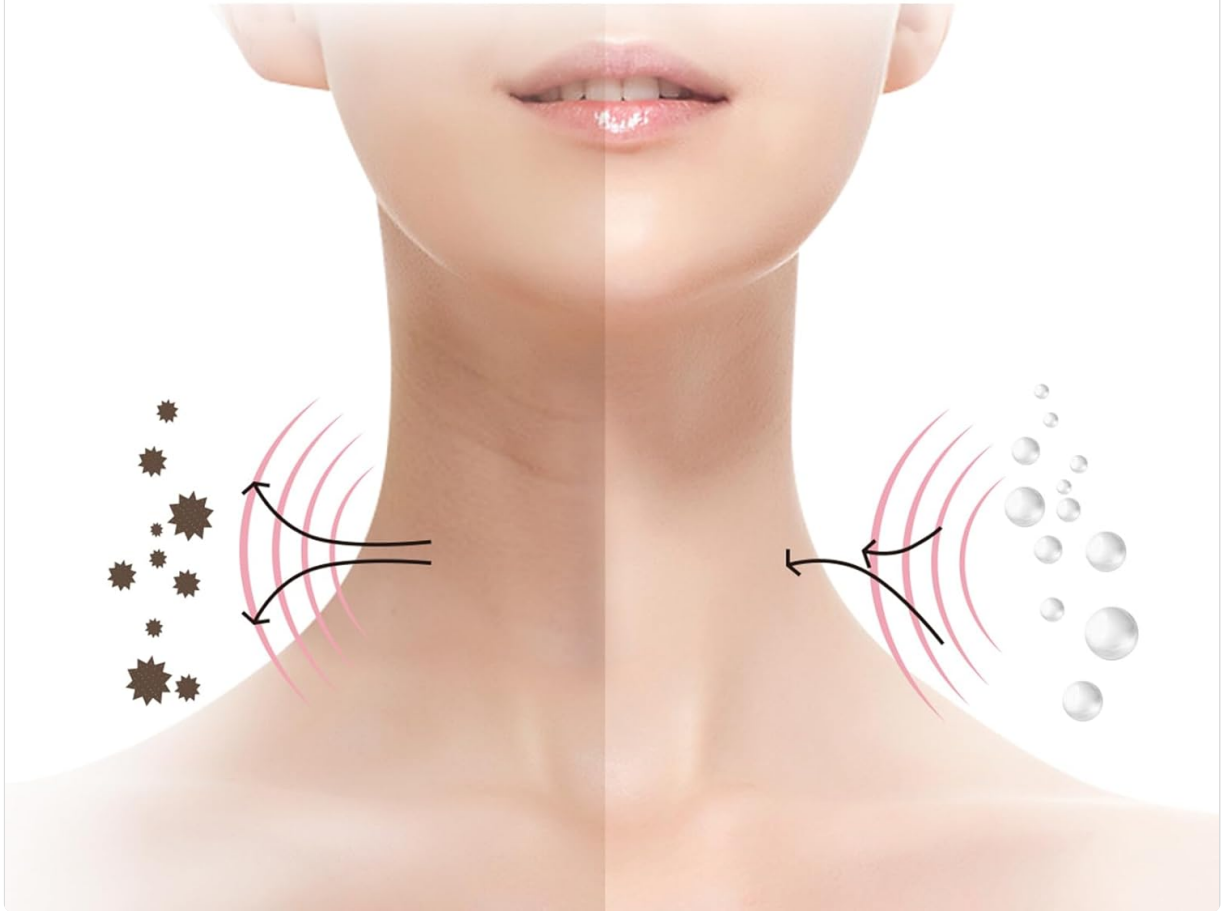


Figure 4.3: Diagram illustrating the concept of enhanced nutrient absorption and potential toxin elimination with device use.



Figure 4.4: Illustrative comparison of skin care product absorption rates with and without the use of the Ms.W Face Massager.

4.5 Potential Benefits Over Time

Consistent and long-term use of the device may contribute to a reduction in the appearance of fine lines, double chins, and neck wrinkles.

Experimental results show that long-term use can reduce your fine lines, double chins, neck wrinkle and so on



Figure 4.5: Illustrative examples of skin appearance before and after consistent use of the device, showing potential improvements in fine lines and skin texture.

5. MAINTENANCE

5.1 Cleaning

After each use, ensure the device is turned off and disconnected from any power source. Wipe the massage head and body of the device with a soft, damp cloth or a cleaning wipe. Do not submerge the device in water or use abrasive cleaners, as this may damage the product.

5.2 Storage

Store the device in a cool, dry place, away from direct sunlight and extreme temperatures. Keep the protective cover on the massage head when not in use to prevent damage.

6. TROUBLESHOOTING

6.1 Device Not Turning On

- Ensure the device is fully charged. Connect it to a power source and allow sufficient time for charging.

- Press and hold the ON/OFF key for a few seconds to ensure it registers.

6.2 No Vibration or Heat

- Check if the device is powered on and in an active mode.
- Ensure the massage head is in proper contact with the skin.
- If the issue persists, try fully recharging the device.

6.3 Skin Irritation

- Discontinue use immediately if you experience any discomfort or irritation.
- Ensure your skin is clean and free of any open wounds or severe conditions before use.
- Consult a dermatologist if irritation persists.

7. SPECIFICATIONS

Brand	Ms.W
Model Name	ST-H309
Item Model Number	FACE MASSAGER FOR WRINKLES
Manufacturer	Shenzhen Sist Technology Co. Ltd
Product Dimensions (L x W x H)	48 x 97 x 110 Millimeters (4.8 x 9.65 x 11 cm)
Item Weight	72 Grams
Material	Plastic
Color	Gold
Power Source	Corded Electric (USB rechargeable)
Batteries	1 Lithium Ion battery (included)
Included Components	Face Massager



Figure 7.1: Diagram illustrating the dimensions of the Ms.W Face Massager.

8. WARRANTY AND SUPPORT

For information regarding warranty coverage, product support, or service inquiries, please refer to the product packaging or contact the manufacturer directly. Keep your purchase receipt as proof of purchase.