

## Manuals+

[Q & A](#) | [Deep Search](#) | [Upload](#)

[manuals.plus](#) /

- › [Iseebiz](#) /
- › [Iseebiz Automatic Cat Feeder User Manual](#)

Iseebiz Iseebiz

# Iseebiz Automatic Cat Feeder User Manual

Model: Regular-Upgraded

## 1. INTRODUCTION

The Iseebiz Automatic Cat Feeder is designed to provide a convenient and reliable feeding solution for your small to medium-sized cats and dogs. With programmable meal times and portion control, this feeder ensures your pets receive their meals consistently, even when you are away. Its anti-clog design and dual power supply options offer peace of mind and uninterrupted feeding.





Figure 1: Front view of the Iseebiz Automatic Cat Feeder, showing its sleek design and the food dispensing area.



Figure 2: The Iseebiz Automatic Cat Feeder positioned between a dog and a cat, highlighting its suitability for various small to medium-sized pets.

Your browser does not support the video tag.

Video 1: An overview of the Iseebiz automatic cat feeder, demonstrating its features and how it helps manage pet feeding routines.

Your browser does not support the video tag.

Video 2: A demonstration of the Iseebiz Automatic Cat Feeder, emphasizing its role in ensuring pets are fed consistently and never miss a meal.

## 2. SAFETY INFORMATION

---

- Ensure the feeder is placed on a stable, level surface to prevent tipping.
- Do not immerse the main unit in water or any other liquid. The food tank is removable and washable, but the main unit is not.
- Use only the provided 5V DC adapter or 3 D-cell alkaline batteries (not included).
- Keep out of reach of children and pets when not in use or during cleaning.
- Regularly inspect the power cord for damage. If damaged, discontinue use immediately.
- This device is designed for dry pet food only. Do not use with wet food, canned food, or treats larger than 0.47 inches in diameter to prevent clogging.

## 3. PACKAGE CONTENTS

---

Please check the package contents to ensure all items are present:

- 1 x Iseebiz Automatic Cat Feeder (Main Unit)
- 1 x User Manual
- 1 x Power Adapter
- 1 x USB Cable

## 4. PRODUCT OVERVIEW

---

Familiarize yourself with the components of your Iseebiz Automatic Cat Feeder:

- **Food Tank:** Top compartment for storing dry pet food.
- **Control Panel:** Front-facing display and buttons for programming and settings.
- **Food Outlet:** Where dispensed food exits the feeder.
- **Food Tray:** Removable tray for pets to eat from.
- **Anti-Clog IR Detector:** Sensor to prevent food clogging or overflow.
- **Rotating Impeller:** Internal mechanism to precisely dispense food.
- **Battery Compartment:** Located at the bottom for D-cell batteries.
- **Power Port:** For connecting the USB cable and power adapter.

# Clog -Free Design

Stirs the food to avoid clogging and serves right portions



Figure 3: Detailed view of the feeder's anti-clog design, featuring a rotating cap, ABS rotating impeller, and separate baffle to ensure smooth food distribution and prevent blockages.

## Washable Food Tank





Figure 4: The control panel of the feeder, illustrating buttons for setting meal times (Breakfast, Lunch, Dinner, 4th Meal), On/Off, Feeding Weight, Hour, Minute, Manual Feed, Time Setting, Low Battery indicator, Microphone, and Playback.

## 5. SETUP

### 5.1 Power Supply

The Iseebiz Automatic Cat Feeder supports dual power supply options for reliable operation:

- **AC Adapter:** Connect the provided USB cable to the feeder's power port and plug the adapter into a wall outlet.
- **Batteries:** For backup or portable use, install 3 D-cell alkaline batteries (not included) into the battery compartment located at the bottom of the unit. It is recommended to use both power sources to ensure continuous feeding during power outages.



Figure 5: Illustration of the dual power supply options for the feeder, showing the use of 3 D-cell batteries (not included) or the power adapter.

# Anti-Clog Design

## Rotating Cap


Stir the food to distribute it evenly in the food tray

## ABS Rotating Impeller

Precisely divide food to prevent clogging

## Seperate Baffle

Make in the food came out in average portions

Food Size	How many grams in each cup?		
≤0.47inch	100g	20 portions	1 cup
	50g	10 portions	1/2 cup
Φ Food diameter ≤ 0.47inch	 Approximately 5g /Portion		

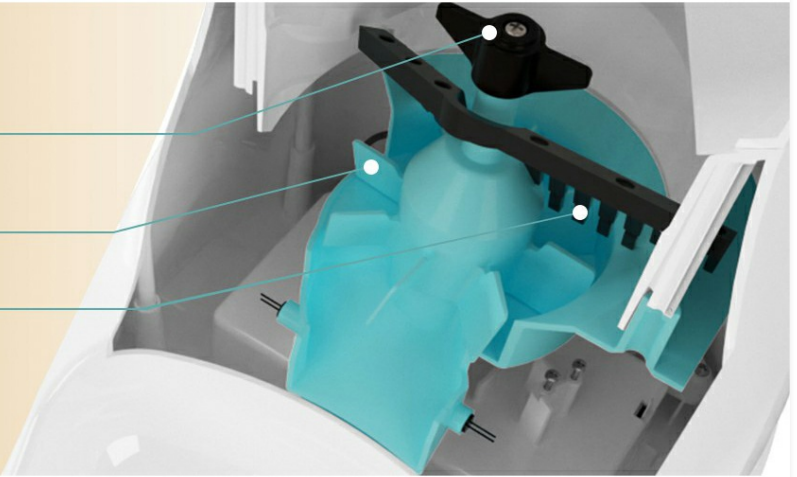


Figure 6: Visual guide for setting up the feeder, including steps for accessing the food tank and battery compartment.

## 5.2 Food Tank Installation and Filling

1. Rotate the top lid counter-clockwise to unlock and remove it.
2. Pour dry pet food into the food tank. Ensure the food size is appropriate (max 0.47 inches diameter) to prevent clogging. The 3L capacity provides approximately 12.65 cups of food, sufficient for about 15 days for small to medium-sized cats.
3. Place the top lid back on and rotate clockwise to secure it. The screw-lock design prevents pets from opening it.
4. Optionally, replace the desiccant bag in the lid to maintain food freshness. Open the top cover with a small screwdriver to access the desiccant box.

## 6. OPERATING INSTRUCTIONS

### 6.1 Setting the Current Time

To set the current time on the feeder's display:

1. Press and hold the "Time" button until the hour display flashes.
2. Use the "Hour" and "Minute" buttons to adjust the time.
3. Press the "Time" button again to confirm and save the setting.

### 6.2 Setting Meal Schedules and Portions

The feeder allows you to program up to 4 meals per day (Breakfast, Lunch, Dinner, 4th Meal) with customizable portions (1-39 portions).

1. Press and hold the desired meal button (e.g., "Breakfast") until the time display flashes.
2. Use the "Hour" and "Minute" buttons to set the feeding time for that meal.
3. Press the meal button again to confirm the time.
4. The portion display will now flash. Use the "Feeding Weight" buttons to adjust the number of portions (1-39).
5. Press the meal button one more time to confirm the portion size.
6. To enable or disable a meal, use the "On/Off" button for that specific meal.

## Flexible Meal Schedule



39 Portion



4 Meals



Easy Cleaning



Figure 7: The feeder's capabilities for flexible meal scheduling, including up to 39 portion sizes, 4 meals per day, and easy cleaning.

### 6.3 Voice Recording

Record a 10-second personalized voice message to call your pet at meal times:

1. Press and hold the "MIC" (Microphone) button to start recording. Speak clearly into the microphone.
2. Release the "MIC" button to finish recording (maximum 10 seconds).
3. Press the "Play" button to listen to your recorded message.
4. The recorded message will play automatically when food is dispensed. You can re-record at any time to change the message.





## 3L Food tank

Provides enough food for small to medium-size dog  
Weight≤22LB for 7 days.

Small and Midium size cat Weight≤12LB for 15 days

It's time to eat!

Buddy!

Figure 8: The voice recording feature, allowing you to record a personalized message to call your pet at feeding times.

### 6.4 Manual Feeding

To dispense food manually outside of scheduled meal times:

- Press the "Manual" button once to dispense one portion of food immediately.
- Press multiple times for additional portions.

## 7. MAINTENANCE

### 7.1 Cleaning

Regular cleaning ensures hygiene and proper functioning of the feeder:

- The food tank and food tray are detachable and washable. Hand wash only with mild soap and water.
- Ensure all parts are completely dry before reassembling.
- Do NOT wash the main unit (the part below the hopper) as it contains electronic components. Wipe it clean with a damp



cloth.

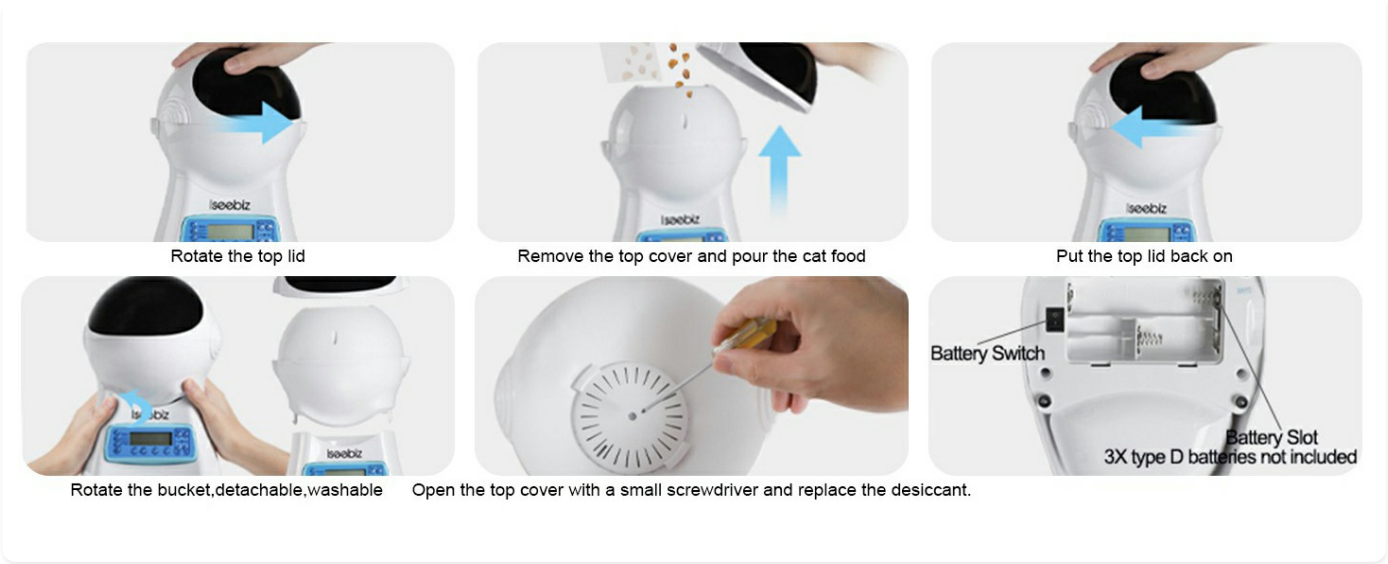


Figure 9: The washable food tank being cleaned, with a clear indication that the main unit should not be submerged in water.

7.2 Battery Replacement

When the low battery indicator lights up, replace the D-cell batteries promptly to ensure continuous operation, especially if relying on battery backup.

8. TROUBLESHOOTING

Problem	Possible Cause	Solution
Feeder not dispensing food.	Food tank empty; food clogged; power issue; incorrect settings.	Refill food tank; check for clogs in the dispenser mechanism; ensure power adapter is connected or batteries are fresh; verify meal schedule settings.
Food dispensing too much/too little.	Incorrect portion settings.	Adjust the portion size for each meal in the settings.
Voice recording not playing or unclear.	Recording error; low volume.	Re-record the message, ensuring you speak clearly and close to the microphone.
Feeder not turning on.	No power; batteries drained.	Check power adapter connection; replace D-cell batteries.

9. SPECIFICATIONS

Feature	Detail
Brand	Iseebiz
Model	Regular-Upgraded
Capacity	3L (approx. 12.65 cups)
Meal Schedule	Up to 4 meals/day
Portion Control	1-39 portions per meal

Feature	Detail
Voice Recording	10-second personalized message
Power Supply	5V DC adapter or 3 x D-cell batteries (not included)
Material	Plastic
Dimensions (LxWxH)	12.6 x 9.45 x 8.27 inches
Item Weight	3.3 pounds (1.5 kg)
Target Species	Cats, Small to Medium Dogs

## 10. WARRANTY & SUPPORT

The Iseebiz Automatic Cat Feeder comes with a manufacturer's warranty. For specific warranty details and customer support, please refer to the warranty card included in your package or visit the official Iseebiz website. You can also find additional support and FAQs on the product's Amazon page.

**Online Resources:**

- Official Iseebiz Store: [Visit the Iseebiz Store](#)
- Product Page: [Amazon Product Page](#)
- User Manual (PDF): [Download PDF Manual](#)

