



Manuals.plus /

› Solatec /

› Solatec Solar Powered Bird Bath Fountain Pump 1.4W User Manual

Solatec B077215M1R

Solatec Solar Powered Bird Bath Fountain Pump 1.4W User Manual

Model: B077215M1R

1. INTRODUCTION

Thank you for purchasing the Solatec Solar Powered Bird Bath Fountain Pump. This manual provides essential information for the safe and efficient operation, installation, and maintenance of your new solar fountain pump. Please read these instructions carefully before use and retain them for future reference.

2. PRODUCT FEATURES

- **Eco-Friendly Operation:** This solar pump is powered entirely by solar energy, eliminating the need for batteries or external electricity.
- **Adjustable Water Patterns:** Includes 4 different nozzle heads to create various water spray patterns. Water height can reach approximately 30-50 cm.
- **Versatile Applications:** Suitable for bird baths, fish tanks, small ponds, pools, gardens, and water circulation for oxygenation.
- **Floating Design:** Designed to float on water, activating automatically within seconds when the solar panel receives direct sunlight. Performance improves with brighter sunlight.

3. PACKAGE CONTENTS

Please check the package for the following items:

- 1 x Solatec Solar Powered Fountain Pump
- 4 x Nozzle Heads (various patterns)

- 1 x User Manual

4. SETUP INSTRUCTIONS

1. **Unpack Components:** Carefully remove all items from the packaging.
2. **Attach Nozzle:** Select your desired nozzle head and firmly attach it to the pump's outlet.
3. **Place in Water:** Ensure your bird bath, pond, or container has sufficient water for the pump to be fully submerged. Gently place the solar fountain pump onto the water surface.
4. **Sunlight Exposure:** Position the pump where the solar panel receives full, direct sunlight. The fountain will begin operating automatically within a few seconds of adequate sun exposure.



Image: Solatec Solar Fountain Pump operating in a bird bath.

5. OPERATING INSTRUCTIONS

- The Solatec Solar Fountain Pump operates automatically when exposed to direct sunlight.
- The intensity and height of the water spray are directly dependent on the amount and intensity of sunlight received by the solar panel.
- The pump does not store energy; it will stop operating when sunlight is insufficient (e.g., cloudy weather, shade, night).
- To change the water pattern, remove the pump from the water, detach the current nozzle, and attach a different one. Ensure the pump is fully submerged before re-activating.

Your browser does not support the video tag.

Video: Demonstration of the Solatec Solar Fountain Pump operating in a bird bath.

6. MAINTENANCE

Regular maintenance ensures optimal performance and longevity of your solar fountain pump.

- **Clean the Pump:** Regularly clean the pump to prevent it from getting blocked by dirt, debris, or algae. This includes cleaning the filter and the nozzle.
- **Maintain Water Level:** Always ensure there is enough water in the fountain or container for the pump to remain fully submerged. Running the pump dry can cause damage.
- **Solar Panel Cleaning:** Keep the solar panel clean and free from dust, leaves, or other obstructions to ensure maximum sunlight absorption. A leaf shading even one part of the panel can affect its function.
- **Winter Storage:** In freezing conditions, remove the pump from the water and store it indoors to prevent damage.

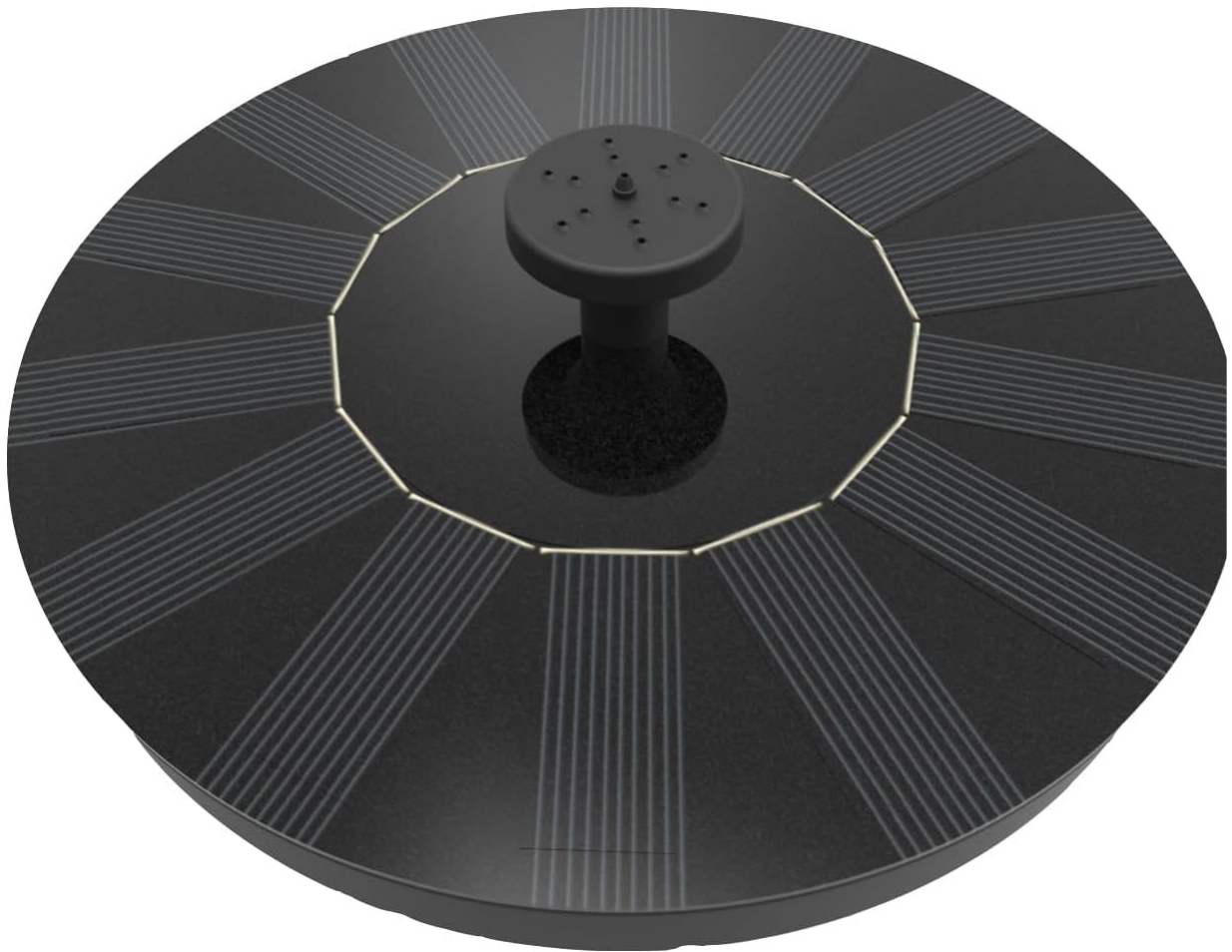


Image: Close-up view of the Solatec Solar Fountain Pump, showing the solar panel and pump outlet.

7. TROUBLESHOOTING

Problem	Possible Cause	Solution
Fountain not working or weak spray.	Insufficient sunlight. Pump or nozzle is blocked. Water level is too low.	Ensure the solar panel receives full, direct sunlight. Clean the pump, filter, and nozzle thoroughly. Add more water to the container to fully submerge the pump.
Fountain stops intermittently.	Temporary shade (clouds, leaves). Water level fluctuations.	Relocate the fountain to an area with consistent direct sunlight. Monitor and maintain consistent water levels.
Water sprays out of the container.	Nozzle spray pattern is too high/wide. Wind conditions. Pump drifting to the edge.	Use a different nozzle head with a lower or narrower spray. Consider placing rocks or weights to stabilize the pump in the center of the container. Relocate to a less windy area or use a deeper container.

8. SPECIFICATIONS

- **Brand:** Solatec
- **Model:** B077215M1R
- **Power Source:** Solar Powered
- **Material:** Plastic
- **Color:** Black
- **Product Dimensions:** 6.3"L x 6.3"W x 1.6"H
- **Item Weight:** 7.37 Ounces
- **Max Water Height:** 30-50 cm (depending on nozzle and sunlight)

9. SAFETY INFORMATION

- Do not operate the pump without water. Running dry can cause permanent damage.
- Ensure the pump is fully submerged in water during operation.
- Keep children and pets away from the fountain area, especially during operation, to prevent accidental splashing or ingestion of water.
- Do not attempt to disassemble or modify the pump. This will void the warranty and may cause malfunction.
- Handle the solar panel with care to avoid damage.

10. WARRANTY AND SUPPORT

For warranty information or technical support, please refer to the contact details provided with your purchase or visit the official Solatec website. Keep your proof of purchase for warranty claims.

