

Southco M1-61-8

# Southco M1-61-8 Series Flush Pull Latch Instruction Manual

Model: M1-61-8 | Brand: Southco

## 1. PRODUCT OVERVIEW

This manual provides detailed instructions for the installation, operation, and maintenance of the **Southco M1-61-8 Series Electropolished Stainless Steel 316 Flush Pull Push-to-Close Latch**. This high-quality latch is designed for secure and reliable closure in various applications, offering durability and a flush appearance.

### Key Features

- Single, round-hole installation for simplified mounting.
- Constructed from corrosion-resistant materials, ensuring longevity in harsh environments.
- Features a slightly angled pawl to ensure a tight grip on the keeper within specified tolerances.
- Spring-loaded handles are incorporated to help prevent rattling during use.
- Capable of withstanding a maximum static load of 835 N (187 lbf).



Image 1.1: Front view of the Southco M1-61-8 Series Electropolished Stainless Steel Flush Pull Latch, showing its circular design and integrated pull handle.

## 2. SAFETY INFORMATION

---

Please read and understand all instructions before installing or operating the latch. Failure to follow these instructions may result in product damage or personal injury.

- Always wear appropriate personal protective equipment (PPE), such as safety glasses and gloves, during installation.
- Ensure the mounting surface is stable and capable of supporting the latch and its intended load.
- Do not exceed the maximum static load of 835 N (187 lbf).
- Use only the specified tightening torque for mounting screws to prevent damage to the latch or mounting surface.
- Keep small parts away from children to prevent choking hazards.

## 3. PACKAGE CONTENTS

---

Verify that all components are present and undamaged upon opening the package. If any items are missing

or damaged, contact your supplier immediately.

- 1 x Southco M1-61-8 Series Flush Pull Push-to-Close Latch
- Mounting Hardware (typically included, verify with product packaging)

## 4. INSTALLATION GUIDE

The M1-61-8 latch is designed for straightforward installation into a single round hole.

1. **Prepare the Mounting Surface:** Ensure the panel thickness is within the specified range of 0.75" to 0.275" and the grip range is between 0.98" and 1.02". Mark the center point for the latch hole.
2. **Drill the Hole:** Using an appropriate drill bit, create a round hole of the correct diameter for the latch body. Ensure the hole is clean and free of burrs.
3. **Insert the Latch:** Carefully insert the latch into the prepared hole from the front side of the panel.
4. **Secure the Latch:** From the rear of the panel, attach the retaining nut or mounting bracket (if applicable) and tighten the mounting screws. Apply a maximum tightening torque of **1.7 Nm (15 in lbf)** to prevent overtightening and damage.
5. **Verify Operation:** Test the latch mechanism to ensure it operates smoothly and securely engages with its keeper.

## 5. OPERATING INSTRUCTIONS

The Southco M1-61-8 is a push-to-close latch, designed for simple and intuitive operation.

1. **To Close:** Gently push the panel or door until the latch mechanism engages with its keeper. The flush pull handle will retract and sit flush with the latch body, indicating a secure closure.
2. **To Open:** Press firmly on the flush pull handle. This action will disengage the latch mechanism, allowing you to pull the panel or door open.

## 6. MAINTENANCE

Regular maintenance will ensure the longevity and optimal performance of your Southco latch.

- **Inspection:** Periodically inspect the latch for any signs of wear, corrosion, or damage. Check that all mounting hardware remains secure.
- **Cleaning:** Clean the latch surface with a soft cloth and a mild, non-abrasive detergent. Avoid harsh chemicals or abrasive materials that could damage the electropolished finish.
- **Lubrication:** The electropolished stainless steel construction generally requires minimal lubrication. However, if the latch mechanism becomes stiff, a small amount of silicone-based lubricant can be applied to the moving components.

## 7. TROUBLESHOOTING

Refer to the table below for common issues and their potential solutions.

Issue	Possible Cause	Solution
-------	----------------	----------

Issue	Possible Cause	Solution
Latch does not close securely.	Incorrect panel thickness or grip range; obstructions; loose mounting.	Verify panel thickness (0.75"-0.275") and grip range (0.98"-1.02"). Check for debris or obstructions. Ensure mounting screws are tightened to 1.7 Nm (15 in lbf).
Latch is stiff to operate.	Accumulation of dirt or debris; lack of lubrication.	Clean the latch thoroughly. Apply a small amount of silicone-based lubricant to moving parts if necessary.
Latch rattles when closed.	Loose mounting; damaged spring mechanism.	Ensure all mounting hardware is secure and tightened to specification. Inspect the spring-loaded handle mechanism for any damage.

## 8. PRODUCT SPECIFICATIONS

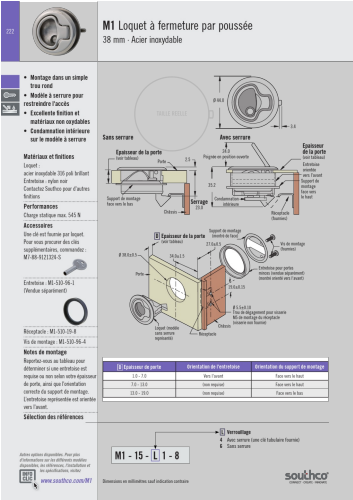
Detailed specifications for the Southco M1-61-8 Series Flush Pull Latch.

Specification	Value
Brand	Southco
Item Model Number	M1-61-8
Material	Stainless Steel
Product Dimensions (L x W x H)	5 x 3 x 2 inches
Item Weight	0.6 Pounds (9.6 ounces)
Panel Thickness Range	0.75" - 0.275"
Grip Range	0.98" - 1.02"
Maximum Static Load	835 N (187 lbf)
Maximum Tightening Torque	1.7 Nm (15 in lbf)
UPC	817382012046
Date First Available	November 12, 2013

## 9. WARRANTY AND SUPPORT

For detailed warranty information, technical support, or to inquire about replacement parts, please contact Southco customer service directly. Refer to the official Southco website ([www.southco.com](http://www.southco.com)) for the most current contact details and comprehensive warranty terms applicable to your region.

Documents - Southco – M1-61-8

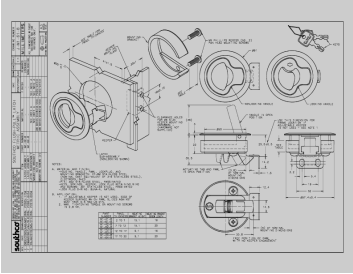


[pdf] Catalog

Page du catalogue M1 61 8 Loquet à fermeture par poussée Moyenne Acier inoxydable Southco m1 fp fr files southco static Literature 42 1 Blanc |||

M1 Loquet fermeture par pousse 222 38 mm Acier inoxydable Montage dans un simple trou rond Modle serrure pour restreindre l'accès Excellente finition et matériaux non oxydables Condamnation intérieure sur le mode serrure Matériaux et finitions Loquet : acier inoxydable 316 poli brillant Entret...

lang:fr score:19 filesize: 2.14 M page\_count: 4 document date: 2019-04-16



[pdf]

J M1 61 8 revG pff sabinc Schemi Tecnici Chiusure a spinta vista Intermedia Acciaio inox Southco files southco static JDrawing |||

...

lang:fr score:14 filesize: 332.26 K page\_count: 1 document date: 2019-01-28