

## OVENTE HS560B

# OVENTE HS560B Immersion Hand Blender User Manual

## 1. INTRODUCTION AND OVERVIEW

This manual provides instructions for the safe and efficient use of your OVENTE HS560B Immersion Hand Blender. This appliance is designed for blending and mixing soft foods, making it suitable for preparing smoothies, shakes, purees, sauces, and baby food. It features a 300-watt motor and two blending speeds for versatile use.





*Image 1.1: OVENTE HS560B Immersion Hand Blender, showcasing its sleek black design and stainless steel blending shaft.*

## 2. PRODUCT COMPONENTS

Your OVENTE HS560B Immersion Hand Blender consists of two primary components:

- **Motor Body:** The main unit containing the 300-watt motor and speed control buttons.
- **Blending Shaft:** A detachable shaft made of food-grade stainless steel with integrated blades and a protective guard.



## **ADJUSTABLE**

Pulse-activated sensor has a Low and High setting

## **FOOD-GRADE STAINLESS STEEL**

With increased durability to withstand high temperatures

*Image 2.1: The OVENTE Immersion Hand Blender showing its two main detachable parts: the motor body and the stainless steel blending shaft.*



## NON-SLIP HANDLE

For safe, effortless use

*Image 2.2: A detailed view of the food-grade stainless steel blending shaft, highlighting the blades and the protective metal guard designed to prevent scratching cookware.*

### 3. SETUP

Before first use, ensure all packaging materials are removed. Wash the blending shaft thoroughly with warm, soapy water, then rinse and dry. The motor body can be wiped clean with a damp cloth.

#### Assembly

1. Align the blending shaft with the motor body.
2. Push the shaft onto the motor body and twist clockwise until it locks securely into place.



*Image 3.1: The detachable blending shaft, ready to be connected to the motor body for assembly.*

## Power Connection

Plug the power cord into a standard 120V electrical outlet. The blender is now ready for use.

## 4. OPERATING INSTRUCTIONS

The OVENTE HS560B Immersion Hand Blender features two speed settings for optimal blending control.

### Speed Settings

- **Low Speed:** Press the top button for gentle blending, ideal for softer ingredients or achieving a coarse texture.
- **High Speed:** Press the bottom button for powerful blending, suitable for tougher ingredients, crushing ice, or achieving a smooth consistency.

To operate, immerse the blending shaft into your ingredients. Press and hold the desired speed button. Release the button to stop blending. For best results and to prevent overheating, operate the hand blender in one-minute intervals or less.





## **DETACHABLE SHAFT**

Dishwasher-safe shaft easily attaches to the body;  
simply twist to detach for easy cleaning

*Image 4.1: A user demonstrating the blending process with the OVENTE Immersion Hand Blender in a bowl.*



## MULTI-USE

Make smoothies, soups, marinades, sauces,  
and much more

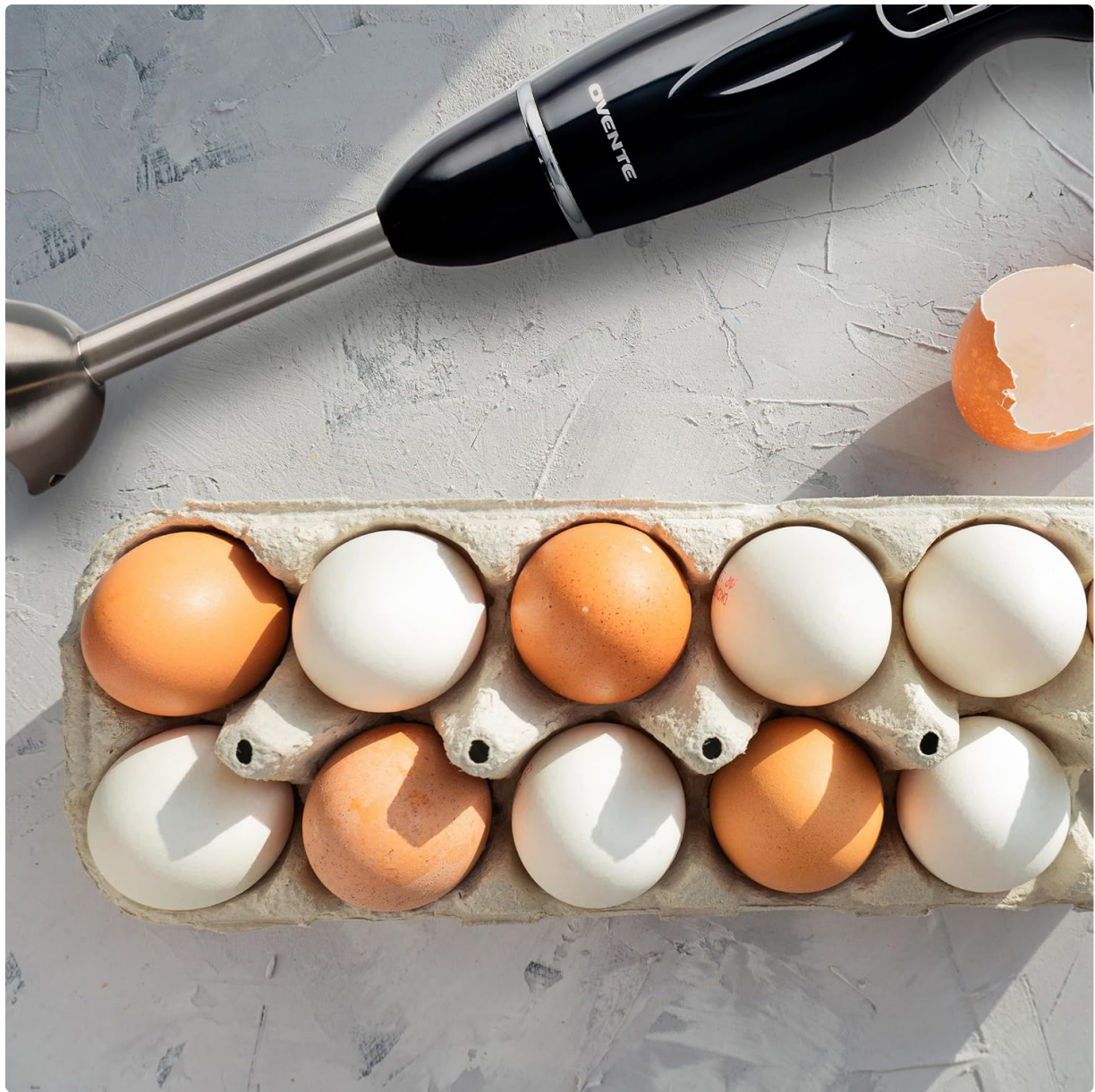
*Image 4.2: The immersion blender in action, creating a green smoothie, demonstrating its ability to blend directly in a glass.*





*Image 4.3: An illustration of the blender's multi-use capabilities, showing it alongside smoothies, pancakes, and soup.*





*Image 4.4: The immersion blender being used to create a smooth tomato soup, highlighting its effectiveness for pureeing hot liquids.*

## 5. CLEANING AND MAINTENANCE

Proper cleaning and maintenance ensure the longevity and hygiene of your immersion blender.

### Cleaning Instructions

1. Unplug the appliance from the power outlet before cleaning.
2. To detach the blending shaft, twist it counter-clockwise and pull it away from the motor body.
3. The detachable blending shaft is dishwasher-safe. Alternatively, it can be hand-washed with warm, soapy water.
4. Wipe the motor body clean with a soft, damp cloth. Do not immerse the motor body in water or any other liquid.
5. Ensure all parts are completely dry before reassembling or storing.



Image 5.1: The detachable blending shaft placed in a dishwasher for convenient cleaning.

## 6. TROUBLESHOOTING

If you encounter issues with your OVENTE Immersion Hand Blender, please refer to the following common solutions:

- **Appliance does not turn on:** Ensure the power cord is securely plugged into a functional electrical outlet. Verify that the blending shaft is correctly attached to the motor body.
- **Motor runs slowly or struggles:** Check that the ingredients are not too dense or frozen. Cut larger ingredients into smaller pieces. Do not overload the blender.
- **Excessive vibration or noise:** Ensure all parts are assembled correctly and securely. Avoid operating the blender in an empty container.

If problems persist, please contact OVENTE customer service.

## 7. SPECIFICATIONS

Feature	Specification
---------	---------------



Brand	OVENTE
Model Number	HS560B
Power	300W
Number of Speeds	2 (Low, High)
Special Features	2-Speeds Setting, BPA Free, Slim stick, High Performance
Blade Material	Stainless Steel
Product Dimensions	2.5"D x 2.5"W x 14.8"H
Item Weight	1.4 pounds
Power Source	Corded Electric
Voltage	120.0V
Control Type	Push Button



Image 7.1: The OVENTE Immersion Hand Blender illustrating its compact dimensions for easy handling and storage.

## 8. WARRANTY AND SUPPORT

OVENTE warrants that this product shall be free from defects in material and workmanship under normal use and conditions for **1 year from the original purchase date**.

For customer service, support, or warranty claims, please contact OVENTE directly. Refer to the product packaging or the official OVENTE website for contact information.