

Manuals.plus /

- › MikroTik /
- › MikroTik SXTsq Lite5 (RBSXTsq5nD) Outdoor Wireless Device User Manual

MikroTik RBSXTsq5nD

MikroTik SXTsq Lite5 (RBSXTsq5nD) Outdoor Wireless Device User Manual

Model: RBSXTsq5nD | Brand: MikroTik

1. INTRODUCTION

The MikroTik SXTsq Lite5 (RBSXTsq5nD) is a compact and lightweight outdoor wireless device featuring an integrated antenna. It is designed for establishing reliable point-to-point links over distances up to 12 kilometers or for use as a Customer Premises Equipment (CPE) unit. This device is built to be weatherproof and offers straightforward mounting options.

This manual provides essential information for the proper installation, configuration, and maintenance of your SXTsq Lite5 device.



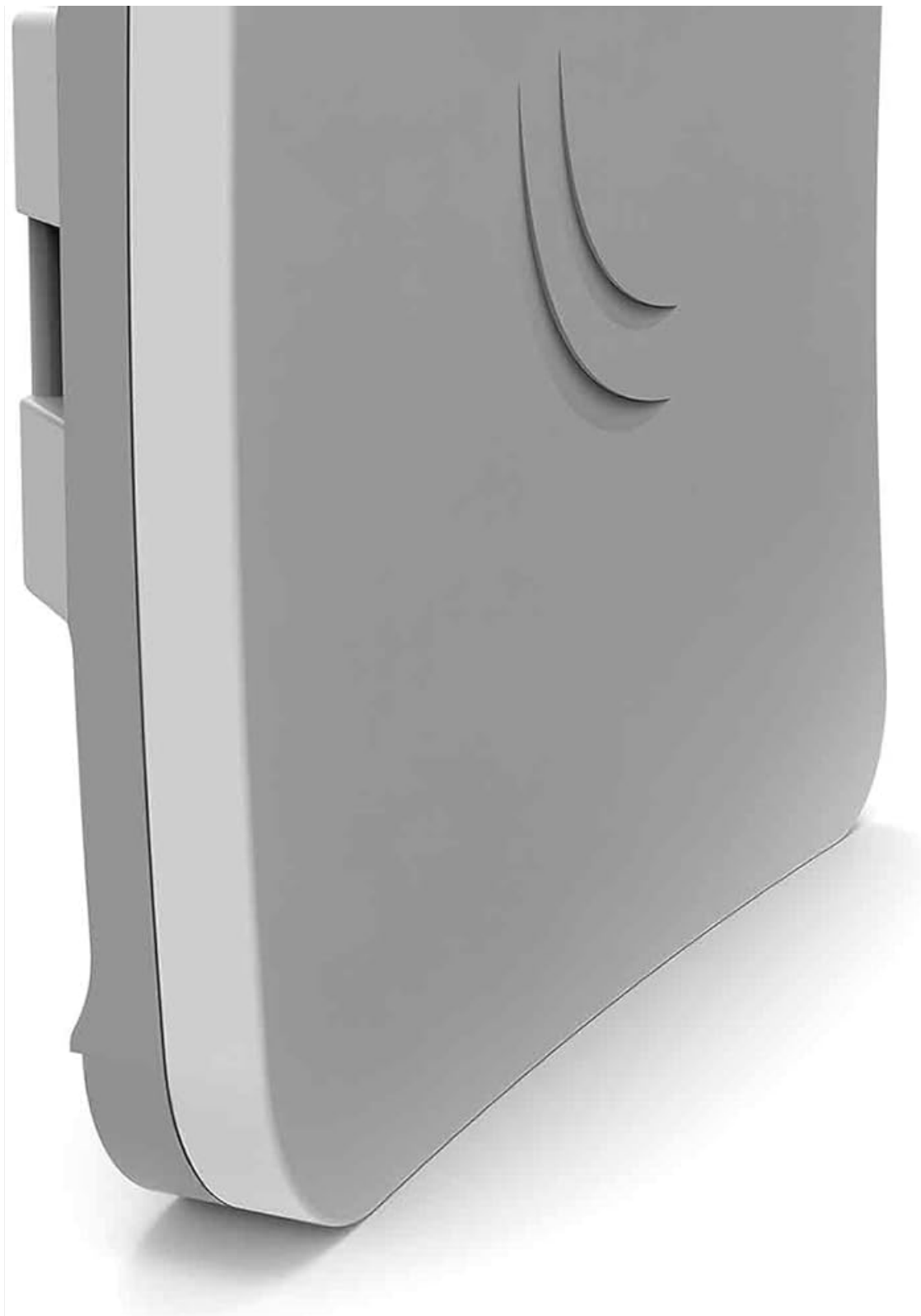


Figure 1: Front-side view of the MikroTik SXTsq Lite5 outdoor wireless device.

2. PACKAGE CONTENTS

Upon opening the package, verify that all components are present and undamaged. The standard package for the SXTsq Lite5 (RBSXTsq5nD) typically includes:

- MikroTik SXTsq Lite5 device
- Power adapter
- PoE injector
- Mounting strap or bracket



Figure 2: Contents of the MikroTik SXTsq Lite5 retail package, including the device, power adapter, and mounting accessories.

3. SETUP AND INSTALLATION

The SXTsq Lite5 is designed for outdoor installation on poles or masts. Follow these steps for proper setup:

3.1. Mounting the Device

1. **Choose a Location:** Select a mounting location that provides a clear line of sight to the target device for optimal wireless performance.
2. **Attach Mounting Bracket:** Secure the provided mounting bracket to the back of the SXTsq Lite5 device.

3. **Secure to Pole/Mast:** Use the included metal strap to firmly attach the device with its bracket to a vertical or horizontal pole. Ensure the device is stable and cannot rotate freely.
4. **Optional: QuickMount Pro:** For more precise alignment and angle adjustment, the separately available QuickMount Pro accessory can be used. This allows for adjustment in various angles.



Figure 3: The MikroTik SXTsq Lite5 device shown with its mounting bracket, ready for pole installation.

3.2. Connecting Power and Ethernet

1. **Open Ethernet Port Cover:** Locate the Ethernet port on the bottom of the device and carefully open its weatherproof cover.
2. **Connect Ethernet Cable:** Insert a standard Ethernet cable into the device's 10/100 Ethernet port.
3. **Connect to PoE Injector:** Connect the other end of the Ethernet cable to the "PoE" port on the provided Power over Ethernet (PoE) injector.
4. **Connect to Network/PC:** Connect another Ethernet cable from the "LAN" port of the PoE injector to your network switch, router, or directly to a computer for initial configuration.
5. **Apply Power:** Plug the power adapter into the PoE injector and then into an electrical outlet. The device will power on.

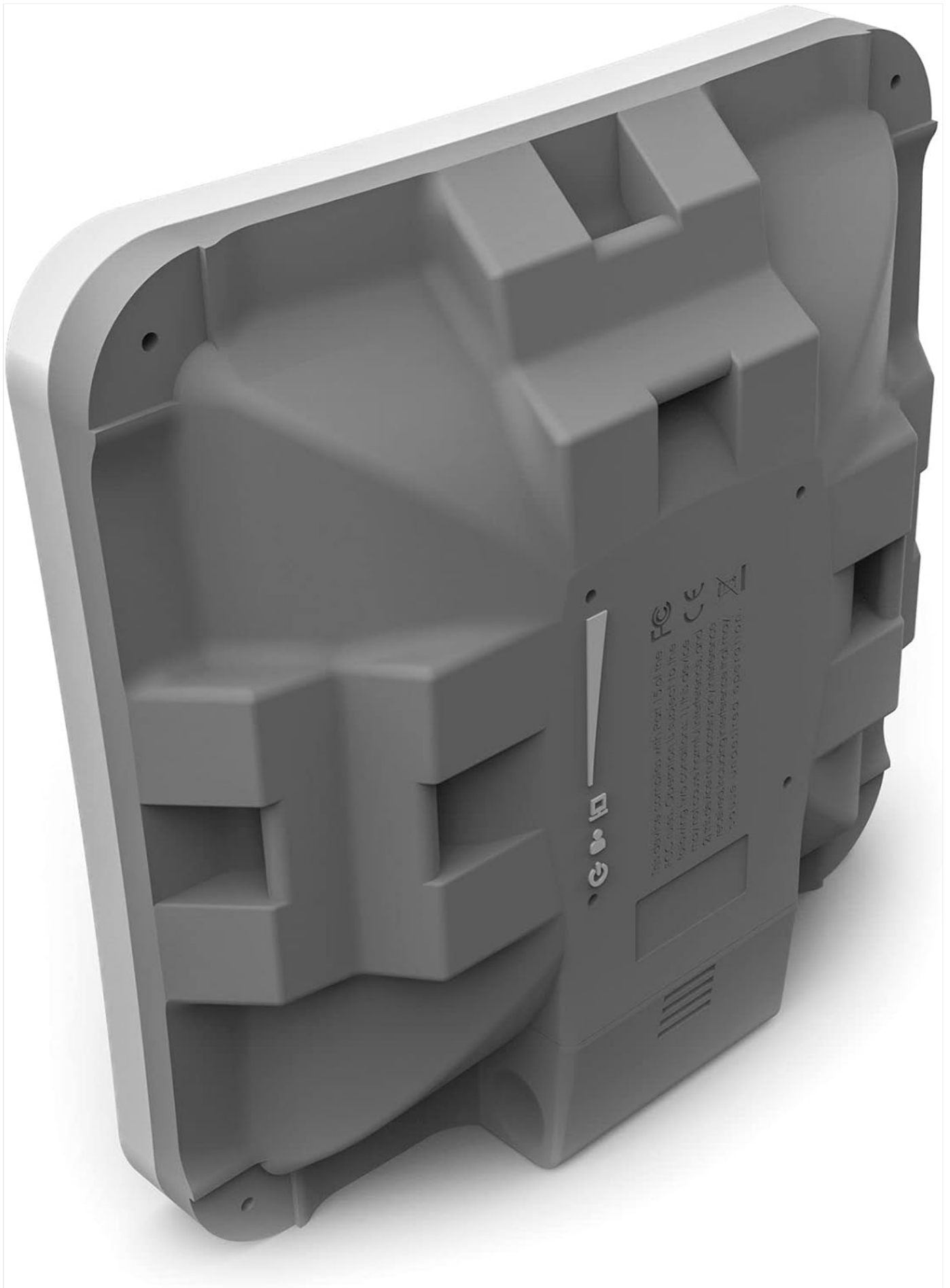


Figure 4: Rear view of the MikroTik SXTsq Lite5, highlighting the Ethernet port location and product information labels.

4. OPERATING THE DEVICE

After physical installation and power connection, the SXTsq Lite5 requires software configuration to function as a wireless link or CPE.

4.1. Initial Configuration

The device typically comes with a default IP address (e.g., 192.168.88.1) and a web-based configuration interface (WebFig) or a desktop utility (WinBox).

1. **Access Configuration Interface:** Open a web browser and navigate to the device's default IP address, or use the WinBox utility to connect.
2. **Login:** Enter the default username (e.g., "admin") and leave the password blank for the first login. You will be prompted to set a new password.
3. **Basic Setup:** Follow the on-screen prompts or refer to MikroTik's online documentation for specific configuration steps for your desired application (e.g., Access Point, Station, Bridge, Router). This typically involves setting wireless modes, SSID, security protocols, and network IP settings.
4. **Firmware Update:** It is recommended to update the device's RouterOS firmware to the latest stable version for optimal performance and security.

4.2. Wireless Link Alignment

For point-to-point links, precise alignment of the SXTsq Lite5 with the remote device is crucial for maximum throughput and stability. Use the signal strength indicators available in the configuration interface to fine-tune the device's physical orientation.

5. MAINTENANCE

Regular maintenance ensures the longevity and reliable operation of your SXTsq Lite5 device.

- **Physical Inspection:** Periodically check the device and its mounting hardware for any signs of wear, corrosion, or damage, especially after severe weather conditions.
- **Cable Integrity:** Ensure all Ethernet cable connections are secure and that the weatherproof cover for the Ethernet port is properly sealed.
- **Cleaning:** Gently clean the exterior of the device with a soft, damp cloth to remove dirt or debris that might accumulate. Do not use harsh chemicals or abrasive materials.
- **Firmware Updates:** Regularly check for and apply firmware updates from the MikroTik website to benefit from performance improvements, new features, and security patches.

6. TROUBLESHOOTING

If you encounter issues with your SXTsq Lite5, consider the following troubleshooting steps:

- **No Power:**
 - Verify the power adapter is securely plugged into both the PoE injector and the electrical outlet.
 - Ensure the Ethernet cable from the device is connected to the "PoE" port of the injector.
 - Check the electrical outlet with another device.
- **No Network Connectivity:**
 - Confirm all Ethernet cables are properly seated.
 - Check the status LEDs on the device and PoE injector.
 - Ensure your computer's network settings (IP address, subnet mask) are compatible with the device's default

settings for initial access.

- Try resetting the device to factory defaults (refer to MikroTik documentation for the specific reset procedure).

- **Poor Wireless Performance:**

- Re-check physical alignment of the device, especially for point-to-point links.
- Ensure there are no new obstructions in the line of sight.
- Verify wireless channel selection and interference levels in the configuration interface.
- Confirm correct wireless mode and security settings.

7. SPECIFICATIONS

Detailed technical specifications for the MikroTik SXTsq Lite5 (RBSXTsq5nD):

Feature	Specification
Product Model	RBSXTsq5nD
CPU	AR9344
RAM	64 MB
Storage Size	16 MB
Wireless Standards	5 GHz 802.11a/n
Wireless Chip Model	AR9344
Antenna Gain	16 dBi (integrated)
Ethernet Ports	1 x 10/100 Mbps
Maximum Range	Up to 12 Kilometers (point-to-point)
Product Dimensions	5.08 x 5.08 x 1.34 inches (12.9 x 12.9 x 3.4 cm)
Item Weight	15.2 ounces (430 grams)
Operating System	RouterOS (Level 3 License)

8. WARRANTY INFORMATION

MikroTik products are typically covered by a limited manufacturer's warranty. The specific terms and duration of the warranty may vary by region and retailer. Please retain your proof of purchase for warranty claims.

For detailed warranty information, please refer to the official MikroTik website or contact your authorized reseller.

9. TECHNICAL SUPPORT

For technical assistance, configuration guides, and advanced troubleshooting, please visit the official MikroTik website:

- **Official Website:** <https://mikrotik.com/>
- **Documentation:** <https://wiki.mikrotik.com/>
- **Support Forum:** <https://forum.mikrotik.com/>

When contacting support, please have your device's model number (RBSXTsq5nD) and serial number readily available.

