

## TecTake 402706-2

# TecTake Balcony Privacy Screen User Manual

Model: 402706-2

## 1. INTRODUCTION

Thank you for choosing the TecTake Balcony Privacy Screen. This product is designed to provide effective privacy, sun protection, and wind protection for your balcony, garden, or terrace. Made from durable, weather-resistant material with reinforced metal eyelets, it offers a practical and attractive solution for outdoor spaces.

Please read this manual carefully before installation and use to ensure proper setup and longevity of your privacy screen.

## 2. SAFETY INSTRUCTIONS

- Always ensure the screen is securely fastened to prevent detachment, especially in windy conditions.
- Do not install the screen in extremely strong winds or storms. Remove the screen if severe weather is anticipated.
- Keep sharp objects away from the screen material to avoid punctures or tears.
- Ensure all mounting points are structurally sound and can support the screen's weight and any wind load.

## 3. PACKAGE CONTENTS

Please verify that all components are present before beginning installation:

- 1 x TecTake Balcony Privacy Screen (Black, 600 x 90 cm)
- Mounting Rope (white, for attachment)



Image 3.1: The TecTake Balcony Privacy Screen, shown rolled up, alongside the included white mounting rope.

## 4. SETUP AND INSTALLATION

The TecTake Balcony Privacy Screen is designed for easy and quick installation. Follow these steps for optimal results:

1. **Unroll the Screen:** Carefully unroll the privacy screen to its full length.
2. **Positioning:** Hold the screen against the railing or fence where you intend to install it. Ensure it is aligned straight and covers the desired area.
3. **Secure with Rope:** Thread the provided mounting rope through the reinforced metal eyelets along the edges of the screen.
4. **Attach to Railing/Fence:** Tie the rope securely around your balcony railing, fence posts, or other stable attachment points. Ensure the rope is pulled taut to prevent sagging. You may also use zip ties (not included) for a more rigid and secure attachment, as preferred by some users.
5. **Even Tension:** Distribute the tension evenly across all eyelets to ensure the screen remains flat and stable.



Image 4.1: A close-up view of a reinforced metal eyelet, demonstrating the quality of the attachment points.

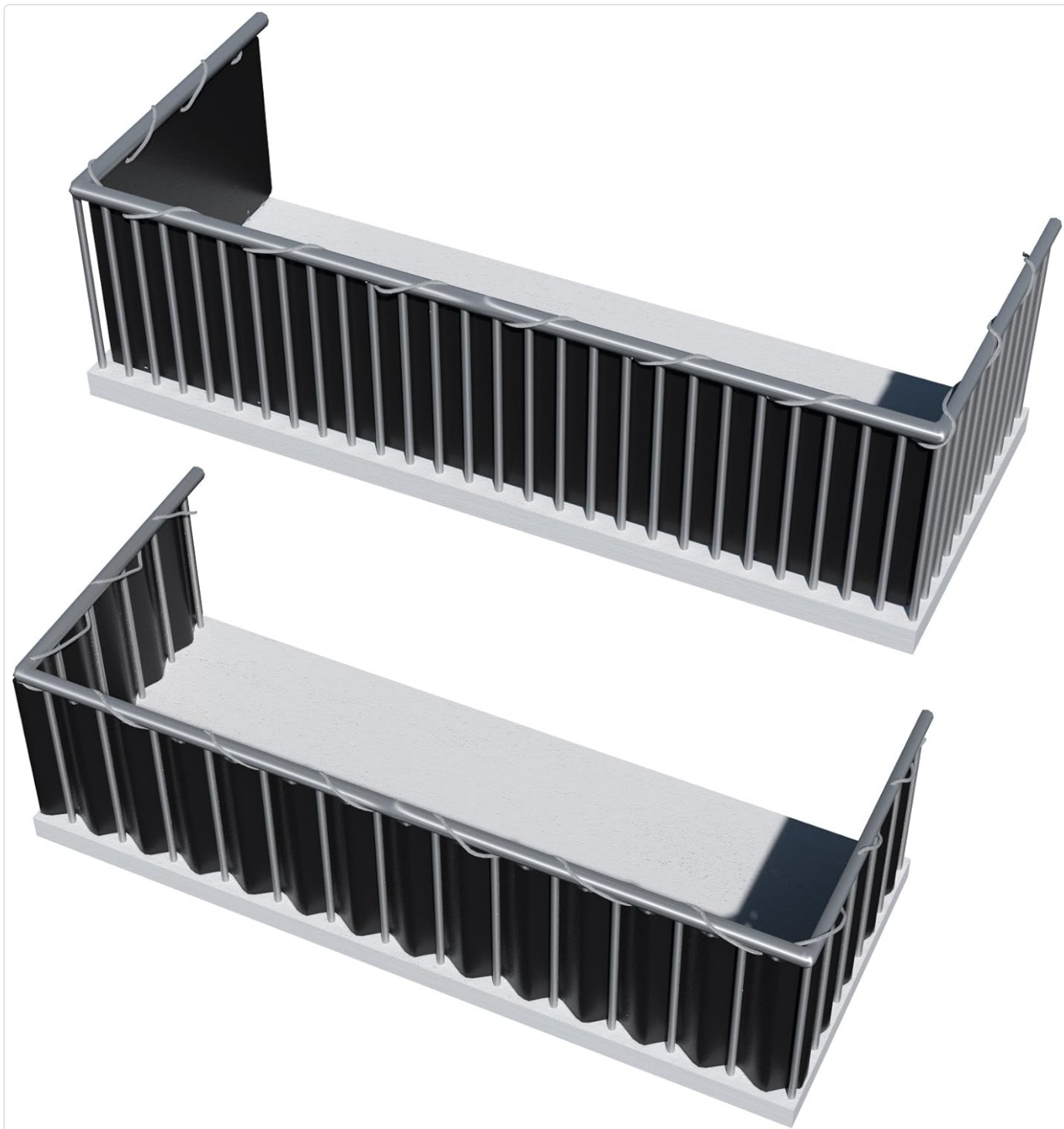


Image 4.2: An illustration depicting the privacy screen installed on typical balcony railings, providing visual guidance for setup.

## 5. OPERATING THE PRIVACY SCREEN

---

Once installed, the TecTake Balcony Privacy Screen functions passively to provide its benefits:

- **Privacy:** The dense material effectively blocks visibility, creating a private space on your balcony or in your garden.
- **Sun Protection:** It offers UV protection, reducing direct sunlight and helping to protect outdoor furniture from sun damage.
- **Wind Protection:** The screen acts as a windbreak, making your outdoor area more comfortable.

## 6. MAINTENANCE

---

To ensure the longevity and appearance of your privacy screen, follow these simple maintenance guidelines:

- **Cleaning:** The screen is made from waterproof fabric. Clean it periodically with a damp cloth and mild soap. Rinse with water and allow it to air dry completely before storage. Do not use harsh chemicals or abrasive cleaners.
- **Inspection:** Regularly inspect the screen and its attachment points for any signs of wear, tear, or damage. Check the ropes or zip ties for fraying or loosening.
- **Storage:** If you plan to remove the screen for extended periods, clean it thoroughly, ensure it is dry, and store it in a cool, dry place away from direct sunlight and extreme temperatures.

## 7. TROUBLESHOOTING

Problem	Possible Cause	Solution
Screen sags or appears wobbly	Insufficient tension during installation; loose attachment points.	Re-tension the mounting rope or zip ties. Ensure all attachment points are secure and taut. Consider using more attachment points or stronger fasteners.
Mounting rope breaks or frays quickly	Wear and tear; exposure to harsh weather; insufficient strength for load.	Replace the rope with a more durable alternative, such as UV-resistant zip ties or stronger outdoor-grade cord.
Insufficient privacy or shade	Screen size is too small for the area; light conditions.	Ensure the screen covers the entire desired area. For increased privacy or shade, consider installing an additional screen or a larger size if available.

## 8. SPECIFICATIONS

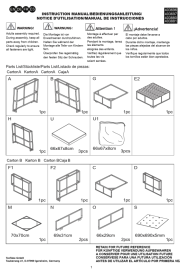
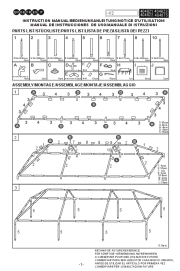
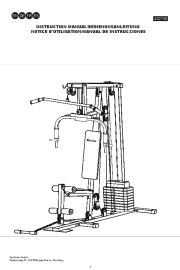

- **Model:** 402706-2
- **Dimensions:** Approximately 600 cm (Length) x 90 cm (Height) x 0.5 cm (Thickness)
- **Color:** Black
- **Material:** Weather-resistant fabric with plastic mesh reinforcement
- **Features:** Reinforced metal eyelets, UV protection
- **Weight:** Approximately 3.1 kg (packaged)

## 9. WARRANTY INFORMATION

Specific warranty details for this product are not provided within this manual. For information regarding warranty coverage, terms, and conditions, please refer to the retailer's website where the product was purchased or contact TecTake customer service directly.

## 10. CUSTOMER SUPPORT

If you have any questions, require assistance with installation, or encounter issues not covered in this manual, please contact the retailer from whom you purchased the product. You may also visit the official TecTake website for further support and contact information.

	<p><a href="#">TecTake Rattan Garden Furniture Assembly Instructions</a></p> <p>Comprehensive assembly instructions for TecTake rattan garden furniture sets, including a detailed parts list and step-by-step visual guidance. Model numbers: 403696, 403697, 403880, 403881.</p>
	<p><a href="#">tectake Gazebo Instruction Manual - Assembly Guide</a></p> <p>Comprehensive instruction manual for assembling and maintaining your tectake gazebo. Includes parts list, step-by-step assembly, location advice, care instructions, and contact information.</p>
	<p><a href="#">TecTake 402756 Home Gym Assembly and Exercise Guide</a></p> <p>Instruction manual for the TecTake 402756 home gym, covering assembly, safety precautions, and exercise guidance. Includes preparation tips and warm-up/cool-down routines.</p>
	<p><a href="#">2-in-1 Grass Shear / Hedge Trimmers WIRELESS BATTERY LI-ION 7.2V - User Manual</a></p> <p>Comprehensive user manual for the 2-in-1 Grass Shear / Hedge Trimmers WIRELESS BATTERY LI-ION 7.2V (Model 401542). Includes technical specifications, intended use, safety warnings, operating instructions, maintenance, and troubleshooting.</p>