

Manuals+

[Q & A](#) | [Deep Search](#) | [Upload](#)

manuals.plus /

› [LOFTER](#) /

› [LOFTER LED Rechargeable Cabinet Light With Motion Sensor - 62-LED Wireless Under Cabinet Lighting for Closets, Wardrobes - 2 Sensor Modes](#)

LOFTER USLED-0186 Version

LOFTER LED Rechargeable Cabinet Light Instruction Manual

Model: USLED-0186 Version | Brand: LOFTER

1. PRODUCT OVERVIEW

The LOFTER LED Rechargeable Cabinet Light is a versatile lighting solution designed for various indoor spaces. Featuring advanced motion and light sensing capabilities, it provides convenient and efficient illumination. Its rechargeable battery eliminates the need for frequent battery replacements, offering an energy-saving and cost-effective lighting option.



Image: The LOFTER LED Rechargeable Cabinet Light, showcasing its sleek, elongated design with integrated LED bulbs and a central sensor.

2. PACKAGE CONTENTS

Please verify that all items listed below are included in your package:

- 1 x LOFTER LED Rechargeable Cabinet Light
- 1 x USB Charging Cable
- 1 x 3M Adhesive Magnetic Strip
- 2 x Screws
- 2 x Wall Anchors
- 1 x User Manual (this document)



Image: All components included in the LOFTER LED Motion Sensor Light package, laid out on a wooden surface.

3. SPECIFICATIONS

Feature	Detail
LED Quantity	62 LEDs
Light Color	Pure White (6000K)
Lumen Output	230 LM
Battery Capacity	1600mAh Lithium Battery
Voltage	5 Volts
Wattage	2.5 Watts
Sensor Angle	120 Degrees
Sensor Range	Up to 3 meters (10 feet)
Product Dimensions	15.9"L x 1.5"W x 0.7"H
Material	Aluminum Alloy, Polycarbonate



Image: A detailed diagram illustrating the technical components and dimensions of the LOFTER LED Cabinet Light.

4. INSTALLATION

The LOFTER LED Cabinet Light offers two convenient installation methods:

Method 1: Magnetic with 3M Adhesive Strip

This method is ideal for quick and flexible placement, allowing easy removal for charging or relocation.

1. Clean the surface where you intend to install the light. Ensure it is dry and free of dust.
2. Peel off the protective backing from the 3M adhesive on the magnetic strip.
3. Firmly press the magnetic strip onto the desired surface. Hold for a few seconds to ensure strong adhesion.
4. Attach the LOFTER LED Cabinet Light to the magnetic strip. The built-in magnets will securely hold the light in place.

Method 2: Screw Mounting

For a more permanent installation, use the provided screws and wall anchors.

1. Identify the desired mounting location. Mark the positions for the two screw holes on the surface.
2. Drill pilot holes at the marked positions. If installing into drywall, insert the wall anchors.
3. Align the magnetic strip with the drilled holes and secure it using the provided screws.
4. Attach the LOFTER LED Cabinet Light to the magnetic strip.

TECHNICAL DETAILS

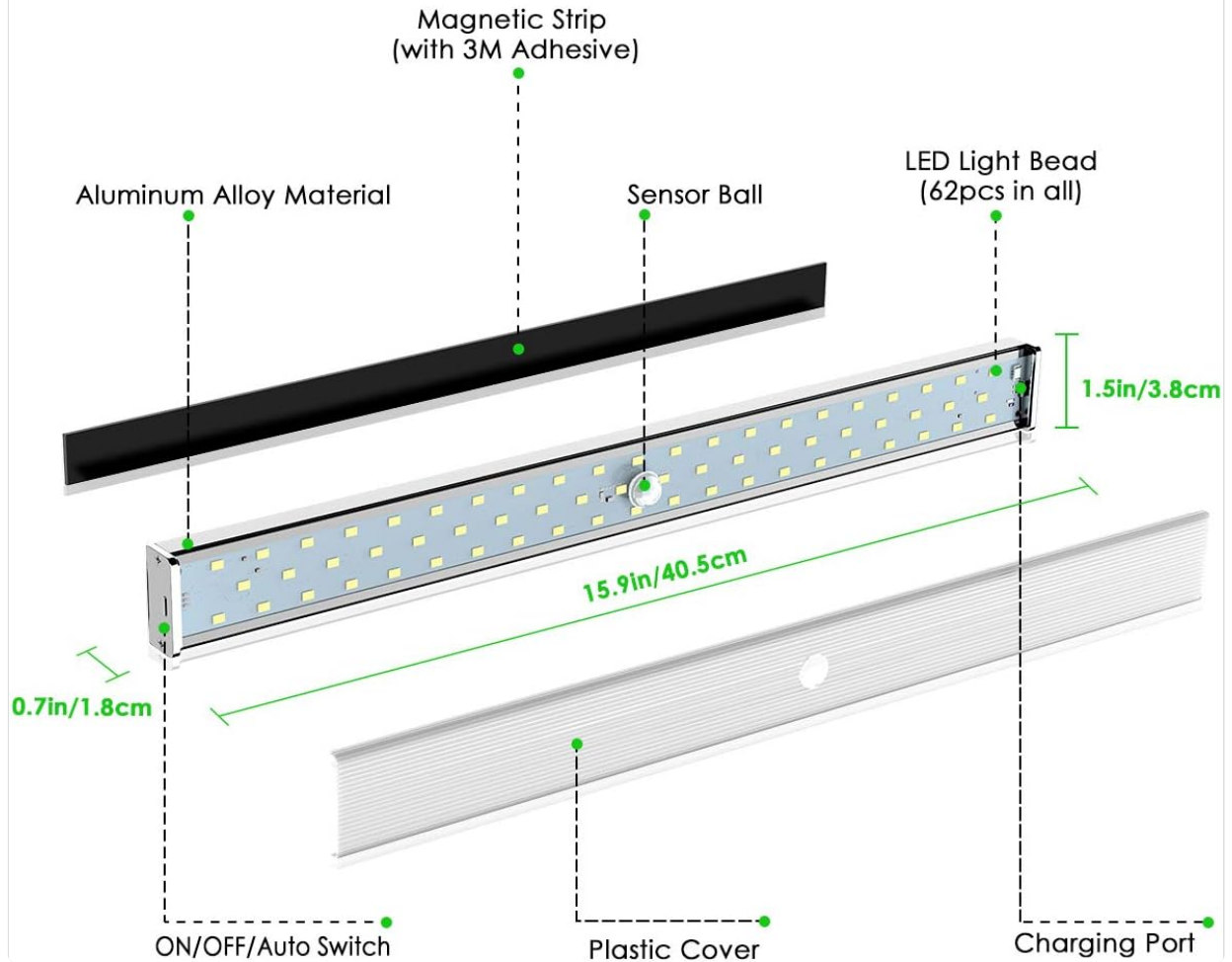


Image: A visual guide demonstrating both the adhesive magnetic strip installation and the screw mounting method for the light.

5. OPERATING INSTRUCTIONS

The LOFTER LED Cabinet Light features a multi-functional switch to cycle through its 4 operating modes. The sensor is located in the middle of the light bar. Ensure the sensor is pointed towards the area where motion is expected for optimal performance.

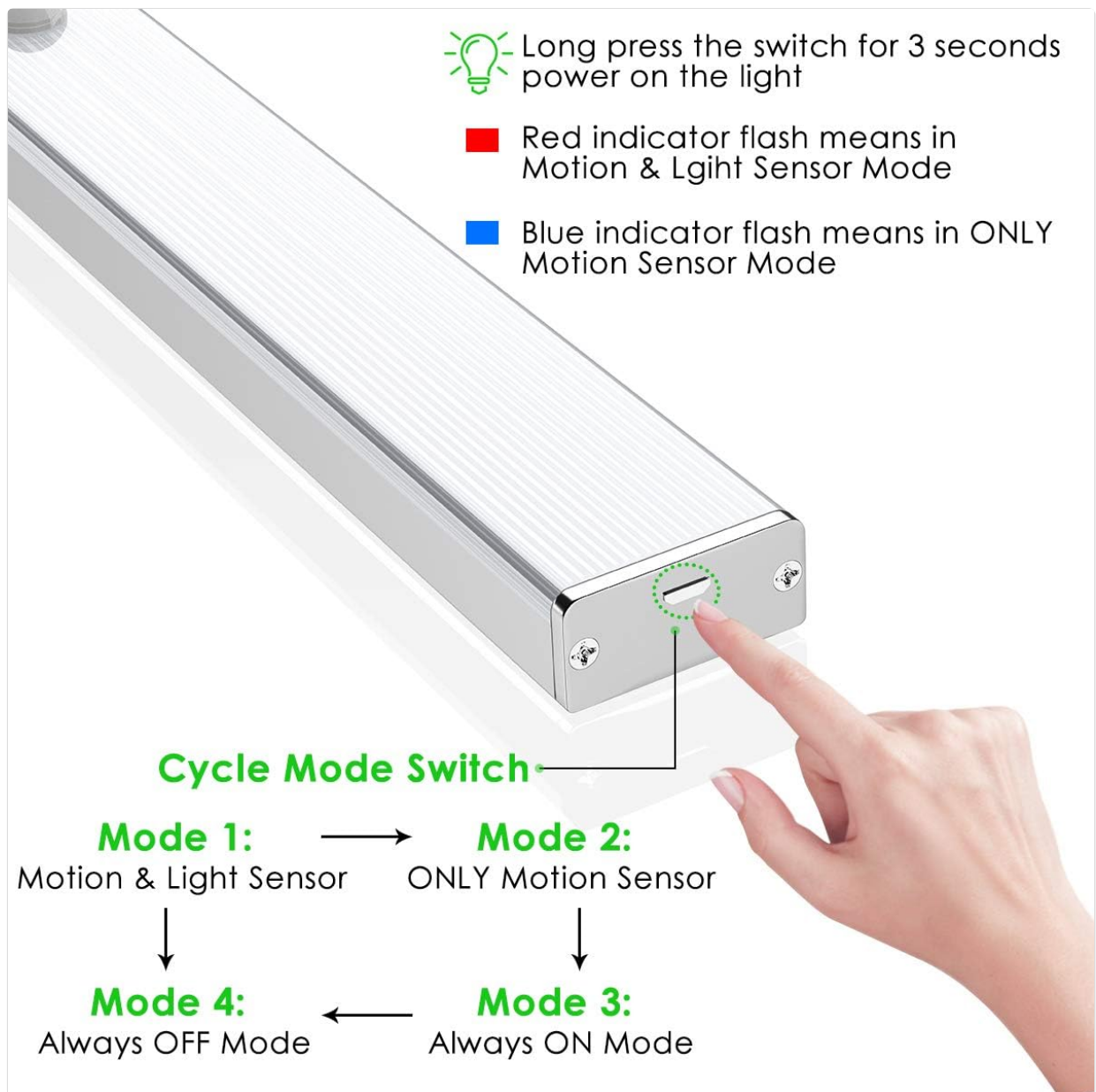


Image: A diagram illustrating the four operating modes and the location of the power switch/mode button on the light.

Mode Selection:

- **Mode 1: Motion & Light Sensor Mode**

Long press the switch for 3 seconds. A red indicator light will illuminate. In this mode, the light will only turn on automatically when motion is detected within 3 meters (10 feet) AND the ambient brightness is less than 10 Lux (i.e., it's dark enough). The light will turn off 20 seconds after motion ceases.

- **Mode 2: ONLY Motion Sensor Mode**

Long press the switch for 1 second. A blue indicator light will illuminate. In this mode, the light will turn on automatically when motion is detected within 3 meters (10 feet), regardless of ambient light conditions. The light will turn off 20 seconds after motion ceases.

- **Mode 3: Always On Mode**

Press the switch for 1 second from Mode 2. The light will remain continuously on until manually switched off or battery depletes.

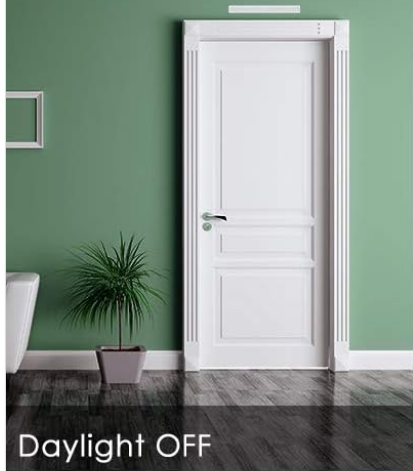
- **Mode 4: Off Mode**

Long press the switch for 3 seconds from any mode to turn the light completely off.

INTEGRATED 2 SENSOR MODES

Combination of ONLY Motion Sensor Mode and Motion & Light Sensor Mode ,
Meet Your Different Usages

1. ONLY Motion Sensor Mode



2. Motion & Light Sensor Mode



Image: A comparative diagram illustrating the functionality of the "ONLY Motion Sensor Mode" and "Motion & Light Sensor Mode" based on daylight conditions and motion detection.

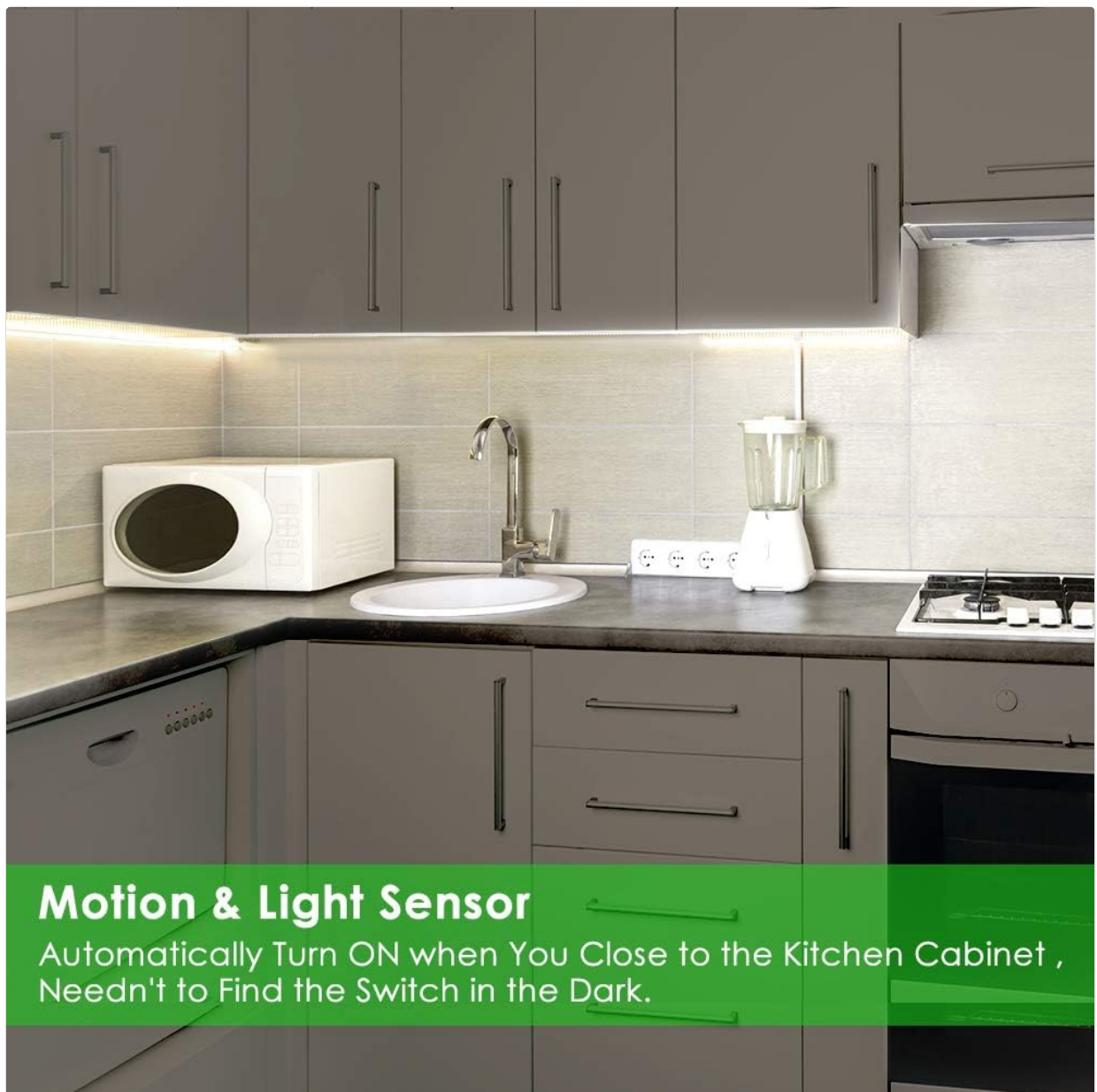
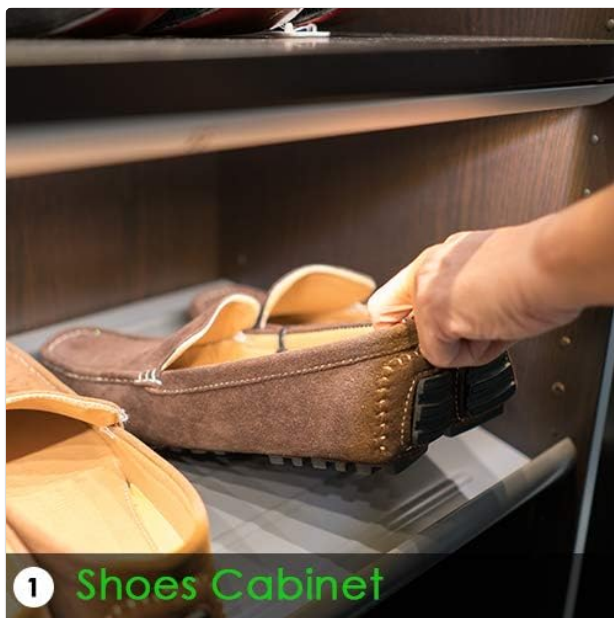


Image: The LOFTER LED Cabinet Light installed under a kitchen cabinet, demonstrating its illumination and motion/light sensor functionality in a real-world setting.

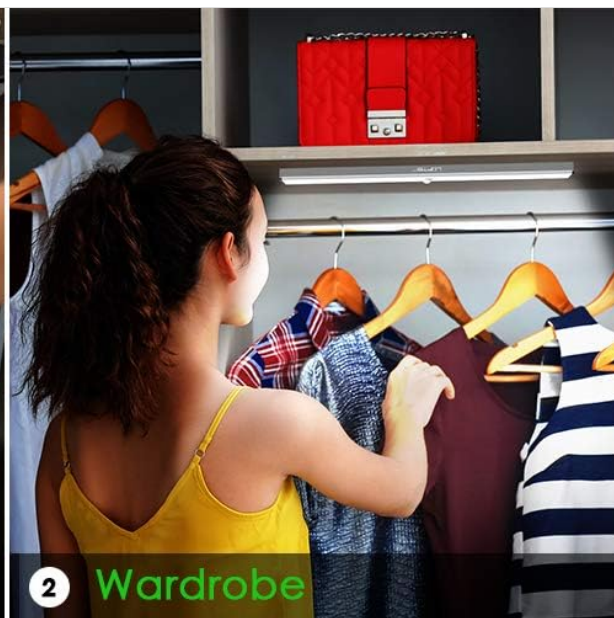
Charging the Battery:

The light has a built-in 1600mAh rechargeable lithium battery. When the battery is low, the indicator light may flash yellow (though not explicitly stated in the provided text, it's a common feature for low battery indicators). To charge:

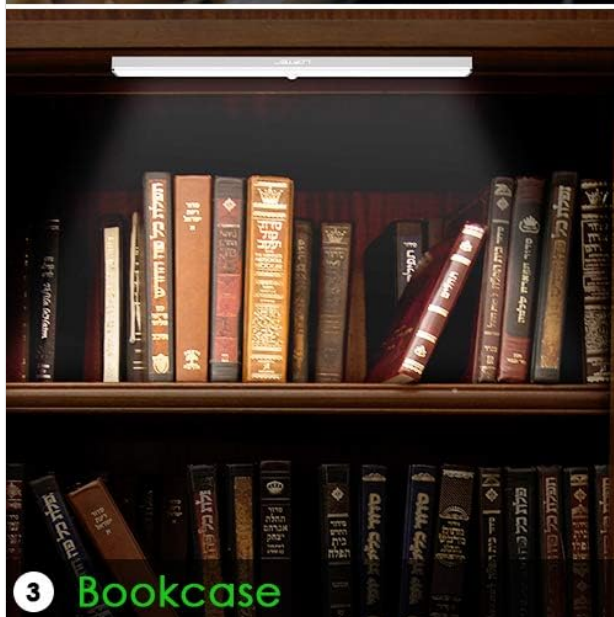
1. Locate the Micro-USB charging port on the side of the light.
2. Connect the provided USB charging cable to the light's port and to a standard USB power source (e.g., computer, USB wall adapter).
3. During charging, a red indicator light will be solid. Once fully charged, the indicator light will turn solid blue.
4. Charging typically takes 4-6 hours. A full charge can last over 3 hours in "Always On" mode.



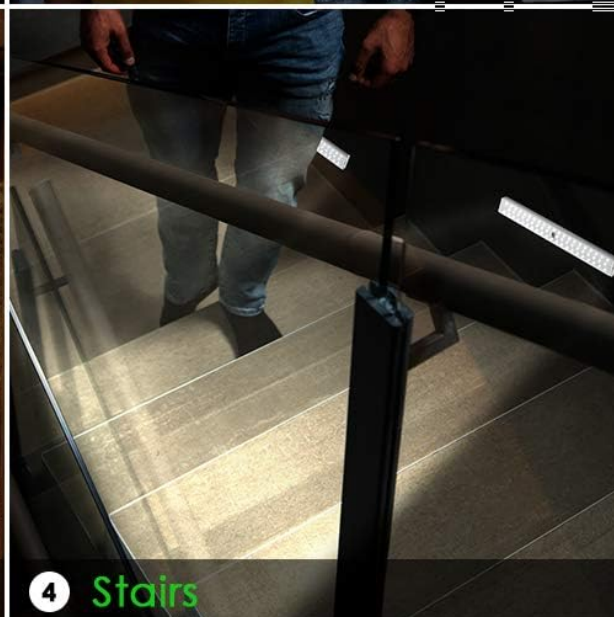
1 Shoes Cabinet



2 Wardrobe



3 Bookcase



4 Stairs

Image: A diagram highlighting the high battery capacity and the location of the Micro-USB charging port on the light, along with charging indicator colors.

6. MAINTENANCE

- **Cleaning:** Use a soft, dry cloth to wipe the surface of the light. Avoid using abrasive cleaners or solvents.
- **Battery Care:** To prolong battery life, avoid completely draining the battery frequently. Recharge the light when the indicator suggests low battery.
- **Storage:** If storing the light for an extended period, charge it fully before storage and recharge every 3-6 months to maintain battery health.
- **Environment:** This light is designed for indoor use. Avoid exposing it to extreme temperatures, high humidity, or direct water contact.

7. TROUBLESHOOTING

Problem	Possible Cause / Solution
---------	---------------------------

Problem	Possible Cause / Solution
Light does not turn on in Motion & Light Sensor Mode (Mode 1).	<ul style="list-style-type: none"> ◦ The ambient light is too bright. This mode only activates in low light conditions. ◦ No motion detected within the 3-meter range. ◦ Battery is low. Recharge the light.
Light does not turn on in ONLY Motion Sensor Mode (Mode 2).	<ul style="list-style-type: none"> ◦ No motion detected within the 3-meter range. ◦ Battery is low. Recharge the light. ◦ Ensure the sensor is not obstructed.
Light turns off too quickly.	<ul style="list-style-type: none"> ◦ Ensure continuous motion within the sensor range. The light turns off 20 seconds after motion ceases. ◦ The sensor might be obstructed or not facing the primary area of movement.
Light does not charge.	<ul style="list-style-type: none"> ◦ Check if the USB cable is properly connected to both the light and the power source. ◦ Try a different USB cable or power adapter. ◦ Ensure the charging port is clean and free of debris.

8. WARRANTY AND SUPPORT

LOFTER provides a 12-month replacement warranty and a 30-day money-back guarantee for this product. For any product-related inquiries, technical support, or warranty claims, please contact LOFTER customer service through the platform where you purchased the product. Please have your order number and product model (USLED-0186 Version) ready for faster assistance.

You may also visit the official LOFTER store for more information: [LOFTER Store](#)

9. INTENDED USE AND APPLICATIONS

This LOFTER LED Cabinet Light is designed for indoor use and is ideal for illuminating dark areas where a permanent light system is not available or desired. Its motion-sensing capabilities make it particularly useful for spaces requiring temporary, automatic lighting.

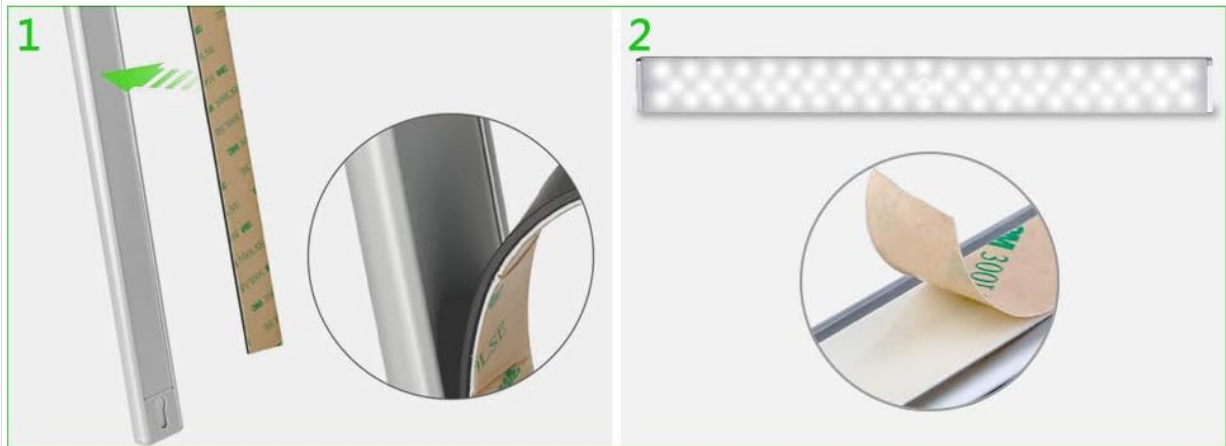
Common applications include:

- Bedrooms
- Closets and Wardrobes
- Kitchen Cabinets and Under Counters
- Pantries and Cupboards
- Workshops and Basements
- Garages
- Stairways
- Bookcases

- Any dark area requiring temporary illumination

TWO WAYS TO INSTALL

Method 1: Stick 3M adhesive magnetic strip to anywhere you want



Method 2: Install 2 screws to flat surface, then put the light into the screws

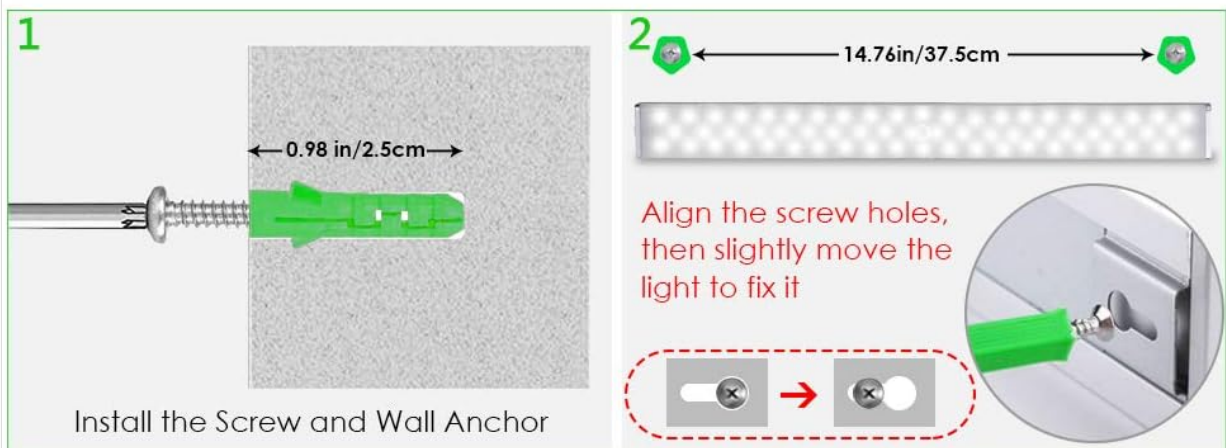


Image: Examples of the LOFTER LED Cabinet Light installed in various locations such as a shoe cabinet, wardrobe, bookcase, and stairs, demonstrating its versatility.