

Titan 106-002/106002

Titan Speeflo 106-002/106002 Packing Set Instruction Manual

Model: 106-002/106002

INTRODUCTION

This instruction manual provides essential information for the proper installation and maintenance of the Titan Speeflo 106-002/106002 Packing Set. This aftermarket packing set is designed to restore optimal performance to compatible airless paint sprayers by replacing worn pump packings. Adhering to these instructions will ensure efficient operation and extend the lifespan of your equipment.

SAFETY INFORMATION

- Always disconnect the airless sprayer from its power source and relieve all pressure before attempting any maintenance or installation.
- Wear appropriate personal protective equipment (PPE), including safety glasses and gloves, during installation.
- Refer to your airless sprayer's original manufacturer manual for specific disassembly and reassembly procedures.
- Keep all components out of reach of children.

PRODUCT OVERVIEW

The Speeflo 106-002/106002 Packing Set includes various seals and rings critical for maintaining the pressure and efficiency of your airless sprayer pump. These components are designed to create a tight seal, preventing leaks and ensuring consistent spray performance.



Figure 1: Individual components of the packing set. This image displays the various rings and seals that make up the Speeflo 106-002/106002 Packing Set, laid out on a gray surface.

SETUP AND INSTALLATION

Replacing the packing set requires careful attention to detail. Always refer to your specific airless sprayer's service manual for detailed pump disassembly and reassembly instructions. The following steps provide a general guide for installing the new packing set:

1. **Preparation:** Ensure the sprayer is disconnected from power and all pressure is relieved. Clean the work area thoroughly.
2. **Disassembly:** Carefully disassemble the pump section of your airless sprayer according to the manufacturer's instructions. Remove all old, worn packing components.
3. **Inspection:** Inspect the pump cylinder and piston rod for any damage, scratches, or wear that could affect the new packing's seal. Replace any damaged parts if necessary.
4. **Lubrication:** Lightly lubricate the new packing components with a compatible lubricant (e.g., pump armor, hydraulic oil) before installation. This aids in seating and reduces initial wear.
5. **Installation:** Install the new packing components in the correct sequence and orientation as specified by your sprayer's manual. Ensure each ring and seal is properly seated and not twisted or pinched.
6. **Reassembly:** Reassemble the pump section, ensuring all fasteners are tightened to the manufacturer's specifications.
7. **Testing:** After reassembly, prime the sprayer with water or a compatible fluid and slowly increase pressure to check for leaks and proper operation.

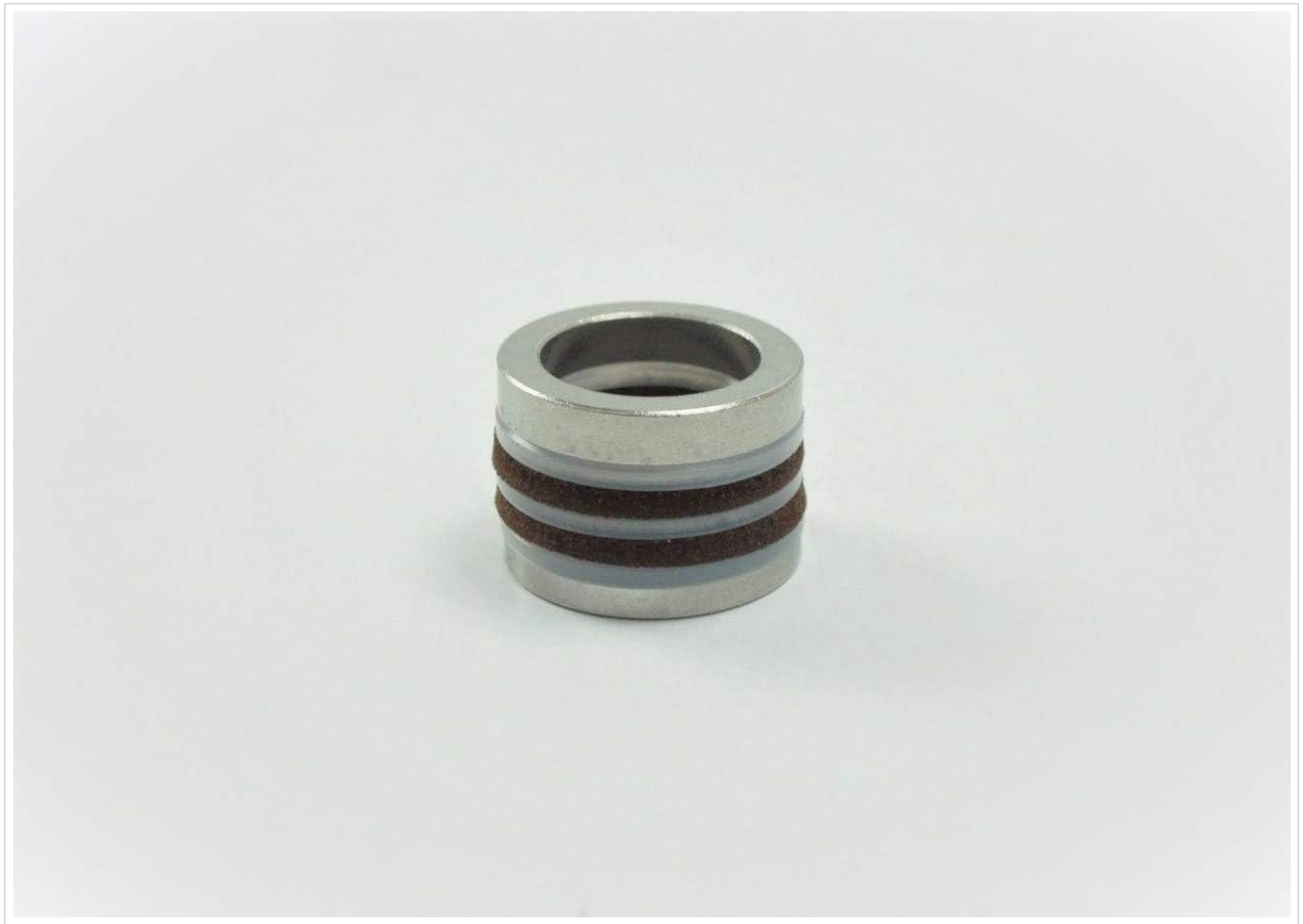


Figure 2: Assembled view of the packing set. This image shows the packing set components stacked in their typical assembly order, ready for installation into the pump.

OPERATING CONSIDERATIONS

Once the new packing set is installed, the airless sprayer should operate with restored pressure and efficiency. Monitor the sprayer during its first few uses to ensure there are no leaks and that pressure is consistent. Proper packing installation is key to maintaining the sprayer's performance and preventing premature wear on other pump components.

MAINTENANCE

To maximize the lifespan of your packing set and airless sprayer:

- **Regular Cleaning:** Always flush your airless sprayer thoroughly after each use with appropriate cleaning solutions (e.g., water for latex paints, mineral spirits for oil-based paints).
- **Pump Armor:** Use pump protector fluid (pump armor) when storing the sprayer for extended periods. This lubricates the packings and prevents corrosion.
- **Inspect for Wear:** Periodically inspect the pump section for signs of wear or leaks. Early detection of worn packings can prevent more significant damage to the pump.
- **Proper Storage:** Store the sprayer in a clean, dry environment, protected from extreme temperatures.

TROUBLESHOOTING

Problem	Possible Cause	Solution
---------	----------------	----------

Problem	Possible Cause	Solution
Loss of Pressure / Pulsating Spray	Worn or improperly installed packing set.	Inspect and replace packing set if worn. Ensure correct installation.
Leaks from Pump Section	Damaged or improperly seated packing components.	Disassemble, inspect, and re-install packing set. Replace any damaged components.
Excessive Wear on New Packings	Lack of lubrication during installation, abrasive materials, or damaged pump cylinder/piston.	Ensure proper lubrication. Check for damage to pump components. Use appropriate materials for sprayer.

SPECIFICATIONS

- Model:** 106-002/106002
- Brand:** Titan (Aftermarket)
- Power Source:** Manual (for the sprayer it's installed in)
- Item Package Quantity:** 1 set
- Manufacturer:** Spraytech Titan (Original equipment manufacturer for compatible parts)

WARRANTY AND SUPPORT

For specific warranty information regarding this aftermarket packing set, please refer to the retailer or manufacturer from whom it was purchased. For technical support or further assistance with your airless sprayer, consult your sprayer's original manufacturer manual or contact their customer service department.

